

logo

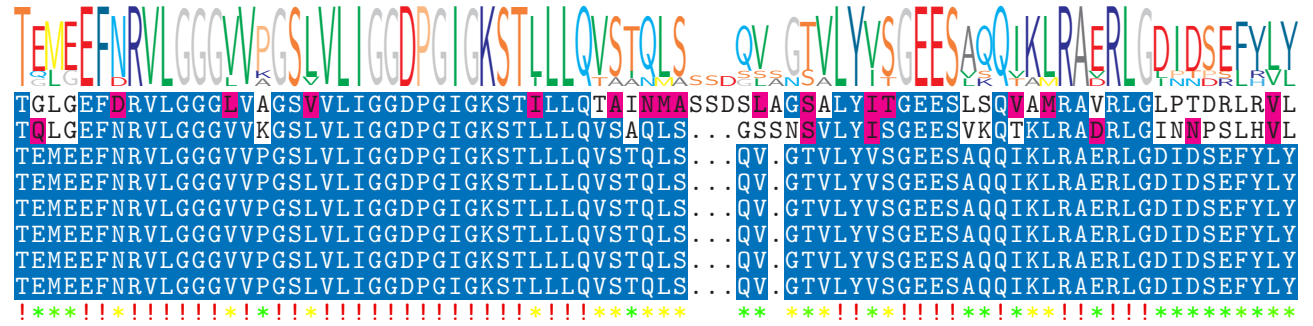
NTDB id 997925 AAHK14 RS09940 WP 065254995.1
 NTDB id 125 BSU 00870 NP 387968.1
 NTDB id 509 SM12261 RS00130 WP 078228442.1
 NTDB id 279 KZH43 RS00140 WP 074017595.1
 NTDB id 238 SPD RS00140 WP 074017595.1
 NTDB id 204 SPR RS00140 WP 074017595.1
 NTDB id 169 SP RS00155 WP 074017595.1
 NTDB id 537 SMSK321 RS07120 WP 080550752.1
 consensus



79
74
71
71
71
71
71
71

logo

NTDB id 997925 AAHK14 RS09940 WP 065254995.1
 NTDB id 125 BSU 00870 NP 387968.1
 NTDB id 509 SM12261 RS00130 WP 078228442.1
 NTDB id 279 KZH43 RS00140 WP 074017595.1
 NTDB id 238 SPD RS00140 WP 074017595.1
 NTDB id 204 SPR RS00140 WP 074017595.1
 NTDB id 169 SP RS00155 WP 074017595.1
 NTDB id 537 SMSK321 RS07120 WP 080550752.1
 consensus



159
151
147
147
147
147
147
147

logo

NTDB id 997925 AAHK14 RS09940 WP 065254995.1
 NTDB id 125 BSU 00870 NP 387968.1
 NTDB id 509 SM12261 RS00130 WP 078228442.1
 NTDB id 279 KZH43 RS00140 WP 074017595.1
 NTDB id 238 SPD RS00140 WP 074017595.1
 NTDB id 204 SPR RS00140 WP 074017595.1
 NTDB id 169 SP RS00155 WP 074017595.1
 NTDB id 537 SMSK321 RS07120 WP 080550752.1
 consensus



239
231
227
227
227
227
227
227

logo

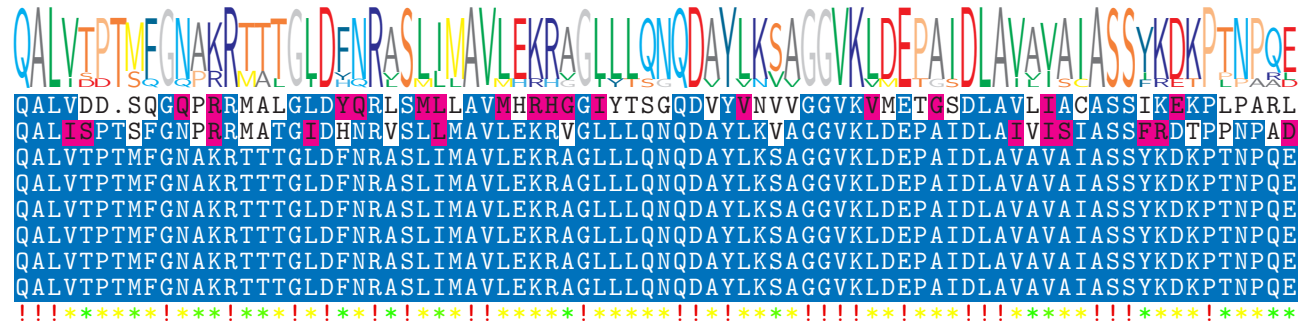
NTDB id 997925 AAHK14 RS09940 WP 065254995.1
 NTDB id 125 BSU 00870 NP 387968.1
 NTDB id 509 SM12261 RS00130 WP 078228442.1
 NTDB id 279 KZH43 RS00140 WP 074017595.1
 NTDB id 238 SPD RS00140 WP 074017595.1
 NTDB id 204 SPR RS00140 WP 074017595.1
 NTDB id 169 SP RS00155 WP 074017595.1
 NTDB id 537 SMSK321 RS07120 WP 080550752.1
 consensus



319
311
307
307
307
307
307
307

logo

NTDB id 997925 AAHK14 RS09940 WP 065254995.1
 NTDB id 125 BSU 00870 NP 387968.1
 NTDB id 509 SM12261 RS00130 WP 078228442.1
 NTDB id 279 KZH43 RS00140 WP 074017595.1
 NTDB id 238 SPD RS00140 WP 074017595.1
 NTDB id 204 SPR RS00140 WP 074017595.1
 NTDB id 169 SP RS00155 WP 074017595.1
 NTDB id 537 SMSK321 RS07120 WP 080550752.1
 consensus



398
391
387
387
387
387
387
387

logo

NTDB id 997925 AAHK14 RS09940 WP 065254995.1
 NTDB id 125 BSU 00870 NP 387968.1
 NTDB id 509 SM12261 RS00130 WP 078228442.1
 NTDB id 279 KZH43 RS00140 WP 074017595.1
 NTDB id 238 SPD RS00140 WP 074017595.1
 NTDB id 204 SPR RS00140 WP 074017595.1
 NTDB id 169 SP RS00155 WP 074017595.1
 NTDB id 537 SMSK321 RS07120 WP 080550752.1
 consensus



468
458
453
453
453
453
453
453

- X non conserved
- X similar
- X ≥ 50% conserved