

logo

NTDB id 988459 AAG563 RS02045 WP 009042836.1
NTDB id 1199 PSJM300 12650 AFN78592.1
consensus



80
80

logo

NTDB id 988459 AAG563 RS02045 WP 009042836.1
NTDB id 1199 PSJM300 12650 AFN78592.1
consensus



160
160

logo

NTDB id 988459 AAG563 RS02045 WP 009042836.1
NTDB id 1199 PSJM300 12650 AFN78592.1
consensus



238
240

logo

NTDB id 988459 AAG563 RS02045 WP 009042836.1
NTDB id 1199 PSJM300 12650 AFN78592.1
consensus



318
320

logo

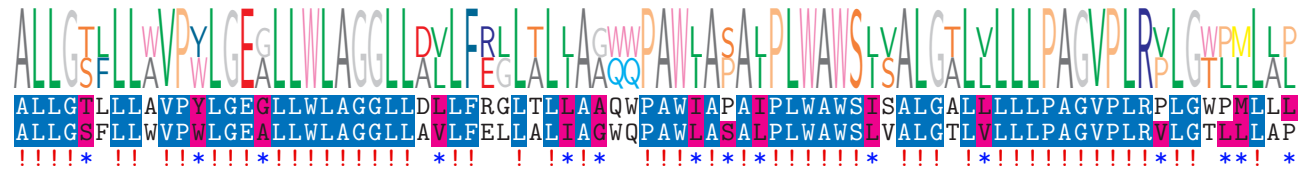
NTDB id 988459 AAG563 RS02045 WP 009042836.1
NTDB id 1199 PSJM300 12650 AFN78592.1
consensus



398
400

logo

NTDB id 988459 AAG563 RS02045 WP 009042836.1
NTDB id 1199 PSJM300 12650 AFN78592.1
consensus



478
480

logo

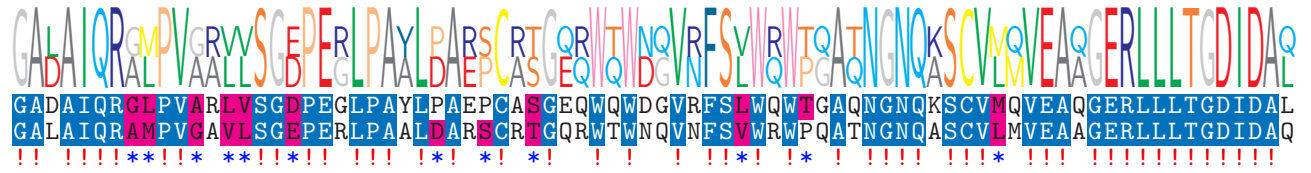
NTDB id 988459 AAG563 RS02045 WP 009042836.1
NTDB id 1199 PSJM300 12650 AFN78592.1
consensus



558
560

logo

NTDB id 988459 AAG563 RS02045 WP 009042836.1
NTDB id 1199 PSJM300 12650 AFN78592.1
consensus



638
640

logo

NTDB id 988459 AAG563 RS02045 WP 009042836.1
NTDB id 1199 PSJM300 12650 AFN78592.1
consensus



718
720

logo

NTDB id 988459 AAG563 RS02045 WP 009042836.1
NTDB id 1199 PSJM300 12650 AFN78592.1
consensus



743
741

- X non conserved
- X similar
- X ≥ 50% conserved