

logo

NTDB id 98119 R8586 RS08555 WP 000614540.1  
 NTDB id 146 SP RS08570 WP 000614538.1  
 NTDB id 216 SPD RS08205 WP 000614552.1  
 NTDB id 182 SPR RS07820 WP 000614552.1  
 NTDB id 257 KZH43 RS07655 WP 220041236.1  
 NTDB id 384 SMU RS02325 WP 002263039.1  
 NTDB id 467 HSISS4 RS06915 WP 021143821.1  
 consensus



85  
85  
85  
85  
85  
85  
85

logo

NTDB id 98119 R8586 RS08555 WP 000614540.1  
 NTDB id 146 SP RS08570 WP 000614538.1  
 NTDB id 216 SPD RS08205 WP 000614552.1  
 NTDB id 182 SPR RS07820 WP 000614552.1  
 NTDB id 257 KZH43 RS07655 WP 220041236.1  
 NTDB id 384 SMU RS02325 WP 002263039.1  
 NTDB id 467 HSISS4 RS06915 WP 021143821.1  
 consensus



170  
170  
170  
170  
170  
170  
170

logo

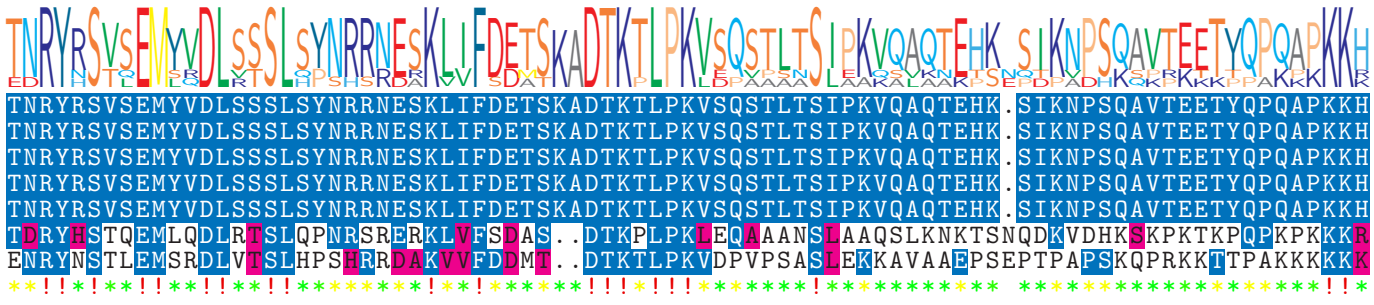
NTDB id 98119 R8586 RS08555 WP 000614540.1  
 NTDB id 146 SP RS08570 WP 000614538.1  
 NTDB id 216 SPD RS08205 WP 000614552.1  
 NTDB id 182 SPR RS07820 WP 000614552.1  
 NTDB id 257 KZH43 RS07655 WP 220041236.1  
 NTDB id 384 SMU RS02325 WP 002263039.1  
 NTDB id 467 HSISS4 RS06915 WP 021143821.1  
 consensus



255  
255  
255  
255  
255  
255  
255

logo

NTDB id 98119 R8586 RS08555 WP 000614540.1  
 NTDB id 146 SP RS08570 WP 000614538.1  
 NTDB id 216 SPD RS08205 WP 000614552.1  
 NTDB id 182 SPR RS07820 WP 000614552.1  
 NTDB id 257 KZH43 RS07655 WP 220041236.1  
 NTDB id 384 SMU RS02325 WP 002263039.1  
 NTDB id 467 HSISS4 RS06915 WP 021143821.1  
 consensus



339  
339  
339  
339  
339  
338  
338

logo

NTDB id 98119 R8586 RS08555 WP 000614540.1  
 NTDB id 146 SP RS08570 WP 000614538.1  
 NTDB id 216 SPD RS08205 WP 000614552.1  
 NTDB id 182 SPR RS07820 WP 000614552.1  
 NTDB id 257 KZH43 RS07655 WP 220041236.1  
 NTDB id 384 SMU RS02325 WP 002263039.1  
 NTDB id 467 HSISS4 RS06915 WP 021143821.1  
 consensus



423  
423  
423  
423  
423  
423  
423

logo

NTDB id 98119 R8586 RS08555 WP 000614540.1  
 NTDB id 146 SP RS08570 WP 000614538.1  
 NTDB id 216 SPD RS08205 WP 000614552.1  
 NTDB id 182 SPR RS07820 WP 000614552.1  
 NTDB id 257 KZH43 RS07655 WP 220041236.1  
 NTDB id 384 SMU RS02325 WP 002263039.1  
 NTDB id 467 HSISS4 RS06915 WP 021143821.1  
 consensus



506  
506  
506  
506  
506  
503  
507

logo

NTDB id 98119 R8586 RS08555 WP 000614540.1  
 NTDB id 146 SP RS08570 WP 000614538.1  
 NTDB id 216 SPD RS08205 WP 000614552.1  
 NTDB id 182 SPR RS07820 WP 000614552.1  
 NTDB id 257 KZH43 RS07655 WP 220041236.1  
 NTDB id 384 SMU RS02325 WP 002263039.1  
 NTDB id 467 HSISS4 RS06915 WP 021143821.1  
 consensus



583  
583  
583  
583  
583  
585  
587

logo

NTDB id 98119 R8586 RS08555 WP 000614540.1  
 NTDB id 146 SP RS08570 WP 000614538.1  
 NTDB id 216 SPD RS08205 WP 000614552.1  
 NTDB id 182 SPR RS07820 WP 000614552.1  
 NTDB id 257 KZH43 RS07655 WP 220041236.1  
 NTDB id 384 SMU RS02325 WP 002263039.1  
 NTDB id 467 HSISS4 RS06915 WP 021143821.1  
 consensus



659  
659  
659  
659  
659  
616  
624

non conserved  
 similar  
 ≥ 50% conserved