

Logo

NTDB id 95205 QML87 RS06580 WP 000748880.1  
NTDB id 475 HSISS4 RS07005 WP 021143809.1  
NTDB id 324 STU RS16140 WP 011226306.1  
NTDB id 292 STER RS06940 WP 011681419.1  
consensus



84  
83  
83  
83

Logo

NTDB id 95205 QML87 RS06580 WP 000748880.1  
NTDB id 475 HSISS4 RS07005 WP 021143809.1  
NTDB id 324 STU RS16140 WP 011226306.1  
NTDB id 292 STER RS06940 WP 011681419.1  
consensus



169  
168  
168  
168

Logo

NTDB id 95205 QML87 RS06580 WP 000748880.1  
NTDB id 475 HSISS4 RS07005 WP 021143809.1  
NTDB id 324 STU RS16140 WP 011226306.1  
NTDB id 292 STER RS06940 WP 011681419.1  
consensus



253  
253  
253  
253

Logo

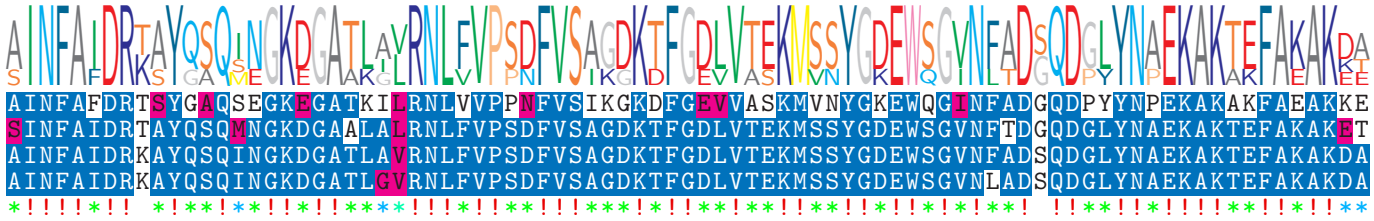
NTDB id 95205 QML87 RS06580 WP 000748880.1  
NTDB id 475 HSISS4 RS07005 WP 021143809.1  
NTDB id 324 STU RS16140 WP 011226306.1  
NTDB id 292 STER RS06940 WP 011681419.1  
consensus



338  
338  
338  
338

Logo

NTDB id 95205 QML87 RS06580 WP 000748880.1  
NTDB id 475 HSISS4 RS07005 WP 021143809.1  
NTDB id 324 STU RS16140 WP 011226306.1  
NTDB id 292 STER RS06940 WP 011681419.1  
consensus



423  
423  
423  
423

Logo

NTDB id 95205 QML87 RS06580 WP 000748880.1  
NTDB id 475 HSISS4 RS07005 WP 021143809.1  
NTDB id 324 STU RS16140 WP 011226306.1  
NTDB id 292 STER RS06940 WP 011681419.1  
consensus



507  
508  
508  
508

logo

NTDB id 95205 QML87 RS06580 WP 000748880.1  
NTDB id 475 HSISS4 RS07005 WP 021143809.1  
NTDB id 324 STU RS16140 WP 011226306.1  
NTDB id 292 STER RS06940 WP 011681419.1  
consensus



590  
593  
593  
593

logo

NTDB id 95205 QML87 RS06580 WP 000748880.1  
NTDB id 475 HSISS4 RS07005 WP 021143809.1  
NTDB id 324 STU RS16140 WP 011226306.1  
NTDB id 292 STER RS06940 WP 011681419.1  
consensus



652  
656  
657  
657

non conserved  
 similar  
 ≥ 50% conserved