

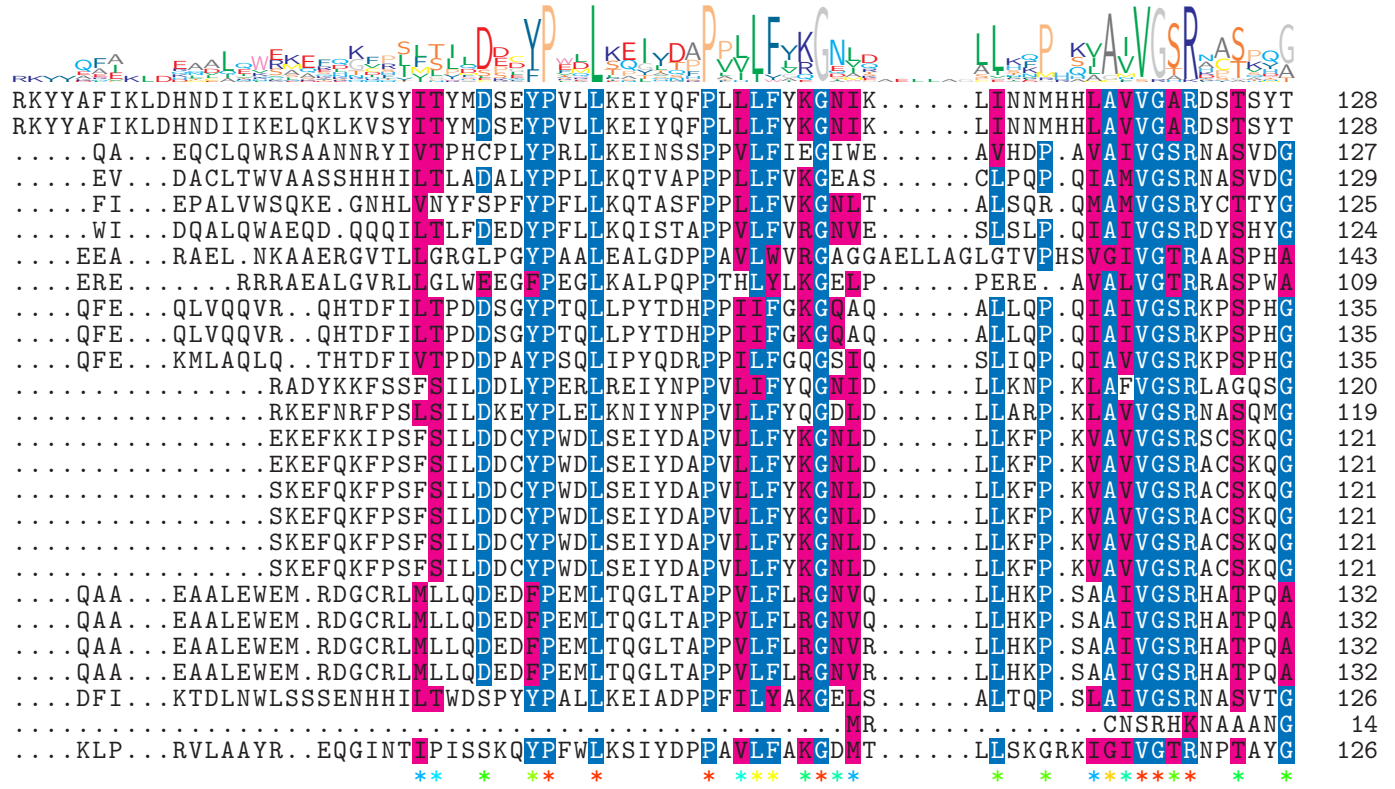
logo



NTDB id 25 SA RS06185 WP 000593194.1	....M <b>I</b> KL <b>F</b> .....LLKLYWAHFSTK <b>Q</b> I <b>H</b> Q <b>F</b> L <b>M</b> AYPN.....VIKEEGRKKDS <b>Y</b> L <b>C</b> E <b>W</b> V <b>N</b> R <b>E</b> ENV <b>L</b> L <b>L</b>	54
NTDB id 40 MW RS06080 WP 000593192.1	....M <b>I</b> KL <b>F</b> .....LLKLYWAHFSTK <b>Q</b> I <b>H</b> Q <b>F</b> L <b>M</b> AYPN.....VIKEEGRKKDS <b>Y</b> L <b>C</b> E <b>W</b> V <b>N</b> R <b>E</b> ENV <b>H</b> L <b>L</b>	54
NTDB id 1152 A1552VC RS00200 WP 000654772.1	...MKD <b>Q</b> DL.....A <b>A</b> WL <b>L</b> .C <b>F</b> TP <b>K</b> L <b>G</b> SK <b>T</b> I <b>S</b> H <b>L</b> L <b>A</b> TR <b>L</b> P.. <b>A</b> Q <b>I</b> Q <b>S</b> F <b>T</b> P <b>K</b> Q <b>W</b> L <b>A</b> C <b>G</b> L <b>K</b> P <b>E</b> Q <b>L</b> V <b>F</b> L <b>I</b> T <b>T</b> Q <b>A</b> A <b>K</b> ....	62
NTDB id 1399 DSB67 RS15600 WP 010645755.1	M <b>T</b> P <b>Q</b> N <b>D</b> I <b>D</b> L.....A <b>A</b> WL <b>L</b> .S <b>C</b> L <b>P</b> G <b>I</b> G <b>G</b> V <b>K</b> M <b>N</b> K <b>L</b> L <b>S</b> K <b>D</b> T <b>P</b> ..S <b>N</b> I <b>V</b> Q <b>Y</b> S <b>T</b> E <b>Q</b> L <b>Q</b> L <b>L</b> G <b>L</b> T <b>A</b> K <b>Q</b> L <b>Q</b> A <b>W</b> .S <b>Q</b> V <b>D</b> K....	64
NTDB id 1361 HI 0985 AAC22646.1	....M <b>N</b> D <b>I</b> T.....Y <b>T</b> L <b>L</b> R <b>L</b> .M <b>Q</b> V <b>P</b> K <b>L</b> G <b>G</b> V <b>G</b> I <b>D</b> K <b>I</b> L <b>S</b> N <b>I</b> T <b>L</b> ..N <b>E</b> L <b>L</b> N <b>Y</b> D <b>D</b> V <b>A</b> F <b>R</b> Q <b>M</b> G <b>W</b> G <b>A</b> I <b>Q</b> I <b>R</b> R <b>W</b> F <b>K</b> P <b>E</b> A <b>K</b> ....	61
NTDB id 1388 A4U84 RS04945 WP 062924099.1	....M <b>T</b> H <b>L</b> .....T <b>K</b> L <b>L</b> L <b>A</b> L.L <b>Q</b> V <b>P</b> Q <b>L</b> G <b>A</b> Q <b>R</b> I <b>G</b> R <b>L</b> L <b>S</b> E <b>V</b> D <b>F</b> ..G <b>E</b> F <b>C</b> Q <b>Y</b> D <b>K</b> T <b>A</b> L <b>K</b> Q <b>M</b> G <b>W</b> N <b>E</b> R <b>Q</b> I <b>Q</b> R <b>W</b> F <b>N</b> P <b>E</b> H <b>K</b> ....	60
NTDB id 1314 DR RS00625 WP 010886768.1	....M <b>T</b> L <b>P</b> S <b>P</b> A <b>A</b> A <b>H</b> A <b>E</b> L <b>L</b> L <b>L</b> T <b>R</b> F <b>T</b> P <b>G</b> L <b>P</b> R <b>R</b> I <b>E</b> N <b>L</b> R <b>R</b> H <b>F</b> G <b>S</b> A <b>E</b> A <b>A</b> L <b>A</b> A <b>P</b> L <b>T</b> E <b>L</b> R <b>R</b> V <b>E</b> G <b>L</b> D <b>S</b> R <b>S</b> V <b>A</b> A <b>I</b> G <b>G</b> A <b>K</b> ....A <b>A</b>	71
NTDB id 1037 TT RS09535 WP 011174226.1	....M <b>D</b> P <b>L</b> A.....L <b>A</b> L....L <b>P</b> G <b>I</b> G <b>P</b> K <b>R</b> L <b>L</b> E <b>V</b> L <b>K</b> A <b>E</b> D.....P <b>L</b> G <b>F</b> ..L <b>R</b> E <b>R</b> F <b>P</b> E <b>A</b> <b>W</b> R <b>H</b> L <b>P</b> E <b>A</b> E <b>A</b> Q <b>A</b>	48
NTDB id 1043 HON27 RS16615 WP 168727007.1	....M <b>I</b> T <b>Q</b> L <b>S</b> S <b>H</b> Q <b>Y</b> H <b>T</b> L <b>K</b> V <b>W</b> Y <b>L</b> V <b>Q</b> ....H <b>S</b> L <b>V</b> S <b>F</b> K <b>K</b> I <b>I</b> D <b>Y</b> F <b>G</b> N <b>C</b> E <b>K</b> A <b>T</b> Q <b>P</b> D <b>G</b> L <b>A</b> K <b>W</b> S <b>S</b> L <b>G</b> L <b>H</b> A <b>N</b> H <b>L</b> K <b>R</b> V <b>N</b> E <b>F</b> Q <b>T</b> P <b>Q</b> G <b>Q</b> A	71
NTDB id 1073 ABD1 RS00865 WP 015451369.1	....M <b>I</b> T <b>Q</b> L <b>S</b> S <b>H</b> H <b>Y</b> H <b>T</b> L <b>K</b> V <b>W</b> Y <b>L</b> V <b>Q</b> ....H <b>S</b> L <b>V</b> S <b>F</b> K <b>K</b> I <b>I</b> D <b>Y</b> F <b>G</b> N <b>C</b> E <b>K</b> A <b>T</b> Q <b>P</b> D <b>G</b> L <b>A</b> K <b>W</b> S <b>S</b> L <b>G</b> L <b>H</b> A <b>N</b> H <b>L</b> K <b>R</b> V <b>N</b> E <b>F</b> Q <b>T</b> T <b>Q</b> G <b>Q</b> A	71
NTDB id 1021 ACIAD RS00975 WP 004930462.1	....M <b>I</b> T <b>I</b> L <b>S</b> S <b>H</b> H <b>Y</b> H <b>T</b> I <b>K</b> V <b>W</b> Y <b>V</b> L <b>Q</b> ....H <b>S</b> L <b>S</b> G <b>F</b> K <b>K</b> L <b>I</b> H <b>Y</b> F <b>G</b> D <b>C</b> E <b>T</b> A <b>L</b> Q <b>P</b> Q <b>R</b> L <b>S</b> D <b>W</b> Q <b>K</b> L <b>G</b> L <b>H</b> A <b>N</b> H <b>L</b> K <b>R</b> L <b>E</b> E <b>V</b> H <b>T</b> L <b>Q</b> G <b>Q</b>	71
NTDB id 599 KW2 RS05940 WP 021037268.1	....M <b>I</b> T <b>N</b> F <b>D</b> .....L <b>F</b> R <b>W</b> K <b>K</b> A <b>G</b> M.....T <b>N</b> L <b>G</b> V <b>N</b> K <b>L</b> L <b>K</b> F <b>F</b> R <b>K</b> Y <b>D</b> R <b>K</b> I <b>S</b> L <b>R</b> Q <b>M</b> G <b>Q</b> V <b>A</b> Q <b>V</b> K <b>S</b> I <b>P</b> N <b>F</b> I <b>E</b> Q <b>Y</b> K <b>N</b> Q <b>D</b> V <b>K</b> K <b>L</b> ..	63
NTDB id 407 SMU RS04605 WP 002262865.1	....M <b>D</b> N <b>F</b> Q.....L <b>F</b> K <b>L</b> K <b>K</b> A <b>G</b> L.....T <b>N</b> L <b>N</b> I <b>L</b> N <b>I</b> D <b>Y</b> E <b>E</b> R <b>T</b> Q <b>K</b> S <b>L</b> S <b>L</b> R <b>D</b> M <b>A</b> V <b>V</b> S <b>K</b> N <b>K</b> K <b>P</b> L <b>I</b> F <b>M</b> E <b>H</b> Y <b>K</b> N <b>L</b> D <b>S</b> K <b>A</b> L..	62
NTDB id 525 SMSK321 RS06295 WP 000705298.1	...M <b>K</b> I <b>T</b> N <b>Y</b> E.....I <b>Y</b> K <b>L</b> K <b>K</b> S <b>G</b> L.....T <b>N</b> Q <b>Q</b> I <b>L</b> K <b>V</b> L <b>E</b> Y <b>G</b> E <b>N</b> V <b>D</b> Q <b>E</b> L <b>L</b> L <b>G</b> D <b>I</b> A <b>D</b> I <b>S</b> G <b>R</b> N <b>P</b> A <b>V</b> F <b>M</b> E <b>R</b> Y <b>F</b> Q <b>I</b> D <b>A</b> H <b>L</b> ..	64
NTDB id 497 SM12261 RS05565 WP 000705318.1	...M <b>K</b> I <b>T</b> N <b>Y</b> E.....I <b>Y</b> K <b>L</b> K <b>K</b> S <b>G</b> L.....T <b>N</b> Q <b>Q</b> V <b>L</b> A <b>V</b> L <b>E</b> Y <b>G</b> E <b>N</b> V <b>D</b> Q <b>E</b> L <b>L</b> L <b>G</b> D <b>I</b> A <b>E</b> I <b>S</b> G <b>R</b> N <b>P</b> A <b>V</b> F <b>M</b> E <b>R</b> Y <b>F</b> Q <b>I</b> D <b>A</b> H <b>L</b> ..	64
NTDB id 267 KZH43 RS05590 WP 000705306.1	...M <b>K</b> I <b>T</b> N <b>Y</b> E.....I <b>Y</b> K <b>L</b> K <b>K</b> S <b>G</b> L.....T <b>N</b> Q <b>Q</b> I <b>L</b> K <b>V</b> L <b>E</b> Y <b>G</b> E <b>N</b> V <b>D</b> Q <b>E</b> L <b>L</b> L <b>G</b> D <b>I</b> A <b>D</b> I <b>S</b> G <b>R</b> N <b>P</b> A <b>V</b> F <b>M</b> E <b>R</b> Y <b>F</b> Q <b>I</b> D <b>A</b> H <b>L</b> ..	64
NTDB id 226 SPD RS05990 WP 000705306.1	...M <b>K</b> I <b>T</b> N <b>Y</b> E.....I <b>Y</b> K <b>L</b> K <b>K</b> S <b>G</b> L.....T <b>N</b> Q <b>Q</b> I <b>L</b> K <b>V</b> L <b>E</b> Y <b>G</b> E <b>N</b> V <b>D</b> Q <b>E</b> L <b>L</b> L <b>G</b> D <b>I</b> A <b>D</b> I <b>S</b> G <b>R</b> N <b>P</b> A <b>V</b> F <b>M</b> E <b>R</b> Y <b>F</b> Q <b>I</b> D <b>A</b> H <b>L</b> ..	64
NTDB id 192 SPR RS05715 WP 000705306.1	...M <b>K</b> I <b>T</b> N <b>Y</b> E.....I <b>Y</b> K <b>L</b> K <b>K</b> S <b>G</b> L.....T <b>N</b> Q <b>Q</b> I <b>L</b> K <b>V</b> L <b>E</b> Y <b>G</b> E <b>N</b> V <b>D</b> Q <b>E</b> L <b>L</b> L <b>G</b> D <b>I</b> A <b>D</b> I <b>S</b> G <b>R</b> N <b>P</b> A <b>V</b> F <b>M</b> E <b>R</b> Y <b>F</b> Q <b>I</b> D <b>A</b> H <b>L</b> ..	64
NTDB id 157 SP RS06205 WP 000705306.1	...M <b>K</b> I <b>T</b> N <b>Y</b> E.....I <b>Y</b> K <b>L</b> K <b>K</b> S <b>G</b> L.....T <b>N</b> Q <b>Q</b> I <b>L</b> K <b>V</b> L <b>E</b> Y <b>G</b> E <b>N</b> V <b>D</b> Q <b>E</b> L <b>L</b> L <b>G</b> D <b>I</b> A <b>D</b> I <b>S</b> G <b>R</b> N <b>P</b> A <b>V</b> F <b>M</b> E <b>R</b> Y <b>F</b> Q <b>I</b> D <b>A</b> H <b>L</b> ..	64
NTDB id 1094 KZH42 RS01320 WP 002224767.1	....M <b>T</b> E <b>D</b> E.....R <b>F</b> A <b>W</b> L <b>Q</b> L.A <b>F</b> T <b>P</b> Y <b>I</b> G <b>A</b> E <b>S</b> F <b>L</b> L <b>M</b> R <b>R</b> F <b>G</b> S <b>A</b> Q <b>N</b> A <b>L</b> S <b>A</b> P <b>A</b> E <b>Q</b> V <b>A</b> A <b>L</b> I <b>R</b> H.K <b>Q</b> A <b>L</b> E <b>A</b> <b>W</b> R <b>N</b> A <b>E</b> K <b>R</b> A <b>L</b> A <b>R</b>	67
NTDB id 1089 NMB RS00600 WP 002224767.1	....M <b>T</b> E <b>D</b> E.....R <b>F</b> A <b>W</b> L <b>Q</b> L.A <b>F</b> T <b>P</b> Y <b>I</b> G <b>A</b> E <b>S</b> F <b>L</b> L <b>M</b> R <b>R</b> F <b>G</b> S <b>A</b> Q <b>N</b> A <b>L</b> S <b>A</b> P <b>A</b> E <b>Q</b> V <b>A</b> A <b>L</b> I <b>R</b> H.K <b>Q</b> A <b>L</b> E <b>A</b> <b>W</b> R <b>N</b> A <b>E</b> K <b>R</b> A <b>L</b> A <b>R</b>	67
NTDB id 1120 NGFG RS10355 WP 020997408.1	....M <b>T</b> E <b>D</b> E.....R <b>F</b> A <b>W</b> L <b>Q</b> L.A <b>F</b> T <b>P</b> Y <b>I</b> G <b>A</b> E <b>S</b> F <b>L</b> L <b>M</b> R <b>S</b> F <b>G</b> S <b>A</b> Q <b>N</b> A <b>L</b> S <b>A</b> P <b>A</b> E <b>Q</b> V <b>A</b> P <b>A</b> V <b>R</b> H.K <b>H</b> A <b>L</b> E <b>A</b> <b>W</b> R <b>N</b> A <b>E</b> K <b>R</b> A <b>L</b> A <b>R</b>	67
NTDB id 1122 OK783 RS09595 WP 003705341.1	....M <b>T</b> E <b>D</b> E.....R <b>F</b> A <b>W</b> L <b>Q</b> L.A <b>F</b> T <b>P</b> Y <b>I</b> G <b>A</b> E <b>S</b> F <b>L</b> L <b>M</b> R <b>S</b> F <b>G</b> S <b>A</b> Q <b>N</b> A <b>L</b> S <b>A</b> P <b>A</b> E <b>Q</b> V <b>A</b> P <b>A</b> V <b>R</b> H.K <b>H</b> A <b>L</b> E <b>A</b> <b>W</b> R <b>N</b> A <b>E</b> K <b>R</b> A <b>L</b> A <b>R</b>	67
NTDB id 1250 GC085 RS13065 WP 027219989.1	....M <b>N</b> N <b>L</b> .....Q <b>P</b> L <b>L</b> A <b>L</b> N <b>R</b> M <b>K</b> R.I <b>G</b> P <b>R</b> T <b>V</b> L <b>K</b> L <b>Q</b> K <b>R</b> W <b>P</b> D <b>L</b> N <b>M</b> F <b>Q</b> L <b>S</b> S <b>V</b> D.L <b>E</b> E <b>A</b> G.....L <b>P</b> S <b>W</b> L <b>A</b> Q <b>T</b> I <b>K</b> N <b>F</b> D <b>P</b>	60
NTDB id 68044 BZI94 RS08605 WP 197535034.1	.....	0
NTDB id 114 BSU 16110 NP 389493.1	....M <b>D</b> Q <b>A</b> .....A <b>V</b> C <b>L</b> T <b>I</b> C <b>R</b> I <b>N</b> Q <b>L</b> L <b>S</b> P <b>S</b> L <b>L</b> ....K <b>W</b> W <b>K</b> A <b>D</b> P <b>S</b> M <b>S</b> L <b>T</b> S <b>P</b> V.L <b>Q</b> T <b>V</b> T <b>R</b> .D <b>Q</b> I <b>K</b> A <b>A</b> A <b>L</b> K <b>N</b> E <b>I</b> E <b>Q</b> F <b>Y</b> P	61
consensus	* * * * *	

logo

NTDB id 25 SA RS06185 WP 000593194.1  
 NTDB id 40 MW RS06080 WP 000593192.1  
 NTDB id 1152 A1552VC RS00200 WP 000654772.1  
 NTDB id 1399 DSB67 RS15600 WP 010645755.1  
 NTDB id 1361 HI 0985 AAC22646.1  
 NTDB id 1388 A4U84 RS04945 WP 062924099.1  
 NTDB id 1314 DR RS00625 WP 010886768.1  
 NTDB id 1037 TT RS09535 WP 011174226.1  
 NTDB id 1043 HON27 RS16615 WP 168727007.1  
 NTDB id 1073 ABD1 RS00865 WP 015451369.1  
 NTDB id 1021 ACIAD RS00975 WP 004930462.1  
 NTDB id 599 KW2 RS05940 WP 021037268.1  
 NTDB id 407 SMU RS04605 WP 002262865.1  
 NTDB id 525 SMSK321 RS06295 WP 000705298.1  
 NTDB id 497 SM12261 RS05565 WP 000705318.1  
 NTDB id 267 KZH43 RS05590 WP 000705306.1  
 NTDB id 226 SPD RS05990 WP 000705306.1  
 NTDB id 192 SPR RS05715 WP 000705306.1  
 NTDB id 157 SP RS06205 WP 000705306.1  
 NTDB id 1094 KZH42 RS01320 WP 002224767.1  
 NTDB id 1089 NMB RS00600 WP 002224767.1  
 NTDB id 1120 NGFG RS10355 WP 020997408.1  
 NTDB id 1122 OK783 RS09595 WP 003705341.1  
 NTDB id 1250 GC085 RS13065 WP 027219989.1  
 NTDB id 68044 BZI94 RS08605 WP 197535034.1  
 NTDB id 114 BSU 16110 NP 389493.1  
 consensus



\*\* \* \*\* \* \* \*\* \*\* \* \* \* \* \* \* \* \* \* \*





logo

NTDB id 25 SA RS06185 WP 000593194.1  
NTDB id 40 MW RS06080 WP 000593192.1  
NTDB id 1152 A1552VC RS00200 WP 000654772.1  
NTDB id 1399 DSB67 RS15600 WP 010645755.1  
NTDB id 1361 HI 0985 AAC22646.1  
NTDB id 1388 A4U84 RS04945 WP 062924099.1  
NTDB id 1314 DR RS00625 WP 010886768.1  
NTDB id 1037 TT RS09535 WP 011174226.1  
NTDB id 1043 HON27 RS16615 WP 168727007.1  
NTDB id 1073 ABD1 RS00865 WP 015451369.1  
NTDB id 1021 ACIAD RS00975 WP 004930462.1  
NTDB id 599 KW2 RS05940 WP 021037268.1  
NTDB id 407 SMU RS04605 WP 002262865.1  
NTDB id 525 SMSK321 RS06295 WP 000705298.1  
NTDB id 497 SM12261 RS05565 WP 000705318.1  
NTDB id 267 KZH43 RS05590 WP 000705306.1  
NTDB id 226 SPD RS05990 WP 000705306.1  
NTDB id 192 SPR RS05715 WP 000705306.1  
NTDB id 157 SP RS06205 WP 000705306.1  
NTDB id 1094 KZH42 RS01320 WP 002224767.1  
NTDB id 1089 NMB RS00600 WP 002224767.1  
NTDB id 1120 NGFG RS10355 WP 020997408.1  
NTDB id 1122 OK783 RS09595 WP 003705341.1  
NTDB id 1250 GC085 RS13065 WP 027219989.1  
NTDB id 68044 BZI94 RS08605 WP 197535034.1  
NTDB id 114 BSU 16110 NP 389493.1  
consensus

D I L E E F E L L Q N T G A S S Y S I N K G I P E K R I T A V Q T A S D Q L S L P E G K M P S E K T E N R P V G G S I L D R M G . F D P V H P D V L A G Q L A  
D I F E D Y Y I . . . . . 290  
D I F E D Y Y I . . . . . 290  
Q I H Q E L K N A L . . . . . T W S L . . . . . S E Q V P Y Q A T L F S A V Q S D E E L P F P E L L A N V G . I E A T P I D I L A S R T Q 339  
E V L N E I Q S L L . . . . . D W S I . . . . . N Q S L . . . . . D L F S A P I D E E E L P F P Q L L A N V G . N E A T P V D I L A S R T N 337  
D I L E T L Y Q H S . . I H S Q T E . I D F D Q I . . . . . A V P N Y T P P P D P R . . . R L . V E A P S H P K L Y S R I G . Y T P V S I D D L A E E F N 344  
D I L E A I A W Q R Q S V H I Q P S . L . F D T K . . . . . P . . . K Q A V K S E P K F A K N L P E L T A C Q Q Q L F E Q I S . L E P I S V D D L A K A T D 346  
D V L T E L N W G L A P A P A V . . . . . P D L P P E Q . . . . . A R V L R A L . . Q T P A T L D D L A A T T G 342  
D V L S Y L G M S A R P K . . . . . P L P . . . . . G L S P . . . . . E E E A L Y A L L Q E K K E A L P E A L A M A L G 304  
Q I I E D L A L P T Q W Q S Q Q Q N Q T . . . . . E E T N T N T P E I P E H L . . . . . I D L Y Q S L D . W V G Q N I D Q L V V H H N 345  
Q I I E D L A L P T Q W Q S Q Q Q N Q T . . . . . E E A N T N T P E I R E H L . . . . . I D L Y Q S L D . W V G Q N I D Q L V V H H N 345  
Q I I E D L A L P T H W H S Q S T A S G E A N A D . . . . . D S G K T D D A D L P D D L . . . . . L P L Y Q L L D . W Q G Q D L D Q L A Q H Y Q 350  
D I L E E Y L Y N . . . . . 282  
D I L N E F N F . . . . . 280  
D V L A E F E F . . . . . 282  
D V L A E F E F . . . . . 282  
D V L A E F E F . . . . . 282  
D V L A E F E F . . . . . 282  
D V L A E F E F . . . . . 282  
D I L N E C P G L L Q N T G A S S Y S I N K G I P E K R I T A V Q T A S D Q L S L P E G K M P S E K T E N R P V G G S I L D R M G . F D P V H P D V L A G Q L A 365  
D I L N E C P G L L Q N T G A S S Y S I N K G I P E K R I T A V Q T A S D Q L S L P E G K M P S E K T E N R P V G G S I L D R M G . F D P V H P D V L A G Q L A 365  
D I L N E C P G L L Q N T G A S S Y S I N K D T P D T G R R T V Q T A Y . . A P P P A A K M P S E G A A G G T A V G G I L D K M G . F D P I H P D V L A G Q L A 363  
D I L N E C P G L L Q N T G A S S Y S I N K D T P D T G R R A V Q T A Y . . A P P P A A K M P S E G A A G G T A V G G I L D K M G . F D P V H P D V L A G Q L A 363  
D V L D E L K I E H H Q F . . . . . T S N K P I . . . . . F S L A S G K . . . . . E N L V K F I G . F E T T T I D Q I I D R S G 328  
D I F E L P E R N V Q Y . . . . . T E P F . . . . . 147  
\*\*\* \*

290  
290  
339  
337  
344  
346  
342  
304  
345  
345  
350  
282  
280  
282  
282  
282  
282  
365  
365  
363  
363  
328  
147  
297

logo



NTDB id 25 SA RS06185 WP 000593194.1	.....	290
NTDB id 40 MW RS06080 WP 000593192.1	.....	290
NTDB id 1152 A1552VC RS00200 WP 000654772.1	IPVQDIMMQLLELELLGHVVAVPGGYIRKGRG.	371
NTDB id 1399 DSB67 RS15600 WP 010645755.1	IPVQEVMMQLLELELSGHVVAVSGGYIRKGRG.	369
NTDB id 1361 HI 0985 AAC22646.1	LSVDVLLVQLLDLELQDLIISENGLYKRV....	373
NTDB id 1388 A4U84 RS04945 WP 062924099.1	MAVETALIELLNLELLGVVKQVRGGYVIT....	375
NTDB id 1314 DR RS00625 WP 010886768.1	LSIPELQ TALVMLQLQGLAYEVGGRWSR.....	370
NTDB id 1037 TT RS09535 WP 011174226.1	IPPERVLSLLTLELKLGLARALPGGRYGP... .	334
NTDB id 1043 HON27 RS16615 WP 168727007.1	IPVSELTSSLMELELLGLCMQQSGLYLRCRS..	376
NTDB id 1073 ABD1 RS00865 WP 015451369.1	IPVSELTSSLMELELLGLCMQQSGLYLRCRS..	376
NTDB id 1021 ACIAD RS00975 WP 004930462.1	GSTAELTAQLMELELLGVCIQQSGRYLRCRSPY	383
NTDB id 599 KW2 RS05940 WP 021037268.1	.....	282
NTDB id 407 SMU RS04605 WP 002262865.1	.....	280
NTDB id 525 SMSK321 RS06295 WP 000705298.1	.....	282
NTDB id 497 SM12261 RS05565 WP 000705318.1	.....	282
NTDB id 267 KZH43 RS05590 WP 000705306.1	.....	282
NTDB id 226 SPD RS05990 WP 000705306.1	.....	282
NTDB id 192 SPR RS05715 WP 000705306.1	.....	282
NTDB id 157 SP RS06205 WP 000705306.1	.....	282
NTDB id 1094 KZH42 RS01320 WP 002224767.1	MPAADLYAALLELELDGSVAAMPGGRYQRIRT.	397
NTDB id 1089 NMB RS00600 WP 002224767.1	MPAADLYAALLELELDGSVAAMPGGRYQRIRT.	397
NTDB id 1120 NGFG RS10355 WP 020997408.1	MPAADLYAALLELELDGSVAAMPGGRYQRIRT.	395
NTDB id 1122 OK783 RS09595 WP 003705341.1	MPAADLYAALLELELDGSVAAMPGGRYQRIRT.	395
NTDB id 1250 GC085 RS13065 WP 027219989.1	YGMEQVTSGLAELELKGAVIAVPGGYIRCEYER	361
NTDB id 68044 BZI94 RS08605 WP 197535034.1	.....	147
NTDB id 114 BSU 16110 NP 389493.1	.....	297
consensus		

X non conserved  
X similar  
X ≥ 50% conserved