

logo

NTDB id 60787 R9C51 RS09215 WP 050232563.1
NTDB id 475 HSISS4 RS07005 WP 021143809.1
NTDB id 324 STU RS16140 WP 011226306.1
NTDB id 292 STER RS06940 WP 011681419.1
consensus



85
82
82
82

logo

NTDB id 60787 R9C51 RS09215 WP 050232563.1
NTDB id 475 HSISS4 RS07005 WP 021143809.1
NTDB id 324 STU RS16140 WP 011226306.1
NTDB id 292 STER RS06940 WP 011681419.1
consensus



170
167
167
167

logo

NTDB id 60787 R9C51 RS09215 WP 050232563.1
NTDB id 475 HSISS4 RS07005 WP 021143809.1
NTDB id 324 STU RS16140 WP 011226306.1
NTDB id 292 STER RS06940 WP 011681419.1
consensus



255
252
252
252

logo

NTDB id 60787 R9C51 RS09215 WP 050232563.1
NTDB id 475 HSISS4 RS07005 WP 021143809.1
NTDB id 324 STU RS16140 WP 011226306.1
NTDB id 292 STER RS06940 WP 011681419.1
consensus



340
337
337
337

logo

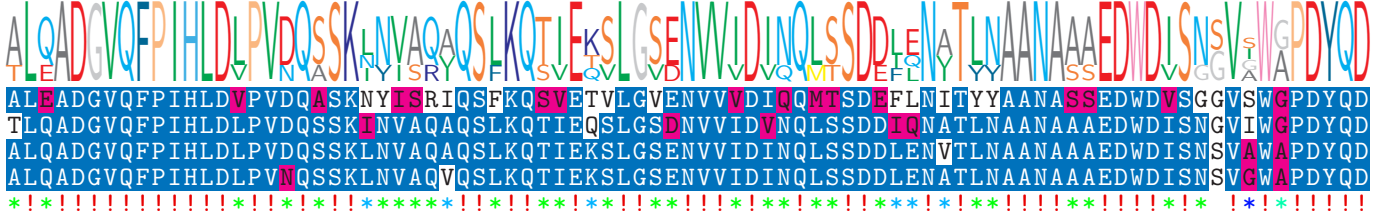
NTDB id 60787 R9C51 RS09215 WP 050232563.1
NTDB id 475 HSISS4 RS07005 WP 021143809.1
NTDB id 324 STU RS16140 WP 011226306.1
NTDB id 292 STER RS06940 WP 011681419.1
consensus



425
422
422
422

logo

NTDB id 60787 R9C51 RS09215 WP 050232563.1
NTDB id 475 HSISS4 RS07005 WP 021143809.1
NTDB id 324 STU RS16140 WP 011226306.1
NTDB id 292 STER RS06940 WP 011681419.1
consensus



510
507
507
507

logo

NTDB id 60787 R9C51 RS09215 WP 050232563.1
 NTDB id 475 HSIS4 RS07005 WP 021143809.1
 NTDB id 324 STU RS16140 WP 011226306.1
 NTDB id 292 STER RS06940 WP 011681419.1
 consensus



595
592
592
592

logo

NTDB id 60787 R9C51 RS09215 WP 050232563.1
 NTDB id 475 HSIS4 RS07005 WP 021143809.1
 NTDB id 324 STU RS16140 WP 011226306.1
 NTDB id 292 STER RS06940 WP 011681419.1
 consensus



659
656
657
657

- X non conserved
- X similar
- X ≥ 50% conserved