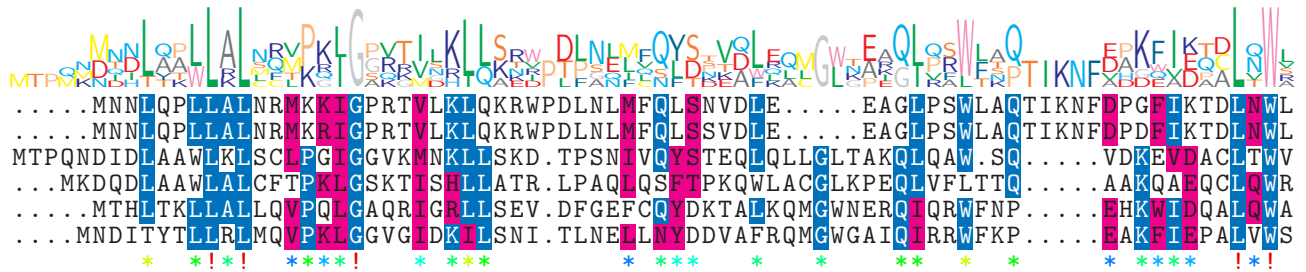


logo

NTDB id 58941 LP6 RS13560 WP 010948297.1  
 NTDB id 1250 GC085 RS13065 WP 027219989.1  
 NTDB id 1399 DSB67 RS15600 WP 010645755.1  
 NTDB id 1152 A1552VC RS00200 WP 000654772.1  
 NTDB id 1388 A4U84 RS04945 WP 062924099.1  
 NTDB id 1361 HI 0985 AAC22646.1



70  
70  
73  
71  
69  
70

consensus

logo

NTDB id 58941 LP6 RS13560 WP 010948297.1  
 NTDB id 1250 GC085 RS13065 WP 027219989.1  
 NTDB id 1399 DSB67 RS15600 WP 010645755.1  
 NTDB id 1152 A1552VC RS00200 WP 000654772.1  
 NTDB id 1388 A4U84 RS04945 WP 062924099.1  
 NTDB id 1361 HI 0985 AAC22646.1

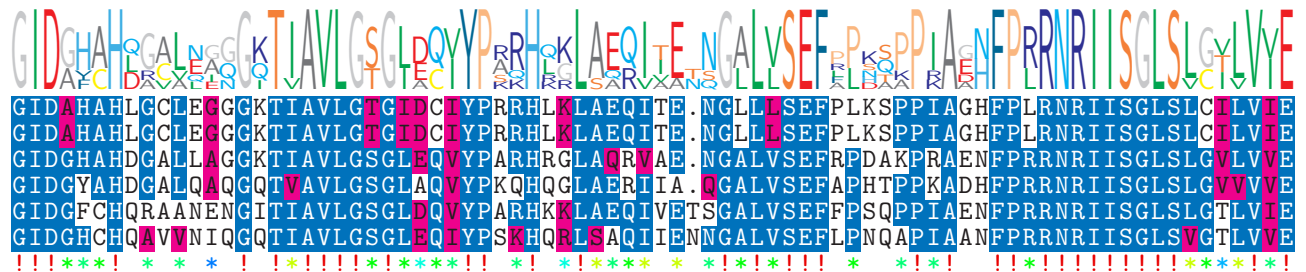


150  
150  
153  
151  
148  
149

consensus

logo

NTDB id 58941 LP6 RS13560 WP 010948297.1  
 NTDB id 1250 GC085 RS13065 WP 027219989.1  
 NTDB id 1399 DSB67 RS15600 WP 010645755.1  
 NTDB id 1152 A1552VC RS00200 WP 000654772.1  
 NTDB id 1388 A4U84 RS04945 WP 062924099.1  
 NTDB id 1361 HI 0985 AAC22646.1

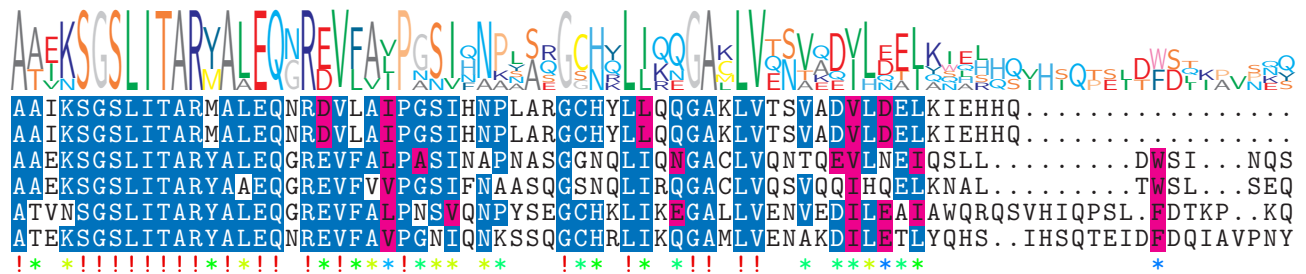


229  
229  
232  
230  
228  
229

consensus

logo

NTDB id 58941 LP6 RS13560 WP 010948297.1  
 NTDB id 1250 GC085 RS13065 WP 027219989.1  
 NTDB id 1399 DSB67 RS15600 WP 010645755.1  
 NTDB id 1152 A1552VC RS00200 WP 000654772.1  
 NTDB id 1388 A4U84 RS04945 WP 062924099.1  
 NTDB id 1361 HI 0985 AAC22646.1



292  
292  
300  
298  
305  
307

consensus

logo

NTDB id 58941 LP6 RS13560 WP 010948297.1  
 NTDB id 1250 GC085 RS13065 WP 027219989.1  
 NTDB id 1399 DSB67 RS15600 WP 010645755.1  
 NTDB id 1152 A1552VC RS00200 WP 000654772.1  
 NTDB id 1388 A4U84 RS04945 WP 062924099.1  
 NTDB id 1361 HI 0985 AAC22646.1



361  
361  
369  
371  
375  
373

consensus

 non conserved  
 similar  
  $\geq 50\%$  conserved