

logo

NTDB id 56556 OCV39 RS19955 WP 261889811.1  
NTDB id 1300 VP RS19160 WP 005479129.1  
consensus



85  
84

logo

NTDB id 56556 OCV39 RS19955 WP 261889811.1  
NTDB id 1300 VP RS19160 WP 005479129.1  
consensus



168  
169

logo

NTDB id 56556 OCV39 RS19955 WP 261889811.1  
NTDB id 1300 VP RS19160 WP 005479129.1  
consensus



253  
254

logo

NTDB id 56556 OCV39 RS19955 WP 261889811.1  
NTDB id 1300 VP RS19160 WP 005479129.1  
consensus



338  
339

logo

NTDB id 56556 OCV39 RS19955 WP 261889811.1  
NTDB id 1300 VP RS19160 WP 005479129.1  
consensus



423  
424

logo

NTDB id 56556 OCV39 RS19955 WP 261889811.1  
NTDB id 1300 VP RS19160 WP 005479129.1  
consensus



508  
509

logo

NTDB id 56556 OCV39 RS19955 WP 261889811.1  
NTDB id 1300 VP RS19160 WP 005479129.1  
consensus



593  
594

logo

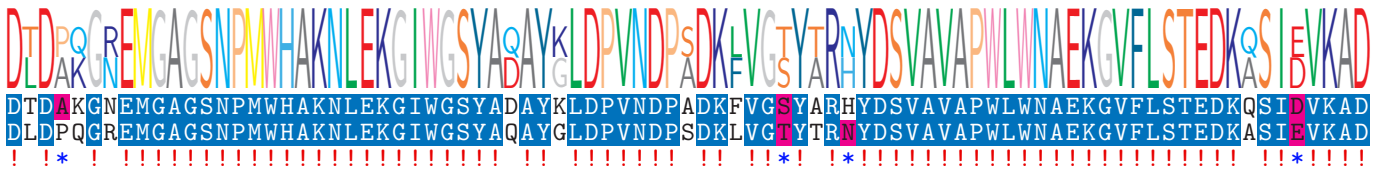
NTDB id 56556 OCV39 RS19955 WP 261889811.1  
NTDB id 1300 VP RS19160 WP 005479129.1  
consensus



678  
679

logo

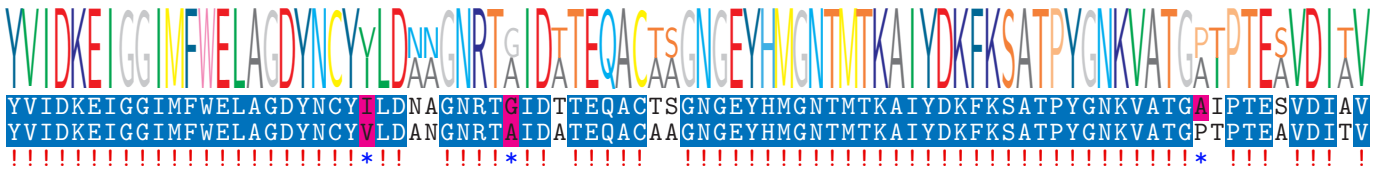
NTDB id 56556 OCV39 RS19955 WP 261889811.1  
NTDB id 1300 VP RS19160 WP 005479129.1  
consensus



763  
764

logo

NTDB id 56556 OCV39 RS19955 WP 261889811.1  
NTDB id 1300 VP RS19160 WP 005479129.1  
consensus



848  
849

logo

NTDB id 56556 OCV39 RS19955 WP 261889811.1  
NTDB id 1300 VP RS19160 WP 005479129.1  
consensus



933  
934

logo

NTDB id 56556 OCV39 RS19955 WP 261889811.1  
NTDB id 1300 VP RS19160 WP 005479129.1  
consensus



1018  
1015

logo

NTDB id 56556 OCV39 RS19955 WP 261889811.1  
NTDB id 1300 VP RS19160 WP 005479129.1  
consensus



1057  
1054

non conserved  
 similar  
 ≥ 50% conserved