

logo

NTDB id 56514 OCV20 RS02960 WP 086774156.1
NTDB id 1143 A1552VC RS01965 WP 001883436.1
consensus



32
80

logo

NTDB id 56514 OCV20 RS02960 WP 086774156.1
NTDB id 1143 A1552VC RS01965 WP 001883436.1
consensus



112
160

logo

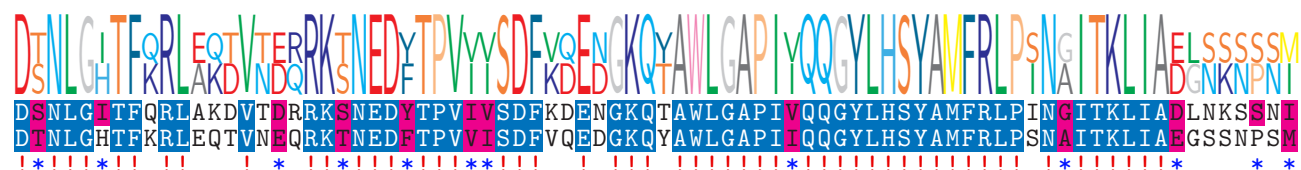
NTDB id 56514 OCV20 RS02960 WP 086774156.1
NTDB id 1143 A1552VC RS01965 WP 001883436.1
consensus



192
240

logo

NTDB id 56514 OCV20 RS02960 WP 086774156.1
NTDB id 1143 A1552VC RS01965 WP 001883436.1
consensus



272
320

logo

NTDB id 56514 OCV20 RS02960 WP 086774156.1
NTDB id 1143 A1552VC RS01965 WP 001883436.1
consensus



352
400

logo

NTDB id 56514 OCV20 RS02960 WP 086774156.1
NTDB id 1143 A1552VC RS01965 WP 001883436.1
consensus



432
480

logo

NTDB id 56514 OCV20 RS02960 WP 086774156.1
NTDB id 1143 A1552VC RS01965 WP 001883436.1
consensus



512
560

logo

NTDB id 56514 OCV20 RS02960 WP 086774156.1
NTDB id 1143 A1552VC RS01965 WP 001883436.1
consensus



592
640

logo

NTDB id 56514 OCV20 RS02960 WP 086774156.1
NTDB id 1143 A1552VC RS01965 WP 001883436.1
consensus



672
720

logo

NTDB id 56514 OCV20 RS02960 WP 086774156.1
NTDB id 1143 A1552VC RS01965 WP 001883436.1
consensus



752
799

logo

NTDB id 56514 OCV20 RS02960 WP 086774156.1
NTDB id 1143 A1552VC RS01965 WP 001883436.1
consensus



832
879

logo

NTDB id 56514 OCV20 RS02960 WP 086774156.1
NTDB id 1143 A1552VC RS01965 WP 001883436.1
consensus



912
959

logo

NTDB id 56514 OCV20 RS02960 WP 086774156.1
NTDB id 1143 A1552VC RS01965 WP 001883436.1
consensus



992
1039

logo

NTDB id 56514 OCV20 RS02960 WP 086774156.1
NTDB id 1143 A1552VC RS01965 WP 001883436.1
consensus



1072
1119

logo

NTDB id 56514 OCV20 RS02960 WP 086774156.1
NTDB id 1143 A1552VC RS01965 WP 001883436.1
consensus



- non conserved
- similar
- $\geq 50\%$ conserved