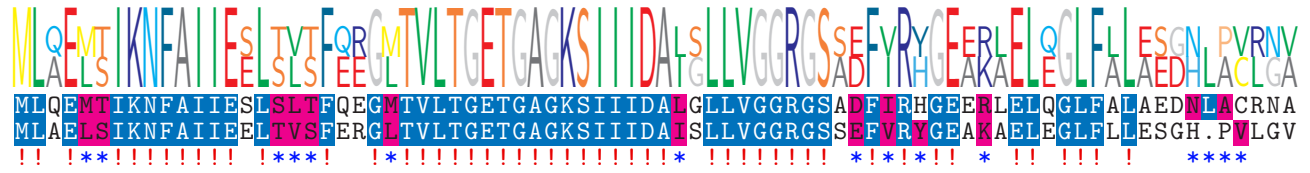


logo  
NTDB id 53114 LMOSLCC5850 RS07110 WP 014600810.1  
NTDB id 352 BSU 24240 NP 390304.2  
consensus



80  
79

logo  
NTDB id 53114 LMOSLCC5850 RS07110 WP 014600810.1  
NTDB id 352 BSU 24240 NP 390304.2  
consensus



160  
159

logo  
NTDB id 53114 LMOSLCC5850 RS07110 WP 014600810.1  
NTDB id 352 BSU 24240 NP 390304.2  
consensus



240  
239

logo  
NTDB id 53114 LMOSLCC5850 RS07110 WP 014600810.1  
NTDB id 352 BSU 24240 NP 390304.2  
consensus



320  
319

logo  
NTDB id 53114 LMOSLCC5850 RS07110 WP 014600810.1  
NTDB id 352 BSU 24240 NP 390304.2  
consensus



400  
399

logo  
NTDB id 53114 LMOSLCC5850 RS07110 WP 014600810.1  
NTDB id 352 BSU 24240 NP 390304.2  
consensus



466  
479

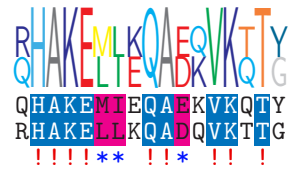
logo  
NTDB id 53114 LMOSLCC5850 RS07110 WP 014600810.1  
NTDB id 352 BSU 24240 NP 390304.2  
consensus



546  
559

logo

NTDB id 53114 LMOSLCC5850 RS07110 WP 014600810.1  
NTDB id 352 BSU 24240 NP 390304.2  
consensus



563  
576

- non conserved
- similar
- ≥ 50% conserved