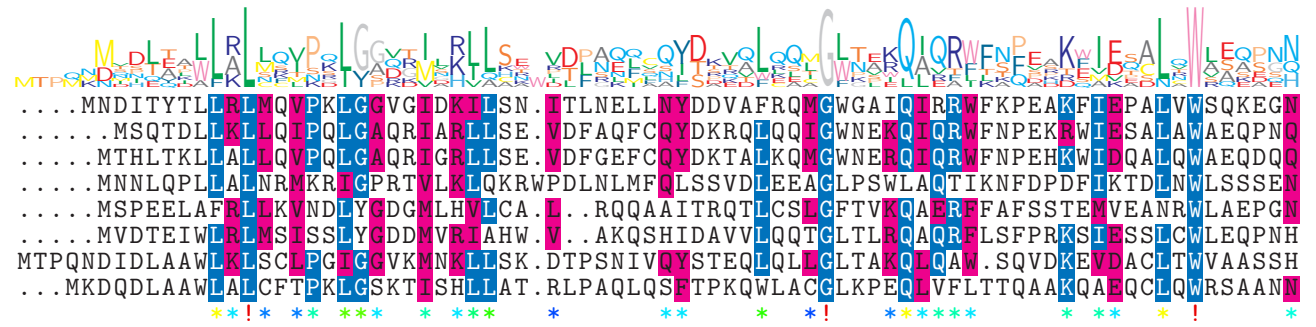


logo

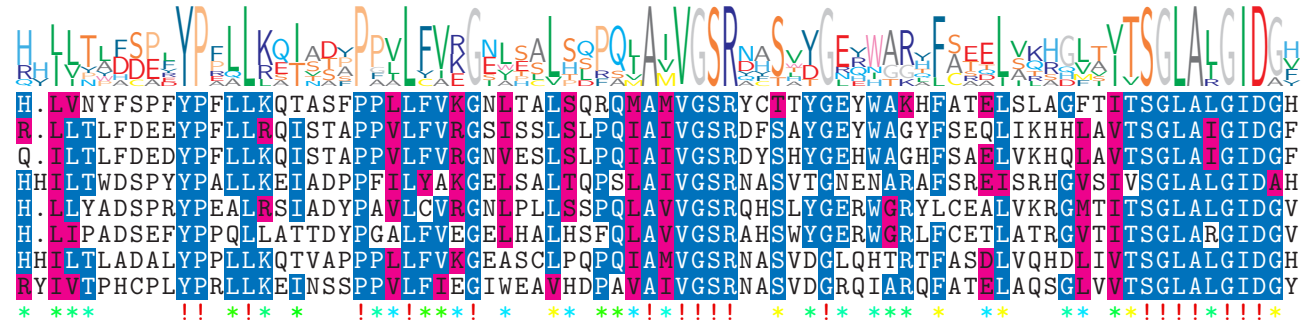
NTDB id 1361 HI 0985 AAC22646.1
 NTDB id 1466 ASU2 RS09750 WP 015674213.1
 NTDB id 1388 A4U84 RS04945 WP 062924099.1
 NTDB id 1250 GC085 RS13065 WP 027219989.1
 NTDB id 47405 H7R58 RS02435 WP 182929921.1
 NTDB id 1445 BW25113 RS17035 WP 000228551.1
 NTDB id 1399 DSB67 RS15600 WP 010645755.1
 NTDB id 1152 A1552VC RS00200 WP 000654772.1
 consensus



75
73
74
75
72
72
78
76

logo

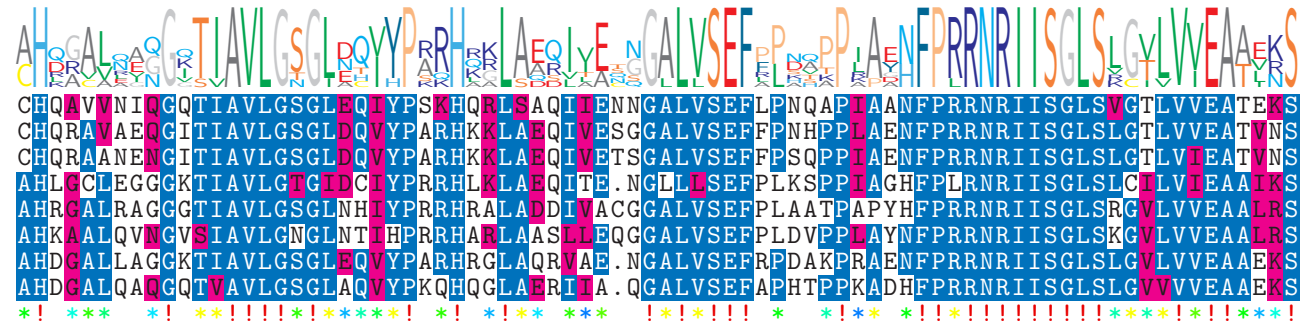
NTDB id 1361 HI 0985 AAC22646.1
 NTDB id 1466 ASU2 RS09750 WP 015674213.1
 NTDB id 1388 A4U84 RS04945 WP 062924099.1
 NTDB id 1250 GC085 RS13065 WP 027219989.1
 NTDB id 47405 H7R58 RS02435 WP 182929921.1
 NTDB id 1445 BW25113 RS17035 WP 000228551.1
 NTDB id 1399 DSB67 RS15600 WP 010645755.1
 NTDB id 1152 A1552VC RS00200 WP 000654772.1
 consensus



154
152
153
155
151
151
158
156

logo

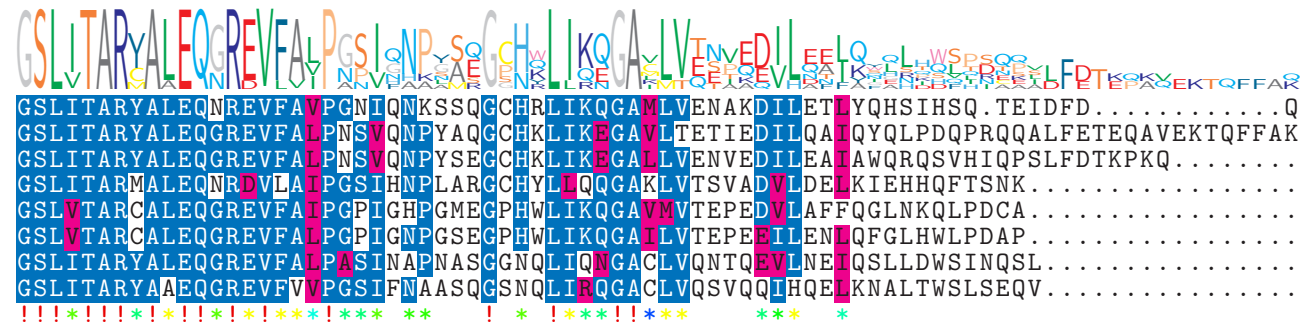
NTDB id 1361 HI 0985 AAC22646.1
 NTDB id 1466 ASU2 RS09750 WP 015674213.1
 NTDB id 1388 A4U84 RS04945 WP 062924099.1
 NTDB id 1250 GC085 RS13065 WP 027219989.1
 NTDB id 47405 H7R58 RS02435 WP 182929921.1
 NTDB id 1445 BW25113 RS17035 WP 000228551.1
 NTDB id 1399 DSB67 RS15600 WP 010645755.1
 NTDB id 1152 A1552VC RS00200 WP 000654772.1
 consensus



234
232
233
234
231
231
237
235

logo

NTDB id 1361 HI 0985 AAC22646.1
 NTDB id 1466 ASU2 RS09750 WP 015674213.1
 NTDB id 1388 A4U84 RS04945 WP 062924099.1
 NTDB id 1250 GC085 RS13065 WP 027219989.1
 NTDB id 47405 H7R58 RS02435 WP 182929921.1
 NTDB id 1445 BW25113 RS17035 WP 000228551.1
 NTDB id 1399 DSB67 RS15600 WP 010645755.1
 NTDB id 1152 A1552VC RS00200 WP 000654772.1
 consensus



301
312
305
297
294
294
301
299

logo

NTDB id 1361 HI 0985 AAC22646.1
 NTDB id 1466 ASU2 RS09750 WP 015674213.1
 NTDB id 1388 A4U84 RS04945 WP 062924099.1
 NTDB id 1250 GC085 RS13065 WP 027219989.1
 NTDB id 47405 H7R58 RS02435 WP 182929921.1
 NTDB id 1445 BW25113 RS17035 WP 000228551.1
 NTDB id 1399 DSB67 RS15600 WP 010645755.1
 NTDB id 1152 A1552VC RS00200 WP 000654772.1
 consensus



logo

NTDB id 1361 HI 0985 AAC22646.1
 NTDB id 1466 ASU2 RS09750 WP 015674213.1
 NTDB id 1388 A4U84 RS04945 WP 062924099.1
 NTDB id 1250 GC085 RS13065 WP 027219989.1
 NTDB id 47405 H7R58 RS02435 WP 182929921.1
 NTDB id 1445 BW25113 RS17035 WP 000228551.1
 NTDB id 1399 DSB67 RS15600 WP 010645755.1
 NTDB id 1152 A1552VC RS00200 WP 000654772.1
 consensus

TNVFV
 373
 384
 375
 361
 TNVFV 374
 TNVFV 374
 369
 371

- X non conserved
- X similar
- X ≥ 50% conserved