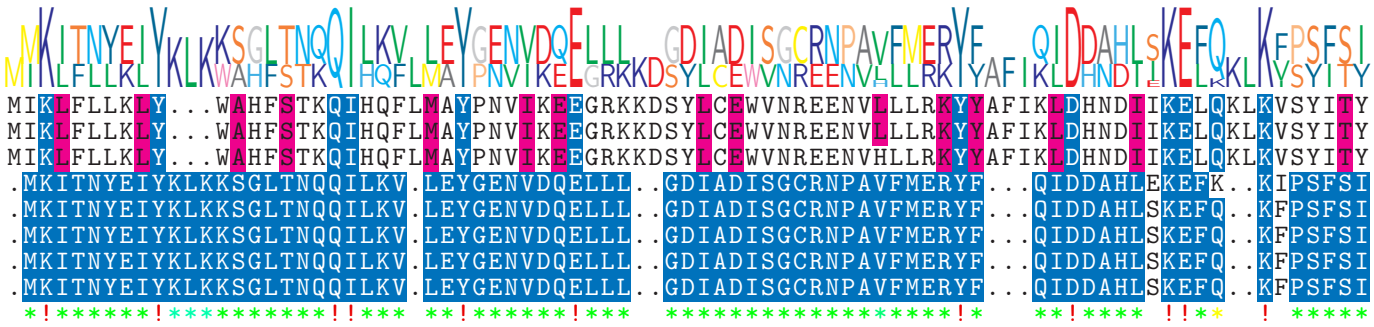


logo

NTDB id 46241 F6Y14 RS04425 WP 000593194.1
 NTDB id 25 SA RS06185 WP 000593194.1
 NTDB id 40 MW RS06080 WP 000593192.1
 NTDB id 525 SMSK321 RS06295 WP 000705298.1
 NTDB id 267 KZH43 RS05590 WP 000705306.1
 NTDB id 226 SPD RS05990 WP 000705306.1
 NTDB id 192 SPR RS05715 WP 000705306.1
 NTDB id 157 SP RS06205 WP 000705306.1
 consensus



82
82
82
76
76
76
76
76
76

logo

NTDB id 46241 F6Y14 RS04425 WP 000593194.1
 NTDB id 25 SA RS06185 WP 000593194.1
 NTDB id 40 MW RS06080 WP 000593192.1
 NTDB id 525 SMSK321 RS06295 WP 000705298.1
 NTDB id 267 KZH43 RS05590 WP 000705306.1
 NTDB id 226 SPD RS05990 WP 000705306.1
 NTDB id 192 SPR RS05715 WP 000705306.1
 NTDB id 157 SP RS06205 WP 000705306.1
 consensus



167
167
167
159
159
159
159
159

logo

NTDB id 46241 F6Y14 RS04425 WP 000593194.1
 NTDB id 25 SA RS06185 WP 000593194.1
 NTDB id 40 MW RS06080 WP 000593192.1
 NTDB id 525 SMSK321 RS06295 WP 000705298.1
 NTDB id 267 KZH43 RS05590 WP 000705306.1
 NTDB id 226 SPD RS05990 WP 000705306.1
 NTDB id 192 SPR RS05715 WP 000705306.1
 NTDB id 157 SP RS06205 WP 000705306.1
 consensus



252
252
252
244
244
244
244
244

logo

NTDB id 46241 F6Y14 RS04425 WP 000593194.1
 NTDB id 25 SA RS06185 WP 000593194.1
 NTDB id 40 MW RS06080 WP 000593192.1
 NTDB id 525 SMSK321 RS06295 WP 000705298.1
 NTDB id 267 KZH43 RS05590 WP 000705306.1
 NTDB id 226 SPD RS05990 WP 000705306.1
 NTDB id 192 SPR RS05715 WP 000705306.1
 NTDB id 157 SP RS06205 WP 000705306.1
 consensus



290
290
290
282
282
282
282
282

non conserved
 similar
 $\geq 50\%$ conserved