

logo

NTDB id 1094 KZH42 RS01320 WP 002224767.1
 NTDB id 1089 NMB RS00600 WP 002224767.1
 NTDB id 1388 A4U84 RS04945 WP 062924099.1
 NTDB id 1361 HI 0985 AAC22646.1
 NTDB id 1250 GC085 RS13065 WP 027219989.1
 NTDB id 1152 A1552VC RS00200 WP 000654772.1
 NTDB id 422386 G3U99 RS03920 WP 021456917.1
 NTDB id 1399 DSB67 RS15600 WP 010645755.1



77
77
69
70
70
71
71
73

logo

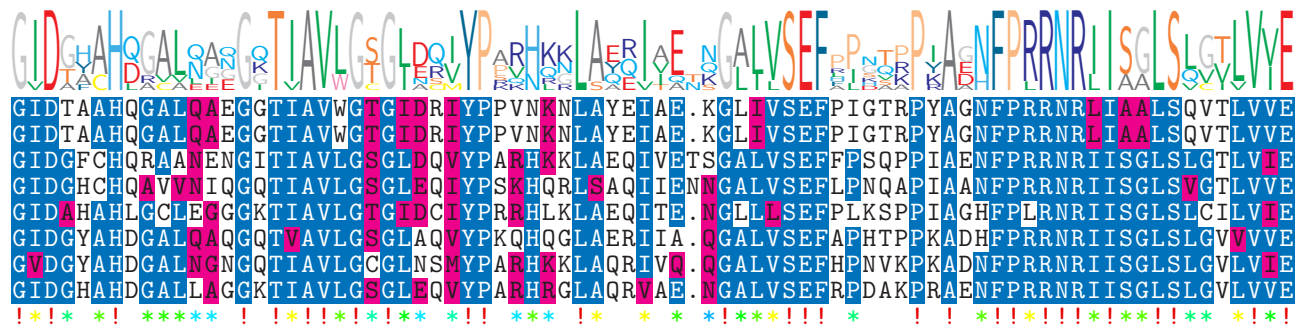
NTDB id 1094 KZH42 RS01320 WP 002224767.1
 NTDB id 1089 NMB RS00600 WP 002224767.1
 NTDB id 1388 A4U84 RS04945 WP 062924099.1
 NTDB id 1361 HI 0985 AAC22646.1
 NTDB id 1250 GC085 RS13065 WP 027219989.1
 NTDB id 1152 A1552VC RS00200 WP 000654772.1
 NTDB id 422386 G3U99 RS03920 WP 021456917.1
 NTDB id 1399 DSB67 RS15600 WP 010645755.1



156
156
148
149
150
151
151
153

logo

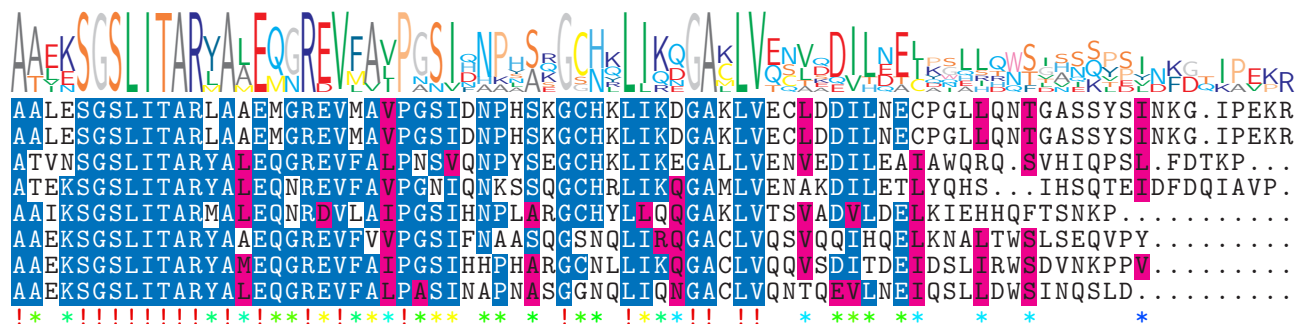
NTDB id 1094 KZH42 RS01320 WP 002224767.1
 NTDB id 1089 NMB RS00600 WP 002224767.1
 NTDB id 1388 A4U84 RS04945 WP 062924099.1
 NTDB id 1361 HI 0985 AAC22646.1
 NTDB id 1250 GC085 RS13065 WP 027219989.1
 NTDB id 1152 A1552VC RS00200 WP 000654772.1
 NTDB id 422386 G3U99 RS03920 WP 021456917.1
 NTDB id 1399 DSB67 RS15600 WP 010645755.1



235
235
228
229
229
230
230
232

logo

NTDB id 1094 KZH42 RS01320 WP 002224767.1
 NTDB id 1089 NMB RS00600 WP 002224767.1
 NTDB id 1388 A4U84 RS04945 WP 062924099.1
 NTDB id 1361 HI 0985 AAC22646.1
 NTDB id 1250 GC085 RS13065 WP 027219989.1
 NTDB id 1152 A1552VC RS00200 WP 000654772.1
 NTDB id 422386 G3U99 RS03920 WP 021456917.1
 NTDB id 1399 DSB67 RS15600 WP 010645755.1



314
314
303
305
298
301
301
302

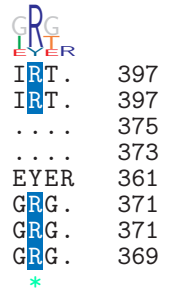
logo

NTDB id 1094 KZH42 RS01320 WP 002224767.1
 NTDB id 1089 NMB RS00600 WP 002224767.1
 NTDB id 1388 A4U84 RS04945 WP 062924099.1
 NTDB id 1361 HI 0985 AAC22646.1
 NTDB id 1250 GC085 RS13065 WP 027219989.1
 NTDB id 1152 A1552VC RS00200 WP 000654772.1
 NTDB id 422386 G3U99 RS03920 WP 021456917.1
 NTDB id 1399 DSB67 RS15600 WP 010645755.1
 consensus



logo

NTDB id 1094 KZH42 RS01320 WP 002224767.1
 NTDB id 1089 NMB RS00600 WP 002224767.1
 NTDB id 1388 A4U84 RS04945 WP 062924099.1
 NTDB id 1361 HI 0985 AAC22646.1
 NTDB id 1250 GC085 RS13065 WP 027219989.1
 NTDB id 1152 A1552VC RS00200 WP 000654772.1
 NTDB id 422386 G3U99 RS03920 WP 021456917.1
 NTDB id 1399 DSB67 RS15600 WP 010645755.1
 consensus



X non conserved
 X similar
 X ≥ 50% conserved