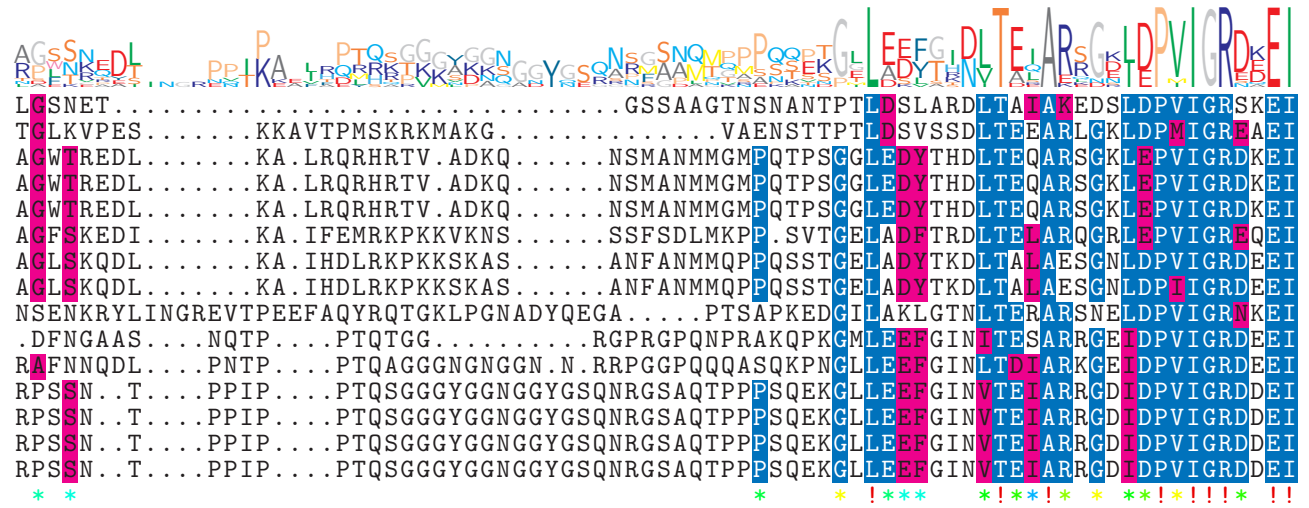


logo

NTDB id 85 BSU 00860 NP 387967.1
 NTDB id 610 V4T04 RS10165 WP 012897346.1
 NTDB id 290 KZH43 RS10025 WP 001109677.1
 NTDB id 289 SPD RS10700 WP 001109677.1
 NTDB id 287 SP RS11210 WP 001109712.1
 NTDB id 377 SMU RS09275 WP 002262344.1
 NTDB id 297 STER RS00545 WP 011680614.1
 NTDB id 329 STU RS10020 WP 011225298.1
 NTDB id 409456 GPZ88 RS09625 WP 166044279.1
 NTDB id 601 KW2 RS02615 WP 021036805.1
 NTDB id 378 SMU RS02690 WP 002263569.1
 NTDB id 241 SP RS04015 WP 000882523.1
 NTDB id 281 KZH43 RS03550 WP 000882517.1
 NTDB id 245 SPD RS03860 WP 000882517.1
 NTDB id 243 SPR RS03635 WP 000882517.1
 consensus



189
202
215
215
215
219
222
222
104
133
140
139
139
139
139

logo

NTDB id 85 BSU 00860 NP 387967.1
 NTDB id 610 V4T04 RS10165 WP 012897346.1
 NTDB id 290 KZH43 RS10025 WP 001109677.1
 NTDB id 289 SPD RS10700 WP 001109677.1
 NTDB id 287 SP RS11210 WP 001109712.1
 NTDB id 377 SMU RS09275 WP 002262344.1
 NTDB id 297 STER RS00545 WP 011680614.1
 NTDB id 329 STU RS10020 WP 011225298.1
 NTDB id 409456 GPZ88 RS09625 WP 166044279.1
 NTDB id 601 KW2 RS02615 WP 021036805.1
 NTDB id 378 SMU RS02690 WP 002263569.1
 NTDB id 241 SP RS04015 WP 000882523.1
 NTDB id 281 KZH43 RS03550 WP 000882517.1
 NTDB id 245 SPD RS03860 WP 000882517.1
 NTDB id 243 SPR RS03635 WP 000882517.1
 consensus



269
282
295
295
295
299
302
302
184
213
220
219
219
219
219

logo

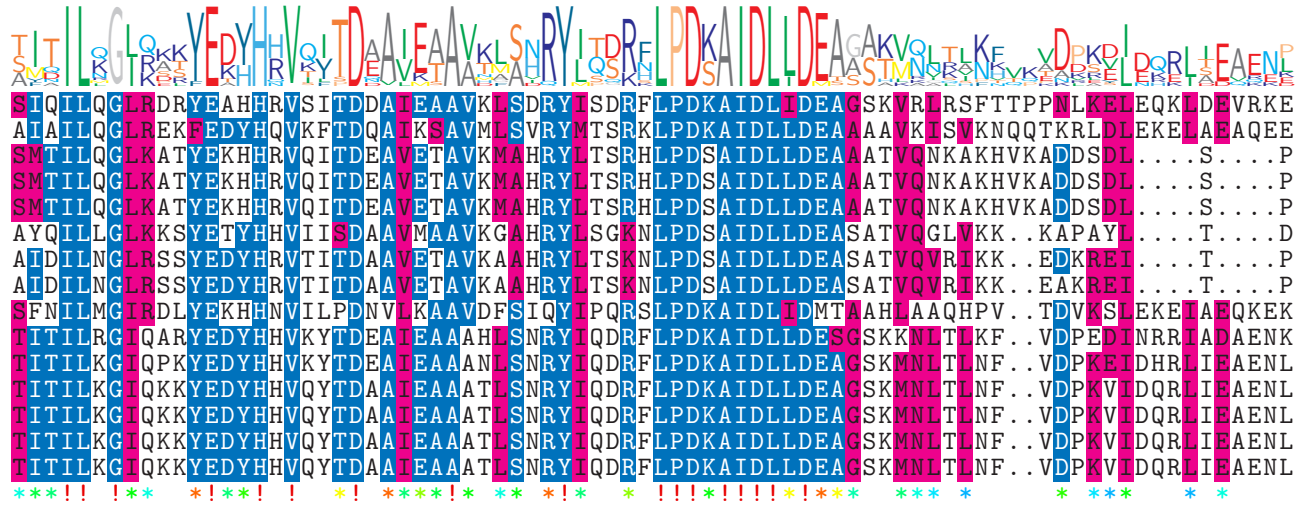
NTDB id 85 BSU 00860 NP 387967.1
 NTDB id 610 V4T04 RS10165 WP 012897346.1
 NTDB id 290 KZH43 RS10025 WP 001109677.1
 NTDB id 289 SPD RS10700 WP 001109677.1
 NTDB id 287 SP RS11210 WP 001109712.1
 NTDB id 377 SMU RS09275 WP 002262344.1
 NTDB id 297 STER RS00545 WP 011680614.1
 NTDB id 329 STU RS10020 WP 011225298.1
 NTDB id 409456 GPZ88 RS09625 WP 166044279.1
 NTDB id 601 KW2 RS02615 WP 021036805.1
 NTDB id 378 SMU RS02690 WP 002263569.1
 NTDB id 241 SP RS04015 WP 000882523.1
 NTDB id 281 KZH43 RS03550 WP 000882517.1
 NTDB id 245 SPD RS03860 WP 000882517.1
 NTDB id 243 SPR RS03635 WP 000882517.1
 consensus



346
360
373
373
373
377
380
380
264
290
297
296
296
296
296

logo

NTDB id 85 BSU 00860 NP 387967.1
 NTDB id 610 V4T04 RS10165 WP 012897346.1
 NTDB id 290 KZH43 RS10025 WP 001109677.1
 NTDB id 289 SPD RS10700 WP 001109677.1
 NTDB id 287 SP RS11210 WP 001109712.1
 NTDB id 377 SMU RS09275 WP 002262344.1
 NTDB id 297 STER RS00545 WP 011680614.1
 NTDB id 329 STU RS10020 WP 011225298.1
 NTDB id 409456 GPZ88 RS09625 WP 166044279.1
 NTDB id 601 KW2 RS02615 WP 021036805.1
 NTDB id 378 SMU RS02690 WP 002263569.1
 NTDB id 241 SP RS04015 WP 000882523.1
 NTDB id 281 KZH43 RS03550 WP 000882517.1
 NTDB id 245 SPD RS03860 WP 000882517.1
 NTDB id 243 SPR RS03635 WP 000882517.1
 consensus



426
440
445
445
445
447
450
450
342
368
375
374
374
374
374

