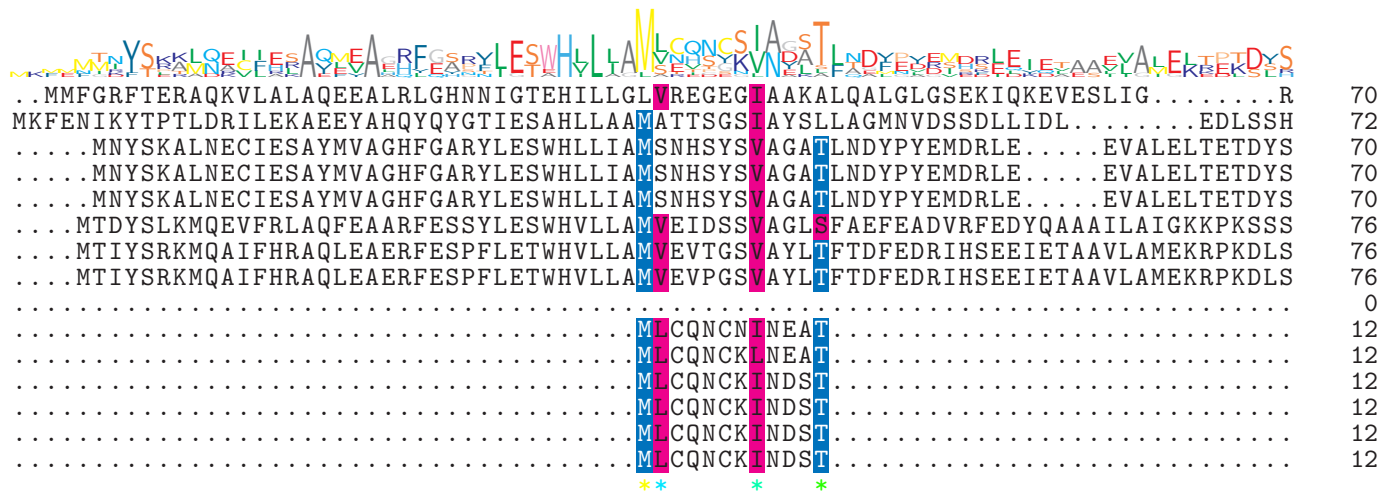


logo

NTDB id 85 BSU 00860 NP 387967.1  
 NTDB id 610 V4T04 RS10165 WP 012897346.1  
 NTDB id 290 KZH43 RS10025 WP 001109677.1  
 NTDB id 289 SPD RS10700 WP 001109677.1  
 NTDB id 287 SP RS11210 WP 001109712.1  
 NTDB id 377 SMU RS09275 WP 002262344.1  
 NTDB id 297 STER RS00545 WP 011680614.1  
 NTDB id 329 STU RS10020 WP 011225298.1  
 NTDB id 409110 GP482 RS04015 WP 158913993.1  
 NTDB id 601 KW2 RS02615 WP 021036805.1  
 NTDB id 378 SMU RS02690 WP 002263569.1  
 NTDB id 241 SP RS04015 WP 000882523.1  
 NTDB id 281 KZH43 RS03550 WP 000882517.1  
 NTDB id 245 SPD RS03860 WP 000882517.1  
 NTDB id 243 SPR RS03635 WP 000882517.1

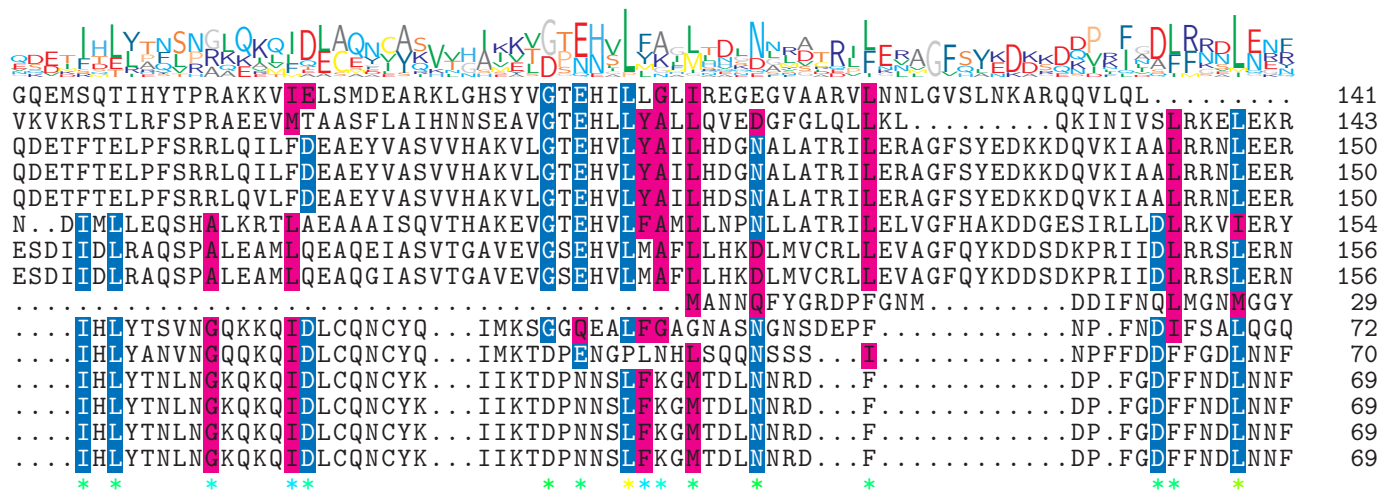
consensus



logo

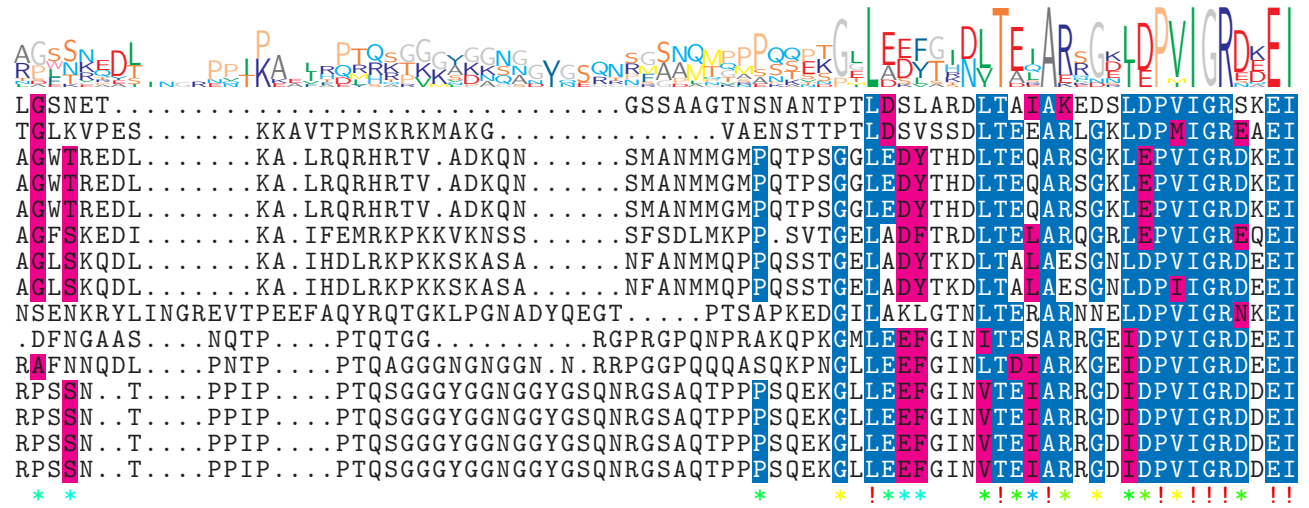
NTDB id 85 BSU 00860 NP 387967.1  
 NTDB id 610 V4T04 RS10165 WP 012897346.1  
 NTDB id 290 KZH43 RS10025 WP 001109677.1  
 NTDB id 289 SPD RS10700 WP 001109677.1  
 NTDB id 287 SP RS11210 WP 001109712.1  
 NTDB id 377 SMU RS09275 WP 002262344.1  
 NTDB id 297 STER RS00545 WP 011680614.1  
 NTDB id 329 STU RS10020 WP 011225298.1  
 NTDB id 409110 GP482 RS04015 WP 158913993.1  
 NTDB id 601 KW2 RS02615 WP 021036805.1  
 NTDB id 378 SMU RS02690 WP 002263569.1  
 NTDB id 241 SP RS04015 WP 000882523.1  
 NTDB id 281 KZH43 RS03550 WP 000882517.1  
 NTDB id 245 SPD RS03860 WP 000882517.1  
 NTDB id 243 SPR RS03635 WP 000882517.1

consensus



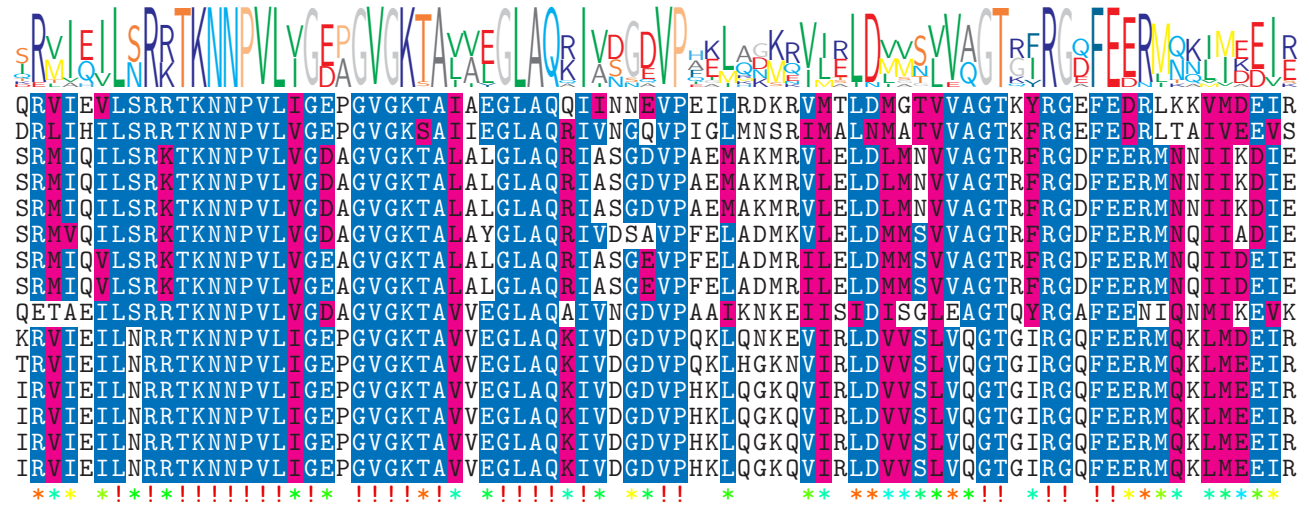
logo

NTDB id 85 BSU 00860 NP 387967.1  
 NTDB id 610 V4T04 RS10165 WP 012897346.1  
 NTDB id 290 KZH43 RS10025 WP 001109677.1  
 NTDB id 289 SPD RS10700 WP 001109677.1  
 NTDB id 287 SP RS11210 WP 001109712.1  
 NTDB id 377 SMU RS09275 WP 002262344.1  
 NTDB id 297 STER RS00545 WP 011680614.1  
 NTDB id 329 STU RS10020 WP 011225298.1  
 NTDB id 409110 GP482 RS04015 WP 158913993.1  
 NTDB id 601 KW2 RS02615 WP 021036805.1  
 NTDB id 378 SMU RS02690 WP 002263569.1  
 NTDB id 241 SP RS04015 WP 000882523.1  
 NTDB id 281 KZH43 RS03550 WP 000882517.1  
 NTDB id 245 SPD RS03860 WP 000882517.1  
 NTDB id 243 SPR RS03635 WP 000882517.1  
 consensus



logo

NTDB id 85 BSU 00860 NP 387967.1  
 NTDB id 610 V4T04 RS10165 WP 012897346.1  
 NTDB id 290 KZH43 RS10025 WP 001109677.1  
 NTDB id 289 SPD RS10700 WP 001109677.1  
 NTDB id 287 SP RS11210 WP 001109712.1  
 NTDB id 377 SMU RS09275 WP 002262344.1  
 NTDB id 297 STER RS00545 WP 011680614.1  
 NTDB id 329 STU RS10020 WP 011225298.1  
 NTDB id 409110 GP482 RS04015 WP 158913993.1  
 NTDB id 601 KW2 RS02615 WP 021036805.1  
 NTDB id 378 SMU RS02690 WP 002263569.1  
 NTDB id 241 SP RS04015 WP 000882523.1  
 NTDB id 281 KZH43 RS03550 WP 000882517.1  
 NTDB id 245 SPD RS03860 WP 000882517.1  
 NTDB id 243 SPR RS03635 WP 000882517.1  
 consensus



logo

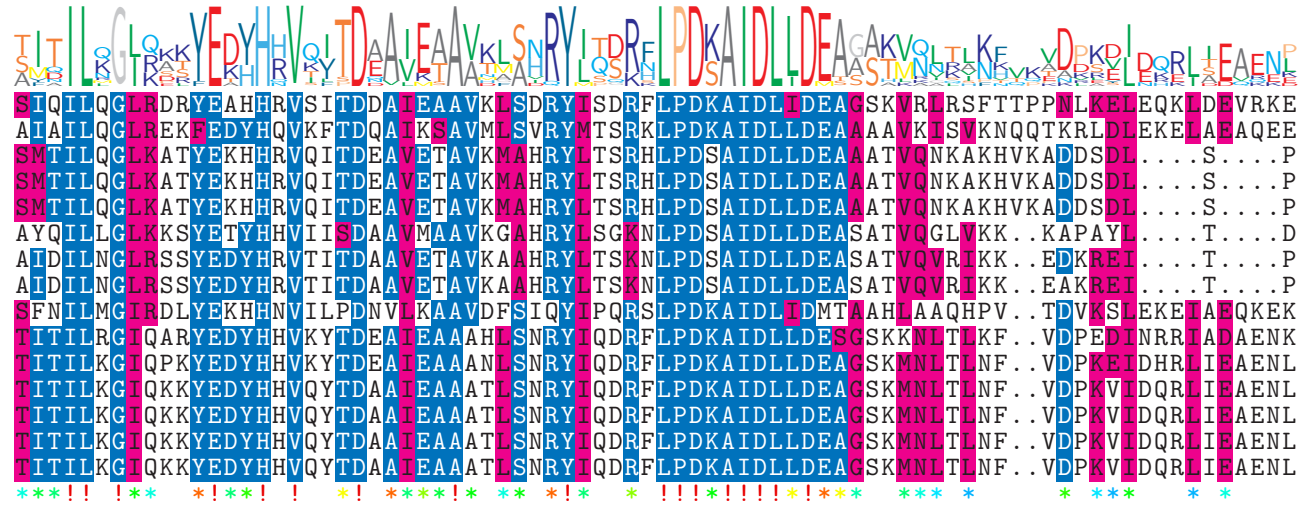
NTDB id 85 BSU 00860 NP 387967.1  
 NTDB id 610 V4T04 RS10165 WP 012897346.1  
 NTDB id 290 KZH43 RS10025 WP 001109677.1  
 NTDB id 289 SPD RS10700 WP 001109677.1  
 NTDB id 287 SP RS11210 WP 001109712.1  
 NTDB id 377 SMU RS09275 WP 002262344.1  
 NTDB id 297 STER RS00545 WP 011680614.1  
 NTDB id 329 STU RS10020 WP 011225298.1  
 NTDB id 409110 GP482 RS04015 WP 158913993.1  
 NTDB id 601 KW2 RS02615 WP 021036805.1  
 NTDB id 378 SMU RS02690 WP 002263569.1  
 NTDB id 241 SP RS04015 WP 000882523.1  
 NTDB id 281 KZH43 RS03550 WP 000882517.1  
 NTDB id 245 SPD RS03860 WP 000882517.1  
 NTDB id 243 SPR RS03635 WP 000882517.1  
 consensus



346  
360  
373  
373  
373  
377  
380  
380  
264  
290  
297  
296  
296  
296  
296

logo

NTDB id 85 BSU 00860 NP 387967.1  
 NTDB id 610 V4T04 RS10165 WP 012897346.1  
 NTDB id 290 KZH43 RS10025 WP 001109677.1  
 NTDB id 289 SPD RS10700 WP 001109677.1  
 NTDB id 287 SP RS11210 WP 001109712.1  
 NTDB id 377 SMU RS09275 WP 002262344.1  
 NTDB id 297 STER RS00545 WP 011680614.1  
 NTDB id 329 STU RS10020 WP 011225298.1  
 NTDB id 409110 GP482 RS04015 WP 158913993.1  
 NTDB id 601 KW2 RS02615 WP 021036805.1  
 NTDB id 378 SMU RS02690 WP 002263569.1  
 NTDB id 241 SP RS04015 WP 000882523.1  
 NTDB id 281 KZH43 RS03550 WP 000882517.1  
 NTDB id 245 SPD RS03860 WP 000882517.1  
 NTDB id 243 SPR RS03635 WP 000882517.1  
 consensus



426  
440  
445  
445  
445  
447  
450  
450  
342  
368  
375  
374  
374  
374  
374



logo

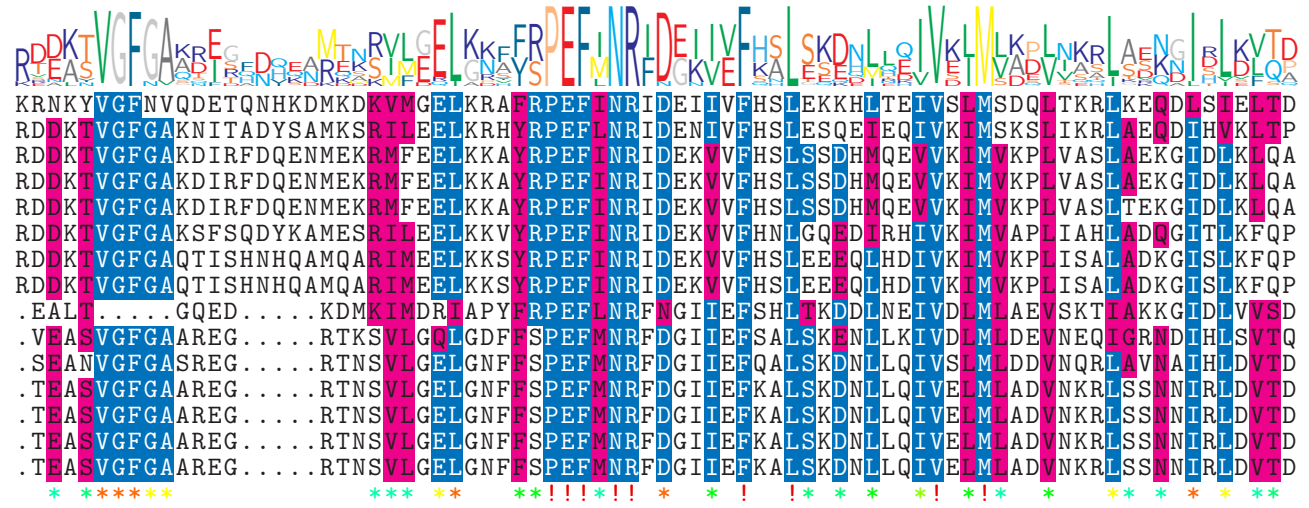
NTDB id 85 BSU 00860 NP 387967.1  
 NTDB id 610 V4T04 RS10165 WP 012897346.1  
 NTDB id 290 KZH43 RS10025 WP 001109677.1  
 NTDB id 289 SPD RS10700 WP 001109677.1  
 NTDB id 287 SP RS11210 WP 001109712.1  
 NTDB id 377 SMU RS09275 WP 002262344.1  
 NTDB id 297 STER RS00545 WP 011680614.1  
 NTDB id 329 STU RS10020 WP 011225298.1  
 NTDB id 409110 GP482 RS04015 WP 158913993.1  
 NTDB id 601 KW2 RS02615 WP 021036805.1  
 NTDB id 378 SMU RS02690 WP 002263569.1  
 NTDB id 241 SP RS04015 WP 000882523.1  
 NTDB id 281 KZH43 RS03550 WP 000882517.1  
 NTDB id 245 SPD RS03860 WP 000882517.1  
 NTDB id 243 SPR RS03635 WP 000882517.1  
 consensus



665  
674  
669  
669  
669  
672  
675  
675  
574  
600  
607  
606  
606  
606  
606

logo

NTDB id 85 BSU 00860 NP 387967.1  
 NTDB id 610 V4T04 RS10165 WP 012897346.1  
 NTDB id 290 KZH43 RS10025 WP 001109677.1  
 NTDB id 289 SPD RS10700 WP 001109677.1  
 NTDB id 287 SP RS11210 WP 001109712.1  
 NTDB id 377 SMU RS09275 WP 002262344.1  
 NTDB id 297 STER RS00545 WP 011680614.1  
 NTDB id 329 STU RS10020 WP 011225298.1  
 NTDB id 409110 GP482 RS04015 WP 158913993.1  
 NTDB id 601 KW2 RS02615 WP 021036805.1  
 NTDB id 378 SMU RS02690 WP 002263569.1  
 NTDB id 241 SP RS04015 WP 000882523.1  
 NTDB id 281 KZH43 RS03550 WP 000882517.1  
 NTDB id 245 SPD RS03860 WP 000882517.1  
 NTDB id 243 SPR RS03635 WP 000882517.1  
 consensus



745  
754  
749  
749  
749  
752  
755  
755  
643  
674  
681  
680  
680  
680  
680

logo

NTDB id 85 BSU 00860 NP 387967.1  
 NTDB id 610 V4T04 RS10165 WP 012897346.1  
 NTDB id 290 KZH43 RS10025 WP 001109677.1  
 NTDB id 289 SPD RS10700 WP 001109677.1  
 NTDB id 287 SP RS11210 WP 001109712.1  
 NTDB id 377 SMU RS09275 WP 002262344.1  
 NTDB id 297 STER RS00545 WP 011680614.1  
 NTDB id 329 STU RS10020 WP 011225298.1  
 NTDB id 409110 GP482 RS04015 WP 158913993.1  
 NTDB id 601 KW2 RS02615 WP 021036805.1  
 NTDB id 378 SMU RS02690 WP 002263569.1  
 NTDB id 241 SP RS04015 WP 000882523.1  
 NTDB id 281 KZH43 RS03550 WP 000882517.1  
 NTDB id 245 SPD RS03860 WP 000882517.1  
 NTDB id 243 SPR RS03635 WP 000882517.1  
 consensus



non conserved  
 similar  
 ≥ 50% conserved