

logo

NTDB id 40887 KW3 RS0107675 WP 001911453.1
NTDB id 1149 A1552VC RS08405 WP 000173776.1
NTDB id 1396 DSB67 RS04755 WP 010649088.1
NTDB id 1295 VP RS04795 WP 005481856.1
consensus



42
80
80
80

logo

NTDB id 40887 KW3 RS0107675 WP 001911453.1
NTDB id 1149 A1552VC RS08405 WP 000173776.1
NTDB id 1396 DSB67 RS04755 WP 010649088.1
NTDB id 1295 VP RS04795 WP 005481856.1
consensus



122
160
160
160

logo

NTDB id 40887 KW3 RS0107675 WP 001911453.1
NTDB id 1149 A1552VC RS08405 WP 000173776.1
NTDB id 1396 DSB67 RS04755 WP 010649088.1
NTDB id 1295 VP RS04795 WP 005481856.1
consensus



202
240
240
240

logo

NTDB id 40887 KW3 RS0107675 WP 001911453.1
NTDB id 1149 A1552VC RS08405 WP 000173776.1
NTDB id 1396 DSB67 RS04755 WP 010649088.1
NTDB id 1295 VP RS04795 WP 005481856.1
consensus



282
320
320
320

logo

NTDB id 40887 KW3 RS0107675 WP 001911453.1
NTDB id 1149 A1552VC RS08405 WP 000173776.1
NTDB id 1396 DSB67 RS04755 WP 010649088.1
NTDB id 1295 VP RS04795 WP 005481856.1
consensus



358
396
400
400

logo

NTDB id 40887 KW3 RS0107675 WP 001911453.1
NTDB id 1149 A1552VC RS08405 WP 000173776.1
NTDB id 1396 DSB67 RS04755 WP 010649088.1
NTDB id 1295 VP RS04795 WP 005481856.1
consensus



437
475
480
480

logo

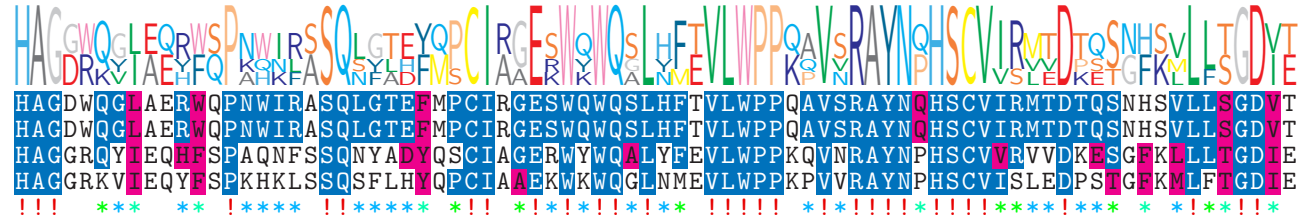
NTDB id 40887 KW3 RS0107675 WP 001911453.1
NTDB id 1149 A1552VC RS08405 WP 000173776.1
NTDB id 1396 DSB67 RS04755 WP 010649088.1
NTDB id 1295 VP RS04795 WP 005481856.1
consensus



517
555
560
560

logo

NTDB id 40887 KW3 RS0107675 WP 001911453.1
NTDB id 1149 A1552VC RS08405 WP 000173776.1
NTDB id 1396 DSB67 RS04755 WP 010649088.1
NTDB id 1295 VP RS04795 WP 005481856.1
consensus



597
635
640
640

logo

NTDB id 40887 KW3 RS0107675 WP 001911453.1
NTDB id 1149 A1552VC RS08405 WP 000173776.1
NTDB id 1396 DSB67 RS04755 WP 010649088.1
NTDB id 1295 VP RS04795 WP 005481856.1
consensus



677
715
720
720

logo

NTDB id 40887 KW3 RS0107675 WP 001911453.1
NTDB id 1149 A1552VC RS08405 WP 000173776.1
NTDB id 1396 DSB67 RS04755 WP 010649088.1
NTDB id 1295 VP RS04795 WP 005481856.1
consensus



709
747
752
752

non conserved
 similar
 ≥ 50% conserved