

logo

NTDB id 396640 GH759 RS11945 WP 003724606.1
NTDB id 480 HSISS4 RS02090 WP 002890133.1
consensus



80
75

logo

NTDB id 396640 GH759 RS11945 WP 003724606.1
NTDB id 480 HSISS4 RS02090 WP 002890133.1
consensus



160
155

logo

NTDB id 396640 GH759 RS11945 WP 003724606.1
NTDB id 480 HSISS4 RS02090 WP 002890133.1
consensus



240
235

logo

NTDB id 396640 GH759 RS11945 WP 003724606.1
NTDB id 480 HSISS4 RS02090 WP 002890133.1
consensus



320
314

logo

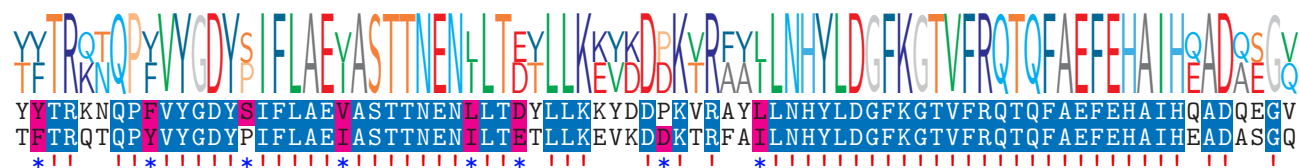
NTDB id 396640 GH759 RS11945 WP 003724606.1
NTDB id 480 HSISS4 RS02090 WP 002890133.1
consensus



400
394

logo

NTDB id 396640 GH759 RS11945 WP 003724606.1
NTDB id 480 HSISS4 RS02090 WP 002890133.1
consensus



480
474

logo

NTDB id 396640 GH759 RS11945 WP 003724606.1
NTDB id 480 HSISS4 RS02090 WP 002890133.1
consensus



560
554

logo

NTDB id 396640 GH759 RS11945 WP 003724606.1

NTDB id 480 HSISS4 RS02090 WP 002890133.1

consensus



- non conserved
- similar
- ≥ 50% conserved