

logo



NTDB id 379370 GmarT RS06025 WP 230682564.1	I I E I Y G P E S S G K T T L A L H V T I A N A Q K E G G I A A F I D A E H A L D P V W A K K L G V N I S E L L V S Q P T Y G E E G L Q I A E M L I K S N S V D V	132
NTDB id 600 KW2 RS01765 WP 011675413.1	I V E I Y G P E S S G K T T V A L H A V A A V Q K E G G I A A F I D A E N A L D P E Y A K A L G V N I D E L L S Q P D Y G E Q G L Q I A E K L I T S G A V D L	154
NTDB id 269 KZH43 RS08665 WP 001085462.1	I I E I Y G P E S S G K T T V A L H A V A Q A Q K E G G I A A F I D A E H A L D P A Y A A A L G V N I D E L L S Q P D S G E Q G L E I A G K L I D S G A V D L	153
NTDB id 228 SPD RS09265 WP 001085462.1	I I E I Y G P E S S G K T T V A L H A V A Q A Q K E G G I A A F I D A E H A L D P A Y A A A L G V N I D E L L S Q P D S G E Q G L E I A G K L I D S G A V D L	153
NTDB id 194 SPR RS08825 WP 001085462.1	I I E I Y G P E S S G K T T V A L H A V A Q A Q K E G G I A A F I D A E H A L D P A Y A A A L G V N I D E L L S Q P D S G E Q G L E I A G K L I D S G A V D L	153
NTDB id 159 SP RS09750 WP 001085462.1	I I E I Y G P E S S G K T T V A L H A V A Q A Q K E G G I A A F I D A E H A L D P A Y A A A L G V N I D E L L S Q P D S G E Q G L E I A G K L I D S G A V D L	153
NTDB id 499 SM12261 RS08315 WP 078228268.1	I I E I Y G P E S S G K T T V A L H A V A Q A Q K E G G I A A F I D A E H A L D P A Y A A A L G V N I D E L L S Q P D S G E Q G L E I A G K L I D S G A V D L	153
NTDB id 527 SMSK321 RS11065 WP 001085454.1	I I E I Y G P E S S G K T T V A L H A V A Q A Q K E G G I A A F I D A E H A L D P A Y A A A L G V N I D E L L S Q P D S G E Q G L E I A G K L I D S G A V D L	153
NTDB id 453 Spy49 1753c ACI62003.1	I I E I Y G P E S S G K T T V A L H A V A Q A Q K E G G I A A F I D A E H A L D P A Y A A A L G V N I D E L L A Q P D S G E Q G L E I A G K L I D S G A V D L	153
NTDB id 408 SMU RS09530 WP 002262392.1	I V E I Y G P E S S G K T T V A L H A V A Q A Q K D G G I A A F I D A E H A L D P A Y A A A L G V N I D E L L S Q P D S G E Q G L E I A G K L I D S G A V D L	153
NTDB id 115 BSU 16940 NP 389576.2	I I E V Y G P E S S G K T T V A L H A I A E V Q Q Q G G A A F I D A E H A L D P V Y A Q K L G V N I E E L L S Q P D T G E Q A L E I A E A L V R S G A V D I	138
NTDB id 625 LCA RS02525 WP 011374196.1	I V E I Y G P E S S G K T T V A L H A V A E V Q K Q G G T A A Y I D A E N A M D P K Y A T A L G V N I D D L L S Q P D T G E Q G L E I A D A L V S S G A V D I	140
NTDB id 1313 DR RS12030 WP 010888966.1	I T E I Y G P E S G K T T L A L A I V A Q A Q K A G G T C A F I D A E H A L D P V Y A R A L G V N T D E L L V S Q P D N G E Q A L E I M E L L V R S G A I D V	152
NTDB id 1245 Cj1673c YP 002345041.1	I I E I Y G P E S S G K T T L T L H I I A E C Q K A G G V C A F I D A E H A L D V K Y A K N L G V N T D D L Y V S Q P D F G E Q A L E I V E T I A R S G A V D L	139
NTDB id 1211 C694 RS00795 WP 000963128.1	I I E I Y G P E S S G K T T L S L H I I A E C Q K N G G V C A F I D A E H A L D V H Y A K R L G V D T E N L L V S Q P D T G E Q A L E I L E T I T R S G G I D L	141
NTDB id 1214 NCTC11637 00359 SQJ03206.1	I I E I Y G P E S S G K T T L S L H I I A E C Q K N G G V C A F I D A E H A L D V H Y A K R L G V D T E N L L V S Q P D T G E Q A L E I L E T I T R S G G I D L	141
NTDB id 1334 RAOC RS04870 WP 004918236.1	I V E I Y G P E S S G K T T L T L H A I A E A Q K V G G T A A F I D A E H A F D M H Y A E K L G I N L E E L I V S Q P D N G E Q A L E I A D S L I T R S G G V D I	148
NTDB id 1389 A4U84 RS07560 WP 021112712.1	I V E I Y G P E S S G K T T L T L S L I A Q A Q K G N K T C A F I D A E H A L D P V Y A R N L G V N T D E L L S Q P D N G E Q A L E I C D A L V R S G A V D V	156
NTDB id 1130 NGFG RS03960 WP 003688695.1	I V E I F G P E S S G K T T L C L E A V A Q C Q K N G G V C A F V D A E H A F D P V Y A R K L G V K V E E L Y L S Q P D T G E Q A L E I C D T L V R S G G I D M	140
NTDB id 1124 NGFG RS03960 WP 003688695.1	I V E I F G P E S S G K T T L C L E A V A Q C Q K N G G V C A F V D A E H A F D P V Y A R K L G V K V E E L Y L S Q P D T G E Q A L E I C D T L V R S G G I D M	140
NTDB id 1123 OK783 RS03845 WP 003688695.1	I V E I F G P E S S G K T T L C L E A V A Q C Q K N G G V C A F V D A E H A F D P V Y A R K L G V K V E E L Y L S Q P D T G E Q A L E I C D T L V R S G G I D M	140
NTDB id 1427 RS RS02760 WP 011000510.1	V V E I Y G P E S S G K T T L T L Q V V A E M Q K L G G T C A F I D A E H A L D V T Y A D K L G V K V P D L L I S Q P D T G E Q A L E I A D A L V R S G S V D L	148
NTDB id 1165 A1552VC RS01565 WP 000344154.1	I V E I F G P E S S G K T T L T L E L I A A A Q R E G K T C A F I D A E H A L D P V Y A K K L G V N I D E L L V S Q P D T G E Q A L E I C D A L A R S G A V D V	139
NTDB id 1142 GTF74 RS11550 WP 000344154.1	I V E I F G P E S S G K T T L T L E L I A A A Q R E G K T C A F I D A E H A L D P V Y A K K L G V N I D E L L V S Q P D T G E Q A L E I C D A L A R S G A V D V	139
NTDB id 1205 PSJM300 05545 AFN77183.1	I V E I Y G P E S S G K T T L T L S V I A A A Q R M G S T C A F V D A E H A L D P D Y A G K L G V N V D D L L V S Q P D T G E Q A L E I T D M L V R S N A V D V	139
NTDB id 1022 ACIAD RS06390 WP 004925639.1	I V E I Y G P E S S G K T T M T L Q A I A Q C Q K A G G T C A F I D A E H A L D P Q Y A R K L G V D I D N L L V S Q P D H G E Q A L E I A D M L V R S G A I D L	139
NTDB id 1074 ABD1 RS10195 WP 000344167.1	I I E I Y G P E S S G K T T M T L Q A I A Q C Q K S G G T C A F I D A E H A L D P Q Y A R K L G V D I D N L L V S Q P D N G E Q A L E I A D M L V R S G A I D L	139
consensus	**!***!!!!*!!!!* ! **! !* ** !***!!!!*!* *! !!*****!***!***!***!***! * **!****!*	

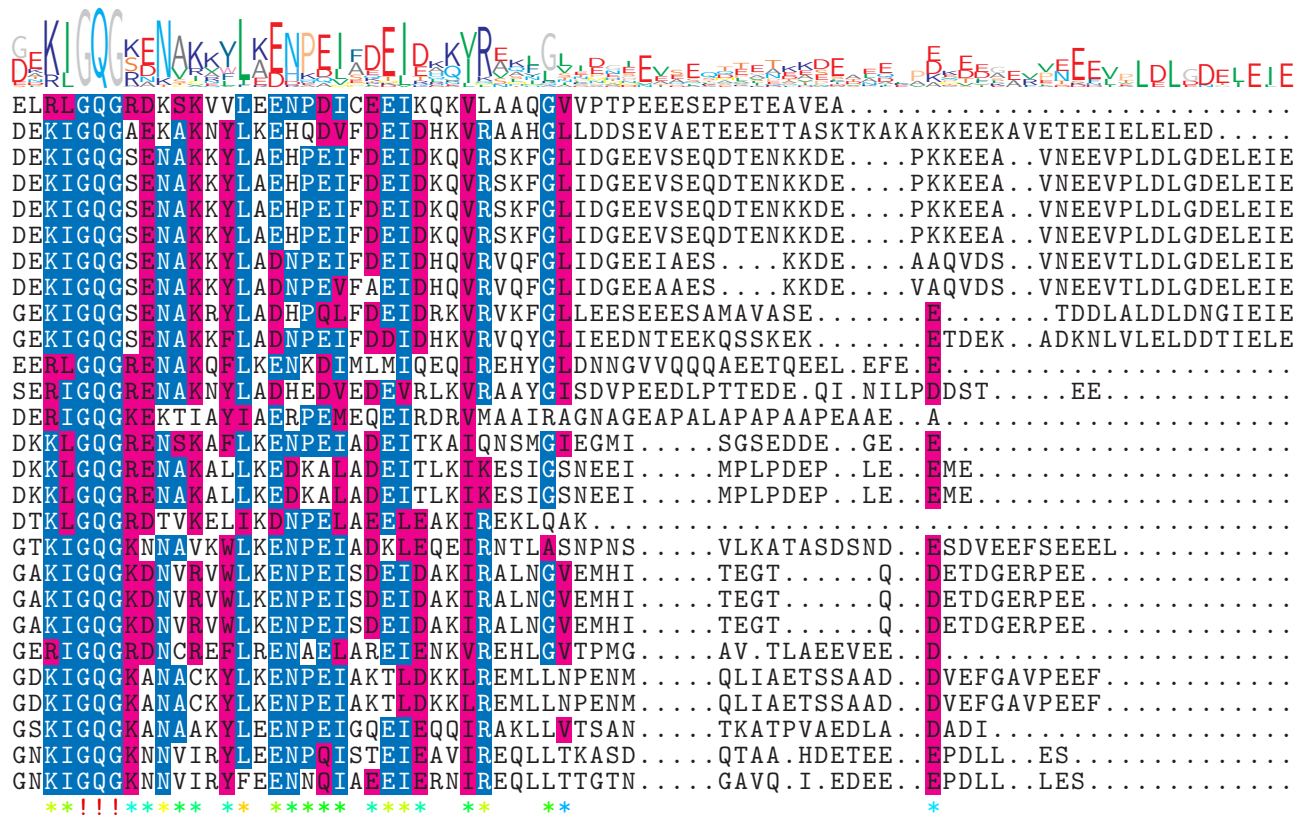
logo



NTDB id 379370 GmarT RS06025 WP 230682564.1	SVRVDVRRRIATLTKDGD....TVT	GIRMKAKIVKNIAPPFR	IAEFDMLTTGGIN	YELDLIDLAVENKI	VKKSGSWFSYG	286
NTDB id 600 KW2 RS01765 WP 011675413.1	SVRLDVRGSTKIEEGS.GDNKTQ	IGKITIKVVKNKVAPPFK	VALVDIMFGEGISST	GELLNIAVEEGI	IKKSGAWFAYN	312
NTDB id 269 KZH43 RS08665 WP 001085462.1	SVRLDVRGNTQIKGTG.DQKETN	VGKETIKVVKNKVAPPFK	EAVVEIMYGEGISKT	GELLKIASDLDI	IKKAGAWYSYK	311
NTDB id 228 SPD RS09265 WP 001085462.1	SVRLDVRGNTQIKGTG.DQKETN	VGKETIKVVKNKVAPPFK	EAVVEIMYGEGISKT	GELLKIASDLDI	IKKAGAWYSYK	311
NTDB id 194 SPR RS08825 WP 001085462.1	SVRLDVRGNTQIKGTG.DQKETN	VGKETIKVVKNKVAPPFK	EAVVEIMYGEGISKT	GELLKIASDLDI	IKKAGAWYSYK	311
NTDB id 159 SP RS09750 WP 001085462.1	SVRLDVRGNTQIKGTG.DQKETN	VGKETIKVVKNKVAPPFK	EAVVEIMYGEGISKT	GELLKIASDLDI	IKKAGAWYSYK	311
NTDB id 499 SM12261 RS08315 WP 078228268.1	SVRLDVRGNTQIKGTG.DQKDTN	VGKETIKVVKNKVAPPFK	EAFVEIMYGEGISKT	GELLKIASDLDI	IKKAGAWYSYK	311
NTDB id 527 SMSK321 RS11065 WP 001085454.1	SVRLDVRGNTQIKGTG.DQKDTN	VGKETIKVVKNKVAPPFK	EAFVEIMYGEGISKT	GELLKIASDLDI	IKKAGAWYSYK	311
NTDB id 453 Spy49 1753c ACI62003.1	SVRLDVRGTTQIKGTG.DQKDS	IGKETIKVVKNKVAPPFK	VAEVEIMYGEGISRT	GELVKIASDLDI	IKKAGAWFSYN	311
NTDB id 408 SMU RS09530 WP 002262392.1	SVRLDVRGNTQIKGTG.EQKDSN	IGKETIKVVKNKVAPPFK	EAFVEIITYGEGISRT	GELVKIASDLGI	IKKAGAWFSYN	311
NTDB id 115 BSU 16940 NP 389576.2	SVRLEVRRAEQLKQGN.....D	VMGNKTKIKVVKNKVAPPF	RTAEVDIMYGEGISKE	GEIIDLGTELDI	VQKSGSWYSYE	292
NTDB id 625 LCA RS02525 WP 011374196.1	TVRLEVRRAEQLKQGN.....D	MGNKTKIKVVKNKVAPPF	RVAEVDIMYGEGISKE	GEIIDLGTELDI	VQKSGSWYSYE	292
NTDB id 1313 DR RS12030 WP 010888966.1	SVRLDVRKIGQ....PTKVGND	AVANTVKIKTVKNKVAAP	FKEVELALVYGGKGF	QLSDLVGLAADMD	IKKAGSFYSYG	307
NTDB id 1245 Cj1673c YP 002345041.1	SVRLDVRKIVAT....L.KQNE	EPIGNRVKIKVVKNKVAPP	FQAEFDVMFGEGLSR	EGLIDYGVKLDIV	DKSGAWFSYK	294
NTDB id 1211 C694 RS00795 WP 000963128.1	SVRIDIRRIAS....L.KQNE	EQHIGNRAKIKVVKNKVAPP	FREAEFDIMFGEGISKE	GEIIDYGVKLDIV	DKSGAWLSYQ	296
NTDB id 1214 NCTC11637 00359 SQJ03206.1	SVRIDIRRIAA....L.KQNE	EQHIGNRAKIKVVKNKVAPP	FREAEFDIMFGEGISKE	GEIIDYGVKLDIV	DKSGAWLSYQ	296
NTDB id 1334 RAOC RS04870 WP 004918236.1	SVRIDIRRLSDTGKIKDKS	GEVIGNRTKIKVVKNKVAPP	FKSAEFDIMYGEGVSK	VGEILDVATDLDI	IQKSGSWFSYQ	307
NTDB id 1389 A4U84 RS07560 WP 021112712.1	SVRLDIRRCGV....V.KDG	DEIIGSETKIKVVKNKVAPP	FREVQFDIMYGEGISRM	NELLILAEANGFI	IKKSGAWFSYD	310
NTDB id 1130 NGFG RS03960 WP 003688695.1	SVRLDIRRTGS....I.KKG	EEVLGNETRIVKVIKNKVAPP	FQAEFDILYEGEGISW	EGLIDIGVKNDI	INKSGAWYSYN	294
NTDB id 1124 NGFG RS03960 WP 003688695.1	SVRLDIRRTGS....I.KKG	EEVLGNETRIVKVIKNKVAPP	FQAEFDILYEGEGISW	EGLIDIGVKNDI	INKSGAWYSYN	294
NTDB id 1123 OK783 RS03845 WP 003688695.1	SVRLDIRRTGS....I.KKG	EEVLGNETRIVKVIKNKVAPP	FQAEFDILYEGEGISW	EGLIDIGVKNDI	INKSGAWYSYN	294
NTDB id 1427 RS RS02760 WP 011000510.1	SVRLDIRRIGS....I.KKG	DEVVGNETKIKVVKNKVAPP	FREAEFDILYGAGVS	REGEIDLGVKNDI	VVEKSGAWYSYN	302
NTDB id 1165 A1552VC RS01565 WP 000344154.1	SVRLDIRRTGA....I.KEG	EEVVGNETRIKVVKNKIAP	PFKEANTQIMYGQGF	NREGELIDLVKHKM	VVEKSGAWYSYN	293
NTDB id 1142 GTF74 RS11550 WP 000344154.1	SVRLDIRRTGA....I.KEG	EEVVGNETRIKVVKNKIAP	PFKEANTQIMYGQGF	NREGELIDLVKHKM	VVEKSGAWYSYN	293
NTDB id 1205 PSJM300 05545 AFN77183.1	SVRLDIRRTGA....V.KEG	DEVVGSETRIVKVVKNKVAPP	FQAEFQILYGKGIYRN	GEIIDLGVQQGLV	EKSGAWAYK	293
NTDB id 1022 ACIAD RS06390 WP 004925639.1	SVRLDIRRIGQ....V.KEG	DEIIGSETKIKVVKNKMAP	PFREAEIFQILYGKGV	NQLGELVDLAVQQN	IVQKAGAWYSYQ	293
NTDB id 1074 ABD1 RS10195 WP 000344167.1	SVRLDIRRIGQ....V.KEG	DEIIGSETKIKVVKNKMAP	PFREAEIFQILYGKGV	NQLGELVDLAVQQN	IVQKAGAWYSYQ	293
consensus	*!!**!* *	* ** *****!*****!*****!*	* *****!**** ***** **	*** ! !*****!		

logo

NTDB id 379370 GmarT RS06025 WP 230682564.1
 NTDB id 600 KW2 RS01765 WP 011675413.1
 NTDB id 269 KZH43 RS08665 WP 001085462.1
 NTDB id 228 SPD RS09265 WP 001085462.1
 NTDB id 194 SPR RS08825 WP 001085462.1
 NTDB id 159 SP RS09750 WP 001085462.1
 NTDB id 499 SM12261 RS08315 WP 078228268.1
 NTDB id 527 SMSK321 RS11065 WP 001085454.1
 NTDB id 453 Spy49 1753c ACI62003.1
 NTDB id 408 SMU RS09530 WP 002262392.1
 NTDB id 115 BSU 16940 NP 389576.2
 NTDB id 625 LCA RS02525 WP 011374196.1
 NTDB id 1313 DR RS12030 WP 010888966.1
 NTDB id 1245 Cj1673c YP 002345041.1
 NTDB id 1211 C694 RS00795 WP 000963128.1
 NTDB id 1214 NCTC11637 00359 SQJ03206.1
 NTDB id 1334 RAOC RS04870 WP 004918236.1
 NTDB id 1389 A4U84 RS07560 WP 021112712.1
 NTDB id 1130 NGFG RS03960 WP 003688695.1
 NTDB id 1124 NGFG RS03960 WP 003688695.1
 NTDB id 1123 OK783 RS03845 WP 003688695.1
 NTDB id 1427 RS RS02760 WP 011000510.1
 NTDB id 1165 A1552VC RS01565 WP 000344154.1
 NTDB id 1142 GTF74 RS11550 WP 000344154.1
 NTDB id 1205 PSJM300 05545 AFN77183.1
 NTDB id 1022 ACIAD RS06390 WP 004925639.1
 NTDB id 1074 ABD1 RS10195 WP 000344167.1
 consensus



logo

NTDB id 379370 GmarT RS06025 WP 230682564.1	...	338
NTDB id 600 KW2 RS01765 WP 011675413.1	...	387
NTDB id 269 KZH43 RS08665 WP 001085462.1	IEE	388
NTDB id 228 SPD RS09265 WP 001085462.1	IEE	388
NTDB id 194 SPR RS08825 WP 001085462.1	IEE	388
NTDB id 159 SP RS09750 WP 001085462.1	IEE	388
NTDB id 499 SM12261 RS08315 WP 078228268.1	IEE	384
NTDB id 527 SMSK321 RS11065 WP 001085454.1	IEE	384
NTDB id 453 Spy49 1753c ACI62003.1	D..	378
NTDB id 408 SMU RS09530 WP 002262392.1	D..	383
NTDB id 115 BSU 16940 NP 389576.2	...	348
NTDB id 625 LCA RS02525 WP 011374196.1	...	355
NTDB id 1313 DR RS12030 WP 010888966.1	...	363
NTDB id 1245 Cj1673c YP 002345041.1	...	343
NTDB id 1211 C694 RS00795 WP 000963128.1	...	347
NTDB id 1214 NCTC11637 00359 SQJ03206.1	...	347
NTDB id 1334 RAOC RS04870 WP 004918236.1	...	343
NTDB id 1389 A4U84 RS07560 WP 021112712.1	...	372
NTDB id 1130 NGFG RS03960 WP 003688695.1	...	348
NTDB id 1124 NGFG RS03960 WP 003688695.1	...	348
NTDB id 1123 OK783 RS03845 WP 003688695.1	...	348
NTDB id 1427 RS RS02760 WP 011000510.1	...	352
NTDB id 1165 A1552VC RS01565 WP 000344154.1	...	354
NTDB id 1142 GTF74 RS11550 WP 000344154.1	...	354
NTDB id 1205 PSJM300 05545 AFN77183.1	...	347
NTDB id 1022 ACIAD RS06390 WP 004925639.1	...	349
NTDB id 1074 ABD1 RS10195 WP 000344167.1	...	349

consensus

X non conserved
X similar
X ≥ 50% conserved