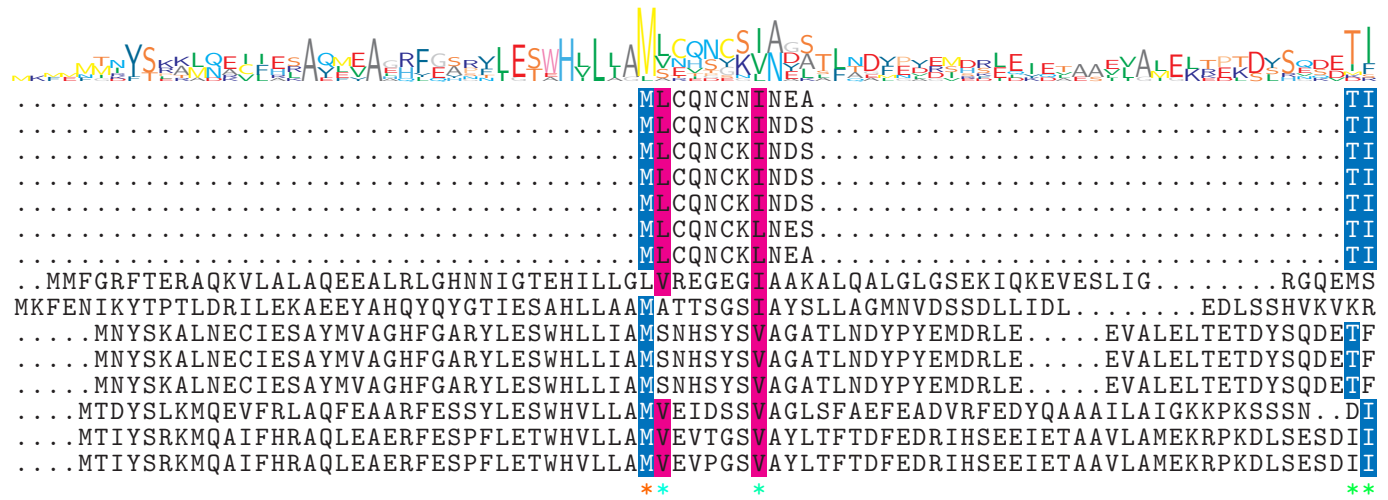


logo

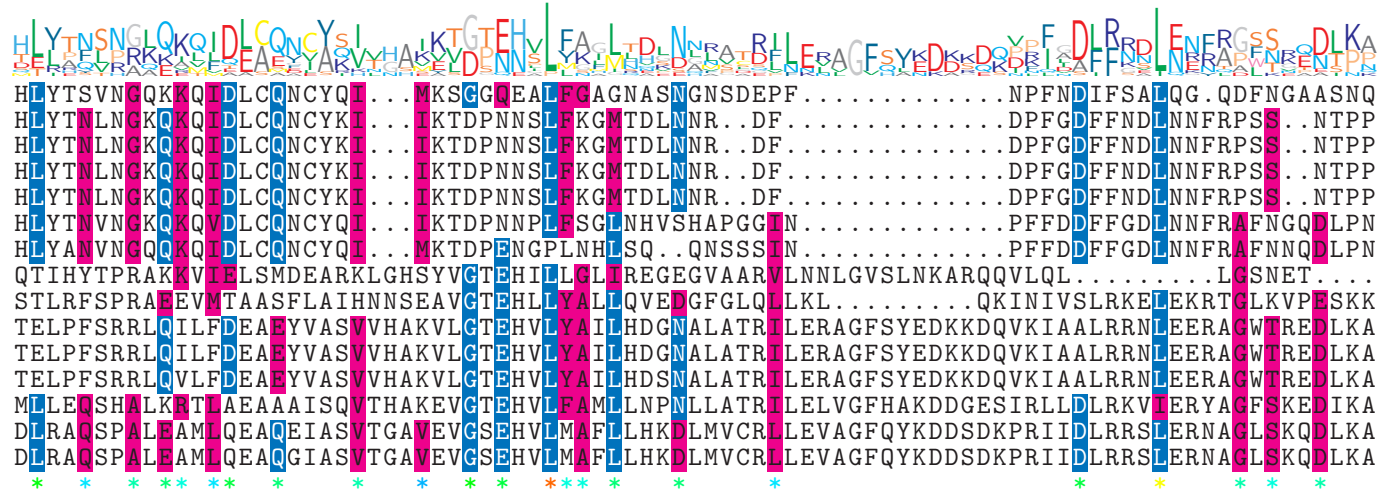
NTDB id 601 KW2 RS02615 WP 021036805.1
 NTDB id 281 KZH43 RS03550 WP 000882517.1
 NTDB id 245 SPD RS03860 WP 000882517.1
 NTDB id 243 SPR RS03635 WP 000882517.1
 NTDB id 241 SP RS04015 WP 000882523.1
 NTDB id 37870 BSA RS02850 WP 000882549.1
 NTDB id 378 SMU RS02690 WP 002263569.1
 NTDB id 85 BSU 00860 NP 387967.1
 NTDB id 610 V4T04 RS10165 WP 012897346.1
 NTDB id 290 KZH43 RS10025 WP 001109677.1
 NTDB id 289 SPD RS10700 WP 001109677.1
 NTDB id 287 SP RS11210 WP 001109712.1
 NTDB id 377 SMU RS09275 WP 002262344.1
 NTDB id 297 STER RS00545 WP 011680614.1
 NTDB id 329 STU RS10020 WP 011225298.1
 consensus



13
13
13
13
13
13
13
75
77
75
75
75
79
81
81

logo

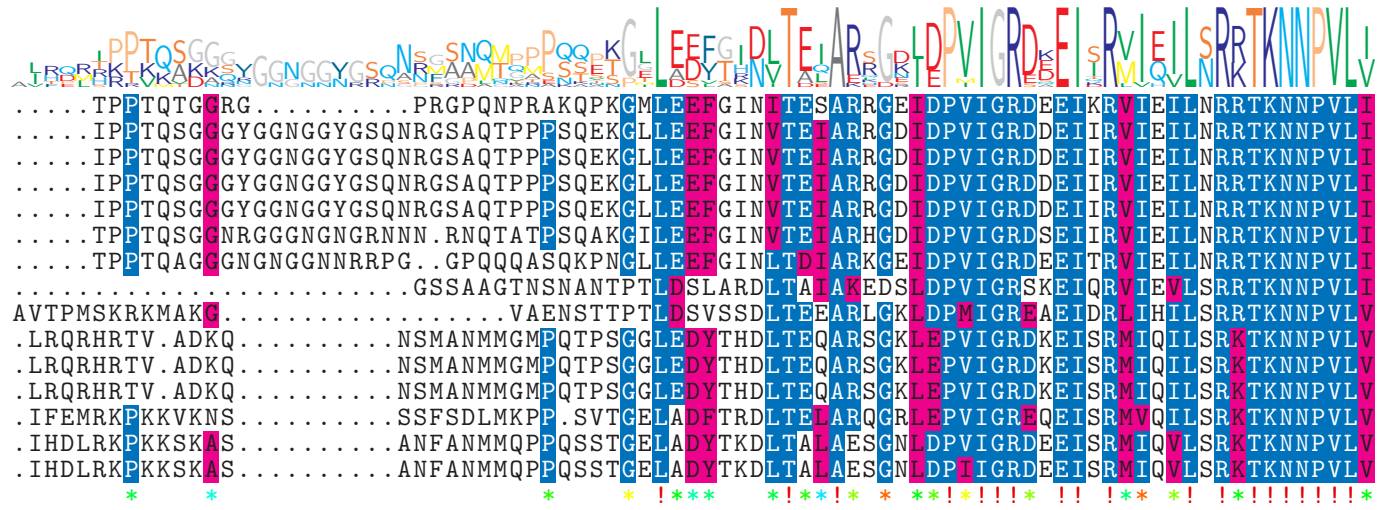
NTDB id 601 KW2 RS02615 WP 021036805.1
 NTDB id 281 KZH43 RS03550 WP 000882517.1
 NTDB id 245 SPD RS03860 WP 000882517.1
 NTDB id 243 SPR RS03635 WP 000882517.1
 NTDB id 241 SP RS04015 WP 000882523.1
 NTDB id 37870 BSA RS02850 WP 000882549.1
 NTDB id 378 SMU RS02690 WP 002263569.1
 NTDB id 85 BSU 00860 NP 387967.1
 NTDB id 610 V4T04 RS10165 WP 012897346.1
 NTDB id 290 KZH43 RS10025 WP 001109677.1
 NTDB id 289 SPD RS10700 WP 001109677.1
 NTDB id 287 SP RS11210 WP 001109712.1
 NTDB id 377 SMU RS09275 WP 002262344.1
 NTDB id 297 STER RS00545 WP 011680614.1
 NTDB id 329 STU RS10020 WP 011225298.1
 consensus



81
77
77
77
77
82
80
147
153
160
160
160
164
166
166

logo

NTDB id 601 KW2 RS02615 WP 021036805.1
 NTDB id 281 KZH43 RS03550 WP 000882517.1
 NTDB id 245 SPD RS03860 WP 000882517.1
 NTDB id 243 SPR RS03635 WP 000882517.1
 NTDB id 241 SP RS04015 WP 000882523.1
 NTDB id 37870 BSA RS02850 WP 000882549.1
 NTDB id 378 SMU RS02690 WP 002263569.1
 NTDB id 85 BSU 00860 NP 387967.1
 NTDB id 610 V4T04 RS10165 WP 012897346.1
 NTDB id 290 KZH43 RS10025 WP 001109677.1
 NTDB id 289 SPD RS10700 WP 001109677.1
 NTDB id 287 SP RS11210 WP 001109712.1
 NTDB id 377 SMU RS09275 WP 002262344.1
 NTDB id 297 STER RS00545 WP 011680614.1
 NTDB id 329 STU RS10020 WP 011225298.1
 consensus



151
157
157
157
157
161
158
207
220
233
233
233
237
240
240

logo

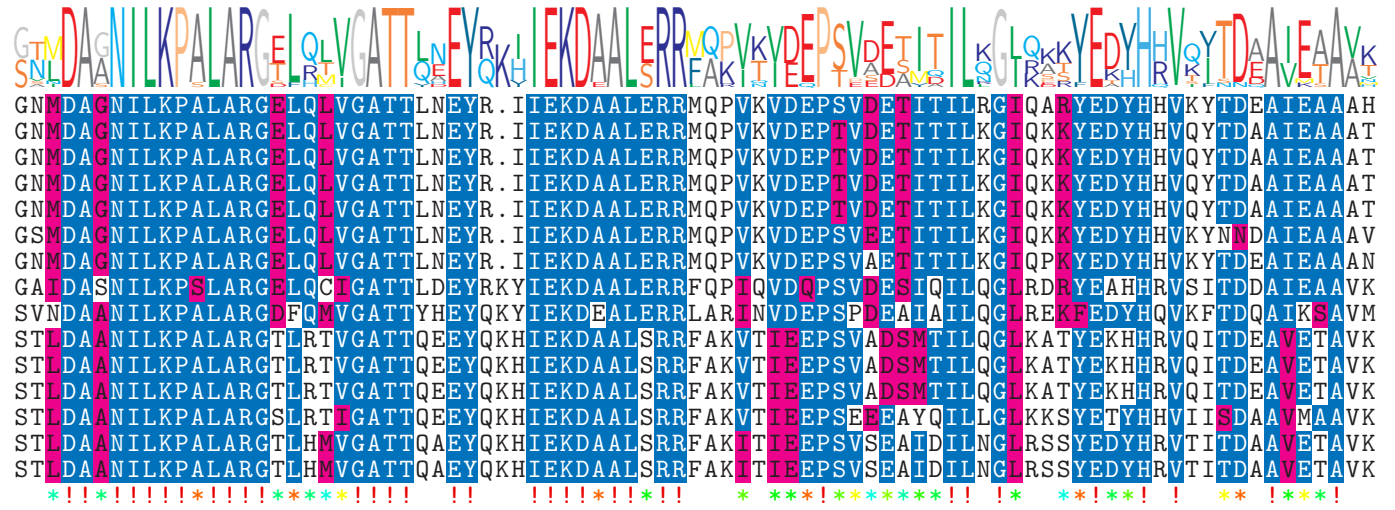
NTDB id 601 KW2 RS02615 WP 021036805.1
 NTDB id 281 KZH43 RS03550 WP 000882517.1
 NTDB id 245 SPD RS03860 WP 000882517.1
 NTDB id 243 SPR RS03635 WP 000882517.1
 NTDB id 241 SP RS04015 WP 000882523.1
 NTDB id 37870 BSA RS02850 WP 000882549.1
 NTDB id 378 SMU RS02690 WP 002263569.1
 NTDB id 85 BSU 00860 NP 387967.1
 NTDB id 610 V4T04 RS10165 WP 012897346.1
 NTDB id 290 KZH43 RS10025 WP 001109677.1
 NTDB id 289 SPD RS10700 WP 001109677.1
 NTDB id 287 SP RS11210 WP 001109712.1
 NTDB id 377 SMU RS09275 WP 002262344.1
 NTDB id 297 STER RS00545 WP 011680614.1
 NTDB id 329 STU RS10020 WP 011225298.1
 consensus



236
242
242
242
242
246
243
291
305
318
318
318
322
325
325

logo

NTDB id 601 KW2 RS02615 WP 021036805.1
 NTDB id 281 KZH43 RS03550 WP 000882517.1
 NTDB id 245 SPD RS03860 WP 000882517.1
 NTDB id 243 SPR RS03635 WP 000882517.1
 NTDB id 241 SP RS04015 WP 000882523.1
 NTDB id 37870 BSA RS02850 WP 000882549.1
 NTDB id 378 SMU RS02690 WP 002263569.1
 NTDB id 85 BSU 00860 NP 387967.1
 NTDB id 610 V4T04 RS10165 WP 012897346.1
 NTDB id 290 KZH43 RS10025 WP 001109677.1
 NTDB id 289 SPD RS10700 WP 001109677.1
 NTDB id 287 SP RS11210 WP 001109712.1
 NTDB id 377 SMU RS09275 WP 002262344.1
 NTDB id 297 STER RS00545 WP 011680614.1
 NTDB id 329 STU RS10020 WP 011225298.1
 consensus



320
 326
 326
 326
 326
 330
 327
 376
 390
 403
 403
 403
 407
 410
 410

logo

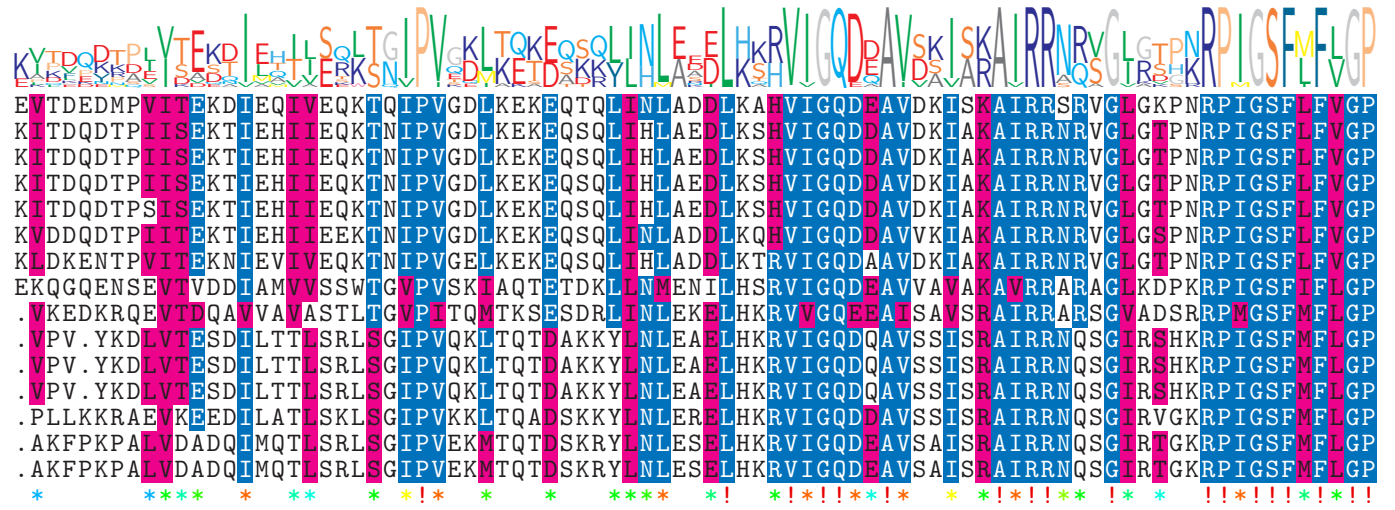
NTDB id 601 KW2 RS02615 WP 021036805.1
 NTDB id 281 KZH43 RS03550 WP 000882517.1
 NTDB id 245 SPD RS03860 WP 000882517.1
 NTDB id 243 SPR RS03635 WP 000882517.1
 NTDB id 241 SP RS04015 WP 000882523.1
 NTDB id 37870 BSA RS02850 WP 000882549.1
 NTDB id 378 SMU RS02690 WP 002263569.1
 NTDB id 85 BSU 00860 NP 387967.1
 NTDB id 610 V4T04 RS10165 WP 012897346.1
 NTDB id 290 KZH43 RS10025 WP 001109677.1
 NTDB id 289 SPD RS10700 WP 001109677.1
 NTDB id 287 SP RS11210 WP 001109712.1
 NTDB id 377 SMU RS09275 WP 002262344.1
 NTDB id 297 STER RS00545 WP 011680614.1
 NTDB id 329 STU RS10020 WP 011225298.1
 consensus



397
 403
 403
 403
 403
 407
 404
 461
 471
 467
 467
 467
 469
 472
 472

logo

NTDB id 601 KW2 RS02615 WP 021036805.1
 NTDB id 281 KZH43 RS03550 WP 000882517.1
 NTDB id 245 SPD RS03860 WP 000882517.1
 NTDB id 243 SPR RS03635 WP 000882517.1
 NTDB id 241 SP RS04015 WP 000882523.1
 NTDB id 37870 BSA RS02850 WP 000882549.1
 NTDB id 378 SMU RS02690 WP 002263569.1
 NTDB id 85 BSU 00860 NP 387967.1
 NTDB id 610 V4T04 RS10165 WP 012897346.1
 NTDB id 290 KZH43 RS10025 WP 001109677.1
 NTDB id 289 SPD RS10700 WP 001109677.1
 NTDB id 287 SP RS11210 WP 001109712.1
 NTDB id 377 SMU RS09275 WP 002262344.1
 NTDB id 297 STER RS00545 WP 011680614.1
 NTDB id 329 STU RS10020 WP 011225298.1
 consensus



482
488
488
488
488
492
489
546
555
550
550
550
553
556
556

logo

NTDB id 601 KW2 RS02615 WP 021036805.1
 NTDB id 281 KZH43 RS03550 WP 000882517.1
 NTDB id 245 SPD RS03860 WP 000882517.1
 NTDB id 243 SPR RS03635 WP 000882517.1
 NTDB id 241 SP RS04015 WP 000882523.1
 NTDB id 37870 BSA RS02850 WP 000882549.1
 NTDB id 378 SMU RS02690 WP 002263569.1
 NTDB id 85 BSU 00860 NP 387967.1
 NTDB id 610 V4T04 RS10165 WP 012897346.1
 NTDB id 290 KZH43 RS10025 WP 001109677.1
 NTDB id 289 SPD RS10700 WP 001109677.1
 NTDB id 287 SP RS11210 WP 001109712.1
 NTDB id 377 SMU RS09275 WP 002262344.1
 NTDB id 297 STER RS00545 WP 011680614.1
 NTDB id 329 STU RS10020 WP 011225298.1
 consensus



567
573
573
573
573
577
574
631
640
635
635
635
638
641
641

logo



NTDB id 601 KW2 RS02615 WP 021036805.1	ISNQTQETAETTDDEEVPAAE	748
NTDB id 281 KZH43 RS03550 WP 000882517.1	QIKSAKKAIEVKSSEKEK..	752
NTDB id 245 SPD RS03860 WP 000882517.1	QIKSAKKAIEVKSSEKEK..	752
NTDB id 243 SPR RS03635 WP 000882517.1	QIKSAKKAIEVKSSEKEK..	752
NTDB id 241 SP RS04015 WP 000882523.1	QIKSAKKAIEVKSSEKEK..	752
NTDB id 37870 BSA RS02850 WP 000882549.1	IIKSSKKTEESTKG.....	753
NTDB id 378 SMU RS02690 WP 002263569.1	VIKASNKVETVTKATSD..	753
NTDB id 85 BSU 00860 NP 387967.1	VVKTTAKTN.....	810
NTDB id 610 V4T04 RS10165 WP 012897346.1	KIAQIV.....	816
NTDB id 290 KZH43 RS10025 WP 001109677.1	KFDIA.....	810
NTDB id 289 SPD RS10700 WP 001109677.1	KFDIA.....	810
NTDB id 287 SP RS11210 WP 001109712.1	KFDIA.....	810
NTDB id 377 SMU RS09275 WP 002262344.1	KFDIV.....	813
NTDB id 297 STER RS00545 WP 011680614.1	TFTVV.....	816
NTDB id 329 STU RS10020 WP 011225298.1	TFTVV.....	816
consensus		

X non conserved
X similar
X ≥ 50% conserved