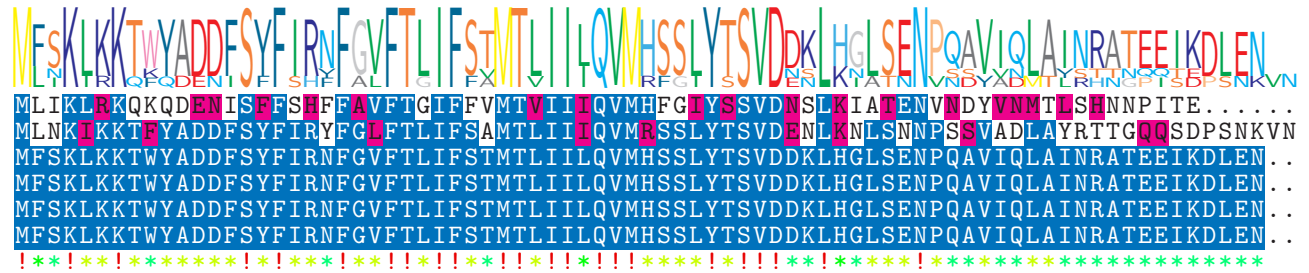


logo

NTDB id 363 SMU RS05195 WP 002262215.1  
 NTDB id 367224 FDP16 RS06895 WP 176799090.1  
 NTDB id 259 KZH43 RS03480 WP 000491790.1  
 NTDB id 218 SPD RS03780 WP 000491790.1  
 NTDB id 184 SPR RS03565 WP 000491790.1  
 NTDB id 148 SP RS03910 WP 000491790.1  
 consensus



74  
80  
78  
78  
78  
78

logo

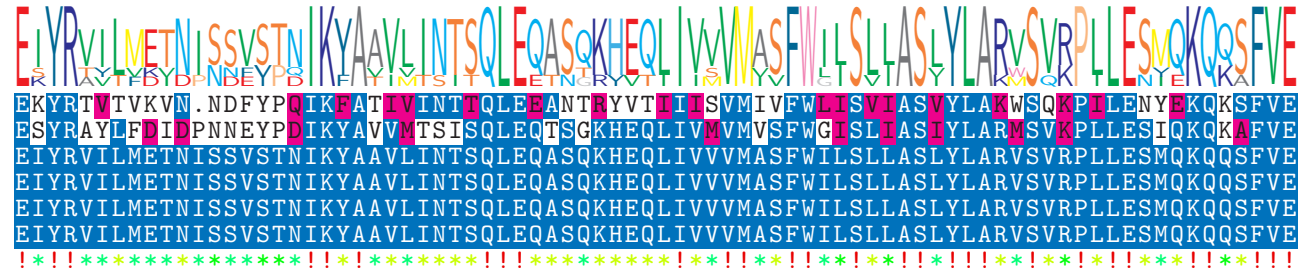
NTDB id 363 SMU RS05195 WP 002262215.1  
 NTDB id 367224 FDP16 RS06895 WP 176799090.1  
 NTDB id 259 KZH43 RS03480 WP 000491790.1  
 NTDB id 218 SPD RS03780 WP 000491790.1  
 NTDB id 184 SPR RS03565 WP 000491790.1  
 NTDB id 148 SP RS03910 WP 000491790.1  
 consensus



140  
160  
142  
142  
142  
142

logo

NTDB id 363 SMU RS05195 WP 002262215.1  
 NTDB id 367224 FDP16 RS06895 WP 176799090.1  
 NTDB id 259 KZH43 RS03480 WP 000491790.1  
 NTDB id 218 SPD RS03780 WP 000491790.1  
 NTDB id 184 SPR RS03565 WP 000491790.1  
 NTDB id 148 SP RS03910 WP 000491790.1  
 consensus



219  
240  
222  
222  
222  
222

logo

NTDB id 363 SMU RS05195 WP 002262215.1  
 NTDB id 367224 FDP16 RS06895 WP 176799090.1  
 NTDB id 259 KZH43 RS03480 WP 000491790.1  
 NTDB id 218 SPD RS03780 WP 000491790.1  
 NTDB id 184 SPR RS03565 WP 000491790.1  
 NTDB id 148 SP RS03910 WP 000491790.1  
 consensus



299  
320  
302  
302  
302  
302

logo

NTDB id 363 SMU RS05195 WP 002262215.1  
 NTDB id 367224 FDP16 RS06895 WP 176799090.1  
 NTDB id 259 KZH43 RS03480 WP 000491790.1  
 NTDB id 218 SPD RS03780 WP 000491790.1  
 NTDB id 184 SPR RS03565 WP 000491790.1  
 NTDB id 148 SP RS03910 WP 000491790.1  
 consensus



379  
400  
382  
382  
382  
382

logo

NTDB id 363 SMU RS05195 WP 002262215.1  
 NTDB id 367224 FDP16 RS06895 WP 176799090.1  
 NTDB id 259 KZH43 RS03480 WP 000491790.1  
 NTDB id 218 SPD RS03780 WP 000491790.1  
 NTDB id 184 SPR RS03565 WP 000491790.1  
 NTDB id 148 SP RS03910 WP 000491790.1  
 consensus



non conserved  
 similar  
 ≥ 50% conserved