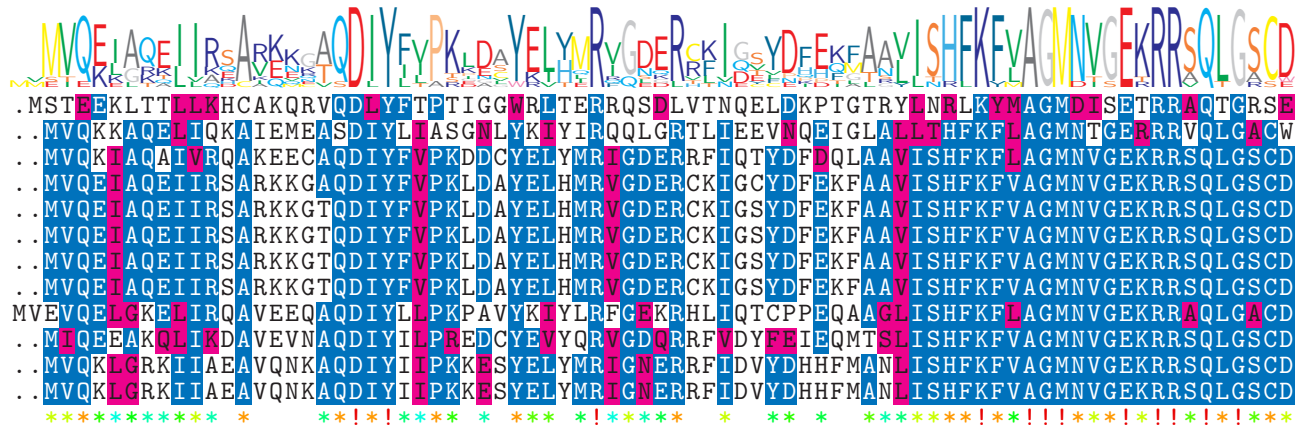


logo

NTDB id 617 LCA RS06480 WP 011375001.1
 NTDB id 586 KW2 RS10855 WP 011836048.1
 NTDB id 429 SGO RS09420 WP 012130942.1
 NTDB id 500 SM12261 RS00945 WP 000249545.1
 NTDB id 270 KZH43 RS09265 WP 000249564.1
 NTDB id 229 SPD RS09895 WP 000249564.1
 NTDB id 195 SPR RS09430 WP 000249564.1
 NTDB id 160 SP RS10380 WP 000249564.1
 NTDB id 584 DLJ51 RS00890 WP 019777327.1
 NTDB id 358763 E8M05 RS00825 WP 003062917.1
 NTDB id 385 SMU RS09035 WP 002263435.1
 NTDB id 394 FSA28 RS09405 WP 002291652.1
 consensus



79
78
78
78
78
78
78
78
78
80
78
78
78

logo

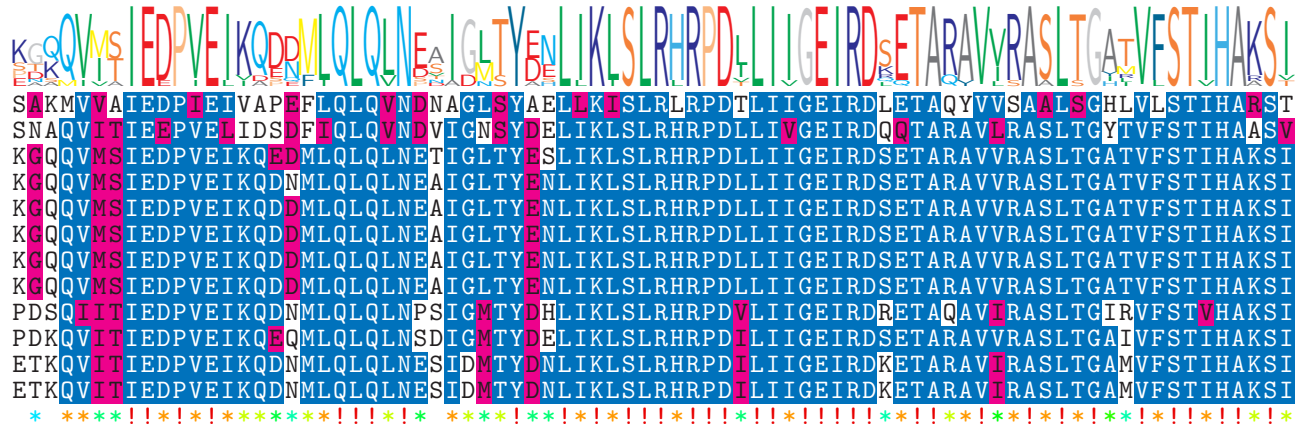
NTDB id 617 LCA RS06480 WP 011375001.1
 NTDB id 586 KW2 RS10855 WP 011836048.1
 NTDB id 429 SGO RS09420 WP 012130942.1
 NTDB id 500 SM12261 RS00945 WP 000249545.1
 NTDB id 270 KZH43 RS09265 WP 000249564.1
 NTDB id 229 SPD RS09895 WP 000249564.1
 NTDB id 195 SPR RS09430 WP 000249564.1
 NTDB id 160 SP RS10380 WP 000249564.1
 NTDB id 584 DLJ51 RS00890 WP 019777327.1
 NTDB id 358763 E8M05 RS00825 WP 003062917.1
 NTDB id 385 SMU RS09035 WP 002263435.1
 NTDB id 394 FSA28 RS09405 WP 002291652.1
 consensus



158
155
156
156
156
156
156
156
159
157
157
157

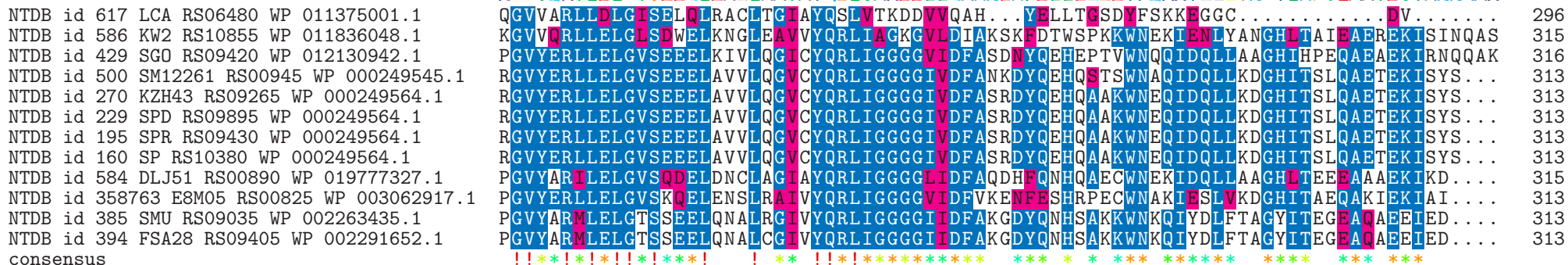
logo

NTDB id 617 LCA RS06480 WP 011375001.1
 NTDB id 586 KW2 RS10855 WP 011836048.1
 NTDB id 429 SGO RS09420 WP 012130942.1
 NTDB id 500 SM12261 RS00945 WP 000249545.1
 NTDB id 270 KZH43 RS09265 WP 000249564.1
 NTDB id 229 SPD RS09895 WP 000249564.1
 NTDB id 195 SPR RS09430 WP 000249564.1
 NTDB id 160 SP RS10380 WP 000249564.1
 NTDB id 584 DLJ51 RS00890 WP 019777327.1
 NTDB id 358763 E8M05 RS00825 WP 003062917.1
 NTDB id 385 SMU RS09035 WP 002263435.1
 NTDB id 394 FSA28 RS09405 WP 002291652.1
 consensus

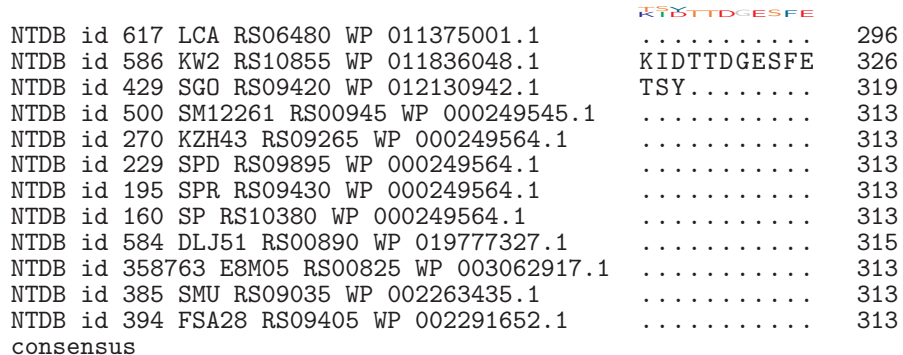


238
235
236
236
236
236
236
236
236
239
237
237

logo



logo



X non conserved
X similar
X ≥ 50% conserved