

logo

NTDB id 35409 ADEG RS01985 WP 015738427.1
 NTDB id 125 BSU 00870 NP 387968.1
 NTDB id 279 KZH43 RS00140 WP 074017595.1
 NTDB id 238 SPD RS00140 WP 074017595.1
 NTDB id 204 SPR RS00140 WP 074017595.1
 NTDB id 169 SP RS00155 WP 074017595.1
 NTDB id 509 SM12261 RS00130 WP 078228442.1
 NTDB id 537 SMSK321 RS07120 WP 080550752.1
 consensus



71
85
82
82
82
82
82
82

logo

NTDB id 35409 ADEG RS01985 WP 015738427.1
 NTDB id 125 BSU 00870 NP 387968.1
 NTDB id 279 KZH43 RS00140 WP 074017595.1
 NTDB id 238 SPD RS00140 WP 074017595.1
 NTDB id 204 SPR RS00140 WP 074017595.1
 NTDB id 169 SP RS00155 WP 074017595.1
 NTDB id 509 SM12261 RS00130 WP 078228442.1
 NTDB id 537 SMSK321 RS07120 WP 080550752.1
 consensus



155
170
166
166
166
166
166
166

logo

NTDB id 35409 ADEG RS01985 WP 015738427.1
 NTDB id 125 BSU 00870 NP 387968.1
 NTDB id 279 KZH43 RS00140 WP 074017595.1
 NTDB id 238 SPD RS00140 WP 074017595.1
 NTDB id 204 SPR RS00140 WP 074017595.1
 NTDB id 169 SP RS00155 WP 074017595.1
 NTDB id 509 SM12261 RS00130 WP 078228442.1
 NTDB id 537 SMSK321 RS07120 WP 080550752.1
 consensus



240
255
251
251
251
251
251
251

logo

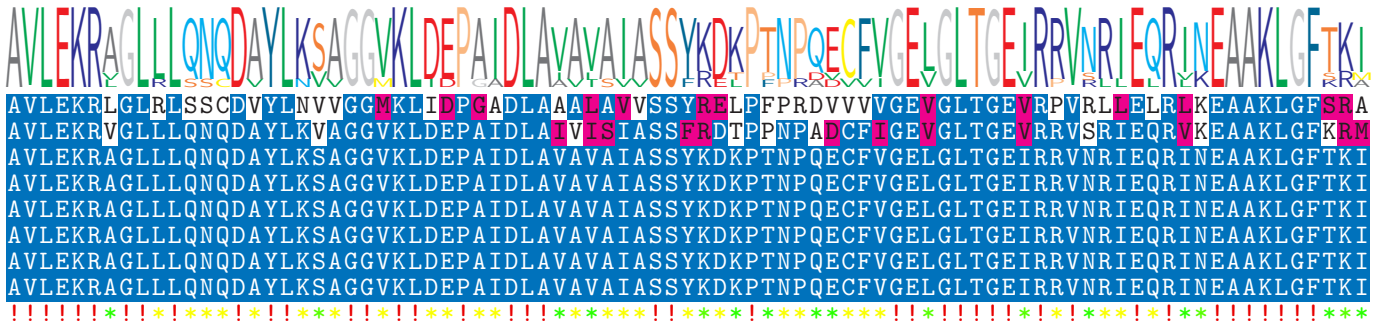
NTDB id 35409 ADEG RS01985 WP 015738427.1
 NTDB id 125 BSU 00870 NP 387968.1
 NTDB id 279 KZH43 RS00140 WP 074017595.1
 NTDB id 238 SPD RS00140 WP 074017595.1
 NTDB id 204 SPR RS00140 WP 074017595.1
 NTDB id 169 SP RS00155 WP 074017595.1
 NTDB id 509 SM12261 RS00130 WP 078228442.1
 NTDB id 537 SMSK321 RS07120 WP 080550752.1
 consensus



325
339
335
335
335
335
335
335

logo

NTDB id 35409 ADEG RS01985 WP 015738427.1
 NTDB id 125 BSU 00870 NP 387968.1
 NTDB id 279 KZH43 RS00140 WP 074017595.1
 NTDB id 238 SPD RS00140 WP 074017595.1
 NTDB id 204 SPR RS00140 WP 074017595.1
 NTDB id 169 SP RS00155 WP 074017595.1
 NTDB id 509 SM12261 RS00130 WP 078228442.1
 NTDB id 537 SMSK321 RS07120 WP 080550752.1
 consensus



410
424
420
420
420
420
420
420

logo

NTDB id 35409 ADEG RS01985 WP 015738427.1
 NTDB id 125 BSU 00870 NP 387968.1
 NTDB id 279 KZH43 RS00140 WP 074017595.1
 NTDB id 238 SPD RS00140 WP 074017595.1
 NTDB id 204 SPR RS00140 WP 074017595.1
 NTDB id 169 SP RS00155 WP 074017595.1
 NTDB id 509 SM12261 RS00130 WP 078228442.1
 NTDB id 537 SMSK321 RS07120 WP 080550752.1
 consensus



443
458
453
453
453
453
453
453

X non conserved
 X similar
 X ≥ 50% conserved