

logo

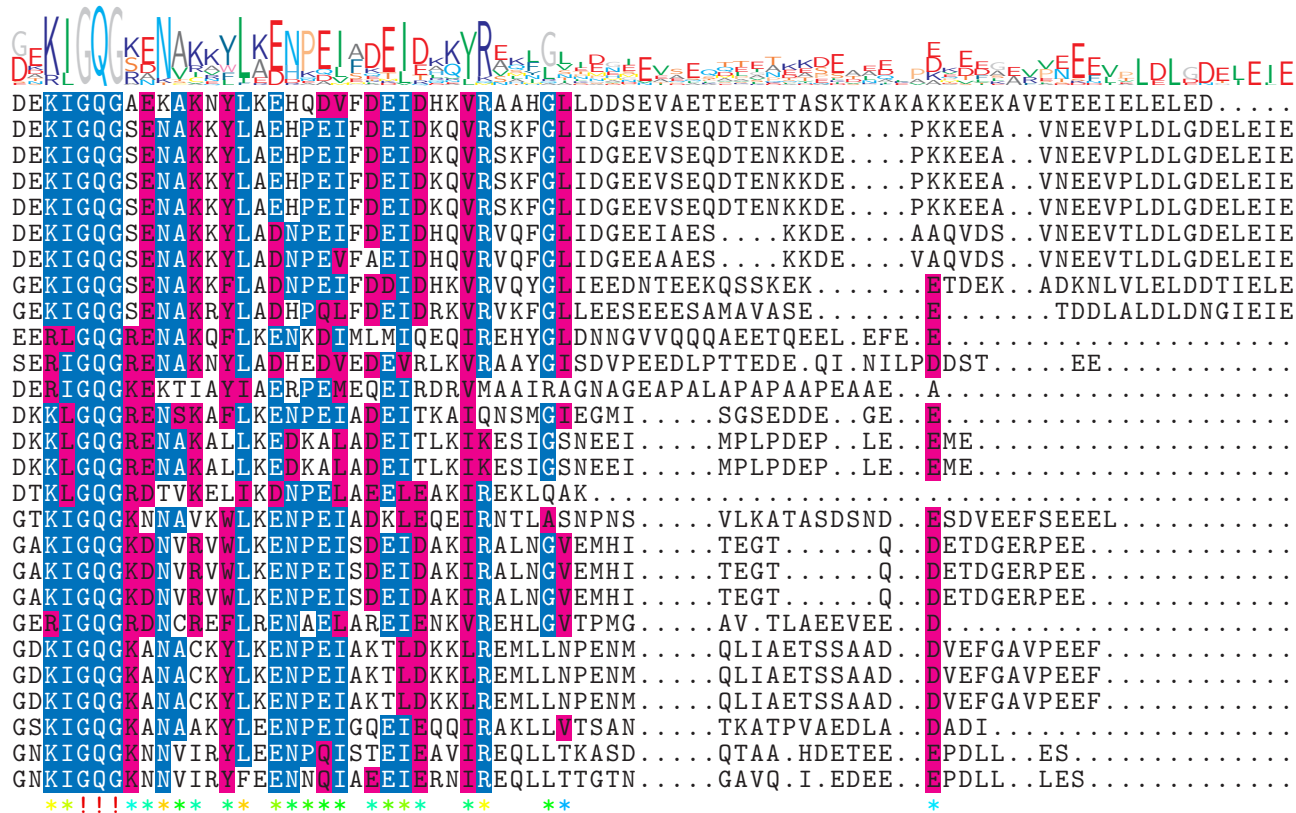


| | | |
|---|--|----|
| NTDB id 600 KW2 RS01765 WP 011675413.1 | MATKK....KTNFDDITKKYGAERDKALADALALIEKD FGKGSIMRLGER.ANQKVS VSSGSLALDI ALGAGGYPKGR | 74 |
| NTDB id 269 KZH43 RS08665 WP 001085462.1 | .MAKK....PKKLEEISKKFGAEREKALNDALKLI EKDFGKGSIMRLGER.AEQKVQVMSSGSLALDI ALGSGGYPKGR | 73 |
| NTDB id 228 SPD RS09265 WP 001085462.1 | .MAKK....PKKLEEISKKFGAEREKALNDALKLI EKDFGKGSIMRLGER.AEQKVQVMSSGSLALDI ALGSGGYPKGR | 73 |
| NTDB id 194 SPR RS08825 WP 001085462.1 | .MAKK....PKKLEEISKKFGAEREKALNDALKLI EKDFGKGSIMRLGER.AEQKVQVMSSGSLALDI ALGSGGYPKGR | 73 |
| NTDB id 159 SP RS09750 WP 001085462.1 | .MAKK....PKKLEEISKKFGAEREKALNDALKLI EKDFGKGSIMRLGER.AEQKVQVMSSGSLALDI ALGSGGYPKGR | 73 |
| NTDB id 499 SM12261 RS08315 WP 078228268.1 | .MAKK....PKKLDEISKKFGAEREKALNDALKLI EKDFGKGSIMRLGER.AEQKVQVMSSGSLALDI ALGSGGYPKGR | 73 |
| NTDB id 527 SMSK321 RS11065 WP 001085454.1 | .MAKK....PKKLDEISKKFGAEREKALNDALKLI EKDFGKGSIMRLGER.AEQKVQVMSSGSLALDI ALGSGGYPKGR | 73 |
| NTDB id 408 SMU RS09530 WP 002262392.1 | .MAKR....IKKTEEITKKFGDERRKALDDALKN IEKDFGKGAVMRLGER.AEQKVQVMSSGSLALDI ALGAGGYPKGR | 73 |
| NTDB id 453 Spy49 1753c ACI62003.1 | .MAKK....LKKNEEITKKFGDERRKALDDALKN IEKDFGKGAVMRLGER.AEQKVQVMSSGSLALDI ALGAGGYPKGR | 73 |
| NTDB id 115 BSU 16940 NP 389576.2 |MSDRQAALDMALKQIEKQFGKGSIMKLG EK.TDTRISTVPSGSLALDI TALGIGGYPGR | 58 |
| NTDB id 625 LCA RS02525 WP 011374196.1 |MAKDERQAALDAALKKIEKNFGKGSIMRMG EK.VDTQVSTVSSGSLALDEALGVGGYPRGR | 60 |
| NTDB id 1313 DR RS12030 WP 010888966.1 |MSKDATKEISAPTDAKERSKATETAM SQIEKAFGKGSIMKLGAE.SKLDVQVVSTGSLSLDL ALGVGGIPRGR | 72 |
| NTDB id 1245 Cj1673c YP 002345041.1 |MDNKRKSLDAALKS LDKTFGKGTILRLG DK.EVEQIDSIGTGSVGLDL ALGIGGVPKGR | 59 |
| NTDB id 1214 NCTC11637 00359 SQJ03206.1 |MAIDEDKQKATISLAIKQIDKVF GKGA LVRLGDK.QVEKIDAISTGSLGLDL ALGIGGVPKGR | 61 |
| NTDB id 1211 C694 RS00795 WP 000963128.1 |MAIDEDKQKATISLAIKQIDKVF GKGA LVRLGDK.QVEKIDSISTGSLGLDL ALGIGGVPKGR | 61 |
| NTDB id 1334 RAOC RS04870 WP 004918236.1 |MAKT..ETTSPNDDKKKALAAVLEK LDKTYGKGTVMKLG DGTVDHNIIEVIPSGSLGLDL ALGVGGYPKGR | 68 |
| NTDB id 1389 A4U84 RS07560 WP 021112712.1 | .MAENKKS SKNNTV.VKQVEPEQKKQALEAAL AQIEKQFGKGSIMKLGQT.EQLDIESVSTGSLGLDL ALGIGGLPMGR | 76 |
| NTDB id 1130 NGFG RS03960 WP 003688695.1 |MSDDKSKALAAALAQIEKSFGKGAIMKMDGSQ QEENLEVISTGSLGLDL ALGVGGLPRGR | 60 |
| NTDB id 1124 NGFG RS03960 WP 003688695.1 |MSDDKSKALAAALAQIEKSFGKGAIMKMDGSQ QEENLEVISTGSLGLDL ALGVGGLPRGR | 60 |
| NTDB id 1123 OK783 RS03845 WP 003688695.1 |MSDDKSKALAAALAQIEKSFGKGAIMKMDGSQ QEENLEVISTGSLGLDL ALGVGGLPRGR | 60 |
| NTDB id 1427 RS RS02760 WP 011000510.1 | .MEDG.....K..KAASMSAEKQKALAAAL AQIEKQFGKGSIMKMGDA.EVEPVQVVSTGSLGLD VALGVGGLPRGR | 68 |
| NTDB id 349209 EZZ25 RS01730 WP 000344154.1 |MDENKQKALAAALGQIEKQFGKGSIMRLG DN.RAMDVETISTGSLSLDI ALGAGGLPMGR | 59 |
| NTDB id 1165 A1552VC RS01565 WP 000344154.1 |MDENKQKALAAALGQIEKQFGKGSIMRLG DN.RAMDVETISTGSLSLDI ALGAGGLPMGR | 59 |
| NTDB id 1142 GTF74 RS11550 WP 000344154.1 |MDENKQKALAAALGQIEKQFGKGSIMRLG DN.RAMDVETISTGSLSLDI ALGAGGLPMGR | 59 |
| NTDB id 1205 PSJM300 05545 AFN77183.1 |MDENKQRALAAALGQIEKQFGKGAVMRMG DH.DRQAIPSI STGSLGLDI ALGIGGLPKGR | 59 |
| NTDB id 1022 ACIAD RS06390 WP 004925639.1 |MDNKS KALQAALSQIEKQFGKNTVMRLG DN.TVQAVEAVSTGSLTLDI ALGIGGLPKGR | 59 |
| NTDB id 1074 ABD1 RS10195 WP 000344167.1 |MDENKSKALQAALSQIEKQFGKNTVMRLG DN.TVQAVEAVSTGSLTLDI ALGIGGLPKGR | 59 |
| consensus | *** ** * ** *! *! *! *! *! *! *! * | |

logo

NTDB id 600 KW2 RS01765 WP 011675413.1
 NTDB id 269 KZH43 RS08665 WP 001085462.1
 NTDB id 228 SPD RS09265 WP 001085462.1
 NTDB id 194 SPR RS08825 WP 001085462.1
 NTDB id 159 SP RS09750 WP 001085462.1
 NTDB id 499 SM12261 RS08315 WP 078228268.1
 NTDB id 527 SMSK321 RS11065 WP 001085454.1
 NTDB id 408 SMU RS09530 WP 002262392.1
 NTDB id 453 Spy49 1753c ACI62003.1
 NTDB id 115 BSU 16940 NP 389576.2
 NTDB id 625 LCA RS02525 WP 011374196.1
 NTDB id 1313 DR RS12030 WP 010888966.1
 NTDB id 1245 Cj1673c YP 002345041.1
 NTDB id 1214 NCTC11637 00359 SQJ03206.1
 NTDB id 1211 C694 RS00795 WP 000963128.1
 NTDB id 1334 RAOC RS04870 WP 004918236.1
 NTDB id 1389 A4U84 RS07560 WP 021112712.1
 NTDB id 1130 NGFG RS03960 WP 003688695.1
 NTDB id 1124 NGFG RS03960 WP 003688695.1
 NTDB id 1123 OK783 RS03845 WP 003688695.1
 NTDB id 1427 RS RS02760 WP 011000510.1
 NTDB id 349209 EZZ25 RS01730 WP 000344154.1
 NTDB id 1165 A1552VC RS01565 WP 000344154.1
 NTDB id 1142 GTF74 RS11550 WP 000344154.1
 NTDB id 1205 PSJM300 05545 AFN77183.1
 NTDB id 1022 ACIAD RS06390 WP 004925639.1
 NTDB id 1074 ABD1 RS10195 WP 000344167.1

consensus



387
385
385
385
385
381
381
382
377
348
355
363
343
347
347
343
372
348
348
348
352
354
354
354
347
349
349

logo

| | | |
|---|-----|-----|
| NTDB id 600 KW2 RS01765 WP 011675413.1 | ... | 387 |
| NTDB id 269 KZH43 RS08665 WP 001085462.1 | IEE | 388 |
| NTDB id 228 SPD RS09265 WP 001085462.1 | IEE | 388 |
| NTDB id 194 SPR RS08825 WP 001085462.1 | IEE | 388 |
| NTDB id 159 SP RS09750 WP 001085462.1 | IEE | 388 |
| NTDB id 499 SM12261 RS08315 WP 078228268.1 | IEE | 384 |
| NTDB id 527 SMSK321 RS11065 WP 001085454.1 | IEE | 384 |
| NTDB id 408 SMU RS09530 WP 002262392.1 | D.. | 383 |
| NTDB id 453 Spy49 1753c ACI62003.1 | D.. | 378 |
| NTDB id 115 BSU 16940 NP 389576.2 | ... | 348 |
| NTDB id 625 LCA RS02525 WP 011374196.1 | ... | 355 |
| NTDB id 1313 DR RS12030 WP 010888966.1 | ... | 363 |
| NTDB id 1245 Cj1673c YP 002345041.1 | ... | 343 |
| NTDB id 1214 NCTC11637 00359 SQJ03206.1 | ... | 347 |
| NTDB id 1211 C694 RS00795 WP 000963128.1 | ... | 347 |
| NTDB id 1334 RAOC RS04870 WP 004918236.1 | ... | 343 |
| NTDB id 1389 A4U84 RS07560 WP 021112712.1 | ... | 372 |
| NTDB id 1130 NGFG RS03960 WP 003688695.1 | ... | 348 |
| NTDB id 1124 NGFG RS03960 WP 003688695.1 | ... | 348 |
| NTDB id 1123 OK783 RS03845 WP 003688695.1 | ... | 348 |
| NTDB id 1427 RS RS02760 WP 011000510.1 | ... | 352 |
| NTDB id 349209 EZZ25 RS01730 WP 000344154.1 | ... | 354 |
| NTDB id 1165 A1552VC RS01565 WP 000344154.1 | ... | 354 |
| NTDB id 1142 GTF74 RS11550 WP 000344154.1 | ... | 354 |
| NTDB id 1205 PSJM300 05545 AFN77183.1 | ... | 347 |
| NTDB id 1022 ACIAD RS06390 WP 004925639.1 | ... | 349 |
| NTDB id 1074 ABD1 RS10195 WP 000344167.1 | ... | 349 |

consensus

 non conserved
 similar
 ≥ 50% conserved