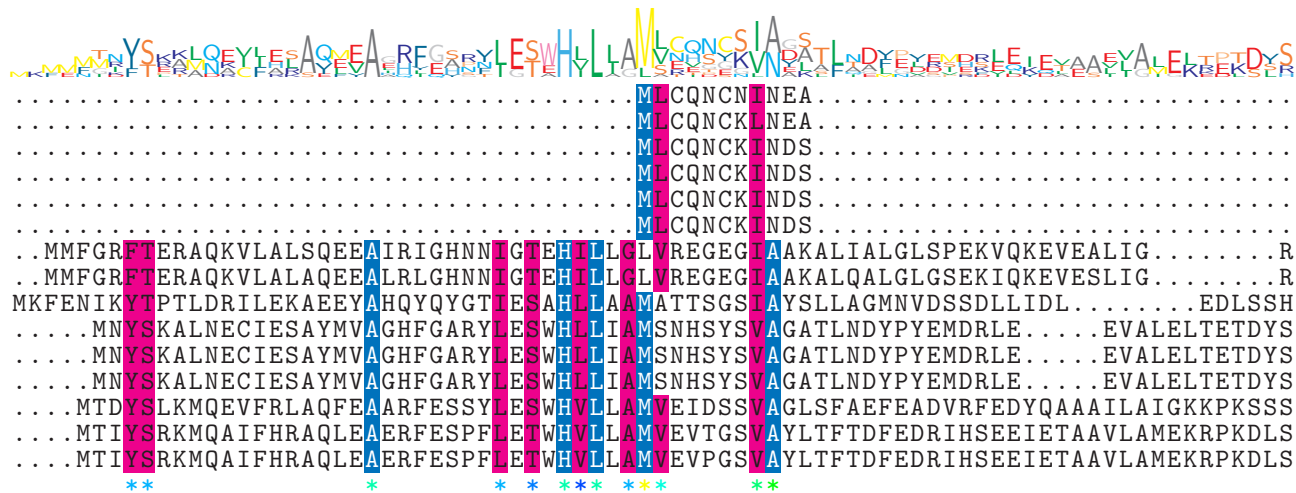


logo

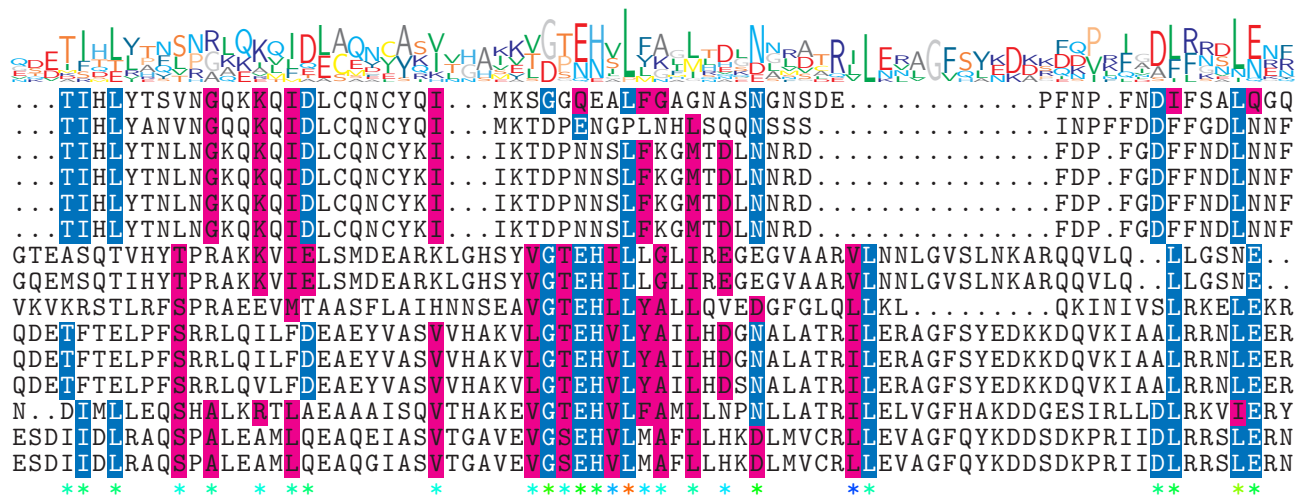
NTDB id 601 KW2 RS02615 WP 021036805.1
 NTDB id 378 SMU RS02690 WP 002263569.1
 NTDB id 241 SP RS04015 WP 000882523.1
 NTDB id 281 KZH43 RS03550 WP 000882517.1
 NTDB id 245 SPD RS03860 WP 000882517.1
 NTDB id 243 SPR RS03635 WP 000882517.1
 NTDB id 346859 EXW25 RS00525 WP 000971171.1
 NTDB id 85 BSU 00860 NP 387967.1
 NTDB id 610 V4T04 RS10165 WP 012897346.1
 NTDB id 290 KZH43 RS10025 WP 001109677.1
 NTDB id 289 SPD RS10700 WP 001109677.1
 NTDB id 287 SP RS11210 WP 001109712.1
 NTDB id 377 SMU RS09275 WP 002262344.1
 NTDB id 297 STER RS00545 WP 011680614.1
 NTDB id 329 STU RS10020 WP 011225298.1



consensus

logo

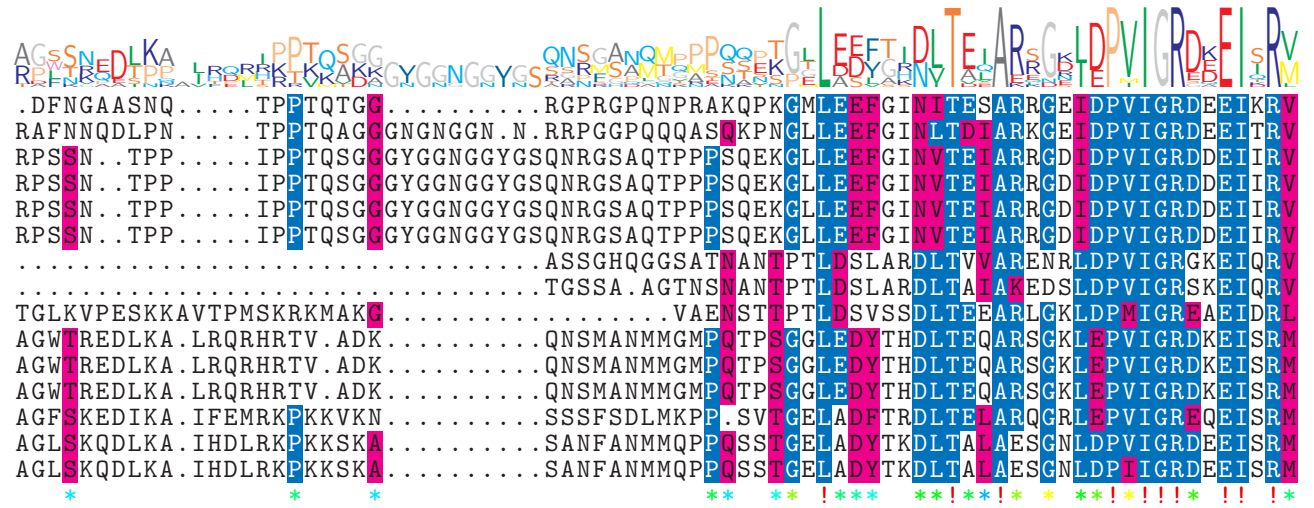
NTDB id 601 KW2 RS02615 WP 021036805.1
 NTDB id 378 SMU RS02690 WP 002263569.1
 NTDB id 241 SP RS04015 WP 000882523.1
 NTDB id 281 KZH43 RS03550 WP 000882517.1
 NTDB id 245 SPD RS03860 WP 000882517.1
 NTDB id 243 SPR RS03635 WP 000882517.1
 NTDB id 346859 EXW25 RS00525 WP 000971171.1
 NTDB id 85 BSU 00860 NP 387967.1
 NTDB id 610 V4T04 RS10165 WP 012897346.1
 NTDB id 290 KZH43 RS10025 WP 001109677.1
 NTDB id 289 SPD RS10700 WP 001109677.1
 NTDB id 287 SP RS11210 WP 001109712.1
 NTDB id 377 SMU RS09275 WP 002262344.1
 NTDB id 297 STER RS00545 WP 011680614.1
 NTDB id 329 STU RS10020 WP 011225298.1



consensus

logo

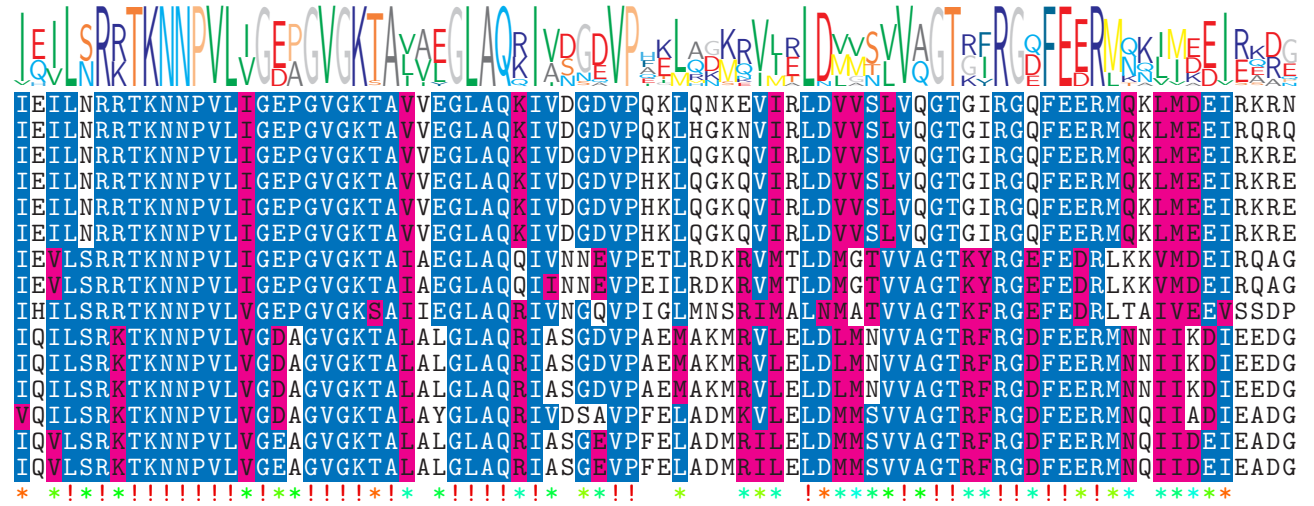
NTDB id 601 KW2 RS02615 WP 021036805.1
 NTDB id 378 SMU RS02690 WP 002263569.1
 NTDB id 241 SP RS04015 WP 000882523.1
 NTDB id 281 KZH43 RS03550 WP 000882517.1
 NTDB id 245 SPD RS03860 WP 000882517.1
 NTDB id 243 SPR RS03635 WP 000882517.1
 NTDB id 346859 EXW25 RS00525 WP 000971171.1
 NTDB id 85 BSU 00860 NP 387967.1
 NTDB id 610 V4T04 RS10165 WP 012897346.1
 NTDB id 290 KZH43 RS10025 WP 001109677.1
 NTDB id 289 SPD RS10700 WP 001109677.1
 NTDB id 287 SP RS11210 WP 001109712.1
 NTDB id 377 SMU RS09275 WP 002262344.1
 NTDB id 297 STER RS00545 WP 011680614.1
 NTDB id 329 STU RS10020 WP 011225298.1
 consensus



136
143
142
142
142
142
193
192
205
218
218
218
222
225
225

logo

NTDB id 601 KW2 RS02615 WP 021036805.1
 NTDB id 378 SMU RS02690 WP 002263569.1
 NTDB id 241 SP RS04015 WP 000882523.1
 NTDB id 281 KZH43 RS03550 WP 000882517.1
 NTDB id 245 SPD RS03860 WP 000882517.1
 NTDB id 243 SPR RS03635 WP 000882517.1
 NTDB id 346859 EXW25 RS00525 WP 000971171.1
 NTDB id 85 BSU 00860 NP 387967.1
 NTDB id 610 V4T04 RS10165 WP 012897346.1
 NTDB id 290 KZH43 RS10025 WP 001109677.1
 NTDB id 289 SPD RS10700 WP 001109677.1
 NTDB id 287 SP RS11210 WP 001109712.1
 NTDB id 377 SMU RS09275 WP 002262344.1
 NTDB id 297 STER RS00545 WP 011680614.1
 NTDB id 329 STU RS10020 WP 011225298.1
 consensus



216
223
222
222
222
222
273
272
285
298
298
298
302
305
305

logo

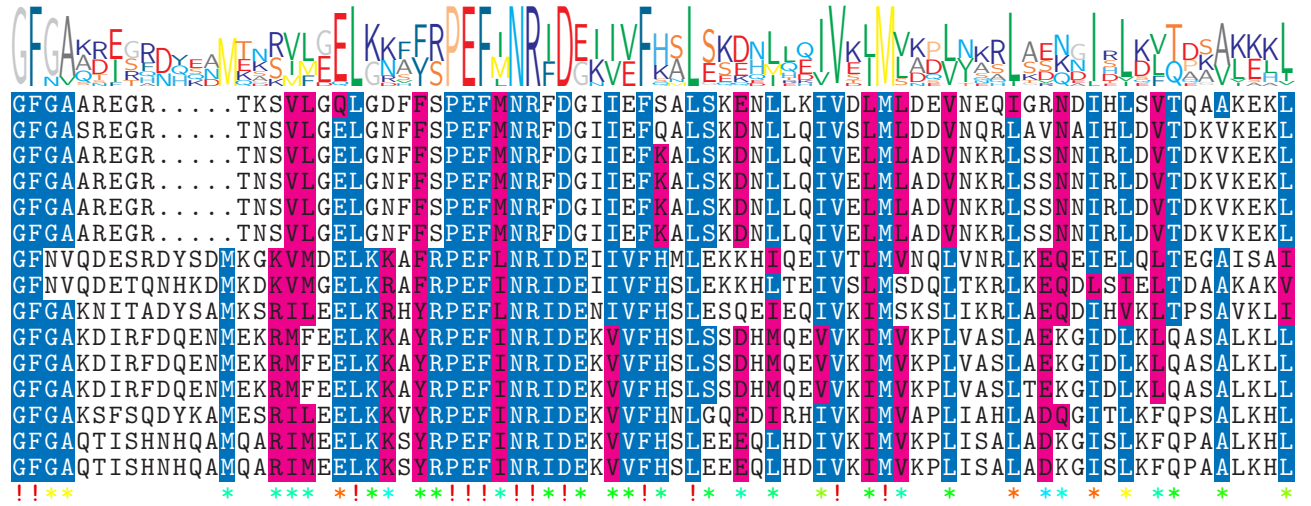
NTDB id 601 KW2 RS02615 WP 021036805.1
 NTDB id 378 SMU RS02690 WP 002263569.1
 NTDB id 241 SP RS04015 WP 000882523.1
 NTDB id 281 KZH43 RS03550 WP 000882517.1
 NTDB id 245 SPD RS03860 WP 000882517.1
 NTDB id 243 SPR RS03635 WP 000882517.1
 NTDB id 346859 EXW25 RS00525 WP 000971171.1
 NTDB id 85 BSU 00860 NP 387967.1
 NTDB id 610 V4T04 RS10165 WP 012897346.1
 NTDB id 290 KZH43 RS10025 WP 001109677.1
 NTDB id 289 SPD RS10700 WP 001109677.1
 NTDB id 287 SP RS11210 WP 001109712.1
 NTDB id 377 SMU RS09275 WP 002262344.1
 NTDB id 297 STER RS00545 WP 011680614.1
 NTDB id 329 STU RS10020 WP 011225298.1
 consensus



605
612
611
611
611
611
672
671
680
675
675
675
678
681
681

logo

NTDB id 601 KW2 RS02615 WP 021036805.1
 NTDB id 378 SMU RS02690 WP 002263569.1
 NTDB id 241 SP RS04015 WP 000882523.1
 NTDB id 281 KZH43 RS03550 WP 000882517.1
 NTDB id 245 SPD RS03860 WP 000882517.1
 NTDB id 243 SPR RS03635 WP 000882517.1
 NTDB id 346859 EXW25 RS00525 WP 000971171.1
 NTDB id 85 BSU 00860 NP 387967.1
 NTDB id 610 V4T04 RS10165 WP 012897346.1
 NTDB id 290 KZH43 RS10025 WP 001109677.1
 NTDB id 289 SPD RS10700 WP 001109677.1
 NTDB id 287 SP RS11210 WP 001109712.1
 NTDB id 377 SMU RS09275 WP 002262344.1
 NTDB id 297 STER RS00545 WP 011680614.1
 NTDB id 329 STU RS10020 WP 011225298.1
 consensus



680
687
686
686
686
686
752
751
760
755
755
755
758
761
761

logo



NTDB id 601 KW2 RS02615 WP 021036805.1	VDLGYNPAMGARPLRRTIQENIEDSTADFYIEHPEYKQLV.ADLIDDKIVISNQTQETAETTTDEEVPAAE	748
NTDB id 378 SMU RS02690 WP 002263569.1	VDLGYDPKMGARPLRRTIQEHIEDAITDFYLEHPEQKELK.AIMTSNGKIVIKASNK.VETVTKATSD.	753
NTDB id 241 SP RS04015 WP 000882523.1	VDLGYDPKMGARPLRRTIQDYIEDTITDYYLENPSEKDLK.AVMTSKGNIQIKSACK.AEVKSSEKEK.	752
NTDB id 281 KZH43 RS03550 WP 000882517.1	VDLGYDPKMGARPLRRTIQDYIEDTITDYYLENPSEKDLK.AVMTSKGNIQIKSACK.AEVKSSEKEK.	752
NTDB id 245 SPD RS03860 WP 000882517.1	VDLGYDPKMGARPLRRTIQDYIEDTITDYYLENPSEKDLK.AVMTSKGNIQIKSACK.AEVKSSEKEK.	752
NTDB id 243 SPR RS03635 WP 000882517.1	VDLGYDPKMGARPLRRTIQDYIEDTITDYYLENPSEKDLK.AVMTSKGNIQIKSACK.AEVKSSEKEK.	752
NTDB id 346859 EXW25 RS00525 WP 000971171.1	ADKGFDRREYGARPLRRAIQKHVEDRLSEELLKGAIEKGGKVIIFDVEGESFVIHSAEKVK.....	811
NTDB id 85 BSU 00860 NP 387967.1	AEEGVLDLEYGARPLRRAIQKHVEDRLSEELLRGNIHKGQHIVLDVEDGEFVVKTTAKTN.....	810
NTDB id 610 V4T04 RS10165 WP 012897346.1	AEEVGFDPPEYGARPLRKALQKEVEDLLSEQLLSGETKAGNHVSIIGASNKKTIAQIV.....	816
NTDB id 290 KZH43 RS10025 WP 001109677.1	ANQGYDPEMGARPLRRTLQTEVEDKLAELLLKGDLVAGSILKIGVKAGQLKFDIA.....	810
NTDB id 289 SPD RS10700 WP 001109677.1	ANQGYDPEMGARPLRRTLQTEVEDKLAELLLKGDLVAGSILKIGVKAGQLKFDIA.....	810
NTDB id 287 SP RS11210 WP 001109712.1	ANQGYDPEMGARPLRRTLQTEVEDKLAELLLKGDLVAGSTLKIIGVKAGQLKFDIA.....	810
NTDB id 377 SMU RS09275 WP 002262344.1	ALAGYDAEMGARPLRRTLQTEVEDKLAELILSGKLASGQTLLKIGIQKEKIKFDIV.....	813
NTDB id 297 STER RS00545 WP 011680614.1	AKDGYDIEMGARPLRRTIQTQVEDKLSSELLGGQVVSQTLLKIGCSKDKLTFTVV.....	816
NTDB id 329 STU RS10020 WP 011225298.1	AKDGYDIEMGARPLRRTIQTQVEDKLSSELLGGQVVSQTLLKIGCSKDKLTFTVV.....	816
consensus	** !*****!!!!** *!! *** ** * * * * * * * * * * * *	

- X non conserved
- X similar
- X ≥ 50% conserved