

logo

NTDB id 345994 EXW49 RS21450 WP 002015289.1
NTDB id 355 BSU 27480 NP 390625.1
consensus



80
79

logo

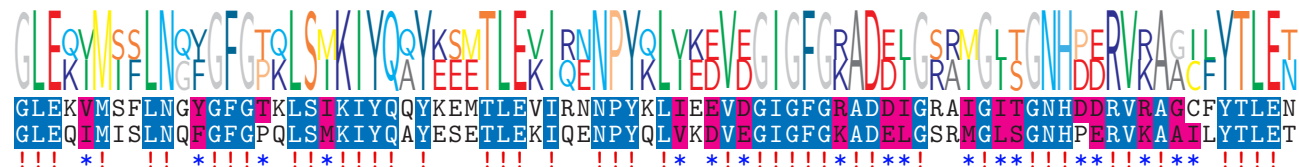
NTDB id 345994 EXW49 RS21450 WP 002015289.1
NTDB id 355 BSU 27480 NP 390625.1
consensus



158
159

logo

NTDB id 345994 EXW49 RS21450 WP 002015289.1
NTDB id 355 BSU 27480 NP 390625.1
consensus



238
239

logo

NTDB id 345994 EXW49 RS21450 WP 002015289.1
NTDB id 355 BSU 27480 NP 390625.1
consensus



315
319

logo

NTDB id 345994 EXW49 RS21450 WP 002015289.1
NTDB id 355 BSU 27480 NP 390625.1
consensus



394
399

logo

NTDB id 345994 EXW49 RS21450 WP 002015289.1
NTDB id 355 BSU 27480 NP 390625.1
consensus



474
479

logo

NTDB id 345994 EXW49 RS21450 WP 002015289.1
NTDB id 355 BSU 27480 NP 390625.1
consensus



554
559

logo

NTDB id 345994 EXW49 RS21450 WP 002015289.1
NTDB id 355 BSU 27480 NP 390625.1
consensus



634
639

logo

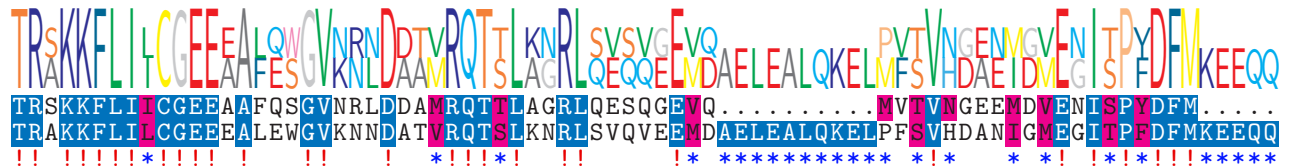
NTDB id 345994 EXW49 RS21450 WP 002015289.1
NTDB id 355 BSU 27480 NP 390625.1
consensus



714
719

logo

NTDB id 345994 EXW49 RS21450 WP 002015289.1
NTDB id 355 BSU 27480 NP 390625.1
consensus



778
798

non conserved
 similar
 ≥ 50% conserved