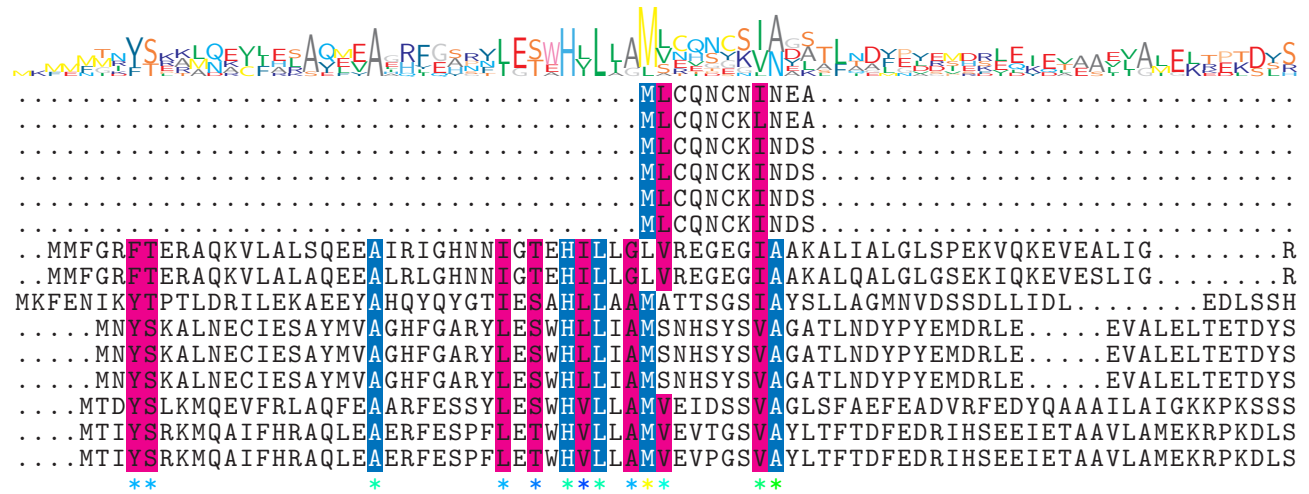


logo

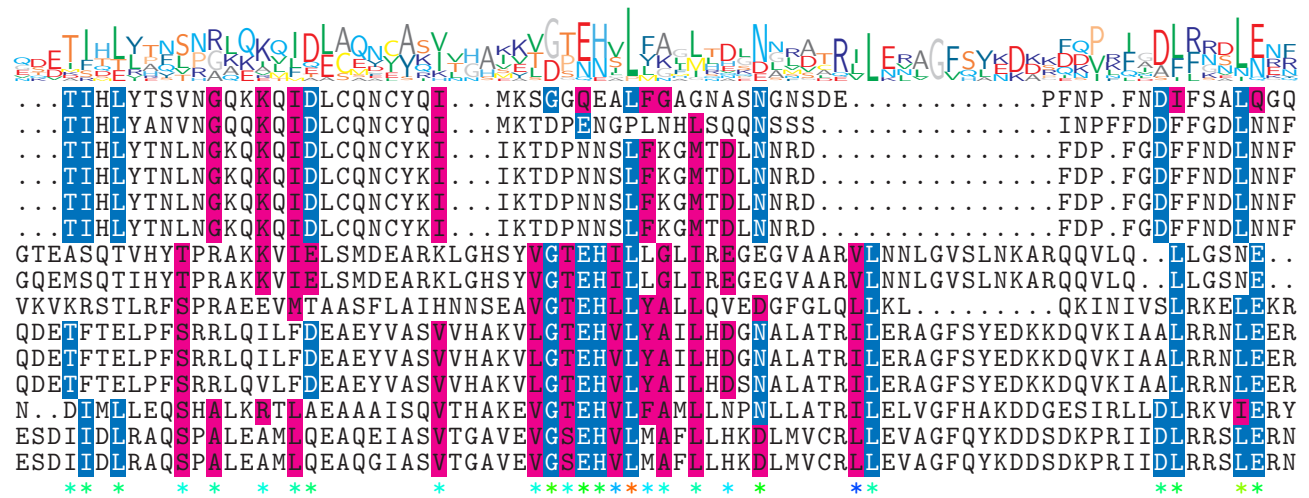
NTDB id 601 KW2 RS02615 WP 021036805.1  
NTDB id 378 SMU RS02690 WP 002263569.1  
NTDB id 241 SP RS04015 WP 000882523.1  
NTDB id 281 KZH43 RS03550 WP 000882517.1  
NTDB id 245 SPD RS03860 WP 000882517.1  
NTDB id 243 SPR RS03635 WP 000882517.1  
NTDB id 345604 EXW32 RS00525 WP 002063405.1  
NTDB id 85 BSU 00860 NP 387967.1  
NTDB id 610 V4T04 RS10165 WP 012897346.1  
NTDB id 290 KZH43 RS10025 WP 001109677.1  
NTDB id 289 SPD RS10700 WP 001109677.1  
NTDB id 287 SP RS11210 WP 001109712.1  
NTDB id 377 SMU RS09275 WP 002262344.1  
NTDB id 297 STER RS00545 WP 011680614.1  
NTDB id 329 STU RS10020 WP 011225298.1



11  
11  
11  
11  
11  
11  
11  
70  
70  
72  
70  
70  
70  
76  
76  
76

logo

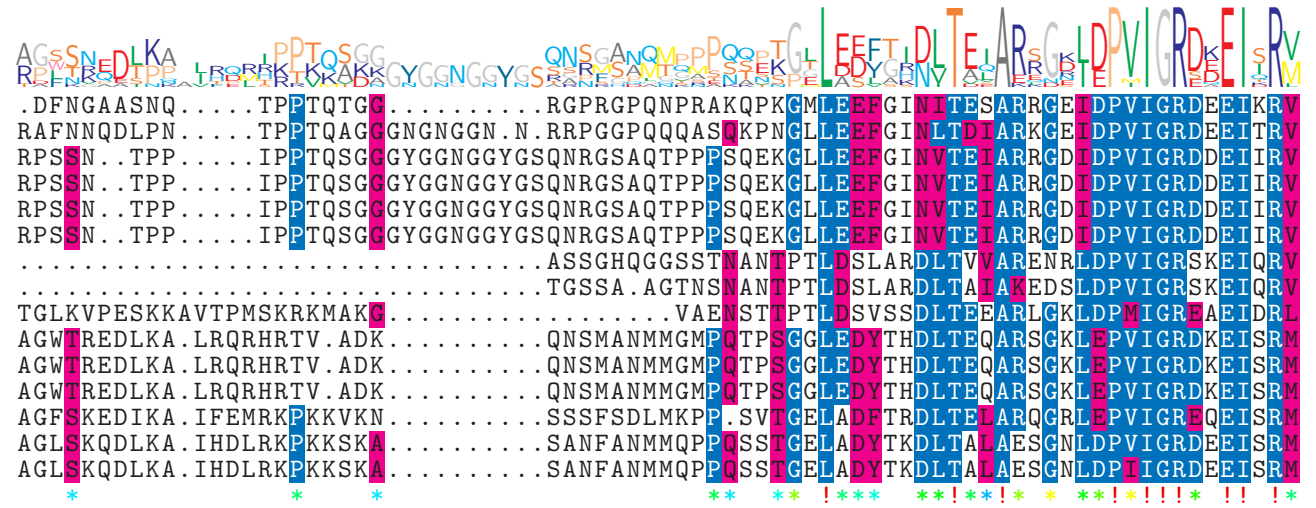
NTDB id 601 KW2 RS02615 WP 021036805.1  
NTDB id 378 SMU RS02690 WP 002263569.1  
NTDB id 241 SP RS04015 WP 000882523.1  
NTDB id 281 KZH43 RS03550 WP 000882517.1  
NTDB id 245 SPD RS03860 WP 000882517.1  
NTDB id 243 SPR RS03635 WP 000882517.1  
NTDB id 345604 EXW32 RS00525 WP 002063405.1  
NTDB id 85 BSU 00860 NP 387967.1  
NTDB id 610 V4T04 RS10165 WP 012897346.1  
NTDB id 290 KZH43 RS10025 WP 001109677.1  
NTDB id 289 SPD RS10700 WP 001109677.1  
NTDB id 287 SP RS11210 WP 001109712.1  
NTDB id 377 SMU RS09275 WP 002262344.1  
NTDB id 297 STER RS00545 WP 011680614.1  
NTDB id 329 STU RS10020 WP 011225298.1



72  
70  
69  
69  
69  
69  
146  
146  
143  
150  
150  
150  
154  
156  
156

logo

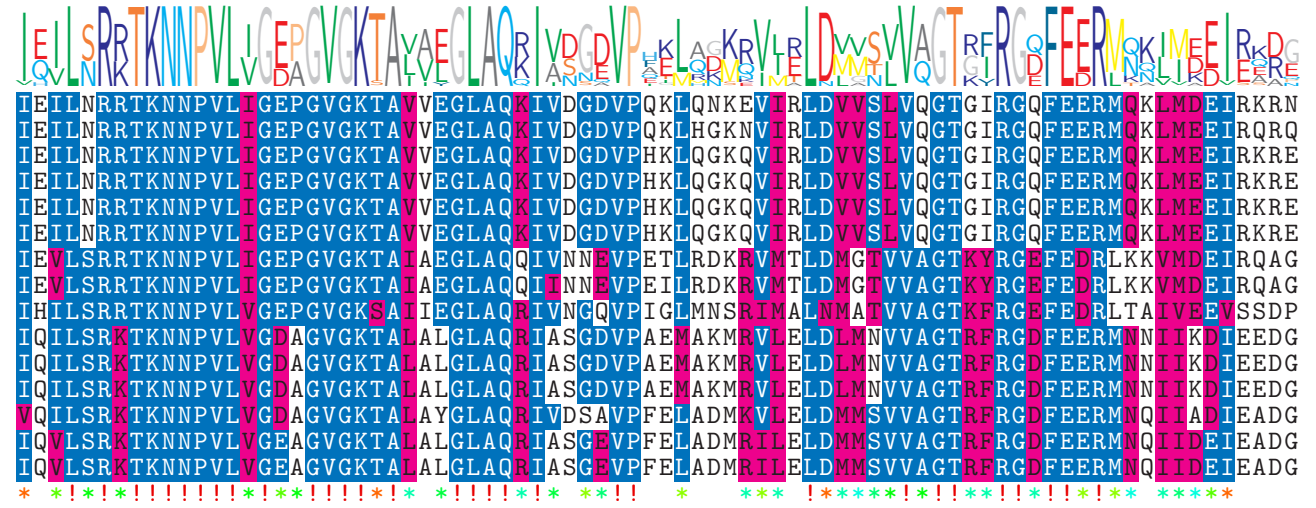
NTDB id 601 KW2 RS02615 WP 021036805.1  
 NTDB id 378 SMU RS02690 WP 002263569.1  
 NTDB id 241 SP RS04015 WP 000882523.1  
 NTDB id 281 KZH43 RS03550 WP 000882517.1  
 NTDB id 245 SPD RS03860 WP 000882517.1  
 NTDB id 243 SPR RS03635 WP 000882517.1  
 NTDB id 345604 EXW32 RS00525 WP 002063405.1  
 NTDB id 85 BSU 00860 NP 387967.1  
 NTDB id 610 V4T04 RS10165 WP 012897346.1  
 NTDB id 290 KZH43 RS10025 WP 001109677.1  
 NTDB id 289 SPD RS10700 WP 001109677.1  
 NTDB id 287 SP RS11210 WP 001109712.1  
 NTDB id 377 SMU RS09275 WP 002262344.1  
 NTDB id 297 STER RS00545 WP 011680614.1  
 NTDB id 329 STU RS10020 WP 011225298.1  
 consensus



136  
143  
142  
142  
142  
142  
193  
192  
205  
218  
218  
218  
222  
225  
225

logo

NTDB id 601 KW2 RS02615 WP 021036805.1  
 NTDB id 378 SMU RS02690 WP 002263569.1  
 NTDB id 241 SP RS04015 WP 000882523.1  
 NTDB id 281 KZH43 RS03550 WP 000882517.1  
 NTDB id 245 SPD RS03860 WP 000882517.1  
 NTDB id 243 SPR RS03635 WP 000882517.1  
 NTDB id 345604 EXW32 RS00525 WP 002063405.1  
 NTDB id 85 BSU 00860 NP 387967.1  
 NTDB id 610 V4T04 RS10165 WP 012897346.1  
 NTDB id 290 KZH43 RS10025 WP 001109677.1  
 NTDB id 289 SPD RS10700 WP 001109677.1  
 NTDB id 287 SP RS11210 WP 001109712.1  
 NTDB id 377 SMU RS09275 WP 002262344.1  
 NTDB id 297 STER RS00545 WP 011680614.1  
 NTDB id 329 STU RS10020 WP 011225298.1  
 consensus



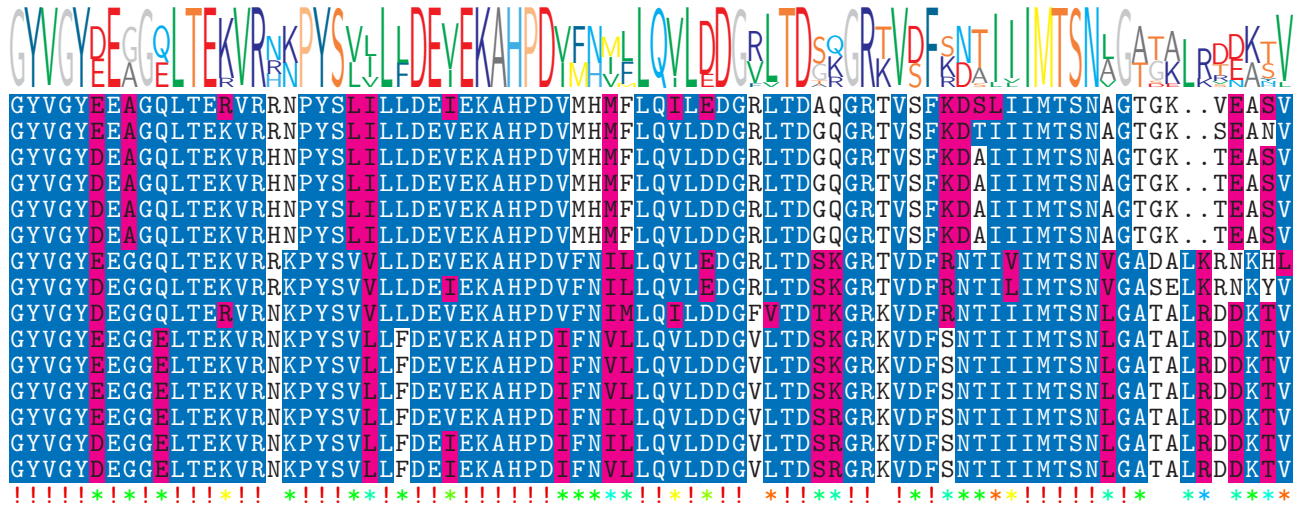
216  
223  
222  
222  
222  
222  
273  
272  
285  
298  
298  
298  
302  
305  
305





logo

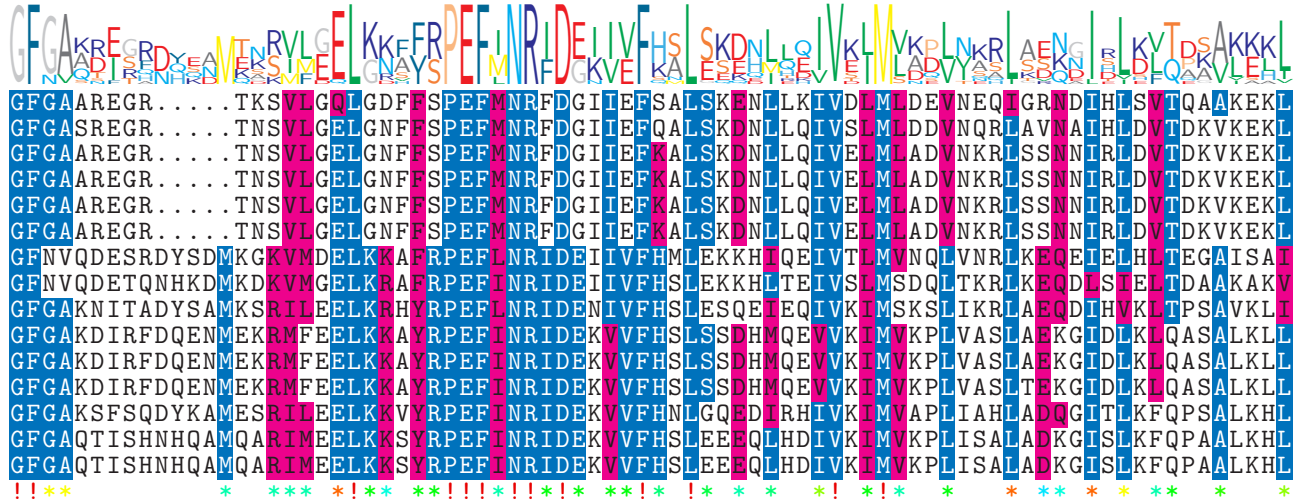
NTDB id 601 KW2 RS02615 WP 021036805.1  
NTDB id 378 SMU RS02690 WP 002263569.1  
NTDB id 241 SP RS04015 WP 000882523.1  
NTDB id 281 KZH43 RS03550 WP 000882517.1  
NTDB id 245 SPD RS03860 WP 000882517.1  
NTDB id 243 SPR RS03635 WP 000882517.1  
NTDB id 345604 EXW32 RS00525 WP 002063405.1  
NTDB id 85 BSU 00860 NP 387967.1  
NTDB id 610 V4T04 RS10165 WP 012897346.1  
NTDB id 290 KZH43 RS10025 WP 001109677.1  
NTDB id 289 SPD RS10700 WP 001109677.1  
NTDB id 287 SP RS11210 WP 001109712.1  
NTDB id 377 SMU RS09275 WP 002262344.1  
NTDB id 297 STER RS00545 WP 011680614.1  
NTDB id 329 STU RS10020 WP 011225298.1  
consensus



605  
612  
611  
611  
611  
611  
611  
672  
671  
680  
675  
675  
675  
678  
681  
681

logo

NTDB id 601 KW2 RS02615 WP 021036805.1  
NTDB id 378 SMU RS02690 WP 002263569.1  
NTDB id 241 SP RS04015 WP 000882523.1  
NTDB id 281 KZH43 RS03550 WP 000882517.1  
NTDB id 245 SPD RS03860 WP 000882517.1  
NTDB id 243 SPR RS03635 WP 000882517.1  
NTDB id 345604 EXW32 RS00525 WP 002063405.1  
NTDB id 85 BSU 00860 NP 387967.1  
NTDB id 610 V4T04 RS10165 WP 012897346.1  
NTDB id 290 KZH43 RS10025 WP 001109677.1  
NTDB id 289 SPD RS10700 WP 001109677.1  
NTDB id 287 SP RS11210 WP 001109712.1  
NTDB id 377 SMU RS09275 WP 002262344.1  
NTDB id 297 STER RS00545 WP 011680614.1  
NTDB id 329 STU RS10020 WP 011225298.1  
consensus



680  
687  
686  
686  
686  
686  
752  
751  
760  
755  
755  
755  
758  
761  
761

logo



NTDB id 601 KW2 RS02615 WP 021036805.1	VDLGYNPAMGARPLRRTIQENIEDSTADFYIEHPEYKQLV.ADLIDDKIVISNQTQETAETTDDEEVPAAE	748
NTDB id 378 SMU RS02690 WP 002263569.1	VDLGYDPKMGARPLRRTIQEHIEDAITDFYLEHPEQKELK.AIMTSNGKIVIKASNK.VETVTKATSD.	753
NTDB id 241 SP RS04015 WP 000882523.1	VDLGYDPKMGARPLRRTIQDYIEDTITDYYLENPSEKDLK.AVMTSKGNIQIKSACK.AEVKSSEKEK.	752
NTDB id 281 KZH43 RS03550 WP 000882517.1	VDLGYDPKMGARPLRRTIQDYIEDTITDYYLENPSEKDLK.AVMTSKGNIQIKSACK.AEVKSSEKEK.	752
NTDB id 245 SPD RS03860 WP 000882517.1	VDLGYDPKMGARPLRRTIQDYIEDTITDYYLENPSEKDLK.AVMTSKGNIQIKSACK.AEVKSSEKEK.	752
NTDB id 243 SPR RS03635 WP 000882517.1	VDLGYDPKMGARPLRRTIQDYIEDTITDYYLENPSEKDLK.AVMTSKGNIQIKSACK.AEVKSSEKEK.	752
NTDB id 345604 EXW32 RS00525 WP 002063405.1	ADKGFDRREYGARPLRRAIQKHVEDRLSEELLKGAIEKGGKVIIFDIEGESFVIHSAEKVK.....	811
NTDB id 85 BSU 00860 NP 387967.1	AEEGVLDLEYGARPLRRAIQKHVEDRLSEELLRGNTHKGGHIVLDVEDGEFVVKTTAKTN.....	810
NTDB id 610 V4T04 RS10165 WP 012897346.1	AEEVGFDPPEYGARPLRKALQKEVEDLLSEQLLSGETKAGNHVSI GASNKKTKIAQIV.....	816
NTDB id 290 KZH43 RS10025 WP 001109677.1	ANQGYDPEMGARPLRRTLQTEVEDKLAELLLKGDLVAGSILKIGVKAGQLKFDIA.....	810
NTDB id 289 SPD RS10700 WP 001109677.1	ANQGYDPEMGARPLRRTLQTEVEDKLAELLLKGDLVAGSILKIGVKAGQLKFDIA.....	810
NTDB id 287 SP RS11210 WP 001109712.1	ANQGYDPEMGARPLRRTLQTEVEDKLAELLLKGDLVAGSTLKIIGVKAGQLKFDIA.....	810
NTDB id 377 SMU RS09275 WP 002262344.1	ALAGYDAEMGARPLRRTLQTEVEDKLAELILSGKLASGQTLLKIGIQKEKIKFDIV.....	813
NTDB id 297 STER RS00545 WP 011680614.1	AKDGYDIEMGARPLRRTIQTQVEDKLSSELLGGQVVSQTLLKIGCSKDKLTFTVV.....	816
NTDB id 329 STU RS10020 WP 011225298.1	AKDGYDIEMGARPLRRTIQTQVEDKLSSELLGGQVVSQTLLKIGCSKDKLTFTVV.....	816
consensus	** !*****!!!!** *!! *** ** * * * * * * * * * *	

- non conserved
- similar
- ≥ 50% conserved