

logo

NTDB id 340397 ETA57 RS07055 WP 281510530.1
NTDB id 480 HSISS4 RS02090 WP 002890133.1
consensus



80
72

logo

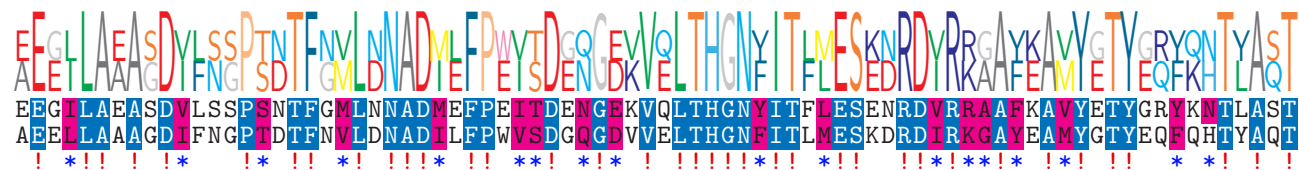
NTDB id 340397 ETA57 RS07055 WP 281510530.1
NTDB id 480 HSISS4 RS02090 WP 002890133.1
consensus



160
152

logo

NTDB id 340397 ETA57 RS07055 WP 281510530.1
NTDB id 480 HSISS4 RS02090 WP 002890133.1
consensus



240
232

logo

NTDB id 340397 ETA57 RS07055 WP 281510530.1
NTDB id 480 HSISS4 RS02090 WP 002890133.1
consensus



320
311

logo

NTDB id 340397 ETA57 RS07055 WP 281510530.1
NTDB id 480 HSISS4 RS02090 WP 002890133.1
consensus



400
391

logo

NTDB id 340397 ETA57 RS07055 WP 281510530.1
NTDB id 480 HSISS4 RS02090 WP 002890133.1
consensus



480
471

logo

NTDB id 340397 ETA57 RS07055 WP 281510530.1
NTDB id 480 HSISS4 RS02090 WP 002890133.1
consensus



560
551

logo

NTDB id 340397 ETA57 RS07055 WP 281510530.1

NTDB id 480 HSISS4 RS02090 WP 002890133.1

consensus



609

601

- non conserved
- similar
- $\geq 50\%$ conserved