

logo

NTDB id 331518 EJN90 RS10600 WP 126111055.1  
NTDB id 480 HSISS4 RS02090 WP 002890133.1  
consensus



80  
75

logo

NTDB id 331518 EJN90 RS10600 WP 126111055.1  
NTDB id 480 HSISS4 RS02090 WP 002890133.1  
consensus



160  
155

logo

NTDB id 331518 EJN90 RS10600 WP 126111055.1  
NTDB id 480 HSISS4 RS02090 WP 002890133.1  
consensus



240  
235

logo

NTDB id 331518 EJN90 RS10600 WP 126111055.1  
NTDB id 480 HSISS4 RS02090 WP 002890133.1  
consensus



320  
314

logo

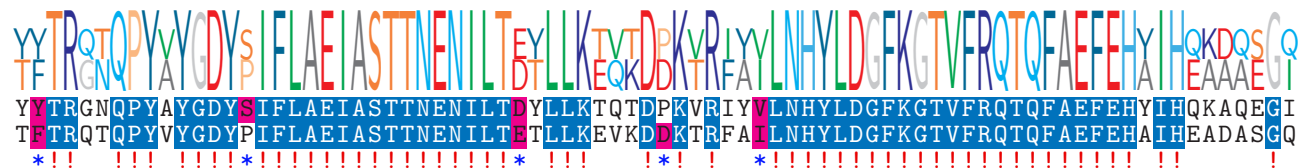
NTDB id 331518 EJN90 RS10600 WP 126111055.1  
NTDB id 480 HSISS4 RS02090 WP 002890133.1  
consensus



400  
394

logo

NTDB id 331518 EJN90 RS10600 WP 126111055.1  
NTDB id 480 HSISS4 RS02090 WP 002890133.1  
consensus



480  
474

logo

NTDB id 331518 EJN90 RS10600 WP 126111055.1  
NTDB id 480 HSISS4 RS02090 WP 002890133.1  
consensus



560  
554

logo

NTDB id 331518 EJM90 RS10600 WP 126111055.1

NTDB id 480 HSISS4 RS02090 WP 002890133.1

consensus



603

601

- non conserved
- similar
- ≥ 50% conserved