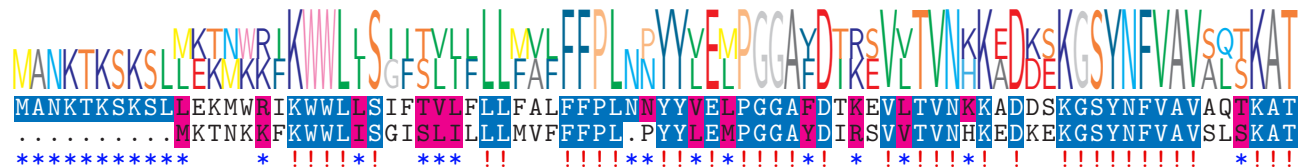


logo

NTDB id 312351 D1036 RS08095 WP 022096499.1
NTDB id 360 SMU RS02495 WP 002262039.1
consensus



80
69

logo

NTDB id 312351 D1036 RS08095 WP 022096499.1
NTDB id 360 SMU RS02495 WP 002262039.1
consensus



160
149

logo

NTDB id 312351 D1036 RS08095 WP 022096499.1
NTDB id 360 SMU RS02495 WP 002262039.1
consensus



240
229

logo

NTDB id 312351 D1036 RS08095 WP 022096499.1
NTDB id 360 SMU RS02495 WP 002262039.1
consensus



320
309

logo

NTDB id 312351 D1036 RS08095 WP 022096499.1
NTDB id 360 SMU RS02495 WP 002262039.1
consensus



358
346

non conserved
 similar
 ≥ 50% conserved