

logo

NTDB id 1306 DR RS10060 WP 027479822.1	MSXLRIGDRRLGAILLDQGYLGDNDLQRALERHSEVGGRLADVLIDSGMVGEKRIARAIEEALGIPLVNLAVQPDPAAL	79
NTDB id 1028 TT RS08215 WP 011173991.1	MSVLTIGDKRLGAALLDAGLLTDEELQRALERHREVGGSLAEVLVDMGLLSERRIAQTIEDRFGIPLVELHRVEIPPKVK	80
NTDB id 1384 A4U84 RS08525 WP 010787006.1	.....	0
NTDB id 304923 DV378 RS05020 WP 005691826.1	.....	0
NTDB id 1355 HI 0298 AAC21962.1	.....	0
NTDB id 1366 NTHI RS01950 WP 011271972.1	.....	0
NTDB id 1168 A1552VC RS11070 WP 000957200.1	.....	0
NTDB id 1401 DSB67 RS12665 WP 010643259.1	.....	0
NTDB id 1293 VP RS12240 WP 005479695.1	.....	0
NTDB id 1110 NGFG RS09235 WP 003689817.1	.....	0
NTDB id 1251 GC085 RS07725 WP 011946523.1	.....	0
NTDB id 1018 ACIAD RS01685 WP 004920473.1	.....	0
NTDB id 1058 ABD1 RS01615 WP 001274986.1	.....	0
consensus	.....	0

logo

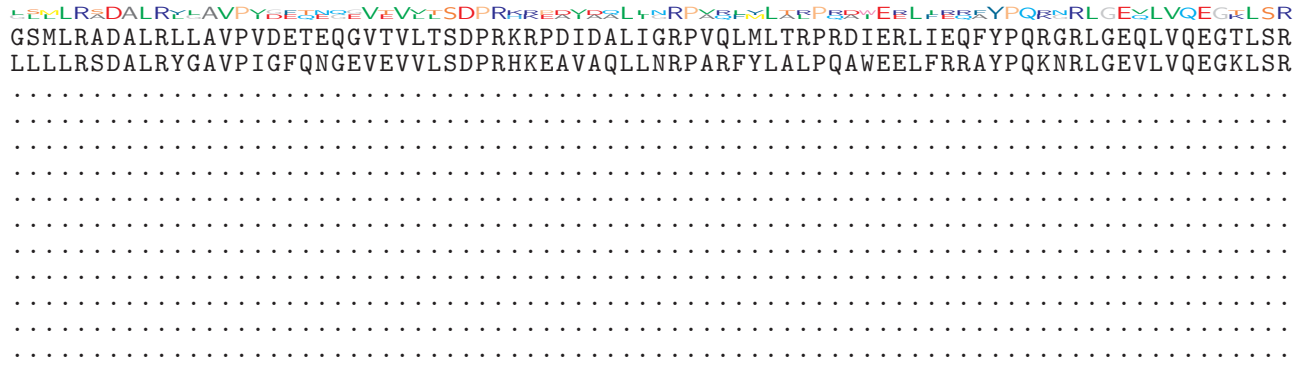
NTDB id 1306 DR RS10060 WP 027479822.1	RSIRPQTALNLQAFPPFALE..GDRRLVALVDPLSSFSIETLEDDSGFDIEPYQALREEVMWAIATHYPELGLLEIVVPSGA	157
NTDB id 1028 TT RS08215 WP 011173991.1	ALLPAEKAKELKAIPFALDEEAGVVRVAFNLPLDTLTSLLEEVEDLTGLVVEPYQTTKSAFLYALAKHYPELGLPVPPP..P	158
NTDB id 1384 A4U84 RS08525 WP 010787006.1	.....	0
NTDB id 304923 DV378 RS05020 WP 005691826.1	.....	0
NTDB id 1355 HI 0298 AAC21962.1	.....	0
NTDB id 1366 NTHI RS01950 WP 011271972.1	.....	0
NTDB id 1168 A1552VC RS11070 WP 000957200.1	.....	0
NTDB id 1401 DSB67 RS12665 WP 010643259.1	.....	0
NTDB id 1293 VP RS12240 WP 005479695.1	.....	0
NTDB id 1110 NGFG RS09235 WP 003689817.1	.....	0
NTDB id 1251 GC085 RS07725 WP 011946523.1	.....	0
NTDB id 1018 ACIAD RS01685 WP 004920473.1	.....	0
NTDB id 1058 ABD1 RS01615 WP 001274986.1	.....	0
consensus	.....	0

logo

NTDB id 1306 DR RS10060 WP 027479822.1	SDAGRTGGKLGRLITHGYITDAQLQVALDAQQTGEALGATLISQRAITEDQLYEVLAEEQEGTTFLPNPSGFGHPGEEVL	237
NTDB id 1028 TT RS08215 WP 011173991.1	SGEGQKDKLKLGELLQKQWISREALEEALVEQEKTGDLLGRILV.RKGLPEEALYRALAEQKGLFLESTEGIVPDPSAA	237
NTDB id 1384 A4U84 RS08525 WP 010787006.1	.....	0
NTDB id 304923 DV378 RS05020 WP 005691826.1	.....	0
NTDB id 1355 HI 0298 AAC21962.1	.....	0
NTDB id 1366 NTHI RS01950 WP 011271972.1	.....	0
NTDB id 1168 A1552VC RS11070 WP 000957200.1	.....	0
NTDB id 1401 DSB67 RS12665 WP 010643259.1	.....	0
NTDB id 1293 VP RS12240 WP 005479695.1	.....	0
NTDB id 1110 NGFG RS09235 WP 003689817.1	.....	0
NTDB id 1251 GC085 RS07725 WP 011946523.1	.....	0
NTDB id 1018 ACIAD RS01685 WP 004920473.1	.....	0
NTDB id 1058 ABD1 RS01615 WP 001274986.1	.....	0
consensus	.....	0

logo

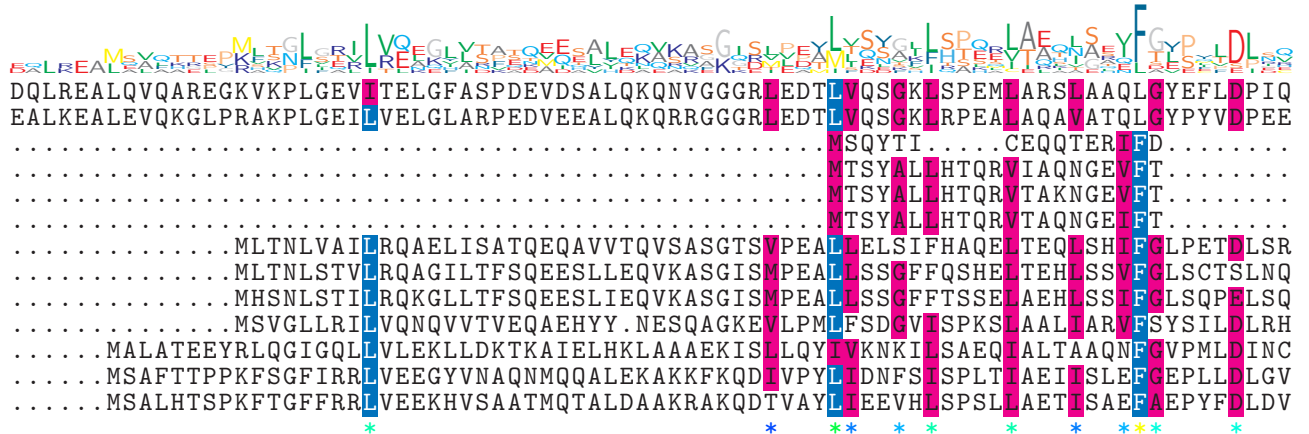
NTDB id 1306 DR RS10060 WP 027479822.1
NTDB id 1028 TT RS08215 WP 011173991.1
NTDB id 1384 A4U84 RS08525 WP 010787006.1
NTDB id 304923 DV378 RS05020 WP 005691826.1
NTDB id 1355 HI 0298 AAC21962.1
NTDB id 1366 NTHI RS01950 WP 011271972.1
NTDB id 1168 A1552VC RS11070 WP 000957200.1
NTDB id 1401 DSB67 RS12665 WP 010643259.1
NTDB id 1293 VP RS12240 WP 005479695.1
NTDB id 1110 NGFG RS09235 WP 003689817.1
NTDB id 1251 GC085 RS07725 WP 011946523.1
NTDB id 1018 ACIAD RS01685 WP 004920473.1
NTDB id 1058 ABD1 RS01615 WP 001274986.1
consensus



317
317
0
0
0
0
0
0
0
0
0
0
0
0

logo

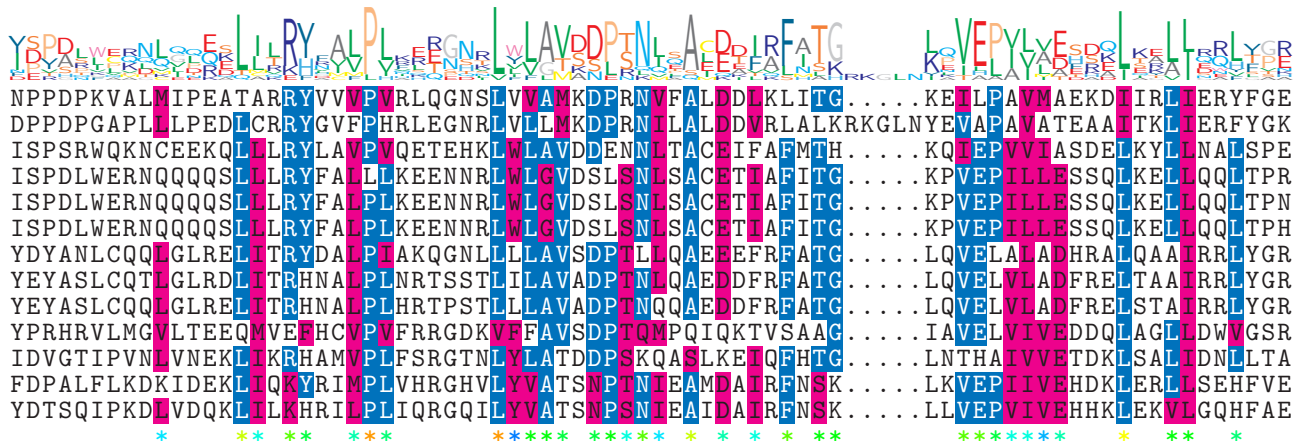
NTDB id 1306 DR RS10060 WP 027479822.1
NTDB id 1028 TT RS08215 WP 011173991.1
NTDB id 1384 A4U84 RS08525 WP 010787006.1
NTDB id 304923 DV378 RS05020 WP 005691826.1
NTDB id 1355 HI 0298 AAC21962.1
NTDB id 1366 NTHI RS01950 WP 011271972.1
NTDB id 1168 A1552VC RS11070 WP 000957200.1
NTDB id 1401 DSB67 RS12665 WP 010643259.1
NTDB id 1293 VP RS12240 WP 005479695.1
NTDB id 1110 NGFG RS09235 WP 003689817.1
NTDB id 1251 GC085 RS07725 WP 011946523.1
NTDB id 1018 ACIAD RS01685 WP 004920473.1
NTDB id 1058 ABD1 RS01615 WP 001274986.1
consensus



397
397
16
21
21
21
66
66
66
65
74
74
74

logo

NTDB id 1306 DR RS10060 WP 027479822.1
NTDB id 1028 TT RS08215 WP 011173991.1
NTDB id 1384 A4U84 RS08525 WP 010787006.1
NTDB id 304923 DV378 RS05020 WP 005691826.1
NTDB id 1355 HI 0298 AAC21962.1
NTDB id 1366 NTHI RS01950 WP 011271972.1
NTDB id 1168 A1552VC RS11070 WP 000957200.1
NTDB id 1401 DSB67 RS12665 WP 010643259.1
NTDB id 1293 VP RS12240 WP 005479695.1
NTDB id 1110 NGFG RS09235 WP 003689817.1
NTDB id 1251 GC085 RS07725 WP 011946523.1
NTDB id 1018 ACIAD RS01685 WP 004920473.1
NTDB id 1058 ABD1 RS01615 WP 001274986.1
consensus



472
477
91
96
96
96
141
141
140
149
149
149

logo

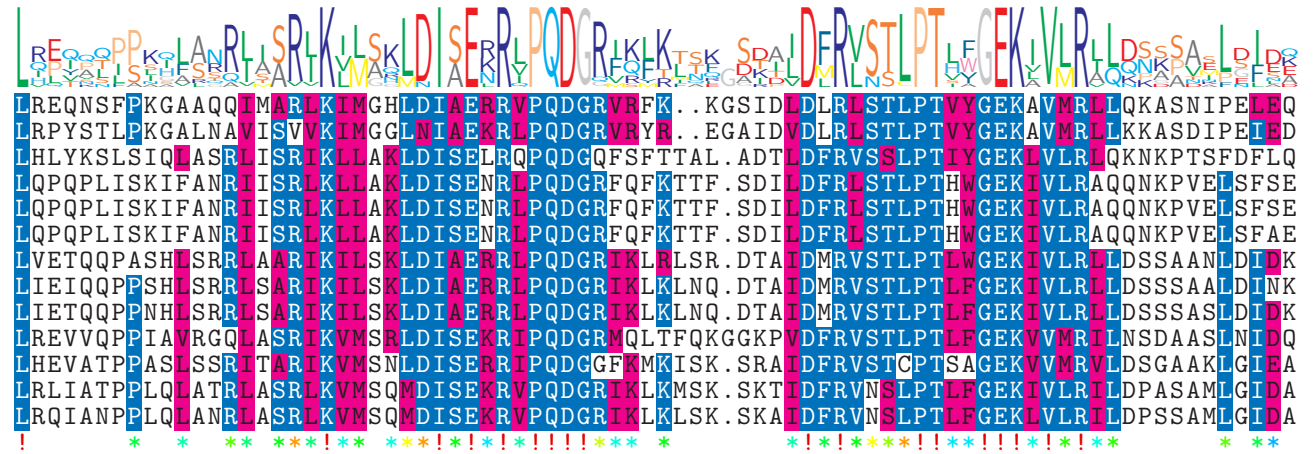
NTDB id 1306 DR RS10060 WP 027479822.1  
 NTDB id 1028 TT RS08215 WP 011173991.1  
 NTDB id 1384 A4U84 RS08525 WP 010787006.1  
 NTDB id 304923 DV378 RS05020 WP 005691826.1  
 NTDB id 1355 HI 0298 AAC21962.1  
 NTDB id 1366 NTHI RS01950 WP 011271972.1  
 NTDB id 1168 A1552VC RS11070 WP 000957200.1  
 NTDB id 1401 DSB67 RS12665 WP 010643259.1  
 NTDB id 1293 VP RS12240 WP 005479695.1  
 NTDB id 1110 NGFG RS09235 WP 003689817.1  
 NTDB id 1251 GC085 RS07725 WP 011946523.1  
 NTDB id 1018 ACIAD RS01685 WP 004920473.1  
 NTDB id 1058 ABD1 RS01615 WP 001274986.1



541  
544  
154  
159  
159  
219  
219  
219  
209  
228  
223  
223

logo

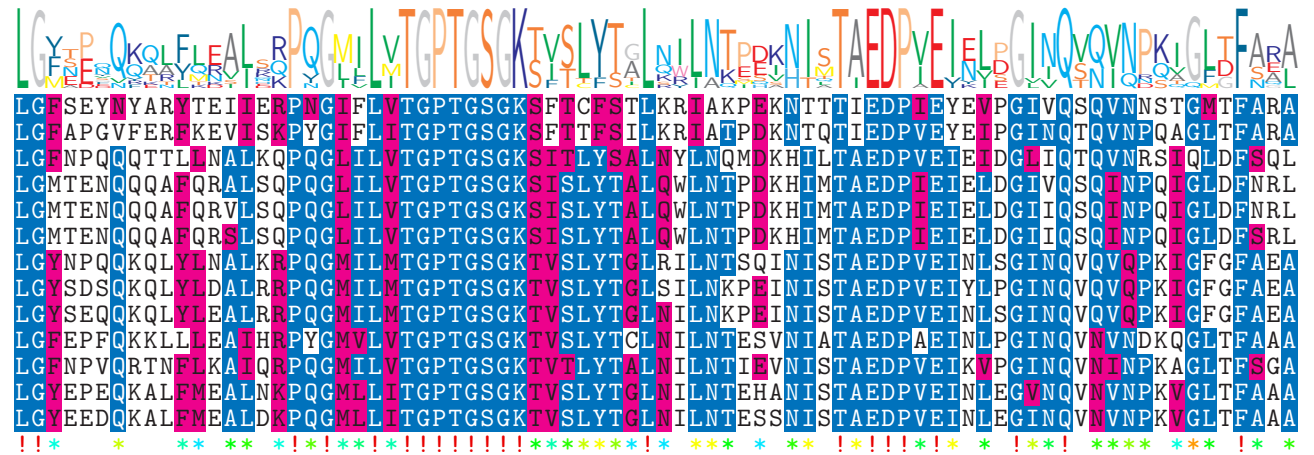
NTDB id 1306 DR RS10060 WP 027479822.1  
 NTDB id 1028 TT RS08215 WP 011173991.1  
 NTDB id 1384 A4U84 RS08525 WP 010787006.1  
 NTDB id 304923 DV378 RS05020 WP 005691826.1  
 NTDB id 1355 HI 0298 AAC21962.1  
 NTDB id 1366 NTHI RS01950 WP 011271972.1  
 NTDB id 1168 A1552VC RS11070 WP 000957200.1  
 NTDB id 1401 DSB67 RS12665 WP 010643259.1  
 NTDB id 1293 VP RS12240 WP 005479695.1  
 NTDB id 1110 NGFG RS09235 WP 003689817.1  
 NTDB id 1251 GC085 RS07725 WP 011946523.1  
 NTDB id 1018 ACIAD RS01685 WP 004920473.1  
 NTDB id 1058 ABD1 RS01615 WP 001274986.1



619  
622  
233  
238  
238  
238  
298  
298  
298  
289  
307  
302  
302

logo

NTDB id 1306 DR RS10060 WP 027479822.1  
 NTDB id 1028 TT RS08215 WP 011173991.1  
 NTDB id 1384 A4U84 RS08525 WP 010787006.1  
 NTDB id 304923 DV378 RS05020 WP 005691826.1  
 NTDB id 1355 HI 0298 AAC21962.1  
 NTDB id 1366 NTHI RS01950 WP 011271972.1  
 NTDB id 1168 A1552VC RS11070 WP 000957200.1  
 NTDB id 1401 DSB67 RS12665 WP 010643259.1  
 NTDB id 1293 VP RS12240 WP 005479695.1  
 NTDB id 1110 NGFG RS09235 WP 003689817.1  
 NTDB id 1251 GC085 RS07725 WP 011946523.1  
 NTDB id 1018 ACIAD RS01685 WP 004920473.1  
 NTDB id 1058 ABD1 RS01615 WP 001274986.1



699  
702  
313  
318  
318  
318  
378  
378  
378  
369  
387  
382  
382

logo

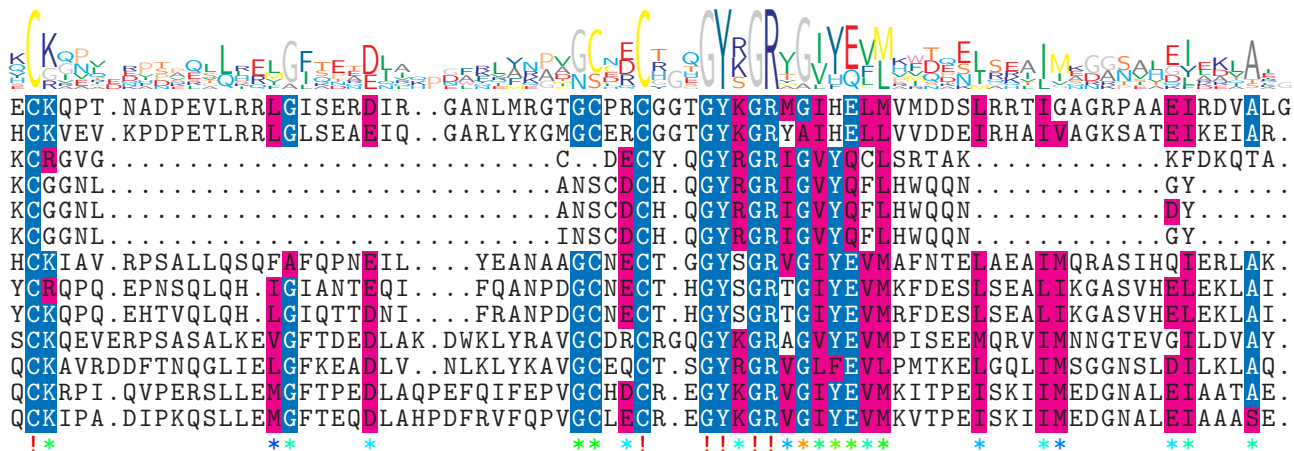
NTDB id 1306 DR RS10060 WP 027479822.1  
 NTDB id 1028 TT RS08215 WP 011173991.1  
 NTDB id 1384 A4U84 RS08525 WP 010787006.1  
 NTDB id 304923 DV378 RS05020 WP 005691826.1  
 NTDB id 1355 HI 0298 AAC21962.1  
 NTDB id 1366 NTHI RS01950 WP 011271972.1  
 NTDB id 1168 A1552VC RS11070 WP 000957200.1  
 NTDB id 1401 DSB67 RS12665 WP 010643259.1  
 NTDB id 1293 VP RS12240 WP 005479695.1  
 NTDB id 1110 NGFG RS09235 WP 003689817.1  
 NTDB id 1251 GC085 RS07725 WP 011946523.1  
 NTDB id 1018 ACIAD RS01685 WP 004920473.1  
 NTDB id 1058 ABD1 RS01615 WP 001274986.1  
 consensus



779  
782  
393  
398  
398  
398  
458  
458  
458  
449  
467  
462  
462

logo

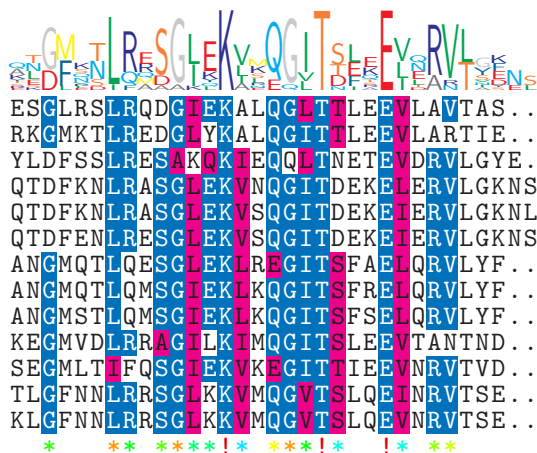
NTDB id 1306 DR RS10060 WP 027479822.1  
 NTDB id 1028 TT RS08215 WP 011173991.1  
 NTDB id 1384 A4U84 RS08525 WP 010787006.1  
 NTDB id 304923 DV378 RS05020 WP 005691826.1  
 NTDB id 1355 HI 0298 AAC21962.1  
 NTDB id 1366 NTHI RS01950 WP 011271972.1  
 NTDB id 1168 A1552VC RS11070 WP 000957200.1  
 NTDB id 1401 DSB67 RS12665 WP 010643259.1  
 NTDB id 1293 VP RS12240 WP 005479695.1  
 NTDB id 1110 NGFG RS09235 WP 003689817.1  
 NTDB id 1251 GC085 RS07725 WP 011946523.1  
 NTDB id 1018 ACIAD RS01685 WP 004920473.1  
 NTDB id 1058 ABD1 RS01615 WP 001274986.1  
 consensus



856  
858  
429  
431  
431  
431  
531  
530  
530  
527  
543  
539  
539

logo

NTDB id 1306 DR RS10060 WP 027479822.1  
 NTDB id 1028 TT RS08215 WP 011173991.1  
 NTDB id 1384 A4U84 RS08525 WP 010787006.1  
 NTDB id 304923 DV378 RS05020 WP 005691826.1  
 NTDB id 1355 HI 0298 AAC21962.1  
 NTDB id 1366 NTHI RS01950 WP 011271972.1  
 NTDB id 1168 A1552VC RS11070 WP 000957200.1  
 NTDB id 1401 DSB67 RS12665 WP 010643259.1  
 NTDB id 1293 VP RS12240 WP 005479695.1  
 NTDB id 1110 NGFG RS09235 WP 003689817.1  
 NTDB id 1251 GC085 RS07725 WP 011946523.1  
 NTDB id 1018 ACIAD RS01685 WP 004920473.1  
 NTDB id 1058 ABD1 RS01615 WP 001274986.1  
 consensus



887  
889  
461  
464  
464  
464  
562  
561  
561  
558  
574  
570  
570

 non conserved  
 similar  
  $\geq 50\%$  conserved