

logo

NTDB id 303292 soil367 RS03505 WP 136546949.1
 NTDB id 125 BSU 00870 NP 387968.1
 NTDB id 509 SM12261 RS00130 WP 078228442.1
 NTDB id 279 KZH43 RS00140 WP 074017595.1
 NTDB id 238 SPD RS00140 WP 074017595.1
 NTDB id 204 SPR RS00140 WP 074017595.1
 NTDB id 169 SP RS00155 WP 074017595.1
 NTDB id 537 SMSK321 RS07120 WP 080550752.1
 consensus



77
77
74
74
74
74
74
74
74

logo

NTDB id 303292 soil367 RS03505 WP 136546949.1
 NTDB id 125 BSU 00870 NP 387968.1
 NTDB id 509 SM12261 RS00130 WP 078228442.1
 NTDB id 279 KZH43 RS00140 WP 074017595.1
 NTDB id 238 SPD RS00140 WP 074017595.1
 NTDB id 204 SPR RS00140 WP 074017595.1
 NTDB id 169 SP RS00155 WP 074017595.1
 NTDB id 537 SMSK321 RS07120 WP 080550752.1
 consensus



156
157
153
153
153
153
153
153

logo

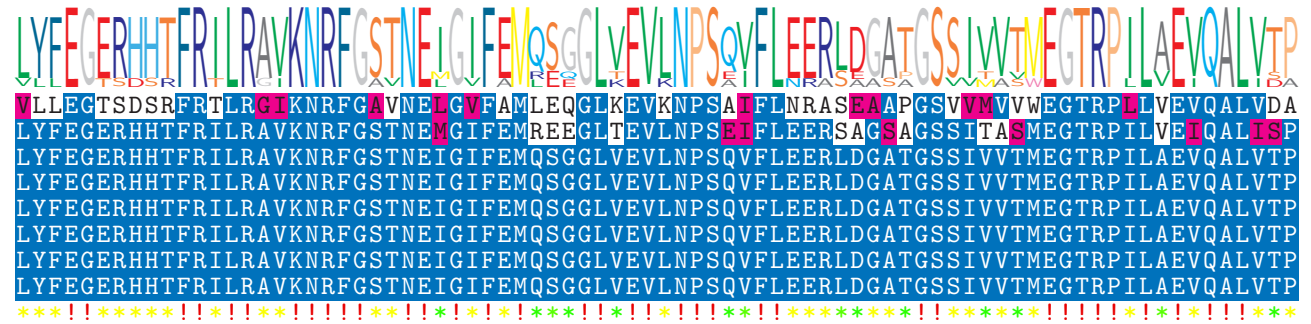
NTDB id 303292 soil367 RS03505 WP 136546949.1
 NTDB id 125 BSU 00870 NP 387968.1
 NTDB id 509 SM12261 RS00130 WP 078228442.1
 NTDB id 279 KZH43 RS00140 WP 074017595.1
 NTDB id 238 SPD RS00140 WP 074017595.1
 NTDB id 204 SPR RS00140 WP 074017595.1
 NTDB id 169 SP RS00155 WP 074017595.1
 NTDB id 537 SMSK321 RS07120 WP 080550752.1
 consensus



236
237
233
233
233
233
233
233

logo

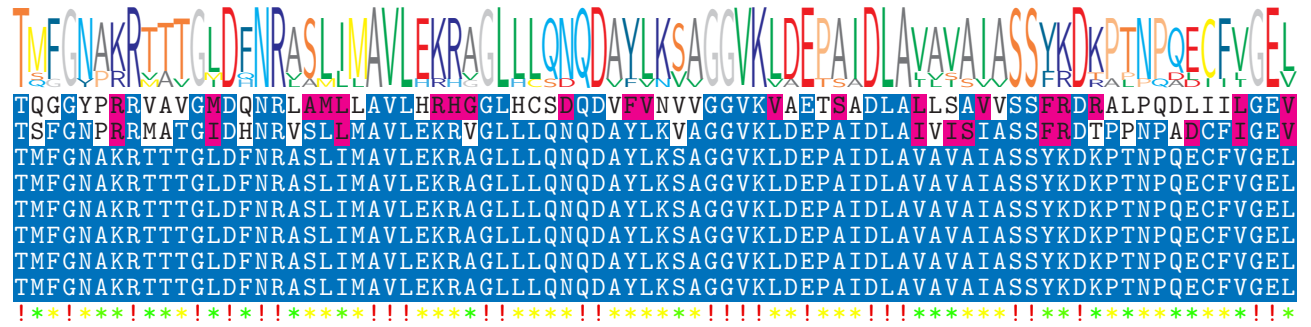
NTDB id 303292 soil367 RS03505 WP 136546949.1
 NTDB id 125 BSU 00870 NP 387968.1
 NTDB id 509 SM12261 RS00130 WP 078228442.1
 NTDB id 279 KZH43 RS00140 WP 074017595.1
 NTDB id 238 SPD RS00140 WP 074017595.1
 NTDB id 204 SPR RS00140 WP 074017595.1
 NTDB id 169 SP RS00155 WP 074017595.1
 NTDB id 537 SMSK321 RS07120 WP 080550752.1
 consensus



316
317
313
313
313
313
313
313

logo

NTDB id 303292 soil367 RS03505 WP 136546949.1
 NTDB id 125 BSU 00870 NP 387968.1
 NTDB id 509 SM12261 RS00130 WP 078228442.1
 NTDB id 279 KZH43 RS00140 WP 074017595.1
 NTDB id 238 SPD RS00140 WP 074017595.1
 NTDB id 204 SPR RS00140 WP 074017595.1
 NTDB id 169 SP RS00155 WP 074017595.1
 NTDB id 537 SMSK321 RS07120 WP 080550752.1
 consensus



396
397
393
393
393
393
393
393

logo

NTDB id 303292 soil367 RS03505 WP 136546949.1
 NTDB id 125 BSU 00870 NP 387968.1
 NTDB id 509 SM12261 RS00130 WP 078228442.1
 NTDB id 279 KZH43 RS00140 WP 074017595.1
 NTDB id 238 SPD RS00140 WP 074017595.1
 NTDB id 204 SPR RS00140 WP 074017595.1
 NTDB id 169 SP RS00155 WP 074017595.1
 NTDB id 537 SMSK321 RS07120 WP 080550752.1
 consensus



458
458
453
453
453
453
453
453

X non conserved
X similar
X >= 50% conserved