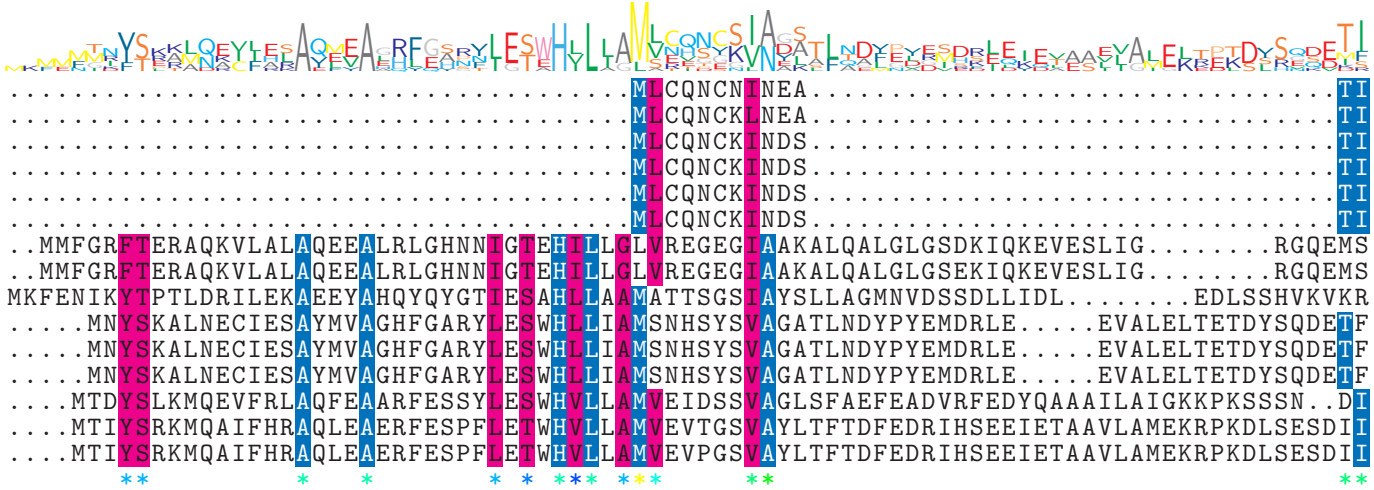


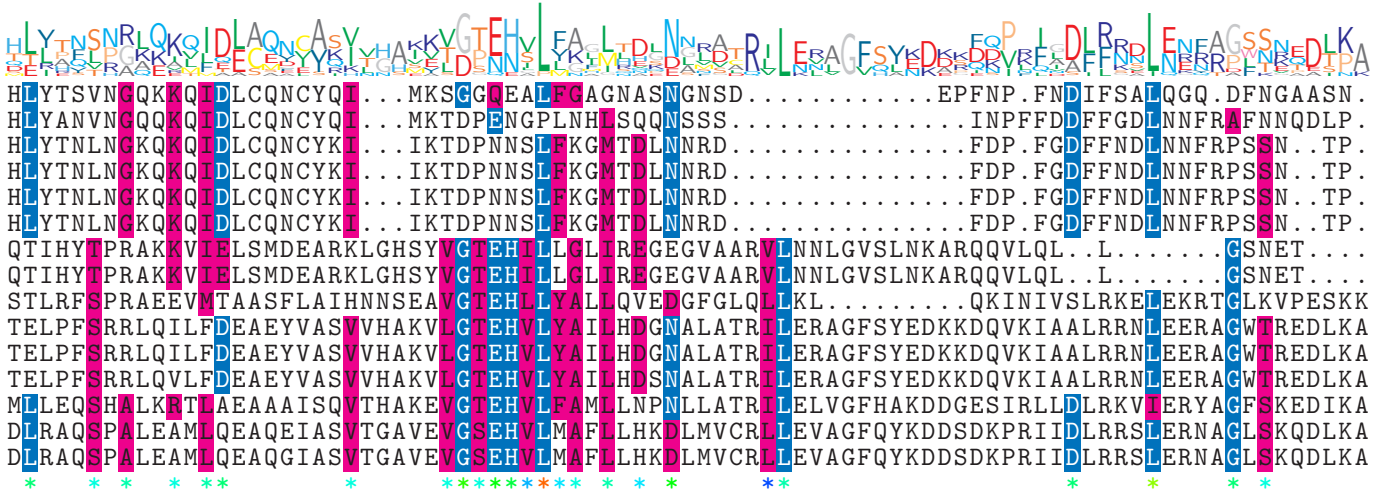
Logo

NTDB id 601 KW2 RS02615 WP 021036805.1
 NTDB id 378 SMU RS02690 WP 002263569.1
 NTDB id 241 SP RS04015 WP 000882523.1
 NTDB id 281 KZH43 RS03550 WP 000882517.1
 NTDB id 245 SPD RS03860 WP 000882517.1
 NTDB id 243 SPR RS03635 WP 000882517.1
 NTDB id 29923 BACAU RS00575 WP 007410388.1
 NTDB id 85 BSU 00860 NP 387967.1
 NTDB id 610 V4T04 RS10165 WP 012897346.1
 NTDB id 290 KZH43 RS10025 WP 001109677.1
 NTDB id 289 SPD RS10700 WP 001109677.1
 NTDB id 287 SP RS11210 WP 001109712.1
 NTDB id 377 SMU RS09275 WP 002262344.1
 NTDB id 297 STER RS00545 WP 011680614.1
 NTDB id 329 STU RS10020 WP 011225298.1



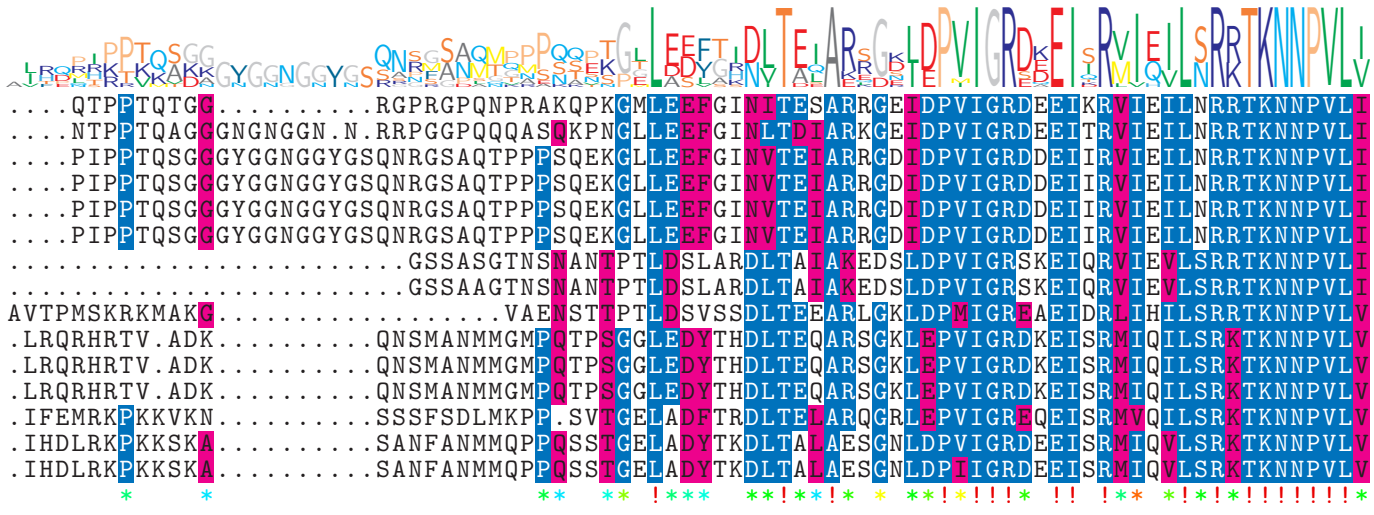
Logo

NTDB id 601 KW2 RS02615 WP 021036805.1
 NTDB id 378 SMU RS02690 WP 002263569.1
 NTDB id 241 SP RS04015 WP 000882523.1
 NTDB id 281 KZH43 RS03550 WP 000882517.1
 NTDB id 245 SPD RS03860 WP 000882517.1
 NTDB id 243 SPR RS03635 WP 000882517.1
 NTDB id 29923 BACAU RS00575 WP 007410388.1
 NTDB id 85 BSU 00860 NP 387967.1
 NTDB id 610 V4T04 RS10165 WP 012897346.1
 NTDB id 290 KZH43 RS10025 WP 001109677.1
 NTDB id 289 SPD RS10700 WP 001109677.1
 NTDB id 287 SP RS11210 WP 001109712.1
 NTDB id 377 SMU RS09275 WP 002262344.1
 NTDB id 297 STER RS00545 WP 011680614.1
 NTDB id 329 STU RS10020 WP 011225298.1



Logo

NTDB id 601 KW2 RS02615 WP 021036805.1
 NTDB id 378 SMU RS02690 WP 002263569.1
 NTDB id 241 SP RS04015 WP 000882523.1
 NTDB id 281 KZH43 RS03550 WP 000882517.1
 NTDB id 245 SPD RS03860 WP 000882517.1
 NTDB id 243 SPR RS03635 WP 000882517.1
 NTDB id 29923 BACAU RS00575 WP 007410388.1
 NTDB id 85 BSU 00860 NP 387967.1
 NTDB id 610 V4T04 RS10165 WP 012897346.1
 NTDB id 290 KZH43 RS10025 WP 001109677.1
 NTDB id 289 SPD RS10700 WP 001109677.1
 NTDB id 287 SP RS11210 WP 001109712.1
 NTDB id 377 SMU RS09275 WP 002262344.1
 NTDB id 297 STER RS00545 WP 011680614.1
 NTDB id 329 STU RS10020 WP 011225298.1
 consensus



151
158
157
157
157
157
207
207
220
233
233
233
237
240
240

Logo

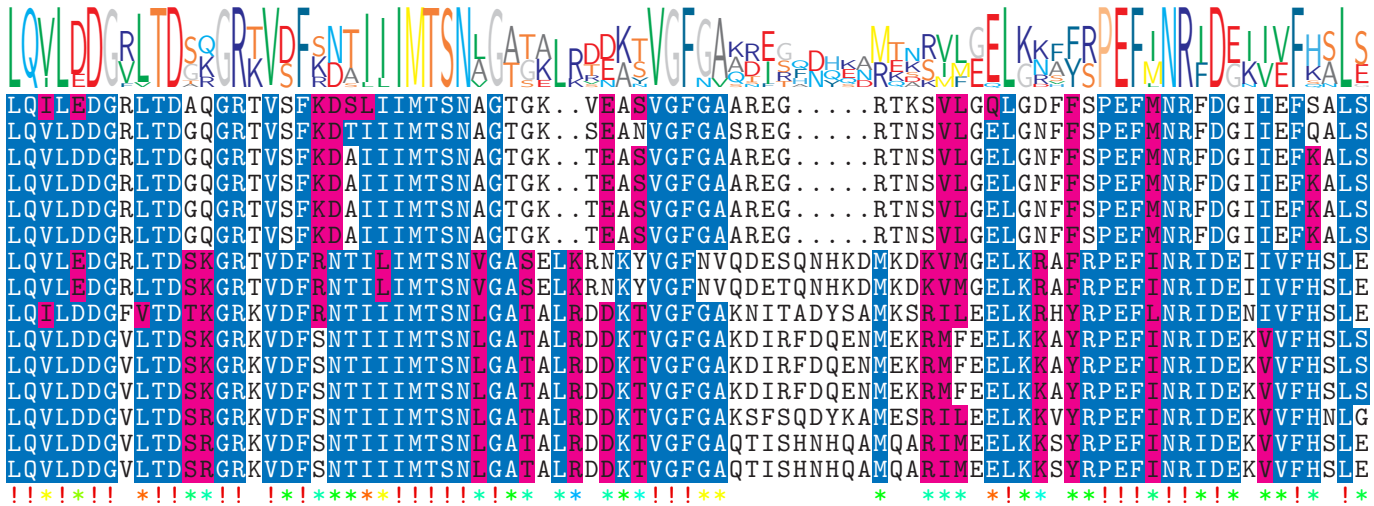
NTDB id 601 KW2 RS02615 WP 021036805.1
 NTDB id 378 SMU RS02690 WP 002263569.1
 NTDB id 241 SP RS04015 WP 000882523.1
 NTDB id 281 KZH43 RS03550 WP 000882517.1
 NTDB id 245 SPD RS03860 WP 000882517.1
 NTDB id 243 SPR RS03635 WP 000882517.1
 NTDB id 29923 BACAU RS00575 WP 007410388.1
 NTDB id 85 BSU 00860 NP 387967.1
 NTDB id 610 V4T04 RS10165 WP 012897346.1
 NTDB id 290 KZH43 RS10025 WP 001109677.1
 NTDB id 289 SPD RS10700 WP 001109677.1
 NTDB id 287 SP RS11210 WP 001109712.1
 NTDB id 377 SMU RS09275 WP 002262344.1
 NTDB id 297 STER RS00545 WP 011680614.1
 NTDB id 329 STU RS10020 WP 011225298.1
 consensus



236
243
242
242
242
242
291
291
305
318
318
318
322
325
325

Logo

NTDB id 601 KW2 RS02615 WP 021036805.1
 NTDB id 378 SMU RS02690 WP 002263569.1
 NTDB id 241 SP RS04015 WP 000882523.1
 NTDB id 281 KZH43 RS03550 WP 000882517.1
 NTDB id 245 SPD RS03860 WP 000882517.1
 NTDB id 243 SPR RS03635 WP 000882517.1
 NTDB id 29923 BACAU RS00575 WP 007410388.1
 NTDB id 85 BSU 00860 NP 387967.1
 NTDB id 610 V4T04 RS10165 WP 012897346.1
 NTDB id 290 KZH43 RS10025 WP 001109677.1
 NTDB id 289 SPD RS10700 WP 001109677.1
 NTDB id 287 SP RS11210 WP 001109712.1
 NTDB id 377 SMU RS09275 WP 002262344.1
 NTDB id 297 STER RS00545 WP 011680614.1
 NTDB id 329 STU RS10020 WP 011225298.1
 consensus



644
651
650
650
650
650
715
715
724
719
719
719
722
725
725

Logo

NTDB id 601 KW2 RS02615 WP 021036805.1
 NTDB id 378 SMU RS02690 WP 002263569.1
 NTDB id 241 SP RS04015 WP 000882523.1
 NTDB id 281 KZH43 RS03550 WP 000882517.1
 NTDB id 245 SPD RS03860 WP 000882517.1
 NTDB id 243 SPR RS03635 WP 000882517.1
 NTDB id 29923 BACAU RS00575 WP 007410388.1
 NTDB id 85 BSU 00860 NP 387967.1
 NTDB id 610 V4T04 RS10165 WP 012897346.1
 NTDB id 290 KZH43 RS10025 WP 001109677.1
 NTDB id 289 SPD RS10700 WP 001109677.1
 NTDB id 287 SP RS11210 WP 001109712.1
 NTDB id 377 SMU RS09275 WP 002262344.1
 NTDB id 297 STER RS00545 WP 011680614.1
 NTDB id 329 STU RS10020 WP 011225298.1
 consensus



728
735
734
734
734
734
800
800
809
804
804
804
807
810
810

logo



NTDB id 601 KW2 RS02615 WP 021036805.1	V	I	S	N	Q	T	Q	E	T	A	E	T	T	D	E	E	V	P	A	E	748
NTDB id 378 SMU RS02690 WP 002263569.1	I	V	I	K	A	S	N	K	.	V	E	T	V	T	K	A	T	S	D	.	753
NTDB id 241 SP RS04015 WP 000882523.1	I	Q	I	K	S	A	K	.	A	E	V	K	S	S	E	K	E	K	.	.	752
NTDB id 281 KZH43 RS03550 WP 000882517.1	I	Q	I	K	S	A	K	.	A	E	V	K	S	S	E	K	E	K	.	.	752
NTDB id 245 SPD RS03860 WP 000882517.1	I	Q	I	K	S	A	K	.	A	E	V	K	S	S	E	K	E	K	.	.	752
NTDB id 243 SPR RS03635 WP 000882517.1	I	Q	I	K	S	A	K	.	A	E	V	K	S	S	E	K	E	K	.	.	752
NTDB id 29923 BACAU RS00575 WP 007410388.1	F	V	V	K	T	T	A	K	T	N	810
NTDB id 85 BSU 00860 NP 387967.1	F	V	V	K	T	T	A	K	T	N	810
NTDB id 610 V4T04 RS10165 WP 012897346.1	I	K	I	A	Q	I	V	816
NTDB id 290 KZH43 RS10025 WP 001109677.1	L	K	F	D	I	A	810
NTDB id 289 SPD RS10700 WP 001109677.1	L	K	F	D	I	A	810
NTDB id 287 SP RS11210 WP 001109712.1	L	K	F	D	I	A	810
NTDB id 377 SMU RS09275 WP 002262344.1	L	K	F	D	I	V	813
NTDB id 297 STER RS00545 WP 011680614.1	L	T	F	T	V	V	816
NTDB id 329 STU RS10020 WP 011225298.1	L	T	F	T	V	V	816
consensus	*																				

- X non conserved
- X similar
- X ≥ 50% conserved