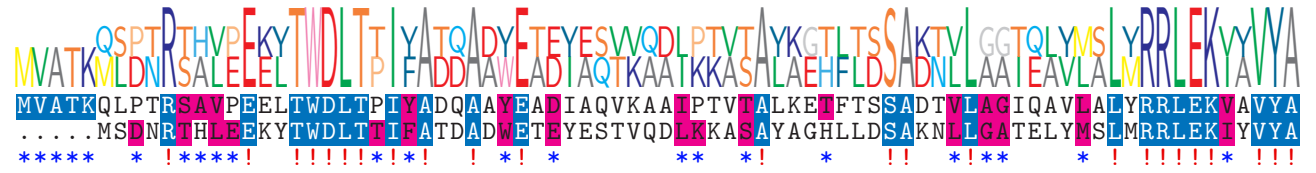


logo

NTDB id 269997 C3083 RS07080 WP 063852101.1
NTDB id 480 HSISS4 RS02090 WP 002890133.1
consensus



80
75

logo

NTDB id 269997 C3083 RS07080 WP 063852101.1
NTDB id 480 HSISS4 RS02090 WP 002890133.1
consensus



160
155

logo

NTDB id 269997 C3083 RS07080 WP 063852101.1
NTDB id 480 HSISS4 RS02090 WP 002890133.1
consensus



240
235

logo

NTDB id 269997 C3083 RS07080 WP 063852101.1
NTDB id 480 HSISS4 RS02090 WP 002890133.1
consensus



320
314

logo

NTDB id 269997 C3083 RS07080 WP 063852101.1
NTDB id 480 HSISS4 RS02090 WP 002890133.1
consensus



400
394

logo

NTDB id 269997 C3083 RS07080 WP 063852101.1
NTDB id 480 HSISS4 RS02090 WP 002890133.1
consensus



480
474

logo

NTDB id 269997 C3083 RS07080 WP 063852101.1
NTDB id 480 HSISS4 RS02090 WP 002890133.1
consensus



560
554

