

logo



NTDB id 600 KW2 RS01765 WP 011675413.1	MATKK....KTNFDDITKKYGAERDKALADALALIEKD FGKGSIMRLGERAEAN.QKVS VSSGSLALDIALGAGGYPKGR	74
NTDB id 269 KZH43 RS08665 WP 001085462.1	.MAKK....PKKLEEISKKFGAEREKALNDALKLIEKDFGKGSIMRLGERAE.QKVQVMSSGSLALDIALGSGGYPKGR	73
NTDB id 228 SPD RS09265 WP 001085462.1	.MAKK....PKKLEEISKKFGAEREKALNDALKLIEKDFGKGSIMRLGERAE.QKVQVMSSGSLALDIALGSGGYPKGR	73
NTDB id 194 SPR RS08825 WP 001085462.1	.MAKK....PKKLEEISKKFGAEREKALNDALKLIEKDFGKGSIMRLGERAE.QKVQVMSSGSLALDIALGSGGYPKGR	73
NTDB id 159 SP RS09750 WP 001085462.1	.MAKK....PKKLEEISKKFGAEREKALNDALKLIEKDFGKGSIMRLGERAE.QKVQVMSSGSLALDIALGSGGYPKGR	73
NTDB id 499 SM12261 RS08315 WP 078228268.1	.MAKK....PKKLDEISKKFGAEREKALNDALKLIEKDFGKGSIMRLGERAE.QKVQVMSSGSLALDIALGSGGYPKGR	73
NTDB id 527 SMSK321 RS11065 WP 001085454.1	.MAKK....PKKLDEISKKFGAEREKALNDALKLIEKDFGKGSIMRLGERAE.QKVQVMSSGSLALDIALGSGGYPKGR	73
NTDB id 408 SMU RS09530 WP 002262392.1	.MAKR....IKKTEEITKKFGDERRKALDDALKNIEKDFGKGAVMRLGERAE.QKVQVMSSGSLALDIALGAGGYPKGR	73
NTDB id 453 Spy49 1753c ACI62003.1	.MAKK....LKKNEEITKKFGDERRKALDDALKNIEKDFGKGAVMRLGERAE.QKVQVMSSGSLALDIALGAGGYPKGR	73
NTDB id 115 BSU 16940 NP 389576.2MSDRQAALDMALKQIEKQFGKGSIMKLGKTD.TRISTVPSGSLALDITALGIGGYPKGR	58
NTDB id 625 LCA RS02525 WP 011374196.1MAKDERQAALDAALKKIEKNFGKGSIMRMGEKVD.TQVSTVSSGSLALDEALGVGGYPKGR	60
NTDB id 1313 DR RS12030 WP 010888966.1MSKDATKEISAPTDAKERSKATETAMSIKQIEKAFGKGSIMKLGAEK.LDVQVSTGSLSLDLALGVGGIPKGR	72
NTDB id 1245 Cj1673c YP 002345041.1MDNKRKSLDAALKS LDKT FGKGTILRLGDKV.EQIDSIGTGSVGLDLALGIGGVPKGR	59
NTDB id 1211 C694 RS00795 WP 000963128.1MAIDEDKQKATISLAIKQIDKVF GK GALVRLGDKQV.EKIDSISTGSLGLDLALGIGGVPKGR	61
NTDB id 1214 NCTC11637 00359 SQJ03206.1MAIDEDKQKATISLAIKQIDKVF GK GALVRLGDKQV.EKIDAISTGSLGLDLALGIGGVPKGR	61
NTDB id 1334 RAOC RS04870 WP 004918236.1MAKT..ETTSPNDDKKKALAAVLEKLDKTYGKGTVMKLGDTVDHNIIEVIPSGLGLDLALGVGGYPKGR	68
NTDB id 1389 A4U84 RS07560 WP 021112712.1	.MAENKKSNNNTV.VKQVEPEQKKQALEAALAIKQIEKQFGKGSIMKLGQTEQ.LDIESVSTGSLGLDLALGIGGLPMGR	76
NTDB id 1130 NGFG RS03960 WP 003688695.1MSDDKSKALAAALAIKQIEKQFGKGAIMKMDGSQEEENLEVISTGSLGLDLALGVGGLPKGR	60
NTDB id 1124 NGFG RS03960 WP 003688695.1MSDDKSKALAAALAIKQIEKQFGKGAIMKMDGSQEEENLEVISTGSLGLDLALGVGGLPKGR	60
NTDB id 1123 OK783 RS03845 WP 003688695.1MSDDKSKALAAALAIKQIEKQFGKGAIMKMDGSQEEENLEVISTGSLGLDLALGVGGLPKGR	60
NTDB id 1427 RS RS02760 WP 011000510.1	.MEDG.....K..KAASMSAEKQKALAAALAIKQIEKQFGKGSIMKMGDAEV.EPVQVSTGSLGLDVALGVGGLPKGR	68
NTDB id 1165 A1552VC RS01565 WP 000344154.1MDENKQKALAAALGQIEKQFGKGSIMRLGDNRA.MDVETISTGSLSLDIALGAGGLPMGR	59
NTDB id 1142 GTF74 RS11550 WP 000344154.1MDENKQKALAAALGQIEKQFGKGSIMRLGDNRA.MDVETISTGSLSLDIALGAGGLPMGR	59
NTDB id 26889 KKOR RS07195 WP 012801366.1MDDNKKKALGAALTQIERQFGKGSIMRLGDNRA.MDVETISTGSLGLDIALGIGGLPKGR	60
NTDB id 1074 ABD1 RS10195 WP 000344167.1MDENKSKALQAALSQIEKQFGKNTVMRLGDNNTV.QAVEAVSTGSLTLDIALGIGGLPKGR	59
NTDB id 1022 ACIAD RS06390 WP 004925639.1MDDNKSKALQAALSQIEKQFGKNTVMRLGDNNTV.QAVEAVSTGSLTLDIALGIGGLPKGR	59
NTDB id 1205 PSJM300 05545 AFN77183.1MDENKKBALAAALGQIEKQFGKGAVMRMGDHR.QAIPSIISTGSLGLDIALGIGGLPKGR	59
consensus	*** ** * **** *!!!!***** * ****!!*!!*!!*!!*!!*!!*!!*!!	

logo

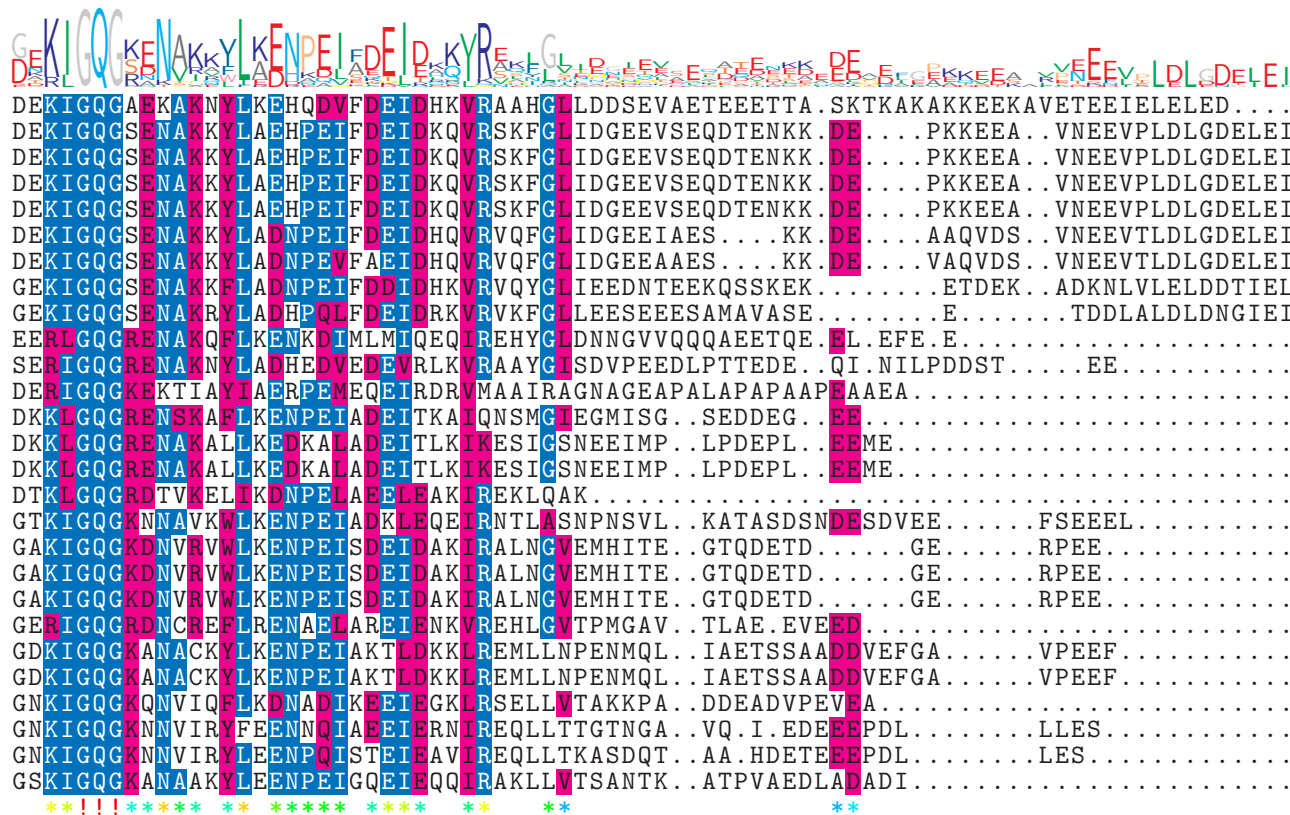


NTDB id 600	KW2	RS01765	WP 011675413.1	SVRLDVRGSTKIEEGS.GDNKTQIGK	ITKIKVVKNKVAPPFKVALVDIMFGEGISSTGELINIAVEEGI	TKKSGAWFAYN	312							
NTDB id 269	KZH43	RS08665	WP 001085462.1	SVRLDVRGNTQIKGTG.DQKETN	VGKETKIKVVKNKVAPPFKEAVVEIMYGEGISKTGELLKIASDL	DIKKAGAWYSYK	311							
NTDB id 228	SPD	RS09265	WP 001085462.1	SVRLDVRGNTQIKGTG.DQKETN	VGKETKIKVVKNKVAPPFKEAVVEIMYGEGISKTGELLKIASDL	DIKKAGAWYSYK	311							
NTDB id 194	SPR	RS08825	WP 001085462.1	SVRLDVRGNTQIKGTG.DQKETN	VGKETKIKVVKNKVAPPFKEAVVEIMYGEGISKTGELLKIASDL	DIKKAGAWYSYK	311							
NTDB id 159	SP	RS09750	WP 001085462.1	SVRLDVRGNTQIKGTG.DQKETN	VGKETKIKVVKNKVAPPFKEAVVEIMYGEGISKTGELLKIASDL	DIKKAGAWYSYK	311							
NTDB id 499	SM12261	RS08315	WP 078228268.1	SVRLDVRGSTQIKGTG.DQKDTN	VGKETKIKVVKNKVAPPFKEAFVEIMYGEGISKTGELLKIASDL	DIKKAGAWYSYK	311							
NTDB id 527	SMSK321	RS11065	WP 001085454.1	SVRLDVRGSTQIKGTG.DQKDTN	VGKETKIKVVKNKVAPPFKEAFVEIMYGEGISKTGELLKIASDL	DIKKAGAWYSYK	311							
NTDB id 408	SMU	RS09530	WP 002262392.1	SVRLDVRGNTQIKGTG.EQKDSN	IGKETKIKVVKNKVAPPFKEAFVEIITYGEGISRTGELVKIASDL	GIQKAGAWYSYN	311							
NTDB id 453	Spy49	1753c	ACI62003.1	SVRLDVRGTTQIKGTG.DQKDS	IGKETKIKVVKNKVAPPFKEAVVEIMYGEGISRTGELVKIASDL	DIQKAGAWFSYN	311							
NTDB id 115	BSU	16940	NP 389576.2	SVRLEVRRAEQLKQGN.....D	MGNKTKIKVVKNKVAPPFR	TAEVDIMYGEGISKEGEITD	LGTELDIVQKSGSWYSYE	292						
NTDB id 625	LCA	RS02525	WP 011374196.1	TVRLEVRRAEIKNGT.....D	MGNRARIKVVKNKVAPPFK	VAEVDIMYGEGISRTGELV	DMAVEKDIINKSGSWYSYG	294						
NTDB id 1313	DR	RS12030	WP 010888966.1	SVRLDVRKIG....QPTKVGND	AVANTVKIKTVKNKVAAPF	KEVELALVYGGKGFQDLS	DLVGLAADMDIINKAGSFYSYG	307						
NTDB id 1245	Cj1673c	YP 002345041.1		SVRLDVRKVA....TL.KQN	EETGNRVKIKVVKNKVAPP	FRAEFDVDFGEGLSREGEL	IDYGVKLDIVDKSGAWFSYK	294						
NTDB id 1211	C694	RS00795	WP 000963128.1	SVRIDIRRIA....SL.KQN	EQHIGNRAKIKVVKNKVAPP	FRAEFDIMFGEGISKEGEI	IDYGVKLDIVDKSGAWLSYQ	296						
NTDB id 1214	NCTC11637	00359	SQJ03206.1	SVRIDIRRIA....AL.KQN	EQHIGNRAKIKVVKNKVAPP	FRAEFDIMFGEGISKEGEI	IDYGVKLDIVDKSGAWLSYQ	296						
NTDB id 1334	RAOC	RS04870	WP 004918236.1	SVRIDIRRLS	DTGKIKDKSGEVIGNRTK	IKVVKNKVAPPFKSAEFD	IMYGEGVSKVGEILDVAT	DLDIQKSGSWFSYQ	307					
NTDB id 1389	A4U84	RS07560	WP 021112712.1	SVRLDIRRCG....VV.KDG	DEIIGSETKIKVVKNKVAPP	FREVQFDIMYGEGISRMN	ELLILAEANGFITKKS	GAWFSYD	310					
NTDB id 1130	NGFG	RS03960	WP 003688695.1	SVRLDIRRTG....SI.KKG	EEVLGNETR	VKVIKKNVAPPFRAEFD	DILYGEGISWEGELID	IGVKNDIINKSGAWYSYN	294					
NTDB id 1124	NGFG	RS03960	WP 003688695.1	SVRLDIRRTG....SI.KKG	EEVLGNETR	VKVIKKNVAPPFRAEFD	DILYGEGISWEGELID	IGVKNDIINKSGAWYSYN	294					
NTDB id 1123	OK783	RS03845	WP 003688695.1	SVRLDIRRTG....SI.KKG	EEVLGNETR	VKVIKKNVAPPFRAEFD	DILYGEGISWEGELID	IGVKNDIINKSGAWYSYN	294					
NTDB id 1427	RS	RS02760	WP 011000510.1	SVRLDIRRIG....SI.KKG	DEVVGNETKIKVVKNKVAPP	FRAEIFDILYGAGVSREGEI	IDLGVEAKVVEKSGAWYSYN	302						
NTDB id 1165	A1552VC	RS01565	WP 000344154.1	SVRLDIRRTG....AI.KEG	EEVLGNETRIKVVKNKIA	APFKEANTQIMYGQGFN	REGELIDLGVKHKMVE	EKSGAWYSYN	293					
NTDB id 1142	GTF74	RS11550	WP 000344154.1	SVRLDIRRTG....AI.KEG	EEVLGNETRIKVVKNKIA	APFKEANTQIMYGQGFN	REGELIDLGVKHKMVE	EKSGAWYSYN	293					
NTDB id 26889	KKOR	RS07195	WP 012801366.1	SVRLDIRRIG....QI.KQG	DEIVGNETR	VKVIKKNVAPPFQAEFQ	IILYGEGTSLEGEILD	WGVKHDLVEKSGAWYSYN	294					
NTDB id 1074	ABD1	RS10195	WP 000344167.1	SVRLDIRRIG....QV.KEG	DEIVGSETKIKVVKNKM	APPFKEAIFQILYGKGTN	QLGELVDLAVQQDIV	QKAGAWYSYQ	293					
NTDB id 1022	ACIAD	RS06390	WP 004925639.1	SVRLDIRRIG....QV.KEG	DEIVGSETKIKVVKNKM	APPFRAEIFQILYGKGVN	QLGELVDLAVQQNIV	QKAGAWYSYQ	293					
NTDB id 1205	PSJM300	05545	AFN77183.1	SVRLDIRRTG....AV.KEG	DEVVGS	ETRVKVVKNKVAPPFQAEFQ	IILYGKGIYRNGEIID	LGVQQGLVEKSGAWYAYK	293					
consensus				*! ! * * * ! * *	*	**	* * * * * ! * * ! ! * * ! ! * *	*	* * * * * ! * ! * * * * * * * * * *	*	* * * * * ! * ! * * * * * * * * * *	*	* * * * * ! * ! * * * * * * * * * *	*

logo

NTDB id 600 KW2 RS01765 WP 011675413.1
 NTDB id 269 KZH43 RS08665 WP 001085462.1
 NTDB id 228 SPD RS09265 WP 001085462.1
 NTDB id 194 SPR RS08825 WP 001085462.1
 NTDB id 159 SP RS09750 WP 001085462.1
 NTDB id 499 SM12261 RS08315 WP 078228268.1
 NTDB id 527 SMSK321 RS11065 WP 001085454.1
 NTDB id 408 SMU RS09530 WP 002262392.1
 NTDB id 453 Spy49 1753c ACI62003.1
 NTDB id 115 BSU 16940 NP 389576.2
 NTDB id 625 LCA RS02525 WP 011374196.1
 NTDB id 1313 DR RS12030 WP 010888966.1
 NTDB id 1245 Cj1673c YP 002345041.1
 NTDB id 1211 C694 RS00795 WP 000963128.1
 NTDB id 1214 NCTC11637 00359 SQJ03206.1
 NTDB id 1334 RAOC RS04870 WP 004918236.1
 NTDB id 1389 A4U84 RS07560 WP 021112712.1
 NTDB id 1130 NGFG RS03960 WP 003688695.1
 NTDB id 1124 NGFG RS03960 WP 003688695.1
 NTDB id 1123 OK783 RS03845 WP 003688695.1
 NTDB id 1427 RS RS02760 WP 011000510.1
 NTDB id 1165 A1552VC RS01565 WP 000344154.1
 NTDB id 1142 GTF74 RS11550 WP 000344154.1
 NTDB id 26889 KKOR RS07195 WP 012801366.1
 NTDB id 1074 ABD1 RS10195 WP 000344167.1
 NTDB id 1022 ACIAD RS06390 WP 004925639.1
 NTDB id 1205 PSJM300 05545 AFN77183.1

consensus



387
384
384
384
384
380
380
381
376
348
355
363
343
347
347
343
372
348
348
348
352
354
354
346
349
349
347

logo

	E	I	E	E	
NTDB id 600 KW2 RS01765 WP 011675413.1	387
NTDB id 269 KZH43 RS08665 WP 001085462.1	E	I	E	E	388
NTDB id 228 SPD RS09265 WP 001085462.1	E	I	E	E	388
NTDB id 194 SPR RS08825 WP 001085462.1	E	I	E	E	388
NTDB id 159 SP RS09750 WP 001085462.1	E	I	E	E	388
NTDB id 499 SM12261 RS08315 WP 078228268.1	E	I	E	E	384
NTDB id 527 SMSK321 RS11065 WP 001085454.1	E	I	E	E	384
NTDB id 408 SMU RS09530 WP 002262392.1	E	D	.	.	383
NTDB id 453 Spy49 1753c ACI62003.1	E	D	.	.	378
NTDB id 115 BSU 16940 NP 389576.2	348
NTDB id 625 LCA RS02525 WP 011374196.1	355
NTDB id 1313 DR RS12030 WP 010888966.1	363
NTDB id 1245 Cj1673c YP 002345041.1	343
NTDB id 1211 C694 RS00795 WP 000963128.1	347
NTDB id 1214 NCTC11637 00359 SQJ03206.1	347
NTDB id 1334 RAOC RS04870 WP 004918236.1	343
NTDB id 1389 A4U84 RS07560 WP 021112712.1	372
NTDB id 1130 NGFG RS03960 WP 003688695.1	348
NTDB id 1124 NGFG RS03960 WP 003688695.1	348
NTDB id 1123 OK783 RS03845 WP 003688695.1	348
NTDB id 1427 RS RS02760 WP 011000510.1	352
NTDB id 1165 A1552VC RS01565 WP 000344154.1	354
NTDB id 1142 GTF74 RS11550 WP 000344154.1	354
NTDB id 26889 KKOR RS07195 WP 012801366.1	346
NTDB id 1074 ABD1 RS10195 WP 000344167.1	349
NTDB id 1022 ACIAD RS06390 WP 004925639.1	349
NTDB id 1205 PSJM300 05545 AFN77183.1	347

consensus

 non conserved
 similar
 ≥ 50% conserved