

logo

NTDB id 24315 SPH RS08975 WP 000614540.1
 NTDB id 146 SP RS08570 WP 000614538.1
 NTDB id 216 SPD RS08205 WP 000614552.1
 NTDB id 182 SPR RS07820 WP 000614552.1
 NTDB id 257 KZH43 RS07655 WP 220041236.1
 NTDB id 384 SMU RS02325 WP 002263039.1
 NTDB id 467 HSISS4 RS06915 WP 021143821.1
 consensus



85
85
85
85
85
85
85
85

logo

NTDB id 24315 SPH RS08975 WP 000614540.1
 NTDB id 146 SP RS08570 WP 000614538.1
 NTDB id 216 SPD RS08205 WP 000614552.1
 NTDB id 182 SPR RS07820 WP 000614552.1
 NTDB id 257 KZH43 RS07655 WP 220041236.1
 NTDB id 384 SMU RS02325 WP 002263039.1
 NTDB id 467 HSISS4 RS06915 WP 021143821.1
 consensus



170
170
170
170
170
170
170
170

logo

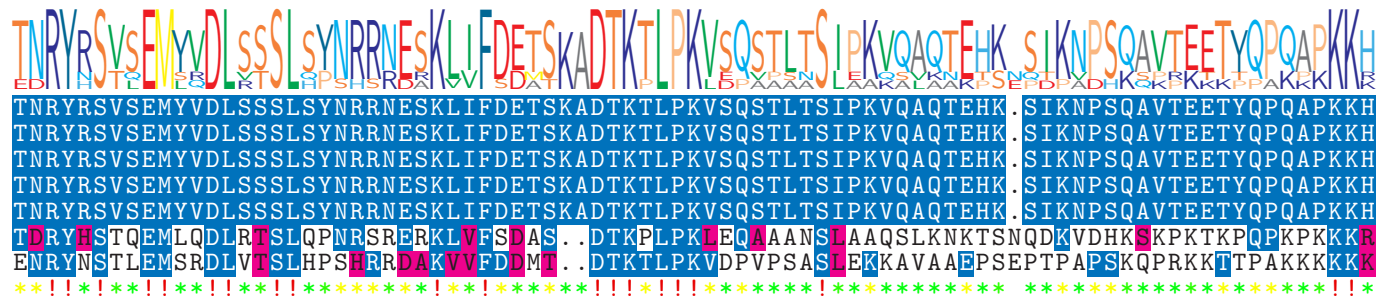
NTDB id 24315 SPH RS08975 WP 000614540.1
 NTDB id 146 SP RS08570 WP 000614538.1
 NTDB id 216 SPD RS08205 WP 000614552.1
 NTDB id 182 SPR RS07820 WP 000614552.1
 NTDB id 257 KZH43 RS07655 WP 220041236.1
 NTDB id 384 SMU RS02325 WP 002263039.1
 NTDB id 467 HSISS4 RS06915 WP 021143821.1
 consensus



255
255
255
255
255
255
255
255

logo

NTDB id 24315 SPH RS08975 WP 000614540.1
 NTDB id 146 SP RS08570 WP 000614538.1
 NTDB id 216 SPD RS08205 WP 000614552.1
 NTDB id 182 SPR RS07820 WP 000614552.1
 NTDB id 257 KZH43 RS07655 WP 220041236.1
 NTDB id 384 SMU RS02325 WP 002263039.1
 NTDB id 467 HSISS4 RS06915 WP 021143821.1
 consensus



339
339
339
339
339
338
338

logo

NTDB id 24315 SPH RS08975 WP 000614540.1
 NTDB id 146 SP RS08570 WP 000614538.1
 NTDB id 216 SPD RS08205 WP 000614552.1
 NTDB id 182 SPR RS07820 WP 000614552.1
 NTDB id 257 KZH43 RS07655 WP 220041236.1
 NTDB id 384 SMU RS02325 WP 002263039.1
 NTDB id 467 HSISS4 RS06915 WP 021143821.1
 consensus



423
423
423
423
423
423
423

logo

NTDB id 24315 SPH RS08975 WP 000614540.1
 NTDB id 146 SP RS08570 WP 000614538.1
 NTDB id 216 SPD RS08205 WP 000614552.1
 NTDB id 182 SPR RS07820 WP 000614552.1
 NTDB id 257 KZH43 RS07655 WP 220041236.1
 NTDB id 384 SMU RS02325 WP 002263039.1
 NTDB id 467 HSISS4 RS06915 WP 021143821.1
 consensus



506
506
506
506
506
503
507

logo

NTDB id 24315 SPH RS08975 WP 000614540.1
 NTDB id 146 SP RS08570 WP 000614538.1
 NTDB id 216 SPD RS08205 WP 000614552.1
 NTDB id 182 SPR RS07820 WP 000614552.1
 NTDB id 257 KZH43 RS07655 WP 220041236.1
 NTDB id 384 SMU RS02325 WP 002263039.1
 NTDB id 467 HSISS4 RS06915 WP 021143821.1
 consensus



583
583
583
583
583
585
587

logo

NTDB id 24315 SPH RS08975 WP 000614540.1
 NTDB id 146 SP RS08570 WP 000614538.1
 NTDB id 216 SPD RS08205 WP 000614552.1
 NTDB id 182 SPR RS07820 WP 000614552.1
 NTDB id 257 KZH43 RS07655 WP 220041236.1
 NTDB id 384 SMU RS02325 WP 002263039.1
 NTDB id 467 HSISS4 RS06915 WP 021143821.1
 consensus



659
659
659
659
659
616
624

non conserved
 similar
 ≥ 50% conserved