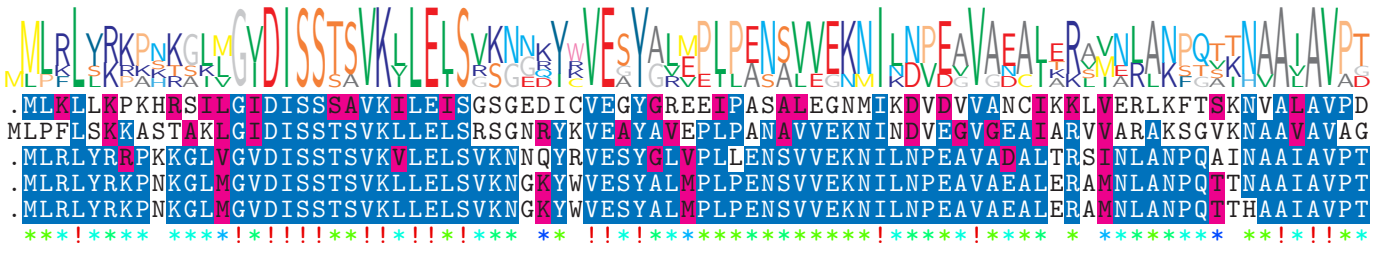


logo

NTDB id 1253 GC085 RS04835 WP 011215094.1
 NTDB id 241653 Kalk RS15660 WP 101895142.1
 NTDB id 1010 ACIAD RS15195 WP 004923715.1
 NTDB id 1084 FDQ49 RS11070 WP 004711654.1
 NTDB id 1054 ABD1 RS15870 WP 002014066.1
 consensus



84
85
84
84
84

logo

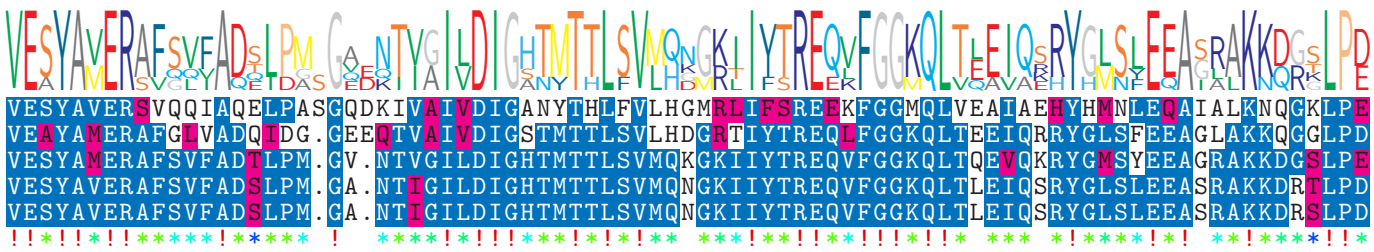
NTDB id 1253 GC085 RS04835 WP 011215094.1
 NTDB id 241653 Kalk RS15660 WP 101895142.1
 NTDB id 1010 ACIAD RS15195 WP 004923715.1
 NTDB id 1084 FDQ49 RS11070 WP 004711654.1
 NTDB id 1054 ABD1 RS15870 WP 002014066.1
 consensus



169
170
169
169
169

logo

NTDB id 1253 GC085 RS04835 WP 011215094.1
 NTDB id 241653 Kalk RS15660 WP 101895142.1
 NTDB id 1010 ACIAD RS15195 WP 004923715.1
 NTDB id 1084 FDQ49 RS11070 WP 004711654.1
 NTDB id 1054 ABD1 RS15870 WP 002014066.1
 consensus



254
254
252
252
252

logo

NTDB id 1253 GC085 RS04835 WP 011215094.1
 NTDB id 241653 Kalk RS15660 WP 101895142.1
 NTDB id 1010 ACIAD RS15195 WP 004923715.1
 NTDB id 1084 FDQ49 RS11070 WP 004711654.1
 NTDB id 1054 ABD1 RS15870 WP 002014066.1
 consensus



339
339
337
337
337

logo

NTDB id 1253 GC085 RS04835 WP 011215094.1
 NTDB id 241653 Kalk RS15660 WP 101895142.1
 NTDB id 1010 ACIAD RS15195 WP 004923715.1
 NTDB id 1084 FDQ49 RS11070 WP 004711654.1
 NTDB id 1054 ABD1 RS15870 WP 002014066.1
 consensus



354
354
353
352
352

non conserved
 similar
 $\geq 50\%$ conserved