

logo

NTDB id 146 SP RS08570 WP 000614538.1  
 NTDB id 216 SPD RS08205 WP 000614552.1  
 NTDB id 182 SPR RS07820 WP 000614552.1  
 NTDB id 257 KZH43 RS07655 WP 220041236.1  
 NTDB id 233851 BB161 RS01985 WP 000614568.1  
 NTDB id 467 HSISS4 RS06915 WP 021143821.1  
 NTDB id 384 SMU RS02325 WP 002263039.1  
 consensus



80  
80  
80  
80  
80  
80  
80

logo

NTDB id 146 SP RS08570 WP 000614538.1  
 NTDB id 216 SPD RS08205 WP 000614552.1  
 NTDB id 182 SPR RS07820 WP 000614552.1  
 NTDB id 257 KZH43 RS07655 WP 220041236.1  
 NTDB id 233851 BB161 RS01985 WP 000614568.1  
 NTDB id 467 HSISS4 RS06915 WP 021143821.1  
 NTDB id 384 SMU RS02325 WP 002263039.1  
 consensus



160  
160  
160  
160  
160  
160  
160

logo

NTDB id 146 SP RS08570 WP 000614538.1  
 NTDB id 216 SPD RS08205 WP 000614552.1  
 NTDB id 182 SPR RS07820 WP 000614552.1  
 NTDB id 257 KZH43 RS07655 WP 220041236.1  
 NTDB id 233851 BB161 RS01985 WP 000614568.1  
 NTDB id 467 HSISS4 RS06915 WP 021143821.1  
 NTDB id 384 SMU RS02325 WP 002263039.1  
 consensus



240  
240  
240  
240  
240  
240  
240

logo

NTDB id 146 SP RS08570 WP 000614538.1  
 NTDB id 216 SPD RS08205 WP 000614552.1  
 NTDB id 182 SPR RS07820 WP 000614552.1  
 NTDB id 257 KZH43 RS07655 WP 220041236.1  
 NTDB id 233851 BB161 RS01985 WP 000614568.1  
 NTDB id 467 HSISS4 RS06915 WP 021143821.1  
 NTDB id 384 SMU RS02325 WP 002263039.1  
 consensus



317  
317  
317  
317  
317  
317  
317

logo

NTDB id 146 SP RS08570 WP 000614538.1
NTDB id 216 SPD RS08205 WP 000614552.1
NTDB id 182 SPR RS07820 WP 000614552.1
NTDB id 257 KZH43 RS07655 WP 220041236.1
NTDB id 233851 BB161 RS01985 WP 000614568.1
NTDB id 467 HSISS4 RS06915 WP 021143821.1
NTDB id 384 SMU RS02325 WP 002263039.1

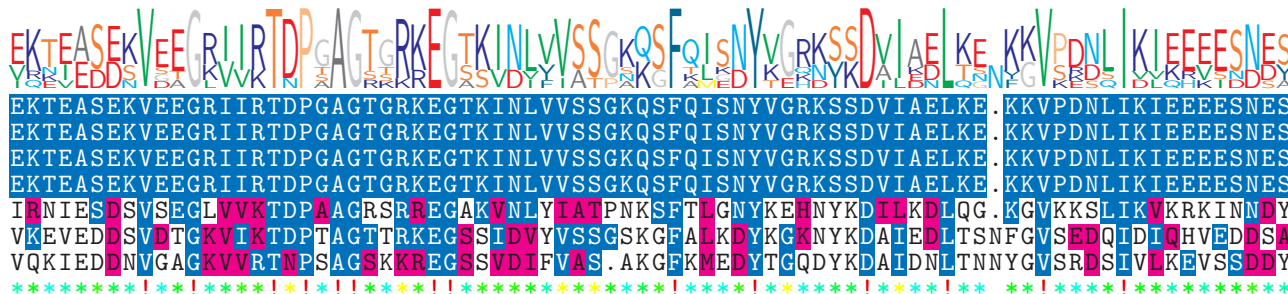


396
396
396
396
398
396
396

consensus

logo

NTDB id 146 SP RS08570 WP 000614538.1
NTDB id 216 SPD RS08205 WP 000614552.1
NTDB id 182 SPR RS07820 WP 000614552.1
NTDB id 257 KZH43 RS07655 WP 220041236.1
NTDB id 233851 BB161 RS01985 WP 000614568.1
NTDB id 467 HSISS4 RS06915 WP 021143821.1
NTDB id 384 SMU RS02325 WP 002263039.1



475
475
475
475
477
476
475

consensus

logo

NTDB id 146 SP RS08570 WP 000614538.1
NTDB id 216 SPD RS08205 WP 000614552.1
NTDB id 182 SPR RS07820 WP 000614552.1
NTDB id 257 KZH43 RS07655 WP 220041236.1
NTDB id 233851 BB161 RS01985 WP 000614568.1
NTDB id 467 HSISS4 RS06915 WP 021143821.1
NTDB id 384 SMU RS02325 WP 002263039.1

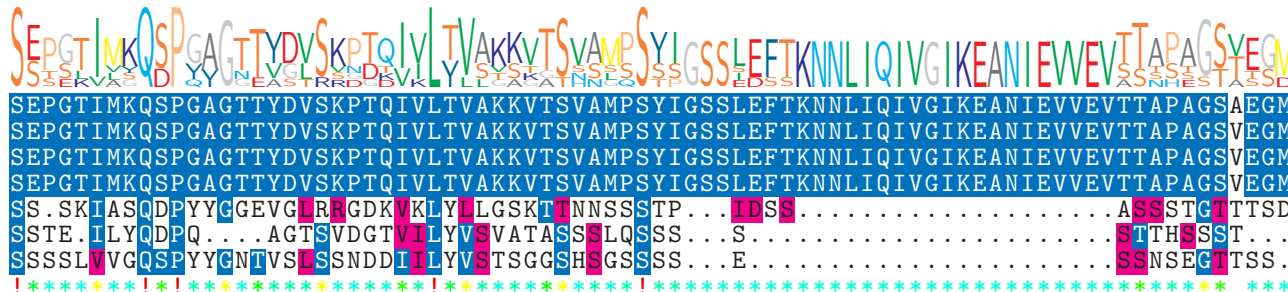


546
546
546
546
555
555
548

consensus

logo

NTDB id 146 SP RS08570 WP 000614538.1
NTDB id 216 SPD RS08205 WP 000614552.1
NTDB id 182 SPR RS07820 WP 000614552.1
NTDB id 257 KZH43 RS07655 WP 220041236.1
NTDB id 233851 BB161 RS01985 WP 000614568.1
NTDB id 467 HSISS4 RS06915 WP 021143821.1
NTDB id 384 SMU RS02325 WP 002263039.1



626
626
626
626
626
611
601
601

consensus

logo

NTDB id 146 SP RS08570 WP 000614538.1  
 NTDB id 216 SPD RS08205 WP 000614552.1  
 NTDB id 182 SPR RS07820 WP 000614552.1  
 NTDB id 257 KZH43 RS07655 WP 220041236.1  
 NTDB id 233851 BB161 RS01985 WP 000614568.1  
 NTDB id 467 HSISS4 RS06915 WP 021143821.1  
 NTDB id 384 SMU RS02325 WP 002263039.1  
 consensus



non conserved  
 similar  
 ≥ 50% conserved