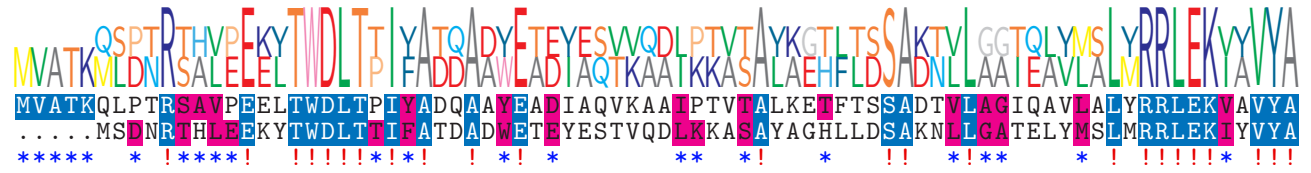


logo

NTDB id 231353 S102022 RS09685 WP 011101688.1
NTDB id 480 HSISS4 RS02090 WP 002890133.1
consensus



80
75

logo

NTDB id 231353 S102022 RS09685 WP 011101688.1
NTDB id 480 HSISS4 RS02090 WP 002890133.1
consensus



160
155

logo

NTDB id 231353 S102022 RS09685 WP 011101688.1
NTDB id 480 HSISS4 RS02090 WP 002890133.1
consensus



240
235

logo

NTDB id 231353 S102022 RS09685 WP 011101688.1
NTDB id 480 HSISS4 RS02090 WP 002890133.1
consensus



320
314

logo

NTDB id 231353 S102022 RS09685 WP 011101688.1
NTDB id 480 HSISS4 RS02090 WP 002890133.1
consensus



400
394

logo

NTDB id 231353 S102022 RS09685 WP 011101688.1
NTDB id 480 HSISS4 RS02090 WP 002890133.1
consensus



480
474

logo

NTDB id 231353 S102022 RS09685 WP 011101688.1
NTDB id 480 HSISS4 RS02090 WP 002890133.1
consensus



560
554

logo

NTDB id 231353 S102022 RS09685 WP 011101688.1
NTDB id 480 HSISS4 RS02090 WP 002890133.1
consensus

