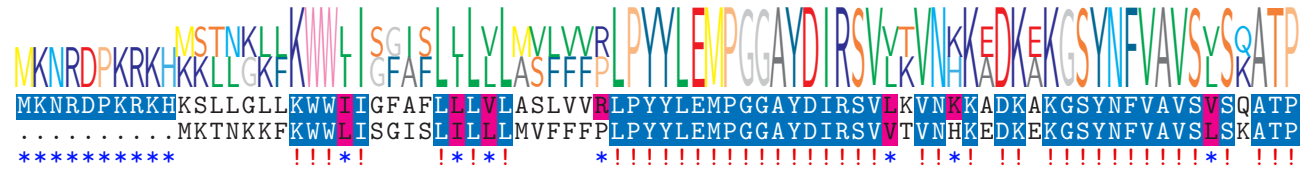


logo

NTDB id 219453 B2G84 RS02740 WP 079218618.1
NTDB id 360 SMU RS02495 WP 002262039.1
consensus



80
70

logo

NTDB id 219453 B2G84 RS02740 WP 079218618.1
NTDB id 360 SMU RS02495 WP 002262039.1
consensus



160
150

logo

NTDB id 219453 B2G84 RS02740 WP 079218618.1
NTDB id 360 SMU RS02495 WP 002262039.1
consensus



240
230

logo

NTDB id 219453 B2G84 RS02740 WP 079218618.1
NTDB id 360 SMU RS02495 WP 002262039.1
consensus



320
310

logo

NTDB id 219453 B2G84 RS02740 WP 079218618.1
NTDB id 360 SMU RS02495 WP 002262039.1
consensus



357
346

non conserved
 similar
 ≥ 50% conserved