

logo

NTDB id 213546 BWI20 RS03385 WP 003722312.1  
NTDB id 480 HSISS4 RS02090 WP 002890133.1  
consensus



80  
75

logo

NTDB id 213546 BWI20 RS03385 WP 003722312.1  
NTDB id 480 HSISS4 RS02090 WP 002890133.1  
consensus



160  
155

logo

NTDB id 213546 BWI20 RS03385 WP 003722312.1  
NTDB id 480 HSISS4 RS02090 WP 002890133.1  
consensus



240  
235

logo

NTDB id 213546 BWI20 RS03385 WP 003722312.1  
NTDB id 480 HSISS4 RS02090 WP 002890133.1  
consensus



320  
314

logo

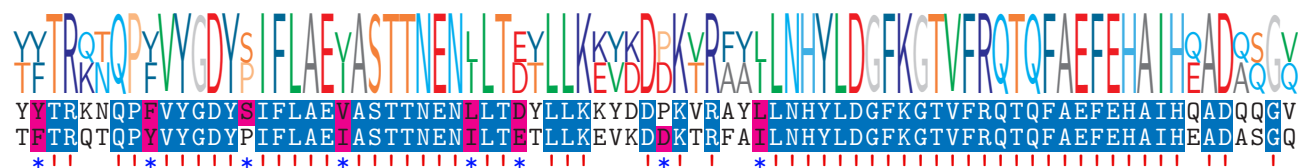
NTDB id 213546 BWI20 RS03385 WP 003722312.1  
NTDB id 480 HSISS4 RS02090 WP 002890133.1  
consensus



400  
394

logo

NTDB id 213546 BWI20 RS03385 WP 003722312.1  
NTDB id 480 HSISS4 RS02090 WP 002890133.1  
consensus



480  
474

logo

NTDB id 213546 BWI20 RS03385 WP 003722312.1  
NTDB id 480 HSISS4 RS02090 WP 002890133.1  
consensus



560  
554

logo

NTDB id 213546 BWI20 RS03385 WP 003722312.1

NTDB id 480 HSISS4 RS02090 WP 002890133.1

consensus



601

601

- non conserved
- similar
- $\geq 50\%$  conserved