

logo

NTDB id 1045 HON27 RS16330 WP 168727019.1
NTDB id 213112 BVV13 RS16770 WP 024743350.1
NTDB id 1473 PAKAF RS24000 WP 003094694.1

consensus



61
80
59

logo

NTDB id 1045 HON27 RS16330 WP 168727019.1
NTDB id 213112 BVV13 RS16770 WP 024743350.1
NTDB id 1473 PAKAF RS24000 WP 003094694.1

consensus



139
160
134

logo

NTDB id 1045 HON27 RS16330 WP 168727019.1
NTDB id 213112 BVV13 RS16770 WP 024743350.1
NTDB id 1473 PAKAF RS24000 WP 003094694.1

consensus



219
240
214

logo

NTDB id 1045 HON27 RS16330 WP 168727019.1
NTDB id 213112 BVV13 RS16770 WP 024743350.1
NTDB id 1473 PAKAF RS24000 WP 003094694.1

consensus

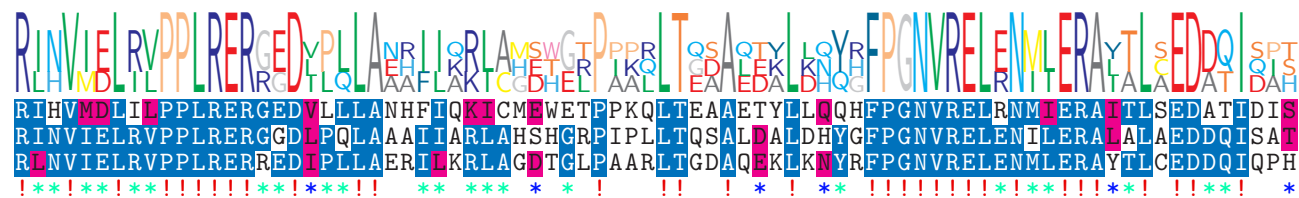


299
320
294

logo

NTDB id 1045 HON27 RS16330 WP 168727019.1
NTDB id 213112 BVV13 RS16770 WP 024743350.1
NTDB id 1473 PAKAF RS24000 WP 003094694.1

consensus

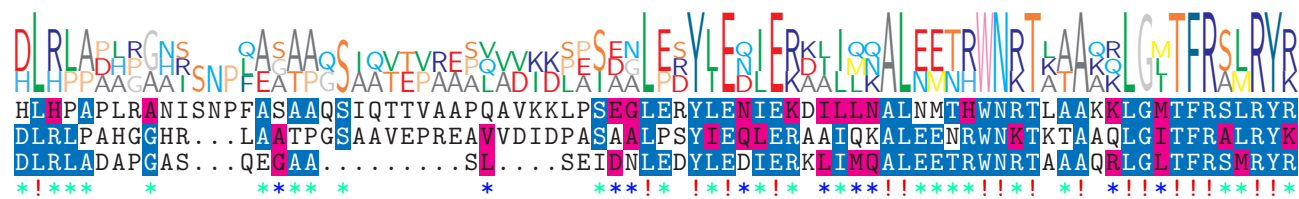


379
400
374

logo

NTDB id 1045 HON27 RS16330 WP 168727019.1
NTDB id 213112 BVV13 RS16770 WP 024743350.1
NTDB id 1473 PAKAF RS24000 WP 003094694.1

consensus



459
477
438

logo

NTDB id 1045 HON27 RS16330 WP 168727019.1
NTDB id 213112 BVV13 RS16770 WP 024743350.1
NTDB id 1473 PAKAF RS24000 WP 003094694.1
consensus



non conserved
 similar
 ≥ 50% conserved