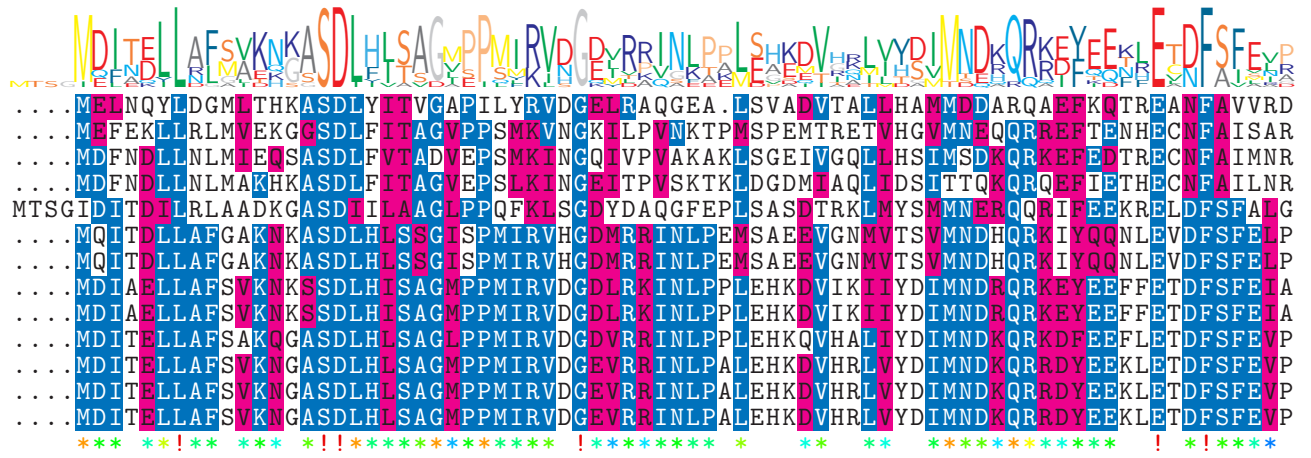


logo

NTDB id 1177 A1552VC RS01165 WP 000422572.1  
 NTDB id 1203 PSJM300 01605 AFN76401.1  
 NTDB id 212810 BVL33 RS06320 WP 004913902.1  
 NTDB id 1019 ACIAD RS04205 WP 004922051.1  
 NTDB id 1307 DR RS10055 WP 010888596.1  
 NTDB id 1116 NGFG RS10615 WP 003690200.1  
 NTDB id 1086 NMV RS00245 WP 002218487.1  
 NTDB id 1283 ACE17W RS02630 WP 010947729.1  
 NTDB id 1259 GC085 RS10305 WP 010947729.1  
 NTDB id 1194 PAKAF RS01995 WP 003084552.1  
 NTDB id 1081 FDQ49 RS05335 WP 006581387.1  
 NTDB id 1060 ABD1 RS04380 WP 000355489.1  
 NTDB id 1040 HON27 RS13360 WP 000355489.1



75  
76  
76  
76  
80  
76  
76  
76  
76  
76  
76  
76  
76  
76  
76  
76  
76  
76

consensus

logo

NTDB id 1177 A1552VC RS01165 WP 000422572.1  
 NTDB id 1203 PSJM300 01605 AFN76401.1  
 NTDB id 212810 BVL33 RS06320 WP 004913902.1  
 NTDB id 1019 ACIAD RS04205 WP 004922051.1  
 NTDB id 1307 DR RS10055 WP 010888596.1  
 NTDB id 1116 NGFG RS10615 WP 003690200.1  
 NTDB id 1086 NMV RS00245 WP 002218487.1  
 NTDB id 1283 ACE17W RS02630 WP 010947729.1  
 NTDB id 1259 GC085 RS10305 WP 010947729.1  
 NTDB id 1194 PAKAF RS01995 WP 003084552.1  
 NTDB id 1081 FDQ49 RS05335 WP 006581387.1  
 NTDB id 1060 ABD1 RS04380 WP 000355489.1  
 NTDB id 1040 HON27 RS13360 WP 000355489.1

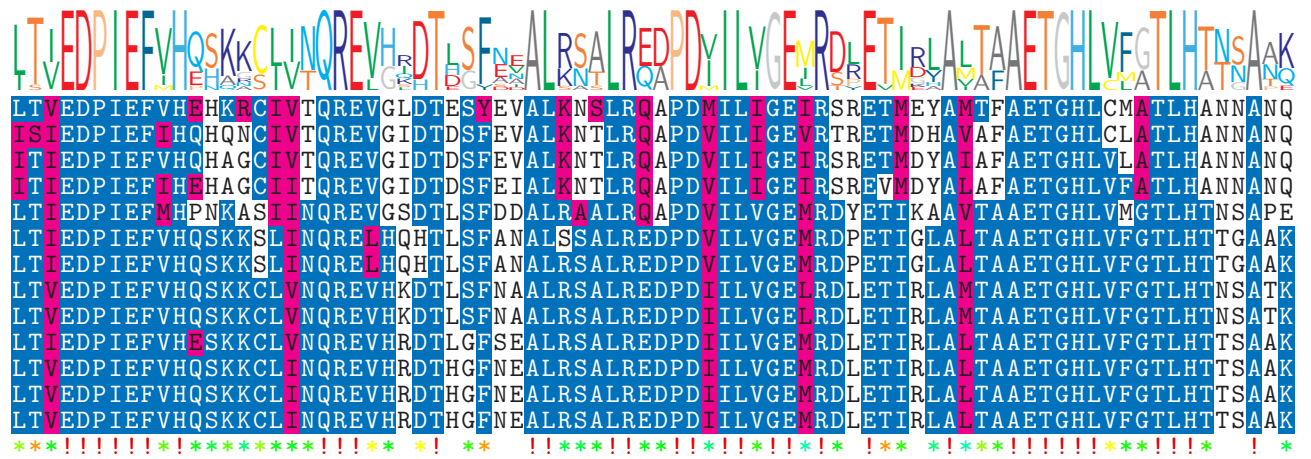


153  
155  
156  
156  
159  
155  
155  
155  
155  
155  
155  
155  
155  
155  
155  
155  
155

consensus

logo

NTDB id 1177 A1552VC RS01165 WP 000422572.1  
 NTDB id 1203 PSJM300 01605 AFN76401.1  
 NTDB id 212810 BVL33 RS06320 WP 004913902.1  
 NTDB id 1019 ACIAD RS04205 WP 004922051.1  
 NTDB id 1307 DR RS10055 WP 010888596.1  
 NTDB id 1116 NGFG RS10615 WP 003690200.1  
 NTDB id 1086 NMV RS00245 WP 002218487.1  
 NTDB id 1283 ACE17W RS02630 WP 010947729.1  
 NTDB id 1259 GC085 RS10305 WP 010947729.1  
 NTDB id 1194 PAKAF RS01995 WP 003084552.1  
 NTDB id 1081 FDQ49 RS05335 WP 006581387.1  
 NTDB id 1060 ABD1 RS04380 WP 000355489.1  
 NTDB id 1040 HON27 RS13360 WP 000355489.1

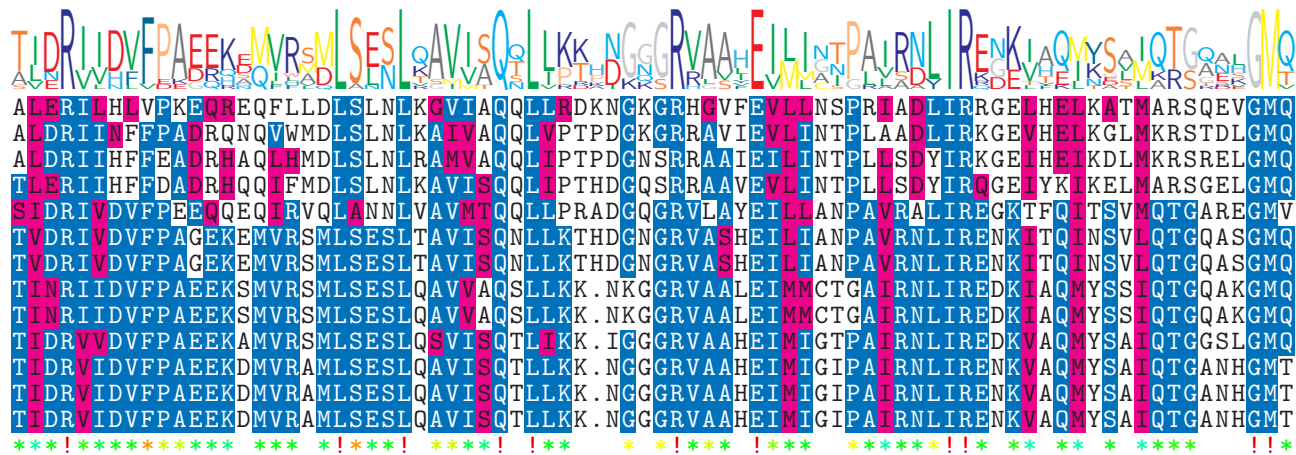


233  
235  
236  
236  
239  
235  
235  
235  
235  
235  
235  
235  
235  
235  
235  
235  
235

consensus

logo

NTDB id 1177 A1552VC RS01165 WP 000422572.1  
 NTDB id 1203 PSJM300 01605 AFN76401.1  
 NTDB id 212810 BVL33 RS06320 WP 004913902.1  
 NTDB id 1019 ACIAD RS04205 WP 004922051.1  
 NTDB id 1307 DR RS10055 WP 010888596.1  
 NTDB id 1116 NGFG RS10615 WP 003690200.1  
 NTDB id 1086 NMV RS00245 WP 002218487.1  
 NTDB id 1283 ACE17W RS02630 WP 010947729.1  
 NTDB id 1259 GC085 RS10305 WP 010947729.1  
 NTDB id 1194 PAKAF RS01995 WP 003084552.1  
 NTDB id 1081 FDQ49 RS05335 WP 006581387.1  
 NTDB id 1060 ABD1 RS04380 WP 000355489.1  
 NTDB id 1040 HON27 RS13360 WP 000355489.1  
 consensus



313  
315  
316  
316  
319  
315  
315  
315  
314  
314  
314  
314  
314  
314  
314  
314

logo

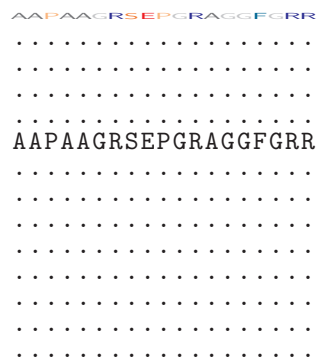
NTDB id 1177 A1552VC RS01165 WP 000422572.1  
 NTDB id 1203 PSJM300 01605 AFN76401.1  
 NTDB id 212810 BVL33 RS06320 WP 004913902.1  
 NTDB id 1019 ACIAD RS04205 WP 004922051.1  
 NTDB id 1307 DR RS10055 WP 010888596.1  
 NTDB id 1116 NGFG RS10615 WP 003690200.1  
 NTDB id 1086 NMV RS00245 WP 002218487.1  
 NTDB id 1283 ACE17W RS02630 WP 010947729.1  
 NTDB id 1259 GC085 RS10305 WP 010947729.1  
 NTDB id 1194 PAKAF RS01995 WP 003084552.1  
 NTDB id 1081 FDQ49 RS05335 WP 006581387.1  
 NTDB id 1060 ABD1 RS04380 WP 000355489.1  
 NTDB id 1040 HON27 RS13360 WP 000355489.1  
 consensus



368  
381  
372  
383  
399  
347  
347  
344  
344  
344  
344  
345  
345  
345

logo

NTDB id 1177 A1552VC RS01165 WP 000422572.1  
 NTDB id 1203 PSJM300 01605 AFN76401.1  
 NTDB id 212810 BVL33 RS06320 WP 004913902.1  
 NTDB id 1019 ACIAD RS04205 WP 004922051.1  
 NTDB id 1307 DR RS10055 WP 010888596.1  
 NTDB id 1116 NGFG RS10615 WP 003690200.1  
 NTDB id 1086 NMV RS00245 WP 002218487.1  
 NTDB id 1283 ACE17W RS02630 WP 010947729.1  
 NTDB id 1259 GC085 RS10305 WP 010947729.1  
 NTDB id 1194 PAKAF RS01995 WP 003084552.1  
 NTDB id 1081 FDQ49 RS05335 WP 006581387.1  
 NTDB id 1060 ABD1 RS04380 WP 000355489.1  
 NTDB id 1040 HON27 RS13360 WP 000355489.1  
 consensus



368  
381  
372  
383  
418  
347  
347  
344  
344  
344  
345  
345  
345

 non conserved  
 similar  
  $\geq 50\%$  conserved