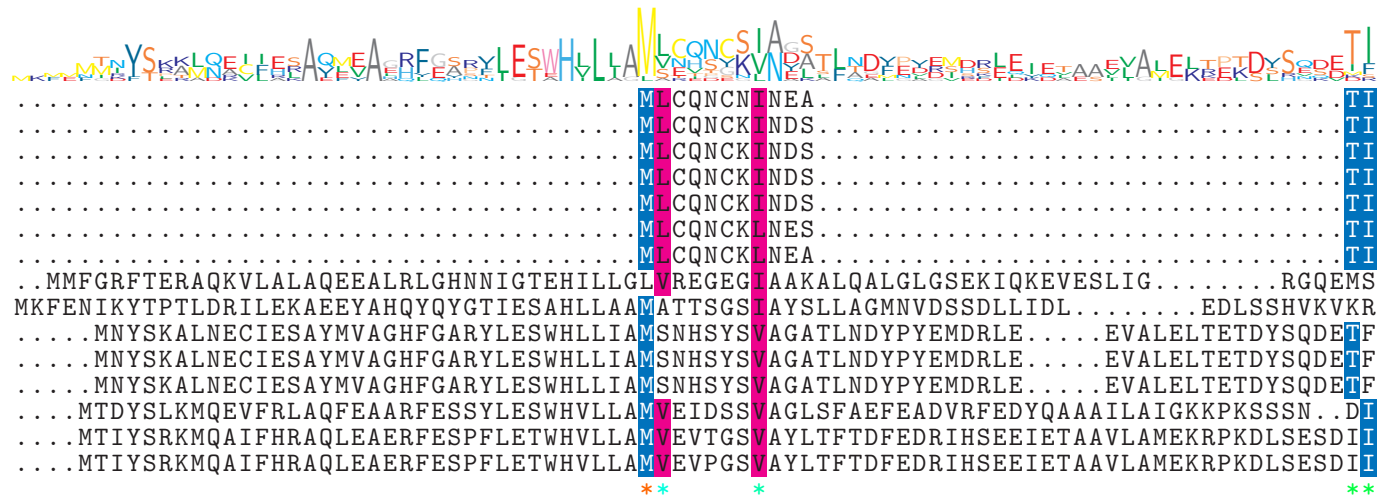


logo

NTDB id 601 KW2 RS02615 WP 021036805.1
 NTDB id 281 KZH43 RS03550 WP 000882517.1
 NTDB id 245 SPD RS03860 WP 000882517.1
 NTDB id 243 SPR RS03635 WP 000882517.1
 NTDB id 241 SP RS04015 WP 000882523.1
 NTDB id 20180 DN94 02735 AHX74644.1
 NTDB id 378 SMU RS02690 WP 002263569.1
 NTDB id 85 BSU 00860 NP 387967.1
 NTDB id 610 V4T04 RS10165 WP 012897346.1
 NTDB id 290 KZH43 RS10025 WP 001109677.1
 NTDB id 289 SPD RS10700 WP 001109677.1
 NTDB id 287 SP RS11210 WP 001109712.1
 NTDB id 377 SMU RS09275 WP 002262344.1
 NTDB id 297 STER RS00545 WP 011680614.1
 NTDB id 329 STU RS10020 WP 011225298.1
 consensus



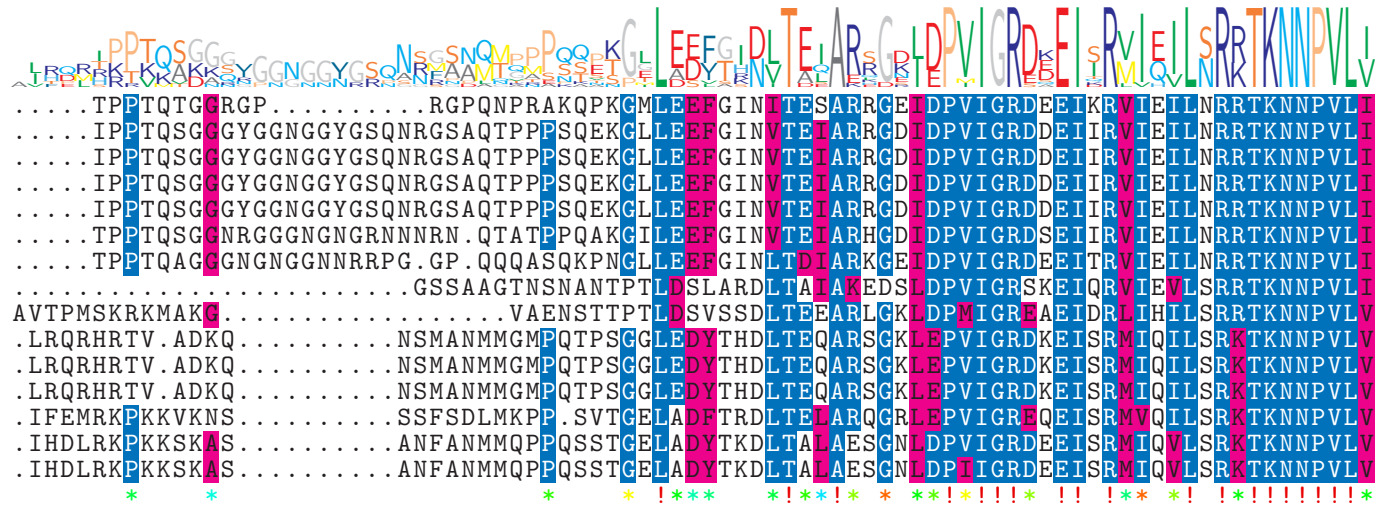
logo

NTDB id 601 KW2 RS02615 WP 021036805.1
 NTDB id 281 KZH43 RS03550 WP 000882517.1
 NTDB id 245 SPD RS03860 WP 000882517.1
 NTDB id 243 SPR RS03635 WP 000882517.1
 NTDB id 241 SP RS04015 WP 000882523.1
 NTDB id 20180 DN94 02735 AHX74644.1
 NTDB id 378 SMU RS02690 WP 002263569.1
 NTDB id 85 BSU 00860 NP 387967.1
 NTDB id 610 V4T04 RS10165 WP 012897346.1
 NTDB id 290 KZH43 RS10025 WP 001109677.1
 NTDB id 289 SPD RS10700 WP 001109677.1
 NTDB id 287 SP RS11210 WP 001109712.1
 NTDB id 377 SMU RS09275 WP 002262344.1
 NTDB id 297 STER RS00545 WP 011680614.1
 NTDB id 329 STU RS10020 WP 011225298.1
 consensus



logo

NTDB id 601 KW2 RS02615 WP 021036805.1
 NTDB id 281 KZH43 RS03550 WP 000882517.1
 NTDB id 245 SPD RS03860 WP 000882517.1
 NTDB id 243 SPR RS03635 WP 000882517.1
 NTDB id 241 SP RS04015 WP 000882523.1
 NTDB id 20180 DN94 02735 AHX74644.1
 NTDB id 378 SMU RS02690 WP 002263569.1
 NTDB id 85 BSU 00860 NP 387967.1
 NTDB id 610 V4T04 RS10165 WP 012897346.1
 NTDB id 290 KZH43 RS10025 WP 001109677.1
 NTDB id 289 SPD RS10700 WP 001109677.1
 NTDB id 287 SP RS11210 WP 001109712.1
 NTDB id 377 SMU RS09275 WP 002262344.1
 NTDB id 297 STER RS00545 WP 011680614.1
 NTDB id 329 STU RS10020 WP 011225298.1
 consensus



151
157
157
157
157
161
158
207
220
233
233
233
237
240
240

logo

NTDB id 601 KW2 RS02615 WP 021036805.1
 NTDB id 281 KZH43 RS03550 WP 000882517.1
 NTDB id 245 SPD RS03860 WP 000882517.1
 NTDB id 243 SPR RS03635 WP 000882517.1
 NTDB id 241 SP RS04015 WP 000882523.1
 NTDB id 20180 DN94 02735 AHX74644.1
 NTDB id 378 SMU RS02690 WP 002263569.1
 NTDB id 85 BSU 00860 NP 387967.1
 NTDB id 610 V4T04 RS10165 WP 012897346.1
 NTDB id 290 KZH43 RS10025 WP 001109677.1
 NTDB id 289 SPD RS10700 WP 001109677.1
 NTDB id 287 SP RS11210 WP 001109712.1
 NTDB id 377 SMU RS09275 WP 002262344.1
 NTDB id 297 STER RS00545 WP 011680614.1
 NTDB id 329 STU RS10020 WP 011225298.1
 consensus



236
242
242
242
242
246
243
291
305
318
318
318
322
325
325

logo

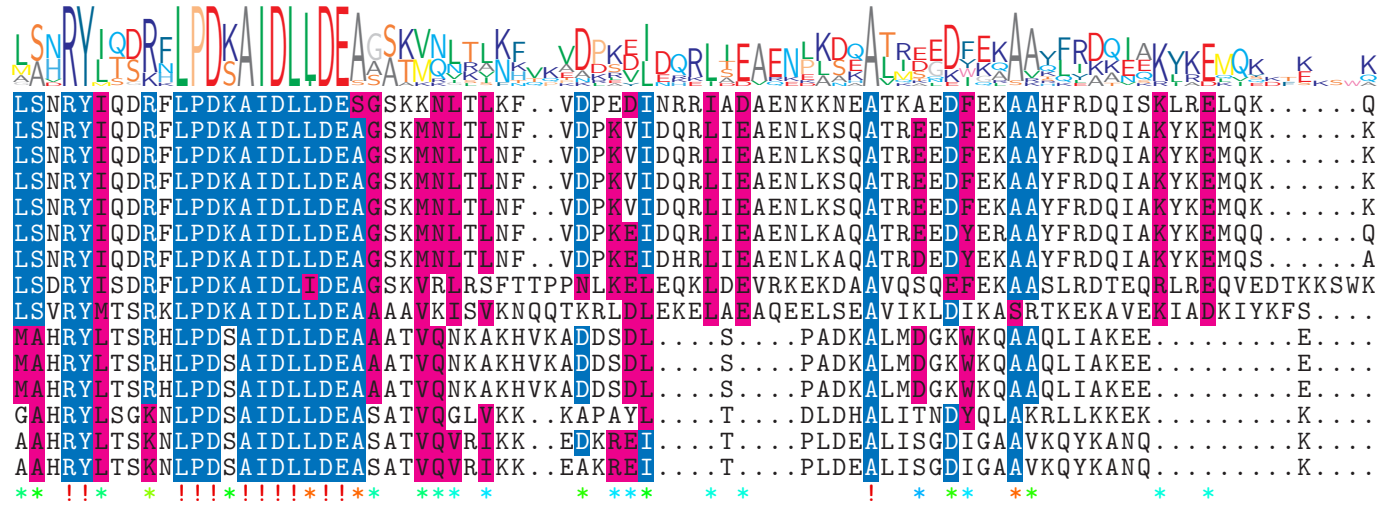
NTDB id 601 KW2 RS02615 WP 021036805.1
 NTDB id 281 KZH43 RS03550 WP 000882517.1
 NTDB id 245 SPD RS03860 WP 000882517.1
 NTDB id 243 SPR RS03635 WP 000882517.1
 NTDB id 241 SP RS04015 WP 000882523.1
 NTDB id 20180 DN94 02735 AHX74644.1
 NTDB id 378 SMU RS02690 WP 002263569.1
 NTDB id 85 BSU 00860 NP 387967.1
 NTDB id 610 V4T04 RS10165 WP 012897346.1
 NTDB id 290 KZH43 RS10025 WP 001109677.1
 NTDB id 289 SPD RS10700 WP 001109677.1
 NTDB id 287 SP RS11210 WP 001109712.1
 NTDB id 377 SMU RS09275 WP 002262344.1
 NTDB id 297 STER RS00545 WP 011680614.1
 NTDB id 329 STU RS10020 WP 011225298.1
 consensus



320
326
326
326
326
330
327
376
390
403
403
403
407
410
410

logo

NTDB id 601 KW2 RS02615 WP 021036805.1
 NTDB id 281 KZH43 RS03550 WP 000882517.1
 NTDB id 245 SPD RS03860 WP 000882517.1
 NTDB id 243 SPR RS03635 WP 000882517.1
 NTDB id 241 SP RS04015 WP 000882523.1
 NTDB id 20180 DN94 02735 AHX74644.1
 NTDB id 378 SMU RS02690 WP 002263569.1
 NTDB id 85 BSU 00860 NP 387967.1
 NTDB id 610 V4T04 RS10165 WP 012897346.1
 NTDB id 290 KZH43 RS10025 WP 001109677.1
 NTDB id 289 SPD RS10700 WP 001109677.1
 NTDB id 287 SP RS11210 WP 001109712.1
 NTDB id 377 SMU RS09275 WP 002262344.1
 NTDB id 297 STER RS00545 WP 011680614.1
 NTDB id 329 STU RS10020 WP 011225298.1
 consensus



397
403
403
403
403
407
404
461
471
467
467
467
469
472
472

logo



NTDB id 601 KW2 RS02615 WP 021036805.1	ISNQTQETAETTDEEVPAE	748
NTDB id 281 KZH43 RS03550 WP 000882517.1	QIKSAKKAIEVKSSEKEK..	752
NTDB id 245 SPD RS03860 WP 000882517.1	QIKSAKKAIEVKSSEKEK..	752
NTDB id 243 SPR RS03635 WP 000882517.1	QIKSAKKAIEVKSSEKEK..	752
NTDB id 241 SP RS04015 WP 000882523.1	QIKSAKKAIEVKSSEKEK..	752
NTDB id 20180 DN94 02735 AHX74644.1	IIKSSKKTEESTKG.....	753
NTDB id 378 SMU RS02690 WP 002263569.1	VIKASNKVETVTKATSD..	753
NTDB id 85 BSU 00860 NP 387967.1	VVKTTAKTN.....	810
NTDB id 610 V4T04 RS10165 WP 012897346.1	KIAQIV.....	816
NTDB id 290 KZH43 RS10025 WP 001109677.1	KFDIA.....	810
NTDB id 289 SPD RS10700 WP 001109677.1	KFDIA.....	810
NTDB id 287 SP RS11210 WP 001109712.1	KFDIA.....	810
NTDB id 377 SMU RS09275 WP 002262344.1	KFDIV.....	813
NTDB id 297 STER RS00545 WP 011680614.1	TFTVV.....	816
NTDB id 329 STU RS10020 WP 011225298.1	TFTVV.....	816
consensus		

X non conserved
X similar
X $\geq 50\%$ conserved