

logo

NTDB id 1356 HI 0297 AAC21961.1
NTDB id 1367 NTHI RS01945 WP 011271971.1
NTDB id 199737 BG590 RS05060 WP 006248403.1
NTDB id 1385 A4U84 RS08520 WP 005711777.1
consensus



79
79
80
80

logo

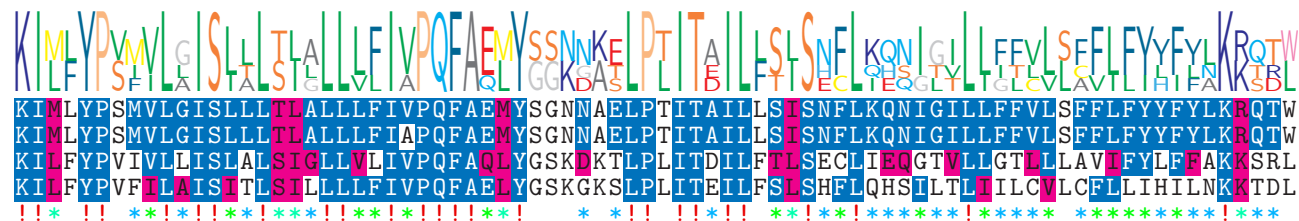
NTDB id 1356 HI 0297 AAC21961.1
NTDB id 1367 NTHI RS01945 WP 011271971.1
NTDB id 199737 BG590 RS05060 WP 006248403.1
NTDB id 1385 A4U84 RS08520 WP 005711777.1
consensus



159
159
160
160

logo

NTDB id 1356 HI 0297 AAC21961.1
NTDB id 1367 NTHI RS01945 WP 011271971.1
NTDB id 199737 BG590 RS05060 WP 006248403.1
NTDB id 1385 A4U84 RS08520 WP 005711777.1
consensus



239
239
240
240

logo

NTDB id 1356 HI 0297 AAC21961.1
NTDB id 1367 NTHI RS01945 WP 011271971.1
NTDB id 199737 BG590 RS05060 WP 006248403.1
NTDB id 1385 A4U84 RS08520 WP 005711777.1
consensus



319
319
311
311

logo

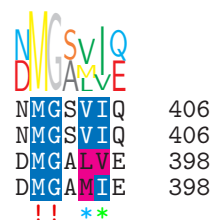
NTDB id 1356 HI 0297 AAC21961.1
NTDB id 1367 NTHI RS01945 WP 011271971.1
NTDB id 199737 BG590 RS05060 WP 006248403.1
NTDB id 1385 A4U84 RS08520 WP 005711777.1
consensus



399
399
391
391

logo

NTDB id 1356 HI 0297 AAC21961.1
NTDB id 1367 NTHI RS01945 WP 011271971.1
NTDB id 199737 BG590 RS05060 WP 006248403.1
NTDB id 1385 A4U84 RS08520 WP 005711777.1
consensus



NMGSVIQ 406
NMGSVIQ 406
DMGALVE 398
DMGAMIE 398
!! **

 non conserved
 similar
 $\geq 50\%$ conserved