

logo

NTDB id 189709 BCV53 RS07425 WP 003252325.1
NTDB id 480 HSISS4 RS02090 WP 002890133.1
consensus



80
72

logo

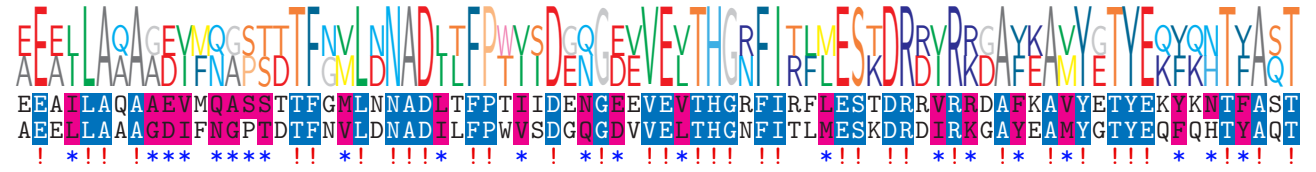
NTDB id 189709 BCV53 RS07425 WP 003252325.1
NTDB id 480 HSISS4 RS02090 WP 002890133.1
consensus



160
152

logo

NTDB id 189709 BCV53 RS07425 WP 003252325.1
NTDB id 480 HSISS4 RS02090 WP 002890133.1
consensus



240
232

logo

NTDB id 189709 BCV53 RS07425 WP 003252325.1
NTDB id 480 HSISS4 RS02090 WP 002890133.1
consensus



320
311

logo

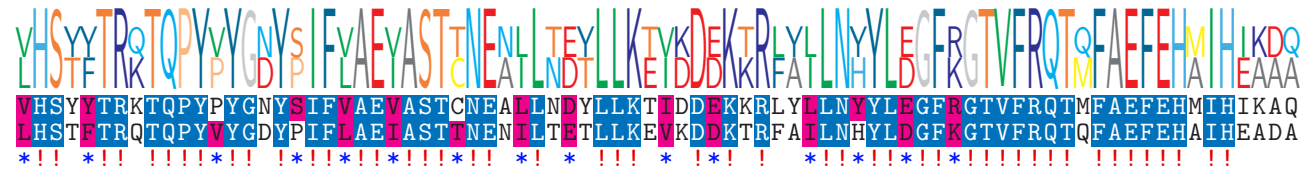
NTDB id 189709 BCV53 RS07425 WP 003252325.1
NTDB id 480 HSISS4 RS02090 WP 002890133.1
consensus



400
391

logo

NTDB id 189709 BCV53 RS07425 WP 003252325.1
NTDB id 480 HSISS4 RS02090 WP 002890133.1
consensus



480
471

logo

NTDB id 189709 BCV53 RS07425 WP 003252325.1
NTDB id 480 HSISS4 RS02090 WP 002890133.1
consensus



560
551

logo

NTDB id 189709 BCV53 RS07425 WP 003252325.1

NTDB id 480 HSISS4 RS02090 WP 002890133.1

consensus



604

601

- non conserved
- similar
- ≥ 50% conserved