

logo

NTDB id 146 SP RS08570 WP 000614538.1  
 NTDB id 216 SPD RS08205 WP 000614552.1  
 NTDB id 182 SPR RS07820 WP 000614552.1  
 NTDB id 257 KZH43 RS07655 WP 220041236.1  
 NTDB id 384 SMU RS02325 WP 002263039.1  
 NTDB id 188274 BAY21 RS07665 WP 011226292.1  
 NTDB id 467 HSISS4 RS06915 WP 021143821.1  
 consensus



80  
80  
80  
80  
80  
80  
80

logo

NTDB id 146 SP RS08570 WP 000614538.1  
 NTDB id 216 SPD RS08205 WP 000614552.1  
 NTDB id 182 SPR RS07820 WP 000614552.1  
 NTDB id 257 KZH43 RS07655 WP 220041236.1  
 NTDB id 384 SMU RS02325 WP 002263039.1  
 NTDB id 188274 BAY21 RS07665 WP 011226292.1  
 NTDB id 467 HSISS4 RS06915 WP 021143821.1  
 consensus



160  
160  
160  
160  
160  
160  
160

logo

NTDB id 146 SP RS08570 WP 000614538.1  
 NTDB id 216 SPD RS08205 WP 000614552.1  
 NTDB id 182 SPR RS07820 WP 000614552.1  
 NTDB id 257 KZH43 RS07655 WP 220041236.1  
 NTDB id 384 SMU RS02325 WP 002263039.1  
 NTDB id 188274 BAY21 RS07665 WP 011226292.1  
 NTDB id 467 HSISS4 RS06915 WP 021143821.1  
 consensus



240  
240  
240  
240  
240  
240  
240

logo

NTDB id 146 SP RS08570 WP 000614538.1  
 NTDB id 216 SPD RS08205 WP 000614552.1  
 NTDB id 182 SPR RS07820 WP 000614552.1  
 NTDB id 257 KZH43 RS07655 WP 220041236.1  
 NTDB id 384 SMU RS02325 WP 002263039.1  
 NTDB id 188274 BAY21 RS07665 WP 011226292.1  
 NTDB id 467 HSISS4 RS06915 WP 021143821.1  
 consensus



319  
319  
319  
319  
319  
318  
317  
318

logo

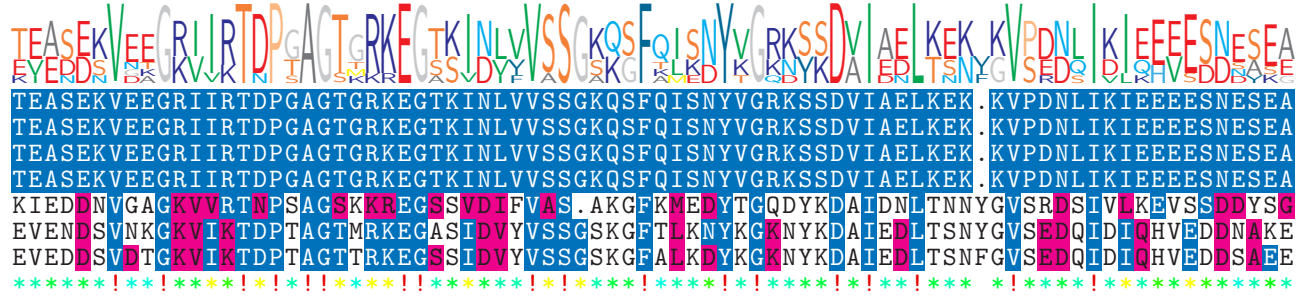
NTDB id 146 SP RS08570 WP 000614538.1  
 NTDB id 216 SPD RS08205 WP 000614552.1  
 NTDB id 182 SPR RS07820 WP 000614552.1  
 NTDB id 257 KZH43 RS07655 WP 220041236.1  
 NTDB id 384 SMU RS02325 WP 002263039.1  
 NTDB id 188274 BAY21 RS07665 WP 011226292.1  
 NTDB id 467 HSISS4 RS06915 WP 021143821.1  
 consensus



398  
398  
398  
398  
398  
395  
398

logo

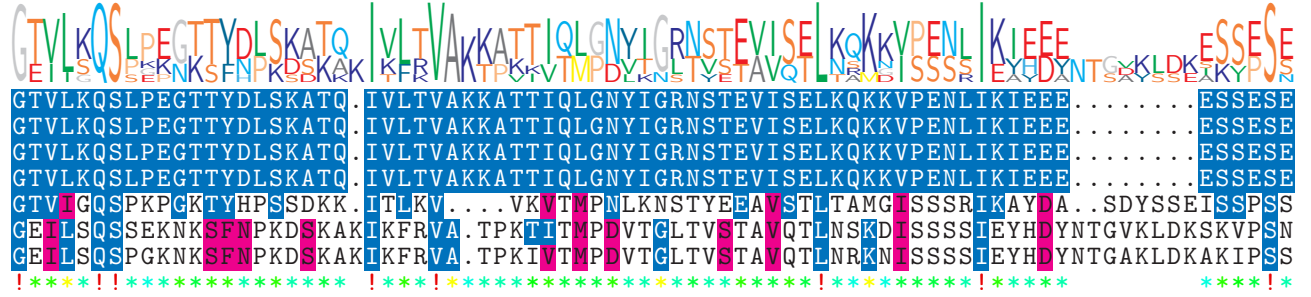
NTDB id 146 SP RS08570 WP 000614538.1  
 NTDB id 216 SPD RS08205 WP 000614552.1  
 NTDB id 182 SPR RS07820 WP 000614552.1  
 NTDB id 257 KZH43 RS07655 WP 220041236.1  
 NTDB id 384 SMU RS02325 WP 002263039.1  
 NTDB id 188274 BAY21 RS07665 WP 011226292.1  
 NTDB id 467 HSISS4 RS06915 WP 021143821.1  
 consensus



477  
477  
477  
477  
477  
475  
478

logo

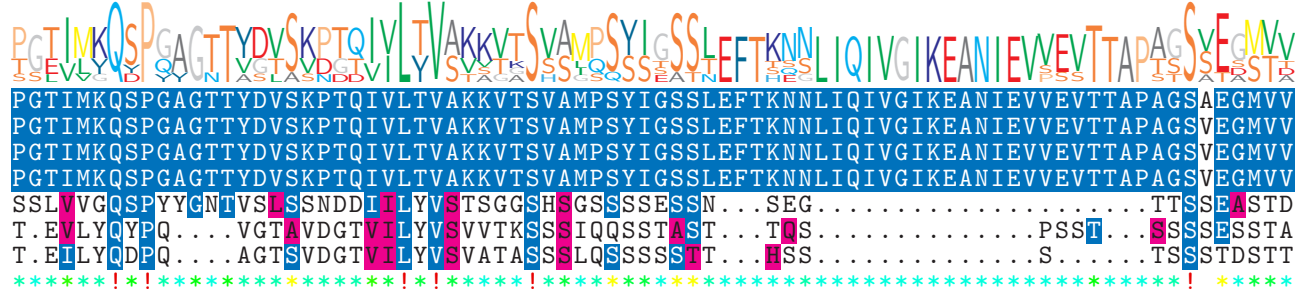
NTDB id 146 SP RS08570 WP 000614538.1  
 NTDB id 216 SPD RS08205 WP 000614552.1  
 NTDB id 182 SPR RS07820 WP 000614552.1  
 NTDB id 257 KZH43 RS07655 WP 220041236.1  
 NTDB id 384 SMU RS02325 WP 002263039.1  
 NTDB id 188274 BAY21 RS07665 WP 011226292.1  
 NTDB id 467 HSISS4 RS06915 WP 021143821.1  
 consensus



548  
548  
548  
548  
550  
554  
557

logo

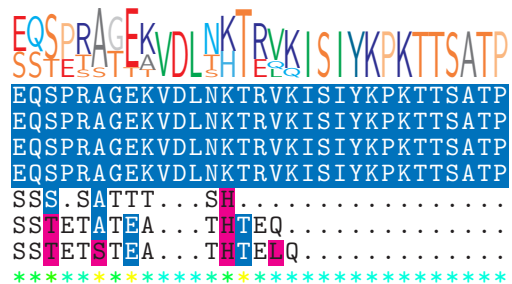
NTDB id 146 SP RS08570 WP 000614538.1  
 NTDB id 216 SPD RS08205 WP 000614552.1  
 NTDB id 182 SPR RS07820 WP 000614552.1  
 NTDB id 257 KZH43 RS07655 WP 220041236.1  
 NTDB id 384 SMU RS02325 WP 002263039.1  
 NTDB id 188274 BAY21 RS07665 WP 011226292.1  
 NTDB id 467 HSISS4 RS06915 WP 021143821.1  
 consensus



628  
628  
628  
628  
628  
606  
609  
609

logo

NTDB id 146 SP RS08570 WP 000614538.1  
NTDB id 216 SPD RS08205 WP 000614552.1  
NTDB id 182 SPR RS07820 WP 000614552.1  
NTDB id 257 KZH43 RS07655 WP 220041236.1  
NTDB id 384 SMU RS02325 WP 002263039.1  
NTDB id 188274 BAY21 RS07665 WP 011226292.1  
NTDB id 467 HSISS4 RS06915 WP 021143821.1  
consensus



non conserved  
 similar  
 ≥ 50% conserved