

logo

NTDB id 164435 AUC63 RS06040 WP 010372513.1  
NTDB id 480 HSISS4 RS02090 WP 002890133.1  
consensus



80  
77

logo

NTDB id 164435 AUC63 RS06040 WP 010372513.1  
NTDB id 480 HSISS4 RS02090 WP 002890133.1  
consensus



160  
157

logo

NTDB id 164435 AUC63 RS06040 WP 010372513.1  
NTDB id 480 HSISS4 RS02090 WP 002890133.1  
consensus



240  
237

logo

NTDB id 164435 AUC63 RS06040 WP 010372513.1  
NTDB id 480 HSISS4 RS02090 WP 002890133.1  
consensus



320  
316

logo

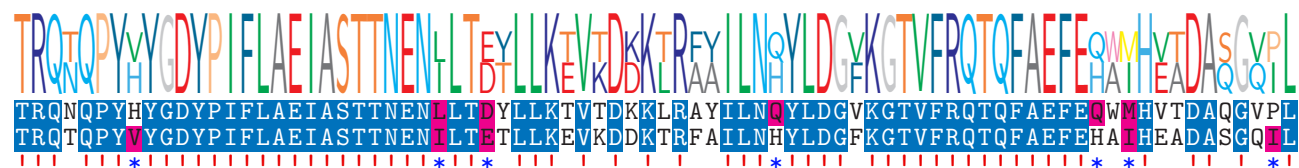
NTDB id 164435 AUC63 RS06040 WP 010372513.1  
NTDB id 480 HSISS4 RS02090 WP 002890133.1  
consensus



400  
396

logo

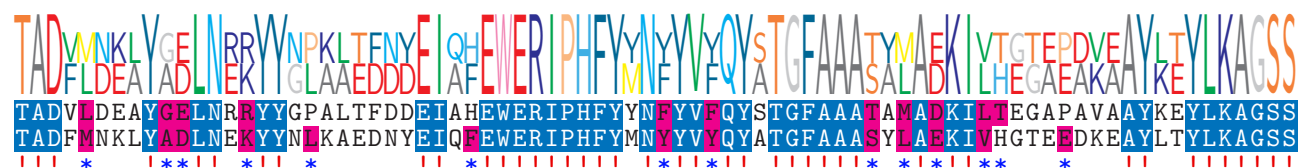
NTDB id 164435 AUC63 RS06040 WP 010372513.1  
NTDB id 480 HSISS4 RS02090 WP 002890133.1  
consensus



480  
476

logo

NTDB id 164435 AUC63 RS06040 WP 010372513.1  
NTDB id 480 HSISS4 RS02090 WP 002890133.1  
consensus



560  
556

logo

NTDB id 164435 AUC63 RS06040 WP 010372513.1

NTDB id 480 HSISS4 RS02090 WP 002890133.1

consensus



604

601

- non conserved
- similar
- ≥ 50% conserved