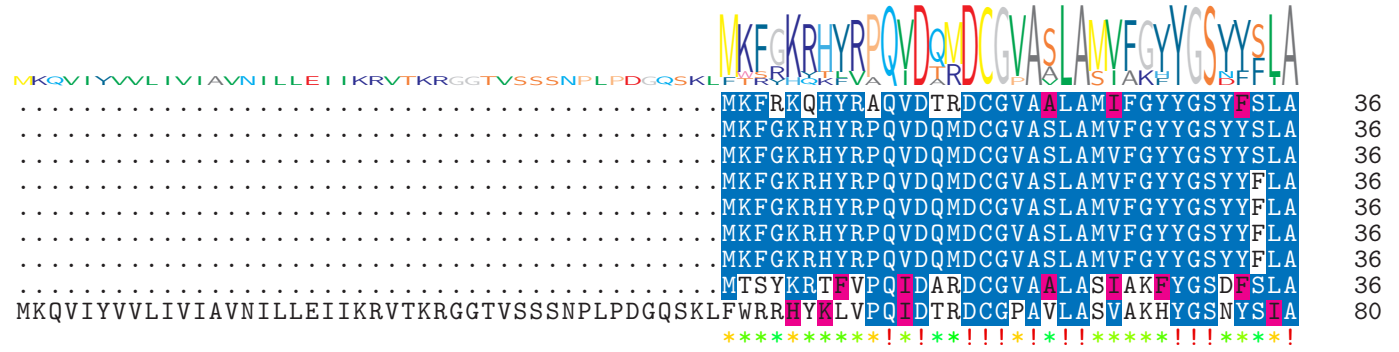


logo

NTDB id 421 SGO RS10260 WP 012131060.1  
 NTDB id 483 SM12261 RS00275 WP 000668315.1  
 NTDB id 511 SMSK321 RS10730 WP 000668322.1  
 NTDB id 247 KZH43 RS00220 WP 000668290.1  
 NTDB id 206 SPD RS00235 WP 000668290.1  
 NTDB id 171 SPR RS00230 WP 000668290.1  
 NTDB id 131 SP RS00255 WP 000668284.1  
 NTDB id 1170233 ACLV7Z RS10140 WP 218773990.1  
 NTDB id 358 SMU RS01425 WP 002263523.1



logo

NTDB id 421 SGO RS10260 WP 012131060.1  
 NTDB id 483 SM12261 RS00275 WP 000668315.1  
 NTDB id 511 SMSK321 RS10730 WP 000668322.1  
 NTDB id 247 KZH43 RS00220 WP 000668290.1  
 NTDB id 206 SPD RS00235 WP 000668290.1  
 NTDB id 171 SPR RS00230 WP 000668290.1  
 NTDB id 131 SP RS00255 WP 000668284.1  
 NTDB id 1170233 ACLV7Z RS10140 WP 218773990.1  
 NTDB id 358 SMU RS01425 WP 002263523.1



logo

NTDB id 421 SGO RS10260 WP 012131060.1  
 NTDB id 483 SM12261 RS00275 WP 000668315.1  
 NTDB id 511 SMSK321 RS10730 WP 000668322.1  
 NTDB id 247 KZH43 RS00220 WP 000668290.1  
 NTDB id 206 SPD RS00235 WP 000668290.1  
 NTDB id 171 SPR RS00230 WP 000668290.1  
 NTDB id 131 SP RS00255 WP 000668284.1  
 NTDB id 1170233 ACLV7Z RS10140 WP 218773990.1  
 NTDB id 358 SMU RS01425 WP 002263523.1



logo

NTDB id 421 SGO RS10260 WP 012131060.1  
 NTDB id 483 SM12261 RS00275 WP 000668315.1  
 NTDB id 511 SMSK321 RS10730 WP 000668322.1  
 NTDB id 247 KZH43 RS00220 WP 000668290.1  
 NTDB id 206 SPD RS00235 WP 000668290.1  
 NTDB id 171 SPR RS00230 WP 000668290.1  
 NTDB id 131 SP RS00255 WP 000668284.1  
 NTDB id 1170233 ACLV7Z RS10140 WP 218773990.1  
 NTDB id 358 SMU RS01425 WP 002263523.1



logo

NTDB id 421 SGO RS10260 WP 012131060.1  
 NTDB id 483 SM12261 RS00275 WP 000668315.1  
 NTDB id 511 SMSK321 RS10730 WP 000668322.1  
 NTDB id 247 KZH43 RS00220 WP 000668290.1  
 NTDB id 206 SPD RS00235 WP 000668290.1  
 NTDB id 171 SPR RS00230 WP 000668290.1  
 NTDB id 131 SP RS00255 WP 000668284.1  
 NTDB id 1170233 ACLV7Z RS10140 WP 218773990.1  
 NTDB id 358 SMU RS01425 WP 002263523.1

consensus

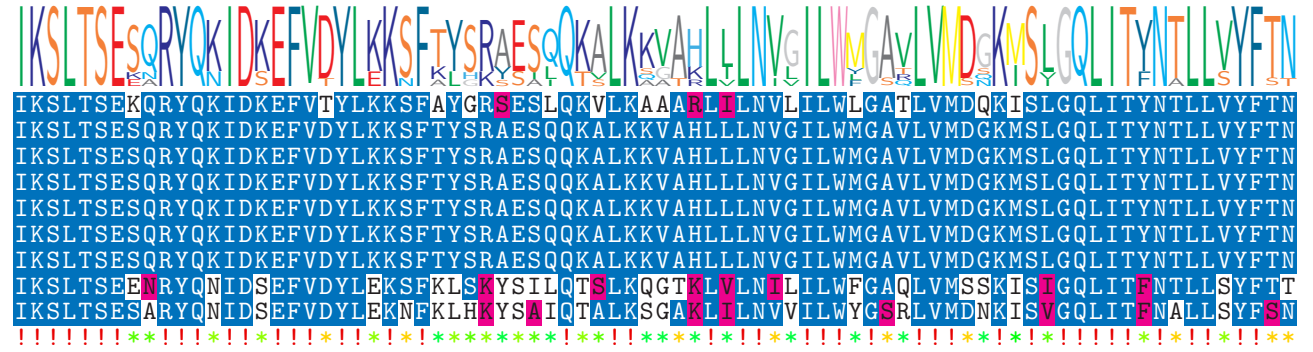


356  
356  
356  
356  
356  
356  
356  
356  
356  
400

logo

NTDB id 421 SGO RS10260 WP 012131060.1  
 NTDB id 483 SM12261 RS00275 WP 000668315.1  
 NTDB id 511 SMSK321 RS10730 WP 000668322.1  
 NTDB id 247 KZH43 RS00220 WP 000668290.1  
 NTDB id 206 SPD RS00235 WP 000668290.1  
 NTDB id 171 SPR RS00230 WP 000668290.1  
 NTDB id 131 SP RS00255 WP 000668284.1  
 NTDB id 1170233 ACLV7Z RS10140 WP 218773990.1  
 NTDB id 358 SMU RS01425 WP 002263523.1

consensus



436  
436  
436  
436  
436  
436  
436  
436  
436  
480

logo

NTDB id 421 SGO RS10260 WP 012131060.1  
 NTDB id 483 SM12261 RS00275 WP 000668315.1  
 NTDB id 511 SMSK321 RS10730 WP 000668322.1  
 NTDB id 247 KZH43 RS00220 WP 000668290.1  
 NTDB id 206 SPD RS00235 WP 000668290.1  
 NTDB id 171 SPR RS00230 WP 000668290.1  
 NTDB id 131 SP RS00255 WP 000668284.1  
 NTDB id 1170233 ACLV7Z RS10140 WP 218773990.1  
 NTDB id 358 SMU RS01425 WP 002263523.1

consensus



516  
516  
516  
516  
516  
516  
516  
516  
516  
560

logo

NTDB id 421 SGO RS10260 WP 012131060.1  
 NTDB id 483 SM12261 RS00275 WP 000668315.1  
 NTDB id 511 SMSK321 RS10730 WP 000668322.1  
 NTDB id 247 KZH43 RS00220 WP 000668290.1  
 NTDB id 206 SPD RS00235 WP 000668290.1  
 NTDB id 171 SPR RS00230 WP 000668290.1  
 NTDB id 131 SP RS00255 WP 000668284.1  
 NTDB id 1170233 ACLV7Z RS10140 WP 218773990.1  
 NTDB id 358 SMU RS01425 WP 002263523.1

consensus



596  
596  
596  
596  
596  
596  
596  
596  
596  
640

logo

NTDB id 421 SGO RS10260 WP 012131060.1  
 NTDB id 483 SM12261 RS00275 WP 000668315.1  
 NTDB id 511 SMSK321 RS10730 WP 000668322.1  
 NTDB id 247 KZH43 RS00220 WP 000668290.1  
 NTDB id 206 SPD RS00235 WP 000668290.1  
 NTDB id 171 SPR RS00230 WP 000668290.1  
 NTDB id 131 SP RS00255 WP 000668284.1  
 NTDB id 1170233 ACLV7Z RS10140 WP 218773990.1  
 NTDB id 358 SMU RS01425 WP 002263523.1  
 consensus



675  
 675  
 675  
 675  
 675  
 675  
 675  
 675  
 675  
 675

logo

NTDB id 421 SGO RS10260 WP 012131060.1  
 NTDB id 483 SM12261 RS00275 WP 000668315.1  
 NTDB id 511 SMSK321 RS10730 WP 000668322.1  
 NTDB id 247 KZH43 RS00220 WP 000668290.1  
 NTDB id 206 SPD RS00235 WP 000668290.1  
 NTDB id 171 SPR RS00230 WP 000668290.1  
 NTDB id 131 SP RS00255 WP 000668284.1  
 NTDB id 1170233 ACLV7Z RS10140 WP 218773990.1  
 NTDB id 358 SMU RS01425 WP 002263523.1  
 consensus



717  
 717  
 717  
 717  
 717  
 717  
 717  
 717  
 717  
 760

non conserved  
 similar  
 ≥ 50% conserved