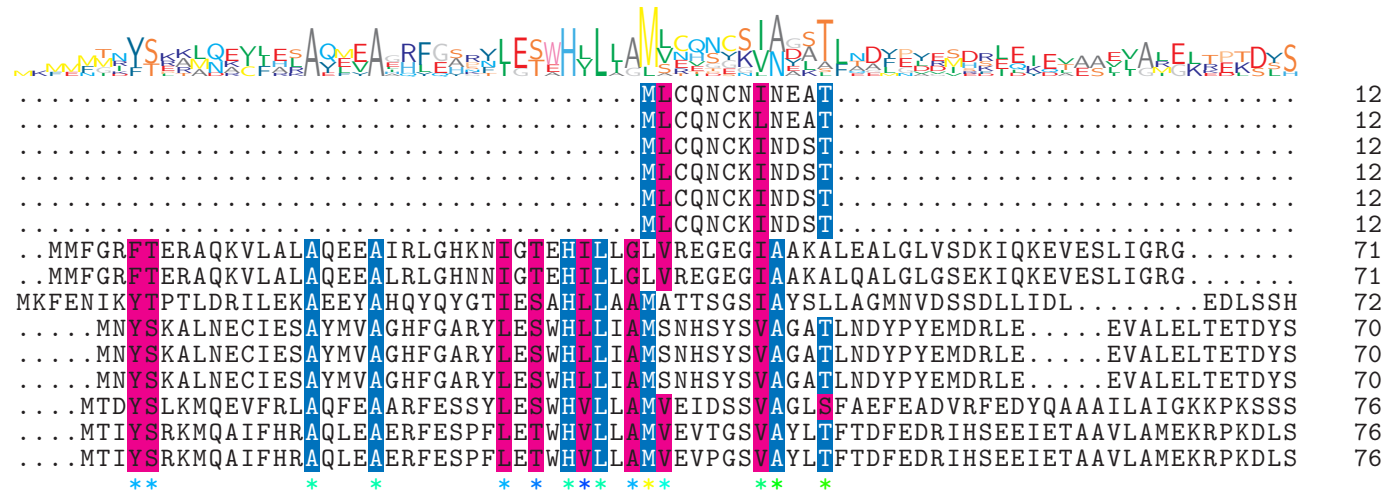


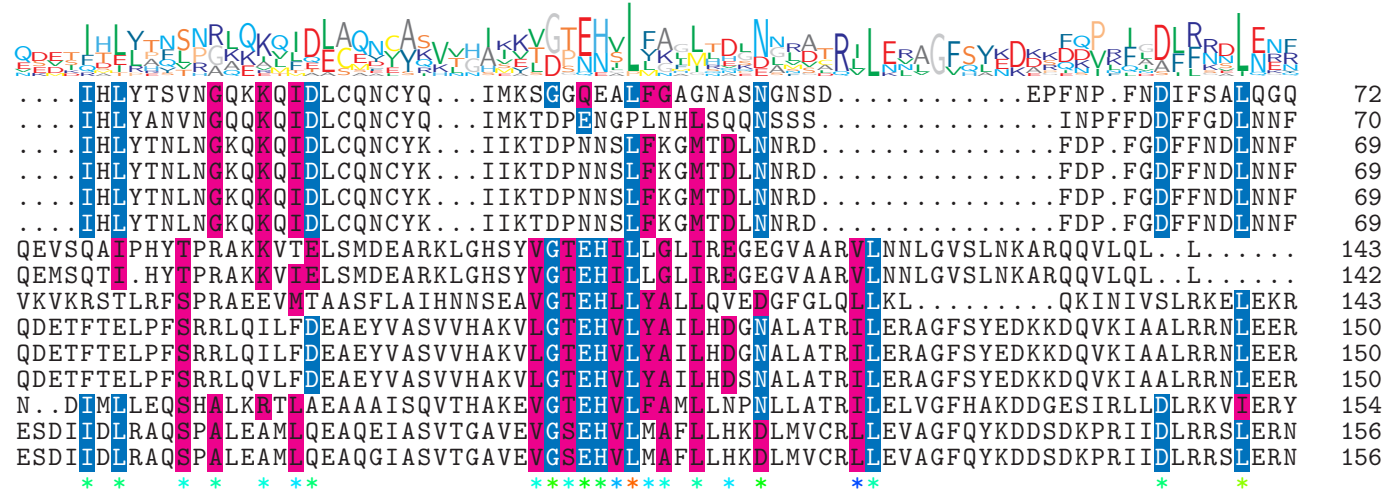
logo

NTDB id 601 KW2 RS02615 WP 021036805.1
 NTDB id 378 SMU RS02690 WP 002263569.1
 NTDB id 241 SP RS04015 WP 000882523.1
 NTDB id 281 KZH43 RS03550 WP 000882517.1
 NTDB id 245 SPD RS03860 WP 000882517.1
 NTDB id 243 SPR RS03635 WP 000882517.1
 NTDB id 1165884 AB3Y92 RS00585 WP 003216969.1
 NTDB id 85 BSU 00860 NP 387967.1
 NTDB id 610 V4T04 RS10165 WP 012897346.1
 NTDB id 290 KZH43 RS10025 WP 001109677.1
 NTDB id 289 SPD RS10700 WP 001109677.1
 NTDB id 287 SP RS11210 WP 001109712.1
 NTDB id 377 SMU RS09275 WP 002262344.1
 NTDB id 297 STER RS00545 WP 011680614.1
 NTDB id 329 STU RS10020 WP 011225298.1
 consensus



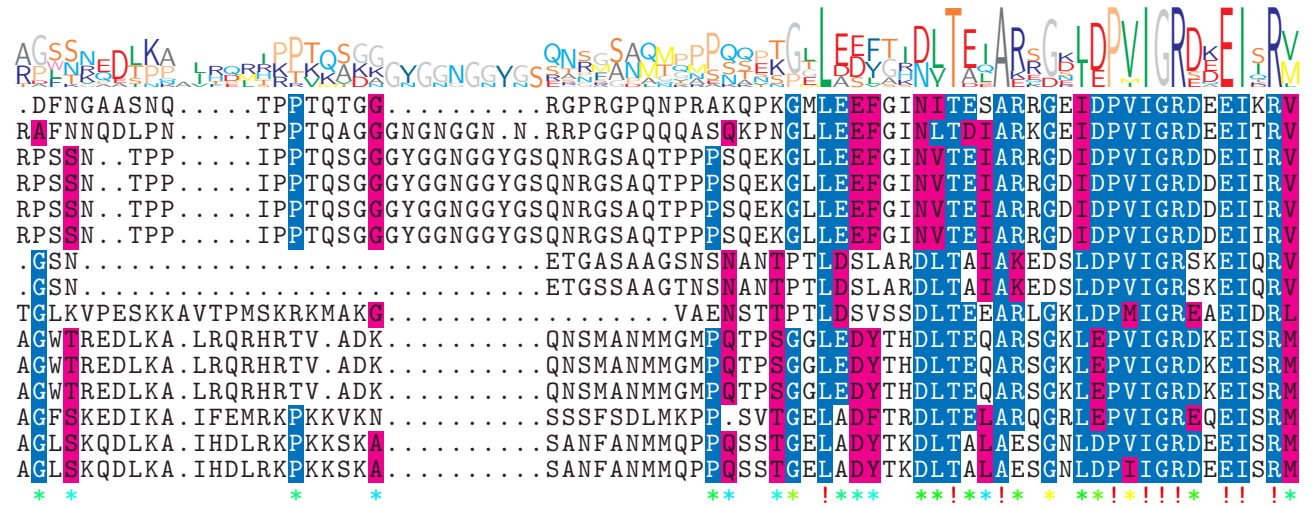
logo

NTDB id 601 KW2 RS02615 WP 021036805.1
 NTDB id 378 SMU RS02690 WP 002263569.1
 NTDB id 241 SP RS04015 WP 000882523.1
 NTDB id 281 KZH43 RS03550 WP 000882517.1
 NTDB id 245 SPD RS03860 WP 000882517.1
 NTDB id 243 SPR RS03635 WP 000882517.1
 NTDB id 1165884 AB3Y92 RS00585 WP 003216969.1
 NTDB id 85 BSU 00860 NP 387967.1
 NTDB id 610 V4T04 RS10165 WP 012897346.1
 NTDB id 290 KZH43 RS10025 WP 001109677.1
 NTDB id 289 SPD RS10700 WP 001109677.1
 NTDB id 287 SP RS11210 WP 001109712.1
 NTDB id 377 SMU RS09275 WP 002262344.1
 NTDB id 297 STER RS00545 WP 011680614.1
 NTDB id 329 STU RS10020 WP 011225298.1
 consensus



logo

NTDB id 601 KW2 RS02615 WP 021036805.1
 NTDB id 378 SMU RS02690 WP 002263569.1
 NTDB id 241 SP RS04015 WP 000882523.1
 NTDB id 281 KZH43 RS03550 WP 000882517.1
 NTDB id 245 SPD RS03860 WP 000882517.1
 NTDB id 243 SPR RS03635 WP 000882517.1
 NTDB id 1165884 AB3Y92 RS00585 WP 003216969.1
 NTDB id 85 BSU 00860 NP 387967.1
 NTDB id 610 V4T04 RS10165 WP 012897346.1
 NTDB id 290 KZH43 RS10025 WP 001109677.1
 NTDB id 289 SPD RS10700 WP 001109677.1
 NTDB id 287 SP RS11210 WP 001109712.1
 NTDB id 377 SMU RS09275 WP 002262344.1
 NTDB id 297 STER RS00545 WP 011680614.1
 NTDB id 329 STU RS10020 WP 011225298.1
 consensus



136
143
142
142
142
142
193
192
205
218
218
218
222
225
225

logo

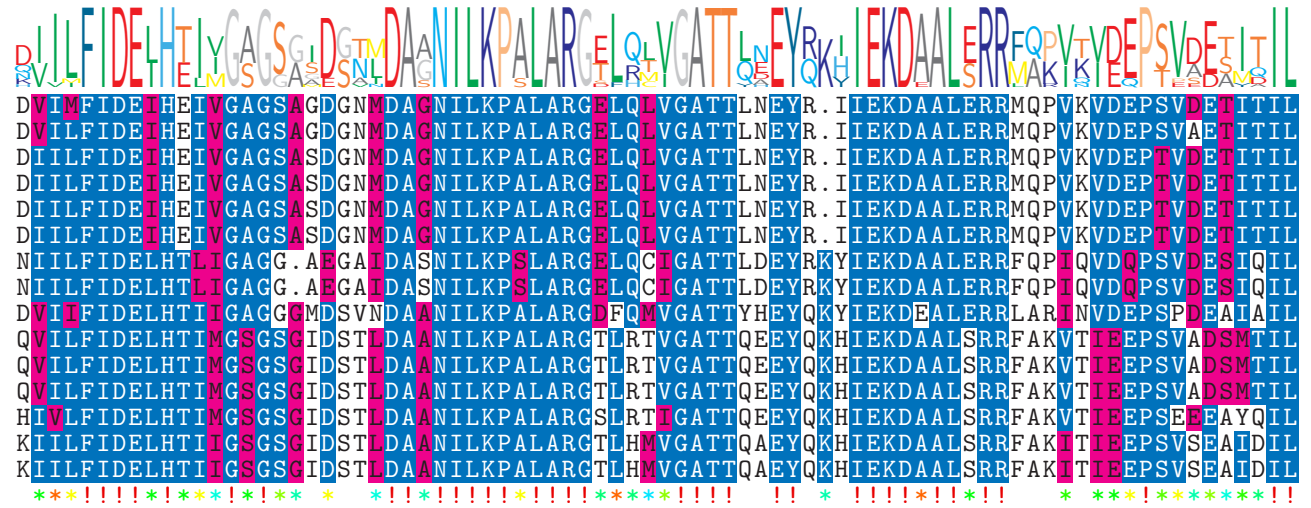
NTDB id 601 KW2 RS02615 WP 021036805.1
 NTDB id 378 SMU RS02690 WP 002263569.1
 NTDB id 241 SP RS04015 WP 000882523.1
 NTDB id 281 KZH43 RS03550 WP 000882517.1
 NTDB id 245 SPD RS03860 WP 000882517.1
 NTDB id 243 SPR RS03635 WP 000882517.1
 NTDB id 1165884 AB3Y92 RS00585 WP 003216969.1
 NTDB id 85 BSU 00860 NP 387967.1
 NTDB id 610 V4T04 RS10165 WP 012897346.1
 NTDB id 290 KZH43 RS10025 WP 001109677.1
 NTDB id 289 SPD RS10700 WP 001109677.1
 NTDB id 287 SP RS11210 WP 001109712.1
 NTDB id 377 SMU RS09275 WP 002262344.1
 NTDB id 297 STER RS00545 WP 011680614.1
 NTDB id 329 STU RS10020 WP 011225298.1
 consensus



216
223
222
222
222
222
273
272
285
298
298
298
302
305
305

logo

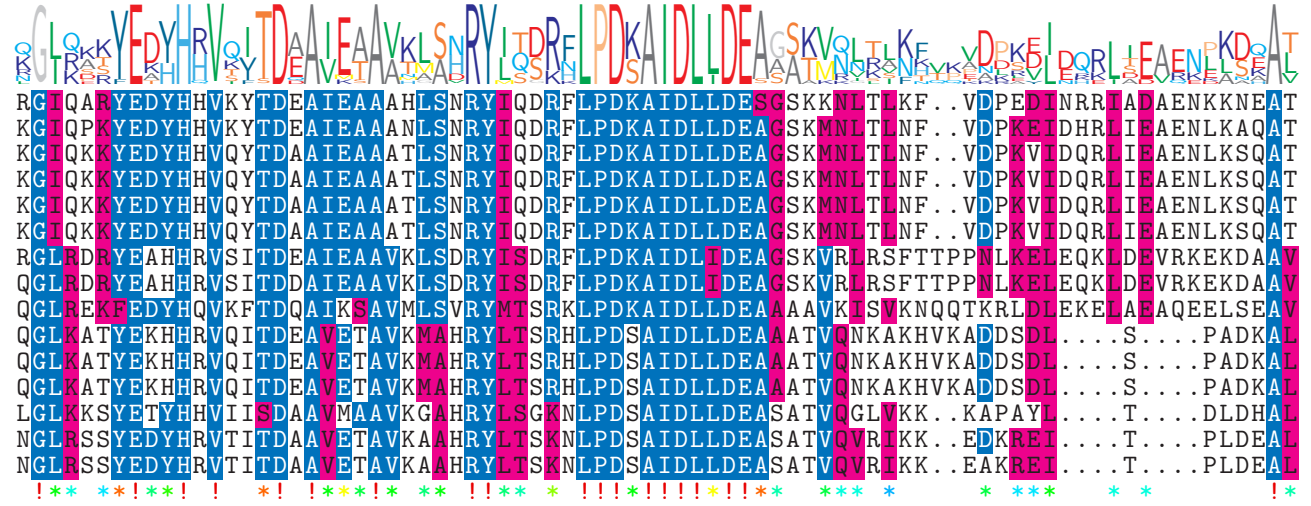
NTDB id 601 KW2 RS02615 WP 021036805.1
 NTDB id 378 SMU RS02690 WP 002263569.1
 NTDB id 241 SP RS04015 WP 000882523.1
 NTDB id 281 KZH43 RS03550 WP 000882517.1
 NTDB id 245 SPD RS03860 WP 000882517.1
 NTDB id 243 SPR RS03635 WP 000882517.1
 NTDB id 1165884 AB3Y92 RS00585 WP 003216969.1
 NTDB id 85 BSU 00860 NP 387967.1
 NTDB id 610 V4T04 RS10165 WP 012897346.1
 NTDB id 290 KZH43 RS10025 WP 001109677.1
 NTDB id 289 SPD RS10700 WP 001109677.1
 NTDB id 287 SP RS11210 WP 001109712.1
 NTDB id 377 SMU RS09275 WP 002262344.1
 NTDB id 297 STER RS00545 WP 011680614.1
 NTDB id 329 STU RS10020 WP 011225298.1
 consensus



295
 302
 301
 301
 301
 301
 352
 351
 365
 378
 378
 378
 382
 385
 385

logo

NTDB id 601 KW2 RS02615 WP 021036805.1
 NTDB id 378 SMU RS02690 WP 002263569.1
 NTDB id 241 SP RS04015 WP 000882523.1
 NTDB id 281 KZH43 RS03550 WP 000882517.1
 NTDB id 245 SPD RS03860 WP 000882517.1
 NTDB id 243 SPR RS03635 WP 000882517.1
 NTDB id 1165884 AB3Y92 RS00585 WP 003216969.1
 NTDB id 85 BSU 00860 NP 387967.1
 NTDB id 610 V4T04 RS10165 WP 012897346.1
 NTDB id 290 KZH43 RS10025 WP 001109677.1
 NTDB id 289 SPD RS10700 WP 001109677.1
 NTDB id 287 SP RS11210 WP 001109712.1
 NTDB id 377 SMU RS09275 WP 002262344.1
 NTDB id 297 STER RS00545 WP 011680614.1
 NTDB id 329 STU RS10020 WP 011225298.1
 consensus



373
 380
 379
 379
 379
 379
 432
 431
 445
 450
 450
 450
 452
 455
 455

logo



NTDB id 601 KW2 RS02615 WP 021036805.1	VDLGYNPAMGARPLRRTIQENTIEDSTADFYIEHPEYKQ.LVADLIDDKIVISNQTQETAETTDEEVPAE	748
NTDB id 378 SMU RS02690 WP 002263569.1	VDLGYDPKMGARPLRRTIQEHIEDAITDFYLEHPEQKE.LKAIMTSNGKIVIKASNK.VETVTKATSD.	753
NTDB id 241 SP RS04015 WP 000882523.1	VDLGYDPKMGARPLRRTIQDYIEDTITDYYLENPSEKD.LKAVMTSKGNIQIKSAKK.AEVKSSEKEK.	752
NTDB id 281 KZH43 RS03550 WP 000882517.1	VDLGYDPKMGARPLRRTIQDYIEDTITDYYLENPSEKD.LKAVMTSKGNIQIKSAKK.AEVKSSEKEK.	752
NTDB id 245 SPD RS03860 WP 000882517.1	VDLGYDPKMGARPLRRTIQDYIEDTITDYYLENPSEKD.LKAVMTSKGNIQIKSAKK.AEVKSSEKEK.	752
NTDB id 243 SPR RS03635 WP 000882517.1	VDLGYDPKMGARPLRRTIQDYIEDTITDYYLENPSEKD.LKAVMTSKGNIQIKSAKK.AEVKSSEKEK.	752
NTDB id 1165884 AB3Y92 RS00585 WP 003216969.1	ADEGVLDLEYGARPLRRAIQKHVEDRLSEELLKGNIEKGGQIVLDVEDGEIVVKTTAATN.....	811
NTDB id 85 BSU 00860 NP 387967.1	AEEGVLDLEYGARPLRRAIQKHVEDRLSEELLRGNIHKGQHIVLDVEDGEFVVKTTAKTN.....	810
NTDB id 610 V4T04 RS10165 WP 012897346.1	AEEVGFDPYEGARPLRKAALQKEVEDLSEQLLSGETKAGNHVSI GASNKKTKIAQIV.....	816
NTDB id 290 KZH43 RS10025 WP 001109677.1	ANQGYDPEMGARPLRRTLQTEVEDKLAELLLKGDLVAGSILKIGVKAGQLKFDIA.....	810
NTDB id 289 SPD RS10700 WP 001109677.1	ANQGYDPEMGARPLRRTLQTEVEDKLAELLLKGDLVAGSILKIGVKAGQLKFDIA.....	810
NTDB id 287 SP RS11210 WP 001109712.1	ANQGYDPEMGARPLRRTLQTEVEDKLAELLLKGDLVAGSTLKIIGVKAGQLKFDIA.....	810
NTDB id 377 SMU RS09275 WP 002262344.1	ALAGYDAEMGARPLRRTLQTEVEDKLAELILSGKLASGQTLKIIGIQKEKIKFDIV.....	813
NTDB id 297 STER RS00545 WP 011680614.1	AKDGYDIEMGARPLRRTIQTQVEDKLSLELLGGQVVSGQTLKIIGCSKDKLTFTVV.....	816
NTDB id 329 STU RS10020 WP 011225298.1	AKDGYDIEMGARPLRRTIQTQVEDKLSLELLGGQVVSGQTLKIIGCSKDKLTFTVV.....	816
consensus	** !*****!!!!!!***! *!! *** ** * * * * * * * * * * * *	

non conserved
 similar
 ≥ 50% conserved