

logo

NTDB id 1155359 QNH74 RS05740 WP 002935290.1
 NTDB id 363 SMU RS05195 WP 002262215.1
 NTDB id 259 KZH43 RS03480 WP 000491790.1
 NTDB id 218 SPD RS03780 WP 000491790.1
 NTDB id 184 SPR RS03565 WP 000491790.1
 NTDB id 148 SP RS03910 WP 000491790.1
 consensus



80
76
77
77
77
77

logo

NTDB id 1155359 QNH74 RS05740 WP 002935290.1
 NTDB id 363 SMU RS05195 WP 002262215.1
 NTDB id 259 KZH43 RS03480 WP 000491790.1
 NTDB id 218 SPD RS03780 WP 000491790.1
 NTDB id 184 SPR RS03565 WP 000491790.1
 NTDB id 148 SP RS03910 WP 000491790.1
 consensus



159
138
140
140
140
140

logo

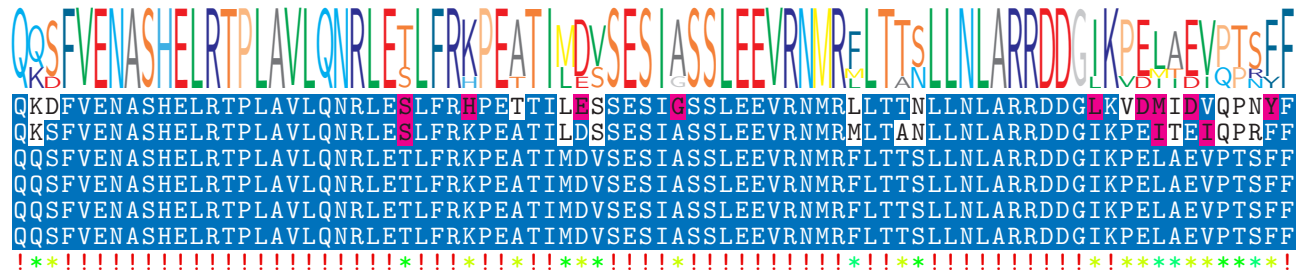
NTDB id 1155359 QNH74 RS05740 WP 002935290.1
 NTDB id 363 SMU RS05195 WP 002262215.1
 NTDB id 259 KZH43 RS03480 WP 000491790.1
 NTDB id 218 SPD RS03780 WP 000491790.1
 NTDB id 184 SPR RS03565 WP 000491790.1
 NTDB id 148 SP RS03910 WP 000491790.1
 consensus



239
213
216
216
216
216

logo

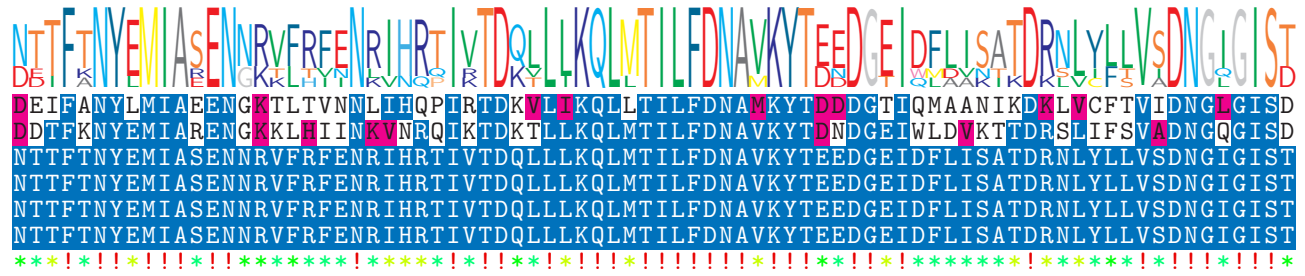
NTDB id 1155359 QNH74 RS05740 WP 002935290.1
 NTDB id 363 SMU RS05195 WP 002262215.1
 NTDB id 259 KZH43 RS03480 WP 000491790.1
 NTDB id 218 SPD RS03780 WP 000491790.1
 NTDB id 184 SPR RS03565 WP 000491790.1
 NTDB id 148 SP RS03910 WP 000491790.1
 consensus



319
293
296
296
296
296

logo

NTDB id 1155359 QNH74 RS05740 WP 002935290.1
 NTDB id 363 SMU RS05195 WP 002262215.1
 NTDB id 259 KZH43 RS03480 WP 000491790.1
 NTDB id 218 SPD RS03780 WP 000491790.1
 NTDB id 184 SPR RS03565 WP 000491790.1
 NTDB id 148 SP RS03910 WP 000491790.1
 consensus



399
373
376
376
376
376

logo

NTDB id 1155359 QNH74 RS05740 WP 002935290.1
 NTDB id 363 SMU RS05195 WP 002262215.1
 NTDB id 259 KZH43 RS03480 WP 000491790.1
 NTDB id 218 SPD RS03780 WP 000491790.1
 NTDB id 184 SPR RS03565 WP 000491790.1
 NTDB id 148 SP RS03910 WP 000491790.1
 consensus



non conserved
 similar
 ≥ 50% conserved

459
 435
 444
 444
 444